



IJRASET

International Journal For Research in
Applied Science and Engineering Technology



INTERNATIONAL JOURNAL FOR RESEARCH

IN APPLIED SCIENCE & ENGINEERING TECHNOLOGY

Volume: 14 **Issue:** IV **Month of publication:** April 2026

DOI: <https://doi.org/10.22214/ijraset.2026.80928>

www.ijraset.com

Call:  08813907089

E-mail ID: ijraset@gmail.com

AI-Driven Multi-Disease Detection System Using Deep Learning for Brain Tumor and Pneumonia

K TEJASWI¹, B GOWTHAMI², G SNEHA³, N JAGADESWARI⁴

Department of Computer Applications, Aditya University Surampalem, Andhra Pradesh, India 533 437

Abstract: This paper presents an intelligent and automated system for detecting brain tumors and pneumonia using advanced deep learning and image processing techniques. The proposed system is designed to analyze medical images such as brain MRI scans and chest X-ray images to identify the presence of diseases accurately. Convolutional Neural Networks (CNNs) are employed with transfer learning to improve classification performance while reducing training time. Various image preprocessing techniques, including resizing, normalization, noise reduction, and contrast enhancement, are applied to improve the quality of input images. Additionally, data augmentation methods are used to increase dataset diversity and enhance model generalization. The trained models are integrated into a Flask-based web application, allowing users to upload images and receive real-time predictions. The system produces results in a clear and understandable format, indicating whether the image is normal or affected. By automating the detection process, the system reduces diagnosis time, minimizes human error, and supports early medical intervention, making it highly beneficial in modern healthcare environments.

Keywords: Deep Learning, Convolutional Neural Networks, Brain Tumor Detection, Pneumonia Detection, Medical Image Processing, Flask Web Application

I. INTRODUCTION

The integration of artificial intelligence into healthcare has opened new possibilities for improving diagnostic accuracy and efficiency. Among various applications, medical image analysis has emerged as a critical area where AI can significantly assist healthcare professionals. Diseases such as brain tumors and pneumonia require timely detection to ensure effective treatment and improved patient outcomes. Brain tumors, which involve abnormal cell growth within the brain, can be life-threatening if not identified at an early stage. Similarly, pneumonia, a severe lung infection, can rapidly worsen if diagnosis is delayed.

Traditional diagnostic procedures rely heavily on radiologists who manually examine MRI scans and chest X-ray images. Although these methods are effective, they are time-consuming and subject to human limitations such as fatigue and variability in interpretation. Moreover, the increasing volume of medical imaging data has placed additional pressure on healthcare systems, making it difficult to maintain consistent diagnostic quality. In rural and underdeveloped regions, the shortage of skilled radiologists further exacerbates the problem, leading to delayed or inaccurate diagnoses.

To address these challenges, the proposed system utilizes deep learning techniques to automate the detection of brain tumors and pneumonia. Convolutional Neural Networks are particularly well-suited for image classification tasks due to their ability to automatically extract relevant features from raw image data. By combining CNN models with advanced image preprocessing techniques and deploying them through a web-based platform, the system provides a practical and scalable solution for real-world healthcare applications.

II. PROBLEM STATEMENT

The process of diagnosing diseases from medical images presents several challenges that impact both efficiency and accuracy in healthcare systems. One of the primary issues is the heavy reliance on manual interpretation by radiologists, which is inherently time-consuming and prone to human error. As the number of patients increases, the workload on medical professionals becomes overwhelming, leading to delays in diagnosis and treatment. This is particularly critical in cases of brain tumors and pneumonia, where early detection plays a crucial role in patient survival.

Another significant problem is the lack of accessibility to advanced diagnostic tools in rural and under-resourced areas. Many healthcare facilities do not have access to experienced radiologists, making it difficult to provide accurate diagnoses. Additionally, most existing automated systems are designed to detect only a single disease, limiting their effectiveness in real-world scenarios where multiple conditions may need to be evaluated simultaneously. The absence of integrated platforms further complicates the diagnostic process, as different tools must be used for different diseases.

Furthermore, many research-based systems are not implemented as real-time applications, reducing their practical usability. The lack of user-friendly interfaces also prevents non-technical users from interacting with these systems effectively. These challenges highlight the need for an intelligent, integrated, and real-time diagnostic system that can accurately analyze medical images and provide reliable results.

III. GAP ANALYSIS

An extensive review of existing literature and systems reveals several gaps that limit the effectiveness of current medical image analysis solutions. A major limitation is that most systems are designed to detect only a single type of disease. For instance, some models focus exclusively on brain tumor detection using MRI images, while others are limited to pneumonia detection using chest X-rays. This lack of integration reduces the practicality of these systems in real-world healthcare environments where multiple diseases must be analyzed concurrently.

Another important gap is the absence of real-time deployment. Many research studies concentrate on achieving high accuracy in controlled environments but do not extend their work to develop fully functional applications. As a result, these models remain confined to experimental settings and are not accessible to healthcare professionals or patients. Additionally, there is a lack of user-friendly interfaces that allow easy interaction with the system. Most existing solutions require technical expertise, which limits their usability.

The issue of model transparency is also a concern, as many deep learning systems function as black boxes, providing predictions without clear explanations. This reduces trust among medical professionals. Moreover, integration challenges persist, as different models are often developed independently without being combined into a single cohesive system. These gaps emphasize the need for a comprehensive solution that integrates multiple disease detection capabilities, real-time processing, and user-friendly design.

IV. LITERATURE SURVEY

The application of deep learning in medical imaging has been widely explored in recent years, with numerous studies demonstrating its effectiveness in disease detection. Early research focused on the use of Convolutional Neural Networks for classifying medical images, achieving significant improvements over traditional image processing methods. Pretrained architectures such as ResNet, DenseNet, and VGG have been extensively used for transfer learning, allowing models to leverage knowledge from large datasets and improve performance on medical imaging tasks. Studies on brain tumor detection have shown that CNN models can effectively identify abnormal patterns in MRI images, enabling accurate classification of tumor and non-tumor cases. Similarly, research on pneumonia detection has demonstrated the ability of deep learning models to analyze chest X-ray images and detect infection-related features such as lung opacities. Some studies have also explored the use of hybrid models and ensemble techniques to further enhance performance.

Despite these advancements, most research works are limited in scope and do not address the need for integrated systems. Additionally, many studies lack real-time implementation and focus primarily on model accuracy. Recent trends in the field emphasize the importance of explainable AI, which aims to provide visual interpretations of model predictions. However, this area is still underdeveloped, and more research is needed to improve transparency and trust in AI-based diagnostic systems.

TABLE I
LITERATURE SURVEY SUMMARY

S.No.	Paper Title	Author & Year	Method	Gap	Finding
1	Brain Tumor Detection	Rajinikanth (2020)	CNN	Single disease	High accuracy
2	MRI Classification	Badza (2020)	CNN	No real-time system	Good classification
3	Pneumonia Detection	Rahman (2020)	Transfer Learning	Binary only	Efficient
4	COVID-Net	Wang (2020)	Deep CNN	Limited scope	Fast detection
5	CNN Overview	Albawi (2021)	CNN Theory	No implementation	Strong foundation
6	Deep Learning	Alom (2020)	CNN	Not integration	High performance

	Survey				
7	Brain Tumor CNN	Abdusalomov (2023)	CNN	No multi - disease	Accurate
8	Pneumonia Detection	SCITEPRESS (2025)	CNN	No tumor detection	Efficient

V. EXISTING SYSTEMS

Existing systems for medical image analysis primarily rely on deep learning models such as ResNet50 and DenseNet121 for disease detection. These models are typically trained on large datasets of MRI and chest X-ray images, where they learn to classify images into normal and diseased categories. Image preprocessing techniques such as normalization and rescaling are commonly used to standardize input data, while data augmentation methods are applied to improve model performance.

Although these systems achieve high accuracy, they often operate as standalone models without integration into real-world applications. Most existing solutions lack a unified platform that can handle multiple diseases, and they are not designed for real-time interaction. As a result, their practical use in clinical environments remains limited.

VI. PROPOSED SYSTEM

The proposed system introduces an integrated approach to medical image analysis by combining deep learning models with image processing techniques and a web-based interface. The system is designed to detect both brain tumors and pneumonia within a single platform, thereby addressing the limitations of existing solutions. Separate CNN models are developed for each disease, ensuring specialized feature learning and improved accuracy.

The system architecture follows a layered design, consisting of input, preprocessing, model, and output layers. Medical images are first processed to enhance quality and remove noise before being fed into the appropriate model. The models analyze the images and generate predictions, which are then displayed through a Flask-based web application. This integration enables real-time predictions and ensures ease of use.

The use of transfer learning further enhances model performance by leveraging pretrained networks, reducing training time and improving accuracy. The system is designed to be scalable and can be extended to include additional diseases in the future, making it a versatile solution for healthcare applications.

AI-Based Brain Tumor and Pneumonia Detection System - Architecture Diagram

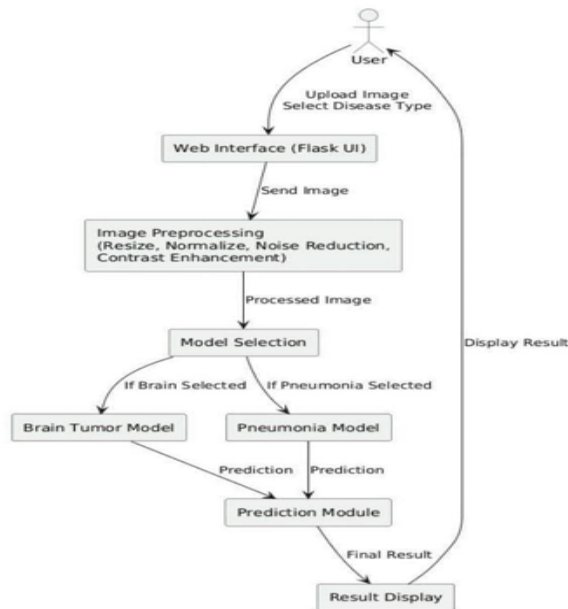


Fig 4.2 Architecture Diagram

VII. IMPLEMENTATION

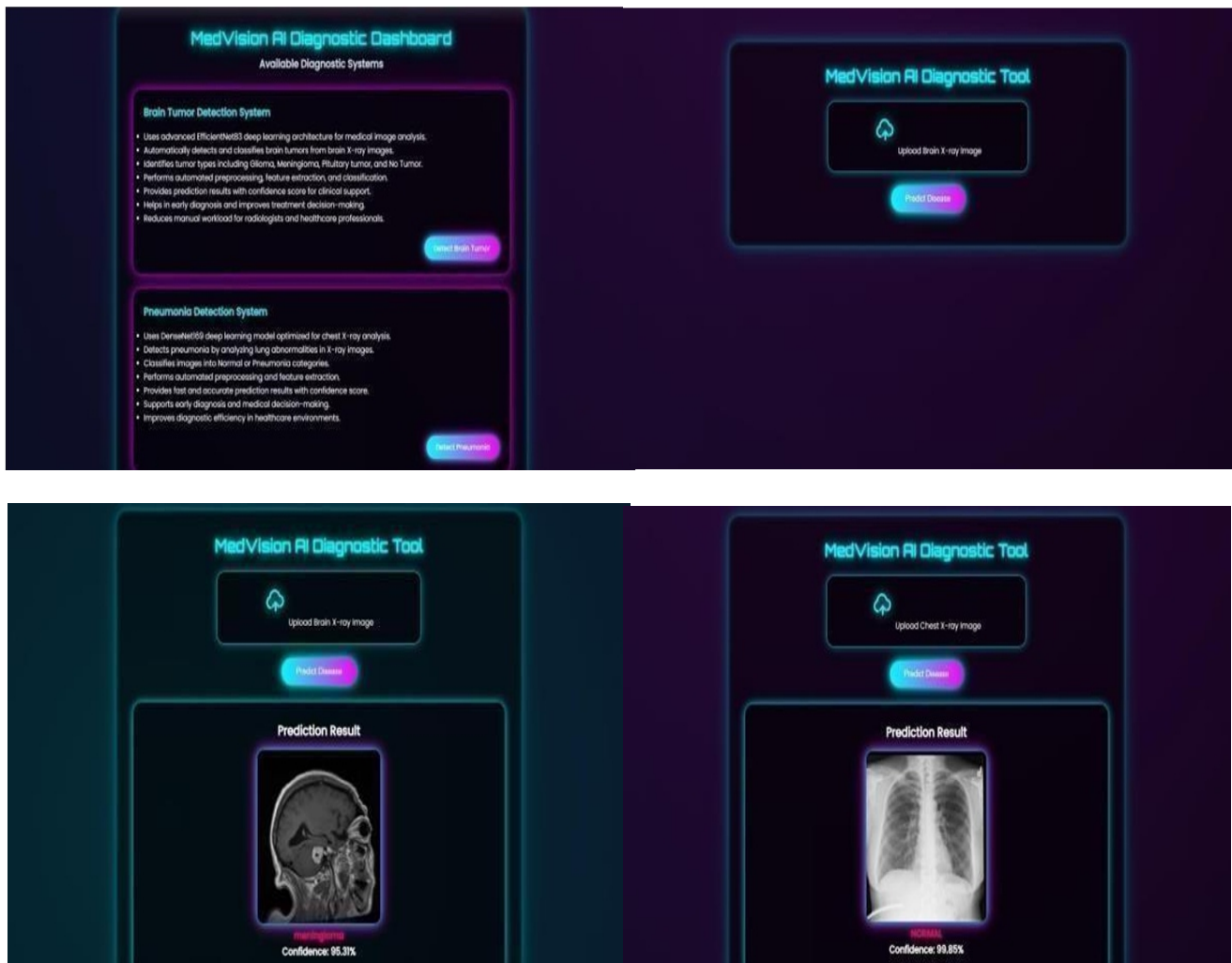
The implementation of the proposed system involves multiple stages, each contributing to the overall functionality of the system. Initially, medical image datasets are collected and organized into labeled categories for training and evaluation. Preprocessing techniques are applied to standardize the images and improve their quality. These techniques include resizing images to a fixed dimension, normalizing pixel values, reducing noise, and enhancing contrast.

The deep learning models are developed using TensorFlow and Keras, with pretrained architectures used for transfer learning. Data augmentation techniques such as rotation, flipping, and scaling are applied to increase dataset diversity and improve model robustness. The models are trained and evaluated using appropriate metrics, including accuracy, precision, recall, and F1-score.

Once the models are trained, they are integrated into a Flask-based web application, which serves as the user interface. The application allows users to upload images, select the type of disease detection, and receive predictions in real time. The system is designed to provide fast and reliable results, ensuring a smooth user experience.

VIII. RESULT

The experimental results demonstrate the effectiveness of the proposed system in detecting brain tumors and pneumonia from medical images. The models achieve high accuracy and exhibit strong generalization capabilities when tested on unseen data. The use of preprocessing and data augmentation techniques significantly improves model performance, while transfer learning enhances feature extraction.



The system also performs efficiently in real-time scenarios, providing quick predictions with minimal delay. The response time includes all stages of processing, from image upload to result display, ensuring a seamless user experience. Comparative analysis indicates that the proposed system outperforms traditional methods in terms of both accuracy and efficiency.

Overall, the results validate the effectiveness of the system as a reliable tool for automated disease detection in healthcare applications.

IX. FUTURE SCOPE

The proposed system can be further improved by incorporating additional features and functionalities. One potential enhancement is the implementation of multi-class classification, allowing the system to identify different types and stages of diseases. The inclusion of additional diseases such as lung cancer and tuberculosis can expand the scope of the system, making it more comprehensive.

The integration of explainable AI techniques can improve transparency by providing visual explanations of model predictions. Deploying the system on cloud platforms can enhance accessibility and scalability, enabling users to access the system from anywhere. Additionally, the development of a mobile application can increase convenience and usability, particularly for healthcare professionals working in remote areas.

X. CONCLUSION

The proposed AI-based system for brain tumor and pneumonia detection represents a significant advancement in medical image analysis. By combining deep learning techniques with image processing and web-based deployment, the system provides an efficient and reliable solution for disease detection. The high accuracy and real-time capabilities of the system make it suitable for practical healthcare applications.

The system reduces dependency on manual diagnosis and minimizes the risk of human error, thereby improving diagnostic efficiency. Its user-friendly interface ensures accessibility for both technical and non-technical users. Overall, the project demonstrates the potential of artificial intelligence in transforming healthcare and provides a foundation for future research and development in this field.

REFERENCES

- [1] S. Rajinikanth, S. Kadry, V. Damaševičius, and R. T. Al-Turjman, "Brain tumor detection using deep learning models: A review," *IEEE Access*, vol. 8, pp. 213882–213902, 2020.
- [2] A. M. Badža and M. Č. Barjaktarović, "Classification of brain tumors from MRI images using a convolutional neural network," *Applied Sciences*, vol. 10, no. 6, pp. 1999, 2020.
- [3] T. Rahman, M. E. H. Chowdhury, A. Khandakar, and S. M. S. Islam, "Transfer learning with deep convolutional neural network (CNN) for pneumonia detection using chest X-ray," *Applied Sciences*, vol. 10, no. 9, pp. 3233, 2020.
- [4] L. Wang and A. Wong, "COVID-Net: A tailored deep convolutional neural network design for detection of COVID-19 cases from chest X-ray images," *Scientific Reports*, vol. 10, pp. 19549, 2020.
- [5] M. H. Alom, M. Yakopcic, T. M. Taha, and V. K. Asari, "The history began from AlexNet: A comprehensive survey on deep learning approaches," *arXiv preprint arXiv:1803.01164*, 2020.
- [6] S. S. Yadav and A. Jadhav, "Deep convolutional neural network based medical image classification for disease diagnosis," *Journal of Big Data*, vol. 7, no. 1, pp. 1–18, 2020.
- [7] M. Z. Alom, M. Hasan, C. Yakopcic, T. M. Taha, and V. K. Asari, "Recurrent residual convolutional neural network based on U-Net (R2U-Net) for medical image segmentation," *Neural Networks*, vol. 129, pp. 104–115, 2020.
- [8] H. Panwar, P. K. Gupta, M. K. Siddiqui, R. Morales-Menendez, and V. Singh, "Application of deep learning for fast detection of COVID-19 in X-rays using nCOVnet," *Chaos, Solitons & Fractals*, vol. 138, pp. 109944, 2020.
- [9] S. Albawi, T. A. Mohammed, and S. Al-Zawi, "Understanding of a convolutional neural network," in *2017 International Conference on Engineering and Technology (ICET)*, updated applications in medical imaging, pp. 1–6, 2021.



10.22214/IJRASET



45.98



IMPACT FACTOR:
7.129



IMPACT FACTOR:
7.429



INTERNATIONAL JOURNAL FOR RESEARCH

IN APPLIED SCIENCE & ENGINEERING TECHNOLOGY

Call : 08813907089  (24*7 Support on Whatsapp)