



iJRASET

International Journal For Research in
Applied Science and Engineering Technology



INTERNATIONAL JOURNAL FOR RESEARCH

IN APPLIED SCIENCE & ENGINEERING TECHNOLOGY

Volume: 10 Issue: VI Month of publication: June 2022

DOI: <https://doi.org/10.22214/ijraset.2022.44021>

www.ijraset.com

Call:  08813907089

E-mail ID: ijraset@gmail.com

Child Mortality prediction using Machine Learning Techniques

Dr. S. Venkatesh¹, Naveenprasath. B², Praveen. K. G³, Yogesh. K⁴

¹Assistant Professor, Department of Computer Science and Engineering, Jeppiaar Engineering College

^{2, 3, 4}Students, Department of Computer Science and Engineering, Jeppiaar Engineering College

Abstract: *Children's Mortality alludes to mortality of children younger than 5. The kid death rate, in addition under-five death rate, alludes to the probability of biting the mud among birth and exactly 5 years recent. The mortality of kids in addition happens in embryo. The purpose is to analysis AI based mostly strategies for grouping of mortality vertebrate upbeat characterization brings concerning best truth. The examination of dataset by directed AI procedure (SMLT) to catch a couple of data's like, variable characteristic proof, uni-variate investigation, bi-variate and multi-variate examination, missing value medicines and dissect the data approval, data cleaning/getting prepared and knowledge illustration are done on the entire given dataset. Our examination provides a whole manual for responsiveness investigation of model boundaries on execution within the characterization of vertebrate upbeat. To propose AN AI based mostly and moreover, to seem at and examine the presentation of various AI calculations for the given dataset.*

I. INTRODUCTION

A. Data Science

Information science is an interdisciplinary field that utilizes logical strategies, cycles, calculations and frameworks to separate information and experiences from organized and unstructured information, and apply information and noteworthy bits of knowledge from information across an expansive scope of use spaces. The expression "information science" has been followed back to 1974, when Peter Naur proposed it as an elective name for software engineering. In 1996, the International Federation of Classification Societies turned into the primary gathering to highlight information science as a subject explicitly. In any case, the definition was still in transition. The expression "information science" was first authored in 2008 by D.J. Patil, and Jeff Hammerbacher, the trailblazer leads of information and investigation endeavors at LinkedIn and Facebook. In under 10 years, it has become one of the most sultry and most moving callings on the lookout. Information science is the field of study that joins area aptitude, programming abilities, and information on math and measurements to separate significant bits of knowledge from information. Information science can be characterized as a mix of math, business discernment, devices, calculations and AI strategies, all of which assist us in figuring out the concealed experiences or examples from crude information which with canning be of significant use in the development of enormous business choices.

B. Information Scientist:

Information researchers inspect which questions need addressing and where to track down the connected information. They have business discernment and insightful abilities as well as the capacity to mine, clean, and present information. Organizations use information researchers to source, make due, and break down a lot of unstructured information. Required Skills for a Data Scientist:

- Programming: Python, SQL, Scala, Java, MATLAB.
- AI: Natural Language Processing, Classification, Clustering.
- Information Visualization: Tableau, SAS, D3.js, Python, Java, R libraries.
- Large information stages: MongoDB, Oracle, Microsoft Azure, Cloudera.

II. OBJECTIVES

Reduction of child mortality is mirrored in many of the United Nations' property Development Goals and could be a key indicator of human progress. Define a tangle. The world organization expects that by 2030, countries finish preventable deaths of newborns and kids beneath five years elderly, with all countries going to scale back beneath five mortality to a minimum of as low as twenty five per one,000 live births. Parallel to notion of kid mortality is in fact maternal mortality, that accounts for 295 000 deaths throughout and following gestation and birth (as of 2017).

The overwhelming majority of those deaths (94%) occurred in low-resource settings, and most may are prevented. In lightweight of what was mentioned on top of, Cardiotocograms (CTGs) square measure an easy and value accessible choice to assess fetal health,

permitting care professionals to require action so as to stop kid and maternal mortality. The instrumentality itself works by causation ultrasound pulses and reading its response, so shedding lightweight on fetal pulse rate (FHR), fetal movements, female internal reproductive organ contractions and a lot of.

III. IMPLEMENTATION

We came up with an idea where we collect data sets and pre-process the information for our business and plan the information in the form of diagrams to verify the nature of the information and then at a later stage. In this segment, train the information using different calculations to predict the outcome.

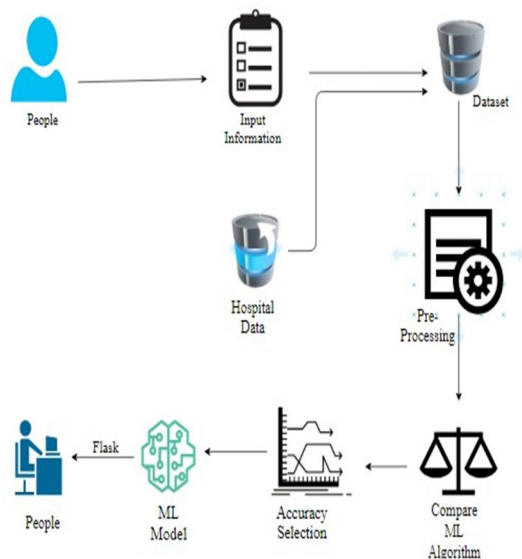


Figure 3.1 System Architecture

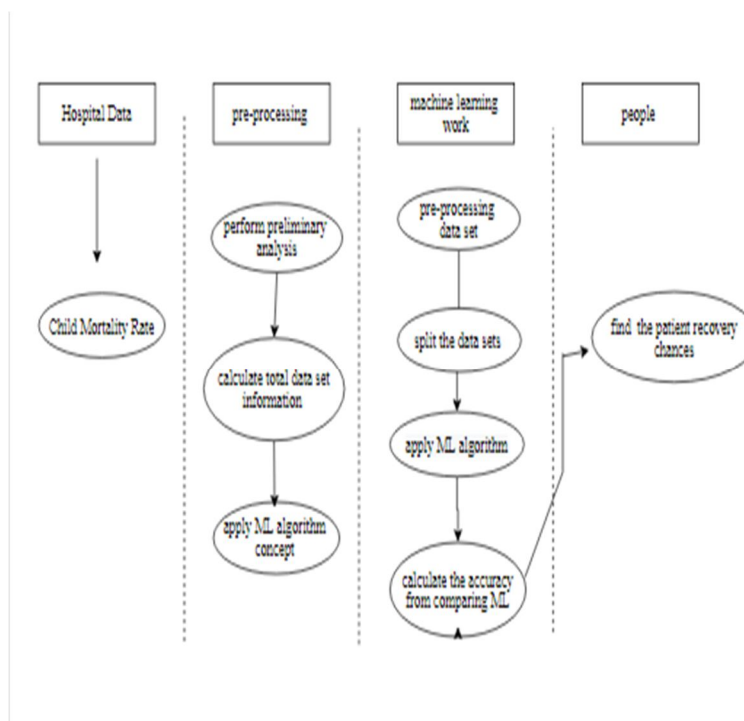


Figure 3.2 Activity Diagram

IV. PROPOSED SYSTEM

The proposed model is to build a model to predict mortality. Collected data may contain missing values which may lead to inconsistencies. To get better results, the data should be preprocessed to improve the efficiency of the algorithm. Outliers should be removed and mutable conversions should also be performed. The data set collected to predict the given data is divided into training set and test set. In general, a ratio of 7:3 is applied to divide the training set and the test set. The data model created using machine learning algorithms is applied to the training set, and based on the accuracy of the test results, the prediction of the test set is made. The model can classify mortality. Different machine learning algorithms can be compared and the best algorithm can be used for classification.

A. Data Pre-Processing

Machine learning validation techniques are used to obtain the error rate of a machine learning (ML) model, which can be considered close to the actual error rate of the data set. If the data volume is large enough to represent the set, you may not need validation techniques. However, in real-world situations, working with data samples may not be a true representation of a given data set. To find the missing value, double the value and description of the data type, whether it's a float variable or an integer. The data sample is used to provide an objective assessment of the fit of a model on the training dataset when adjusting the model's hyperparameters. Evaluation becomes more biased when validation dataset skills are incorporated into model setup. The validation set is used to evaluate a given model, but it is a routine evaluation. As machine learning engineers, they use this data to refine the model's hyperparameters. Data collection, data analysis, and content processing, data quality and structure can form a tedious to-do list. During data identification, it helps to understand your data and its attributes; This knowledge will help you decide which algorithm to use to build your model

B. Classification Model

- 1) *Data Analysis of Visualization:* Data visualization is an important skill in applied statistics and machine learning. Statistics focuses on quantitative description and estimation of data. Data visualization provides an important set of tools for gaining qualitative insights. This can be useful when exploring and uncovering a data set, and can help identify patterns, corrupted data, outliers, and more. With a little domain knowledge, data visualization can be used to represent and demonstrate key relationships in more engaging and engaging plots and graphs than metrics. link or importance. Data visualization and exploratory data analysis are all fields, and he would recommend diving deeper into some of the books mentioned at the end. Sometimes data is meaningless until it can be visualized in a visual form, such as graphs and graphs. Being able to quickly visualize sample data and the like is an important skill in both applied statistics and applied machine learning. He'll learn about the many chart types you'll need to know when visualizing data in Python and how to use them to better understand your own data.
- 2) *Logistic Regression:* It is a statistical method for analyzing a set of data in which one or more independent variables determine an outcome. Outcomes are measured by a dichotomous variable (where only two outcomes are possible). The objective of logistic regression is to find the model that best describes the relationship between the dichotomous characteristic of interest (dependant variable = response variable or outcome variable) and a set of independent variables. establish (predict or explain). Logistic regression is a machine learning classifier algorithm used to predict the probability of a categorical dependent variable. In logistic regression, the dependent variable is a binary variable containing data encoded as 1 (yes, success, etc.) or 0 (no, failure, etc.).
- 3) *Random Forest:* Random forest or random decision forest is a synthetic learning method for classification, regression and other tasks, which works by building an infinite number of decision trees at the time of training and generating class as methods of classes (classification) or predictive mean (regression) of individual trees. Random decision forests adjust their decision tree selection habits too well to their training set. Random Forest is a type of supervised machine learning algorithm based on set learning. Cluster learning is a type of learning in which you combine multiple types of algorithms or the same algorithm over and over again to train a more robust predictive model. The Random Forest Algorithm combines several algorithms of the same type, i.e. several decision trees, to create a forest of trees, hence the name "random forest". The random forest algorithm can be used for both regression and classification tasks.
- 4) *Naïve Bayes Algorithm:* The Naive Bayes algorithm is an intuitive method that uses the probability of each attribute belonging to each class to make predictions. This is the supervised learning method you would come up with if you wanted to model a predictive modeling problem probabilistically. Naive bayes simplifies probability calculations by assuming that the probability

that each attribute belongs to a given class value is independent of all other attributes. This is a strong assumption but leads to a quick and efficient method. The probability of a class value giving the value of an attribute is called the conditional probability. By multiplying the conditional probabilities for each attribute for a given class value, we get the probability that a data instance belongs to that class. To make a prediction, we can calculate the probability of the instance belonging to each class and choose the class value with the highest probability. Naive Bayes is a statistical classification technique based on Bayes' theorem. It is one of the simplest supervised learning algorithms.. The Naive Bayes classifier is a fast, accurate and reliable algorithm. The Naive Bayes classifier has high accuracy and speed on large data sets.

- 5) *KNN Algorithm*: The K-Nearest Neighbors (KNN) algorithm is a simple, supervised machine learning algorithm that can be used to solve both classification and regression problems. It is easy to implement and understand, but has the major disadvantage of becoming significantly slower as the size of data used increases. The KNN algorithm can compete with the most accurate models because it makes very accurate predictions. Therefore, you can use the KNN algorithm for applications that require high accuracy but do not require a human readable model. The quality of the predictions depends on the measured distance. Most of the time, similar data points are close together. The KNN algorithm is based on an assumption that is true enough for the algorithm to be useful. KNN captures the idea of similarity (sometimes called distance, proximity, or proximity) to certain maths.

V. DEPLOYMENT

A. Flask (Web Frame Work)

The flask is designed for ease of use and expansion. The idea behind Flask is to create a solid starting point for using the web of varying degrees of complexity. From this point on, you are allowed to connect any gain you think you want. In addition, you are allowed to create your own modules. The perfect flask for a variety of tasks. This is especially great for prototyping. Flask relies on two external libraries: the Jinja2 layout engine and the Werkzeug WSGI toolkit. Still question why use Flask as web application framework in case we have Django, Pyramid and remember the extremely powerful web supersystem Turbogears.

VI. RESULT

Thus the project is to find the Prediction of Child Mortality under the age of 5. This is the best machine learning based techniques for classification of mortality fetal health classification results in best accuracy.

VII. CONCLUSION

The analytical method started from information improvement and process, missing worth, wildcat analysis and eventually model building and analysis. The best accuracy on public check set is higher accuracy score is are going to be determine. This application will facilitate to seek out the Prediction of children's Mortality.

REFERENCES

- [1] Yilin Yin and Chun-An Chou "A Novel Switching State Space Model for Post-ICU Mortality Prediction and Survival Analysis"IEEE journal of Biomedical and Health Informatics,2168-2194 (c) 2021.
- [2] O. Badawi and M. J. Breslow, "Readmissions and death after icu discharge: development and validation of two predictive models," PloS one, vol. 7, no. 11, p. e48758, 2012.
- [3] N. Al-Subaie, T. Reynolds, A. Myers, R. Sunderland, A. Rhodes, R. Grounds, and G. Hall, "C-reactive protein as a predictor of outcome after discharge from the intensive care: a prospective observational study," British journal of anaesthesia, vol. 105, no. 3, pp. 318–325, 2010.
- [4] D. Lee and E. Horvitz, "Predicting mortality of intensive care patients via learning about hazard," in Proceedings of the AAAI Conference on Artificial Intelligence, vol. 31, no. 1, 2017.
- [5] V. Bari, E. Vaini, V. Pistuddi, A. Fantinato, B. Cairo, B. De Maria, L. A. Dalla Vecchia, M. Ranucci, and A. Porta, "Comparison of causal and non-causal strategies for the assessment of baroreflex sensitivity in predicting acute kidney dysfunction after coronary artery bypass grafting," Frontiers in physiology, vol. 10, p. 1319, 2019.
- [6] A. Porta, R. Colombo, A. Marchi, V. Bari, B. De Maria, G. Ranuzzi, S. Guzzetti, T. Fossali, and F. Raimondi, "Association between autonomic control indexes and mortality in subjects admitted to intensive care unit," Scientific reports, vol. 8, no. 1, pp. 1–13, 2018.



10.22214/IJRASET



45.98



IMPACT FACTOR:
7.129



IMPACT FACTOR:
7.429



INTERNATIONAL JOURNAL FOR RESEARCH

IN APPLIED SCIENCE & ENGINEERING TECHNOLOGY

Call : 08813907089  (24*7 Support on Whatsapp)