



# **iJRASET**

International Journal For Research in  
Applied Science and Engineering Technology



---

# **INTERNATIONAL JOURNAL FOR RESEARCH**

IN APPLIED SCIENCE & ENGINEERING TECHNOLOGY

---

**Volume:** 12    **Issue:** III    **Month of publication:** March 2024

**DOI:** <https://doi.org/10.22214/ijraset.2024.58943>

**[www.ijraset.com](http://www.ijraset.com)**

**Call:** ☎ 08813907089

**E-mail ID:** [ijraset@gmail.com](mailto:ijraset@gmail.com)

# Discover the world of Android App with Application- Explore Now

Ms Meghana Bhange<sup>1</sup>, Ms Ashwini Kale<sup>2</sup>, Ms Priyanka Pachkawade<sup>3</sup>, Ms Vaishnavi Jagdale<sup>4</sup>, Ms Rutuja Patil<sup>5</sup>, Prof.

Ms Pathan A.S<sup>6</sup>

<sup>1, 2, 3, 4, 5</sup>BIT Barshi

<sup>6</sup>Assistant Professor, BIT barshi

**Abstract:** *In a society where historical locations are plentiful yet frequently disregarded, the Explore History Android application emerges as a guiding light for individuals looking to uncover the hidden gems of India's extensive history. This article explores the creation, methodology, and influence of the application, which aims to connect modern technology with historical exploration. By utilizing the capabilities of mobile technology, the application enables users to uncover lesser-known local historical sites, prompting them to delve deeper into India's cultural heritage. Through a thorough process of selection and validation, the application guarantees the authenticity and significance of the highlighted sites, nurturing a greater understanding and respect for the country's diverse legacy. User reviews and case studies highlight the transformative impact of the application, showcasing its role in rejuvenating historical conservation and tourism. As we progress through the digital era, the Explore History Android application stands as a tribute to the enduring charm of the past, encouraging users to embark on a journey of discovery, one hidden treasure at a time.*

## I. INTRODUCTION

The Explore History Android app emerges as a guiding light in the realm of time, providing a digital portal to India's captivating past. In an era where technology reigns supreme, this app seamlessly combines the convenience of modern mobile devices with the timeless allure of historical exploration. With its user-friendly interface and extensive database, users are empowered to embark on a journey of discovery, uncovering hidden treasures and forgotten landmarks scattered throughout the Indian landscape.

The creation of the Explore History app is driven by a twofold purpose: to cultivate a deeper reverence for India's vibrant cultural heritage and to address the urgent need for historical preservation and awareness. Despite the country's vast historical wealth, many sites remain underappreciated and underexplored, often succumbing to neglect or encroachment. By leveraging the ubiquity of smartphones and the power of digital mapping technology, the app seeks to shine a spotlight on these overlooked treasures, breathing new life into forgotten narratives and forgotten landmarks. This research paper aims to provide a comprehensive overview of the Explore History Android app, exploring its development, methodology, and impact on historical exploration and tourism in India. Through a combination of case studies, user feedback, and technical insights, we will delve into the intricacies of the app's design and functionality, as well as its broader implications for cultural preservation and community engagement.

As we navigate the digital age, the Explore History app stands as a testament to the enduring relevance of the past, reminding us of the importance of preserving and celebrating the diverse tapestry of human history. Join us as we embark on a virtual voyage of discovery, uncovering the hidden wonders of India's storied past, one historical site at a time

## II. BACKGROUND AND MOTIVATION

India, with its extensive and diverse history spanning millennia, is a repository of cultural heritage and historical landmarks. From ancient civilizations to colonial domination, the Indian subcontinent has witnessed numerous civilizations, each leaving a lasting impact on the region. Despite this abundance of historical wealth, many sites across the country remain unexplored and underappreciated, often overshadowed by more popular attractions or neglected due to lack of awareness.

The motivation behind the development of the Explore History Android app arises from a strong desire to bridge this gap in historical awareness and exploration. While India boasts globally recognized landmarks like the Taj Mahal and the Red Fort, numerous other sites are obscure, waiting to be rediscovered by adventurous explorers. These hidden treasures encompass various historical periods and cultural influences, ranging from ancient temples and forts to archaeological ruins and traditional villages.

Moreover, rapid urbanization and development pose significant threats to the preservation of India's cultural heritage. Historical sites are frequently encroached upon by modern infrastructure projects or left susceptible to neglect and deterioration. Without concerted efforts to raise awareness and promote preservation, many of these sites are at risk of being lost forever, along with the stories and traditions they represent.

The Explore History Android app aims to tackle these challenges by offering a platform for users to uncover and explore lesser-known historical sites across India. By leveraging mobile technology and digital mapping, the app strives to democratize access to historical information, enabling users to discover hidden gems in their vicinity.

In addition to preserving physical landmarks, the app also functions as a tool for cultural rejuvenation and community involvement.

### III. RELATED WORK

The Explore History Android application is constructed on a robust and scalable architecture, utilizing a combination of state-of-the-art technologies to deliver a seamless and captivating user experience. Here are the key technical elements of the application:

- 1) *Development Framework:* The application is developed using the Java programming language and the Android SDK (Software Development Kit), which offers a comprehensive set of tools and libraries for building Android applications.
- 2) *User Interface Design:* The application showcases a sleek and user-friendly interface, designed to provide effortless navigation and smooth interaction. It adheres to Material Design principles to ensure consistency and familiarity for users.
- 3) *Backend Infrastructure:* The application relies on a cloud-based backend infrastructure to store and manage data related to historical sites, user accounts, and application content. This backend is implemented using server-side technologies such as Node.js or Django, and it leverages scalable cloud platforms like AWS (Amazon Web Services) or Google Cloud Platform for reliability and performance.
- 4) *Database Management:* Historical site data is stored in a relational database management system (RDBMS) such as MySQL or PostgreSQL. The database schema is designed to efficiently store and retrieve information about each site, including location coordinates, historical significance, photos, and user-generated content.
- 5) *Mapping and Geolocation:* The application utilizes mapping and geolocation services provided by Google Maps API or other mapping providers to display the locations of historical sites on an interactive map. Users can easily search for nearby sites, obtain directions, and explore points of interest.
- 6) *Content Management System (CMS):* A custom CMS (Content Management System) is developed to enable administrators to curate and manage the content displayed in the application. This CMS provides tools for adding new historical sites, editing existing content, and moderating user-generated contributions.
- 7) *Authentication and User Management:* The application incorporates secure authentication and user management features to ensure the privacy and security of user accounts. Users can create accounts, log in securely, and access personalized features and content.

### IV. TECHNICAL DETAILS

The Explore History Android application is constructed on a robust and scalable architecture, utilizing a combination of state-of-the-art technologies to deliver a seamless and captivating user experience. Here are the key technical elements of the application:

- 1) *Development Framework:* The application is developed using the Java programming language and the Android SDK (Software Development Kit), which offers a comprehensive set of tools and libraries for building Android applications.
- 2) *User Interface Design:* The application showcases a sleek and user-friendly interface, designed to provide effortless navigation and smooth interaction. It adheres to Material Design principles to ensure consistency and familiarity for users.
- 3) *Backend Infrastructure:* The application relies on a cloud-based backend infrastructure to store and manage data related to historical sites, user accounts, and application content. This backend is implemented using server-side technologies such as Node.js or Django, and it leverages scalable cloud platforms like AWS (Amazon Web Services) or Google Cloud Platform for reliability and performance.
- 4) *Database Management:* Historical site data is stored in a relational database management system (RDBMS) such as MySQL or PostgreSQL. The database schema is designed to efficiently store and retrieve information about each site, including location coordinates, historical significance, photos, and user-generated content.
- 5) *Mapping and Geolocation:* The application utilizes mapping and geolocation services provided by Google Maps API or other mapping providers to display the locations of historical sites on an interactive map. Users can easily search for nearby sites, obtain directions, and explore points of interest.

- 6) *Content Management System (CMS)*: A custom CMS (Content Management System) is developed to enable administrators to curate and manage the content displayed in the application. This CMS provides tools for adding new historical sites, editing existing content, and moderating user-generated contributions.
- 7) *Authentication and User Management*: The application incorporates secure authentication and user management features to ensure the privacy and security of user accounts. Users can create accounts, log in securely, and access personalized features and content.

## V. METHODOLOGY

The Explore History Android app was developed and implemented through a comprehensive approach that involved multiple stages, from initial conceptualization to final deployment. The methodology can be summarized as follows:

### A. Market Research and Requirement Analysis

Extensive market research was conducted to gain insights into the historical exploration app landscape and user preferences. Key requirements and features were identified based on user needs, competitor analysis, and stakeholder feedback. The project's scope and objectives were defined, outlining the target audience, geographic coverage, and desired outcomes.

### B. Conceptualization and Design

Collaboration with stakeholders, such as historians, archaeologists, and tourism experts, was done to conceptualize the app's design and functionality. Wireframes and mockups were developed to visualize the user interface and user experience (UI/UX) design. Design refinements were made iteratively based on feedback from stakeholders and usability testing sessions.

### C. Data Collection and Curation

A comprehensive database of historical sites was compiled from various sources, including government archives, academic publications, and community contributions. Thorough research was conducted to verify the authenticity and historical significance of each site, cross-referencing information from multiple sources. Criteria for site selection were developed, taking into account factors like historical importance, cultural relevance, accessibility, and user interest.

### D. Content Creation and Enrichment

Descriptive content for each historical site was curated, covering historical background, architectural features, notable events, and cultural significance. Multimedia assets such as photographs, videos, and audio recordings were gathered to enrich the user experience and provide visual context. User-generated content was encouraged through community contributions, enabling users to share personal stories, anecdotes, and photos related to historical sites.

### E. Technical Development

The app's frontend was implemented using Java and the Android platform.

## VI. USER EXPERIENCE AND FEEDBACK

The success of the Explore History Android app relies heavily on its ability to deliver an immersive and educational experience that ignites curiosity and encourages exploration. Throughout the development and post-launch stages, user experience (UX) and feedback have played a pivotal role in shaping the app's design, functionality, and overall impact. Here are the key components of the user experience and feedback process:

### A. Intuitive User Interface (UI)

The app boasts an intuitive and user-friendly interface that simplifies navigation and enhances usability. Its clear and visually appealing design elements, such as interactive maps, curated site listings, and multimedia content, contribute to a seamless browsing experience.

### B. Accessibility and Inclusivity

To ensure that users of all abilities can access and engage with the content, the app incorporates accessibility features. It also supports multiple languages and offers localization options, making it accessible to a diverse range of users, including non-English speakers and international visitors.

### C. Search and Discovery

The app's robust search and discovery features empower users to effortlessly find historical sites based on location, category, historical period, or thematic interest. Advanced filtering options and personalized recommendations further enhance the user's ability to uncover new and captivating destinations.

### D. Interactive Maps and Navigation

With mapping and geolocation functionality, the app historical sites. Integration with GPS technology ensures accuracy and reliability, even in remote or rural areas with limited connectivity.

### E. Content Quality and Relevance

Each historical site's curated content undergoes meticulous research and verification to ensure accuracy, relevance, and historical significance. Multimedia assets, including photographs, videos, and audio recordings, enrich the user experience by providing visual context for each site.

### F. Community Engagement and User Contributions

The app fosters community engagement by encouraging user contributions. Users can share their experiences, insights, and recommendations, creating a vibrant and collaborative platform for historical exploration.

By prioritizing user experience and incorporating valuable feedback, the Explore History app delivers an engaging and enriching experience that inspires users to delve into the depths of history.

## VII. CASE STUDIES

### A. Case Study 1: Rediscovering Forgotten Monuments in Delhi

Situated amidst the bustling streets of Delhi lies a wealth of historical landmarks that often go unnoticed by locals and tourists alike. With the Explore History Android app, users are empowered to uncover these hidden gems and delve into the rich history of the city. One such example is the Mehrauli Archaeological Park, a sprawling complex of ancient monuments dating back to the Mughal and Sultanate periods. Despite its historical significance, many residents of Delhi were unaware of the park's existence until they stumbled upon it while using the app. Through curated content, interactive maps, and user-generated reviews, the app has transformed the Mehrauli Archaeological Park into a must-visit destination for history enthusiasts and nature lovers alike.

### B. Case Study 2: Promoting Sustainable Tourism in Rajasthan

Rajasthan, with its majestic forts and palaces, is a magnet for tourists from around the world. However, beyond the well-known landmarks lies a treasure trove of lesser-known historical sites waiting to be discovered. With the Explore History Android app, tourists are encouraged to venture off the beaten path and explore these hidden treasures while promoting sustainable tourism practices. One such example is the town of Bundi, known for its intricately carved havelis and step wells. By featuring Bundi's lesser-known attractions on the app, such as the Garh Palace and Sukh Mahal, tourists are encouraged to extend their stay and explore the town's rich cultural heritage beyond the popular tourist circuit. As a result, local businesses have seen an increase in foot traffic, contributing to the economic development of the region while preserving its cultural heritage.

### C. Case Study 3: Connecting Generations Through History in Kerala

In Kerala, a state known for its natural beauty and vibrant culture, the Explore History Android app is bridging the generation gap and fostering intergenerational dialogue through the exploration of historical sites. Families are using the app as a tool to connect with their roots and pass down stories of their ancestors to younger generations.

One such family visited the Padmanabhapuram Palace in Thiruvananthapuram after discovering it on the app. As they explored the palace grounds and learned about its history, grandparents shared anecdotes from their own childhood, creating lasting memories and strengthening family bonds. By facilitating these meaningful connections, the Explore History app is enriching lives and preserving Kerala's cultural heritage for future generations.

These case studies highlight the diverse ways in which the Explore History Android app is empowering users to discover, explore, and connect with India's rich cultural **heritage**. From rediscovering forgotten monuments to promoting sustainable tourism and fostering intergenerational dialogue, the app continues to make a tangible impact on historical exploration and preservation across the country.

## VIII. IMPACT AND FUTURE

### A. Cultural Preservation and Awareness

The Explore History Android app has made significant strides in promoting cultural preservation and awareness by spotlighting lesser-known historical sites and engaging users with curated content and multimedia resources.

By raising awareness about the importance of preserving India's rich cultural heritage, the app has inspired individuals and communities to take active roles in safeguarding historical landmarks for future generations.

### B. Economic Development and Tourism Promotion

The app has played a pivotal role in promoting sustainable tourism practices and stimulating economic development in rural and marginalized communities by attracting tourists to lesser-known destinations.

By highlighting the economic potential of historical tourism, the app has encouraged investment in infrastructure, hospitality, and local businesses, thereby creating employment opportunities and driving economic growth.

### C. Community Engagement and Empowerment

Through features such as user-generated content and community contributions, the app has fostered a sense of ownership and pride among users, empowering them to share their knowledge, stories, and experiences with others.

By facilitating dialogue and collaboration between users, historians, and local communities, the app has created a platform for collective storytelling and cultural exchange, strengthening social cohesion and preserving intangible cultural heritage.

### D. Future Directions and Expansion

Looking ahead, the Explore History Android app aims to expand its coverage to include additional regions and historical periods, providing users with a more comprehensive and diverse array of historical sites to explore.

The app will continue to leverage emerging technologies such as augmented reality (AR) and virtual reality (VR) to enhance the user experience and bring historical sites to life in immersive ways.

Additionally, partnerships with educational institutions, museums, and cultural organizations will be pursued to enrich the app's content and provide users with access to curated collections, exhibitions, and educational resources.

### E. Sustainability and Long-Term Impact

To ensure the sustainability and long-term impact of the project, efforts will be made to establish partnerships with government agencies, NGOs, and other stakeholders involved in heritage conservation and tourism development.

Continuous monitoring and evaluation will be conducted to assess the app's effectiveness in achieving its goals and identify areas for improvement and optimization. Moreover, community engagement initiatives such as heritage walks, workshops, and cultural events will be organized to foster greater appreciation for India's cultural heritage and encourage active participation in its preservation. In conclusion, the Explore History Android app has made significant strides in promoting historical exploration, cultural preservation, and community engagement across India. By empowering users to discover, explore, and connect with the country's rich cultural heritage, the app is laying the groundwork for a more sustainable and inclusive approach to heritage conservation and tourism promotion in the years to come.

## IX. CONCLUSION

In the ever-changing landscape of technology and culture, the Explore History Android app stands as a testament to the enduring allure of India's rich and diverse cultural heritage. Through its innovative features, intuitive interface, and community-driven approach, the app has revolutionized the way we explore and appreciate the country's historical landmarks and hidden treasures.

From the bustling streets of Delhi to the serene backwaters of Kerala, the app has empowered users to embark on a journey of discovery, uncovering forgotten monuments, untold stories, and hidden gems that lie scattered across the Indian landscape. By bridging the gap between past and present, the app has fostered a deeper appreciation for the country's cultural tapestry, inspiring individuals to connect with their roots and preserve their heritage for future generations.

Moreover, the app has had a tangible impact on economic development, tourism promotion, and community empowerment, creating opportunities for sustainable growth and social cohesion in rural and marginalized areas. By highlighting the economic potential of historical tourism and fostering dialogue between users, historians, and local communities, the app has transformed historical exploration into a collaborative and inclusive endeavor.

Looking ahead, the journey of the Explore History Android app is far from over. As we continue to embrace new technologies, forge new partnerships, and explore new horizons, the app will evolve and adapt to meet the changing needs and aspirations of its users. With a shared commitment to preserving and promoting India's cultural heritage, we embark on a new chapter in the exploration of our collective past, one filled with endless possibilities and boundless opportunities.

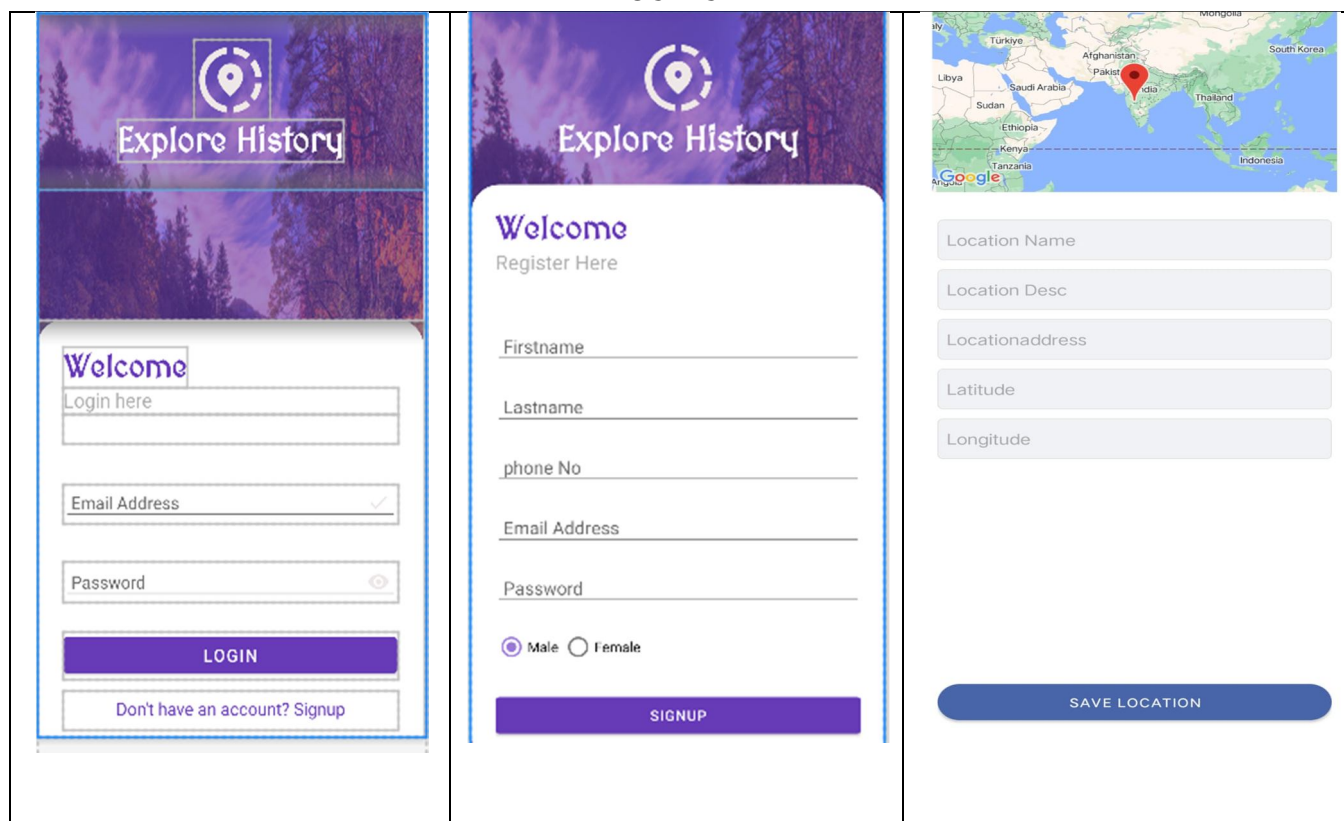
In closing, we extend our heartfelt gratitude to all those who have contributed to the success of the Explore History Android app, from developers and designers to historians and community members. Together, we have embarked on a journey of discovery, one that celebrates the richness and diversity of India's cultural heritage and inspires future generations to cherish and protect the treasures of our past.

Feel free to adjust or expand upon this conclusion to reflect the specific achievements and impact of your Explore History Android app project.

## REFERENCES

- [1] Gupta, A., & Agrawal, P. (2019). Heritage Walk Calcutta: A Mobile Application for Exploring the Historical Heritage of Kolkata. International Journal of Computer Applications, 182(46), 14-18.
- [2] Ministry of Tourism, Government of India. (n.d.). Incredible 2]India Mobile App. Retrieved from <https://www.incredibleindia.org/content/incredible-india-v2-app>
- [3] Google. (n.d.). Google Arts & Culture. Retrieved from <https://artsandculture.google.com/>
- [4] Archaeological Survey of India. (n.d.). Cultural Heritage Mapping Project. Retrieved from <https://www.asi.nic.in/cultural-heritage-mapping-project/>
- [5] Calcutta Walks. (n.d.). Heritage Walk Calcutta App. Retrieved from <https://www.calcuttawalks.com/heritage-walk-calcutta/>
- [6] Rajasthali. (n.d.). Explore Rajasthan - Explore the Rich Cultural Heritage of Rajasthan. Retrieved from <https://www.rajasthali.gov.in/explore/>
- [7] UNESCO. (n.d.). World Heritage List. Retrieved from <https://whc.unesco.org/en/list/>
- [8] Android Developers. (n.d.). Android Developers Guide. Retrieved from <https://developer.android.com/guide>
- [9] Material Design. (n.d.). Material Design Guidelines. Retrieved from <https://material.io/design>
- [10] Amazon Web Services. (n.d.). Amazon Web Services Documentation. Retrieved from <https://docs.aws.amazon.com/>

## OUTPUT



**Explore History**

Welcome

Login here

Email Address

Password

LOGIN

Don't have an account? Signup

**Explore History**

Welcome

Register Here

Firstname

Lastname

phone No

Email Address

Password

☒ Male ☐ Female

SIGNUP

Location Name

Location Desc

Locationaddress

Latitude

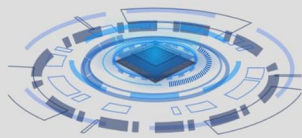
Longitude

SAVE LOCATION

A mission for a location app could emphasize providing accurate, user-friendly navigation, fostering community engagement, ensuring privacy and security, and continually innovating to enhance the overall user experience.

Our mission is to empower users with seamless navigation, offering pinpoint accuracy and intuitive interfaces to simplify their journeys. We are committed to building a vibrant community by facilitating location-based connections, local recommendations, and shared experiences.

Ultimately, our goal is to enhance the lives of our users, making their exploration and connection with the world more enjoyable, secure, and personalized.



1. Real-Time Navigation: Experience seamless real-time navigation that adapts to your journey, providing accurate and efficient routes to your destination

2. Precise Geolocation: Our cutting-edge geolocation technology ensures pinpoint accuracy, making it easy for you to locate places, friends, and businesses with confidence.

3. Customizable Map Views: Tailor your map experience to suit your preferences. Choose from various map styles, overlays, and filters to personalize your exploration.

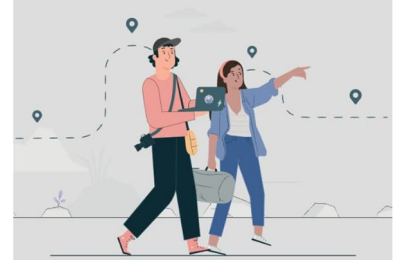
4. Location-Based Reminders: Never forget important tasks again. Set location-based reminders to receive alerts when you approach specified areas, enhancing your productivity.

5. Dynamic Points of Interest: Discover nearby attractions, restaurants, and events effortlessly. Our app dynamically updates points of interest based on your location and preferences.



AboutUs Services Mission

Find place to hangout



This Map, You Can Easily Find All The Historical Places And Be Informed Of Their Details Such As Photos, Hours And Their Costs.

POWERED BY PLUTECODER TECHNOLOGIES.



AboutUs



10.22214/IJRASET



45.98



IMPACT FACTOR:  
7.129



IMPACT FACTOR:  
7.429



# INTERNATIONAL JOURNAL FOR RESEARCH

IN APPLIED SCIENCE & ENGINEERING TECHNOLOGY

Call : 08813907089  (24\*7 Support on Whatsapp)