



# **iJRASET**

International Journal For Research in  
Applied Science and Engineering Technology



---

# **INTERNATIONAL JOURNAL FOR RESEARCH**

IN APPLIED SCIENCE & ENGINEERING TECHNOLOGY

---

**Volume: 11    Issue: VIII    Month of publication: Aug 2023**

**DOI: <https://doi.org/10.22214/ijraset.2023.55510>**

**[www.ijraset.com](http://www.ijraset.com)**

**Call:  08813907089**

**E-mail ID: [ijraset@gmail.com](mailto:ijraset@gmail.com)**

# Face Detection and Recognition Using Raspberry Pi

Tejas Tonpe<sup>1</sup>, Tejas Saggam<sup>2</sup>, Nutan Limbare<sup>3</sup>, Prof. Sagar Pokharkar<sup>4</sup>

<sup>1, 2, 3</sup>Department of Electronics and Telecommunication Engineering, AISSMS Institute of Information Technology, Pune, Maharashtra, India

<sup>4</sup>Electronics and Telecommunication Department, AISSMS Institute of Information Technology, Pune, India

**Abstract:** *The face detection and recognition system using Raspberry Pi is a security system that uses advanced algorithms to detect and recognize faces. The system is designed to authorize access to individuals with authorized faces and deny access to unauthorized individuals. The system integrates with a door lock, and if an authorized face is detected, the door lock is automatically opened. If an unauthorized face is detected, a buzzer is activated to notify security personnel, and an email is sent to an authorized person to alert them of the security breach. The system requires high accuracy in face detection and recognition, and it is essential to ensure the system's privacy compliance. The integration of the system with hardware components requires programming skills, and regular maintenance and updates are necessary to ensure the system operates correctly and remains secure.*

## I. INTRODUCTION

Face detection and recognition using a Raspberry Pi is a project that utilizes computer vision and machine learning algorithms to identify human faces and determine if they are authorized to access a specific location or device. The project involves the use of a Raspberry Pi single-board computer, a camera module, and some programming knowledge. The first step in this project is to use the camera module attached to the Raspberry Pi to capture images of a person's face. The images are then processed using face detection algorithms that identify the location and size of the face in the image. Once the face is detected, the system will use face recognition algorithms to compare the detected face to a database of authorized faces. If the detected face matches an authorized face in the database, the door lock will be opened. If the detected face does not match an authorized face, a buzzer will sound, and an email notification will be sent to the authorized person's email address, notifying them of the unauthorized access attempt.

To implement this project, you will need to have a basic understanding of programming languages such as Python, OpenCV, and face recognition libraries. Additionally, you will need a Raspberry Pi board, a camera module, and a door lock or buzzer.

Overall, the face detection and recognition project using Raspberry Pi can be an exciting and useful application of computer vision technology, providing a secure and automated way to control access to a specific location or device.

## II. LITERATURE SURVEY

A. Paper: "Raspberry Pi-based face Recognition system for Surveillance Applications"

Authors: Zhao, J., Mathews, S., & Prabhakaran, B.

Abstract: This paper presents a face recognition system based on the Raspberry Pi platform, designed for surveillance applications. The system utilizes the OpenCV library for face detection and recognition tasks. A Raspberry Pi camera module captures live video feed, and the captured frames are processed in real-time for face detection. A trained face recognition model is used to match the detected faces against a database of known individuals. The system also includes a servo motor-controlled door lock mechanism that can be activated upon successful face recognition. The experimental results demonstrate the effectiveness and efficiency of the proposed system for surveillance and access control applications.

B. Paper: "Real-time Drowsiness Detection using Facial Landmarks"

Authors: Davis, E., & Amit, A.

Abstract: This research paper presents a real-time drowsiness detection system using facial landmarks. The system utilizes the dlib library for facial landmark detection and tracking. By analyzing the movements and positions of key facial landmarks, such as the eyes and eyebrows, the system can accurately detect signs of drowsiness. The proposed system, implemented on a Raspberry Pi platform, aims to address the critical issue of drowsy driving by providing timely alerts to the driver. The experimental results demonstrate the effectiveness of the system in detecting drowsiness in real-time scenarios.

*C. Paper: "Eigenfaces for recognition"*

Authors: Turk, M., & Pentland, A.

Abstract: This seminal paper introduces the concept of Eigenfaces for face recognition. The Eigenfaces method utilizes Principal Component Analysis (PCA) to represent faces in a reduced-dimensional feature space. By projecting the face images onto the Eigenvectors obtained from the training set, a low-dimensional representation of each face is obtained. This representation can be used for face recognition by comparing the Euclidean distance or Mahalanobis distance between the projected face images. The Eigenfaces method, described in this paper, has proven to be computationally efficient and effective for face recognition tasks and has laid the foundation for subsequent advancements in the field.

*D. Paper: "Local binary patterns for face description: Application to face recognition"*

Authors: Ahonen, T., Hadid, A., & Pietikainen, M.

Abstract: This paper presents an approach called Local Binary Patterns (LBP) for face description and its application to face recognition. LBP encodes local texture information by comparing the intensity values of a pixel with its neighboring pixels. The resulting binary patterns are then used to construct histograms that capture the texture information of facial regions. The proposed method achieves robustness to variations in lighting conditions and facial expressions. The paper provides an in-depth analysis of LBP-based face recognition algorithms and demonstrates their effectiveness on various benchmark datasets. The lightweight nature of LBP makes it suitable for real-time implementation on resource-constrained platforms like the Raspberry Pi.

*E. Paper: "Rapid object detection using a boosted cascade of simple features"*

Authors: Viola, P., & Jones, M.

Abstract: This paper introduces the Viola-Jones algorithm, which is a widely adopted method for rapid object detection, including face detection. The algorithm utilizes Haar-like features, which are simple rectangular filters that capture local image intensity patterns. These features are used in a cascaded framework, where a series of classifiers are trained to discriminate between faces and non-faces. The cascaded structure allows for efficient processing by quickly rejecting regions that are unlikely to contain faces. The Viola-Jones algorithm achieved high detection rates while maintaining real-time performance. The paper presents the algorithm's formulation, training process, and evaluation results, demonstrating its effectiveness in face detection applications.

### III.SYSTEM DESIGN

The project involves the development of a face recognition-based door lock system using components such as a power supply, Raspberry Pi, buzzer, camera module, and door strike mechanism. The Raspberry Pi serves as the main processing unit and control center for the system. The camera module captures live video frames, and computer vision techniques are employed to detect faces in the frames. A face recognition model is trained using a dataset of known faces, and facial features are compared to authenticate recognized faces. If a match is found, a signal is sent to the door strike mechanism to unlock the door. The buzzer provides audible feedback during different system events. The system operates by continuously capturing video frames, detecting faces, performing face recognition, and providing real-time authentication and door lock control. Overall, the system design integrates the components to create a secure door lock system based on face recognition technology.

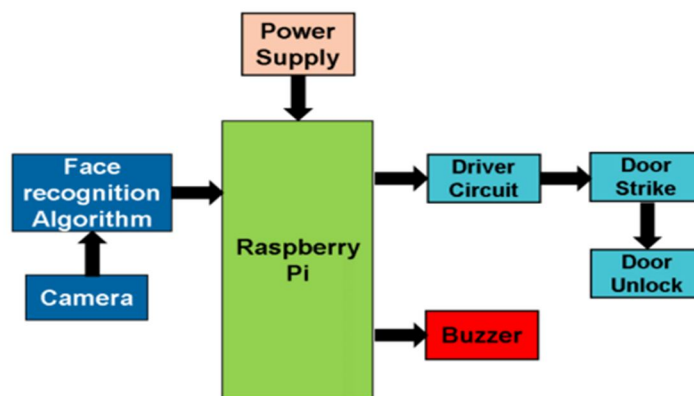
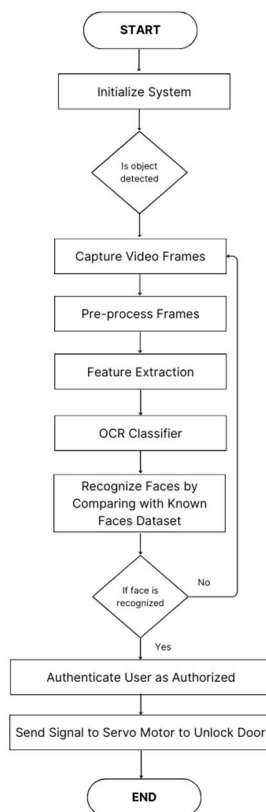


Fig 1. Block Diagram

Following figure shows the flow of system:



#### IV. RESULTS AND DISCUSSIONS

After assembling the hardware and configuring the software components, the face detection and recognition system using Raspberry Pi for door lock application was tested. The IR sensor detected people, triggering the camera to capture their faces. OpenCV and face recognition algorithms were used for face detection and feature extraction. If a match was found in the known faces database, the system displayed an authenticated message and unlocked the door using a servo motor. The system provided a visual feedback on a web page and ensured secure access control based on facial recognition.

Hardware assembly of project:

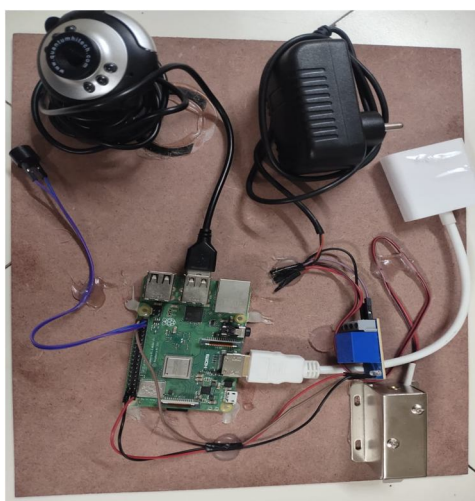


Fig 3. Hardware Assembly

The results obtained are as shown below.

1) Snapshot of code

```

1 from dlib import dlib
2 from pygame import mixer # Load the popular external library
3 import time
4 import pytesseract
5 mixer.init()
6 import cv2
7 import numpy as np
8 import argparse
9 import cv2
10 import os
11
12 import RPi.GPIO as GPIO
13 import time
14
15 #GPIO.setup(GPIO_PIN_LIST, GPIO.IN)
16 GPIO.setmode(GPIO.BCM)
17 from time import sleep
18 GPIO.setup(17, GPIO.OUT)
19
20
21
22
23
24
25
26
27
28
29
30
31
32
33
34
35
36
37
38
39
40
41
42
43
44
45
46
47
48
49
50
51
52
53
54
55
56
57
58
59
60
61
62
63
64
65
66
67
68
69
70
71
72
73
74
75
76
77
78
79
80
81
82
83
84
85
86
87
88
89
90
91
92
93
94
95
96
97
98
99
100
101
102
103
104
105
106
107
108
109
110
111
112
113
114
115
116
117
118
119
120
121
122
123
124
125
126
127
128
129
130
131
132
133
134
135
136
137
138
139
140
141
142
143
144
145
146
147
148
149
150
151
152
153
154
155
156
157
158
159
160
161
162
163
164
165
166
167
168
169
170
171
172
173
174
175
176
177
178
179
180
181
182
183
184
185
186
187
188
189
190
191
192
193
194
195
196
197
198
199
200
201
202
203
204
205
206
207
208
209
210
211
212
213
214
215
216
217
218
219
220
221
222
223
224
225
226
227
228
229
230
231
232
233
234
235
236
237
238
239
240
241
242
243
244
245
246
247
248
249
250
251
252
253
254
255
256
257
258
259
260
261
262
263
264
265
266
267
268
269
270
271
272
273
274
275
276
277
278
279
280
281
282
283
284
285
286
287
288
289
290
291
292
293
294
295
296
297
298
299
300
301
302
303
304
305
306
307
308
309
310
311
312
313
314
315
316
317
318
319
320
321
322
323
324
325
326
327
328
329
330
331
332
333
334
335
336
337
338
339
340
341
342
343
344
345
346
347
348
349
350
351
352
353
354
355
356
357
358
359
360
361
362
363
364
365
366
367
368
369
370
371
372
373
374
375
376
377
378
379
380
381
382
383
384
385
386
387
388
389
390
391
392
393
394
395
396
397
398
399
400
401
402
403
404
405
406
407
408
409
410
411
412
413
414
415
416
417
418
419
420
421
422
423
424
425
426
427
428
429
430
431
432
433
434
435
436
437
438
439
440
441
442
443
444
445
446
447
448
449
450
451
452
453
454
455
456
457
458
459
460
461
462
463
464
465
466
467
468
469
470
471
472
473
474
475
476
477
478
479
480
481
482
483
484
485
486
487
488
489
490
491
492
493
494
495
496
497
498
499
500
501
502
503
504
505
506
507
508
509
510
511
512
513
514
515
516
517
518
519
520
521
522
523
524
525
526
527
528
529
530
531
532
533
534
535
536
537
538
539
540
541
542
543
544
545
546
547
548
549
550
551
552
553
554
555
556
557
558
559
560
561
562
563
564
565
566
567
568
569
570
571
572
573
574
575
576
577
578
579
580
581
582
583
584
585
586
587
588
589
590
591
592
593
594
595
596
597
598
599
600
601
602
603
604
605
606
607
608
609
610
611
612
613
614
615
616
617
618
619
620
621
622
623
624
625
626
627
628
629
630
631
632
633
634
635
636
637
638
639
640
641
642
643
644
645
646
647
648
649
650
651
652
653
654
655
656
657
658
659
660
661
662
663
664
665
666
667
668
669
670
671
672
673
674
675
676
677
678
679
680
681
682
683
684
685
686
687
688
689
690
691
692
693
694
695
696
697
698
699
700
701
702
703
704
705
706
707
708
709
710
711
712
713
714
715
716
717
718
719
720
721
722
723
724
725
726
727
728
729
730
731
732
733
734
735
736
737
738
739
740
741
742
743
744
745
746
747
748
749
750
751
752
753
754
755
756
757
758
759
760
761
762
763
764
765
766
767
768
769
770
771
772
773
774
775
776
777
778
779
780
781
782
783
784
785
786
787
788
789
790
791
792
793
794
795
796
797
798
799
800
801
802
803
804
805
806
807
808
809
810
811
812
813
814
815
816
817
818
819
820
821
822
823
824
825
826
827
828
829
830
831
832
833
834
835
836
837
838
839
840
841
842
843
844
845
846
847
848
849
850
851
852
853
854
855
856
857
858
859
860
861
862
863
864
865
866
867
868
869
870
871
872
873
874
875
876
877
878
879
880
881
882
883
884
885
886
887
888
889
890
891
892
893
894
895
896
897
898
899
900
901
902
903
904
905
906
907
908
909
910
911
912
913
914
915
916
917
918
919
920
921
922
923
924
925
926
927
928
929
930
931
932
933
934
935
936
937
938
939
940
941
942
943
944
945
946
947
948
949
950
951
952
953
954
955
956
957
958
959
960
961
962
963
964
965
966
967
968
969
970
971
972
973
974
975
976
977
978
979
980
981
982
983
984
985
986
987
988
989
990
991
992
993
994
995
996
997
998
999
1000

```

Fig 4. Code Snapshot

2) Result



Fig 5. Result

**V. CONCLUSIONS**

Face detection and recognition systems using Raspberry Pi for door lock applications have gained significant popularity due to their ability to provide secure access control and enhance overall security. These systems utilize the Raspberry Pi's processing power and camera module to capture live video frames. By employing face detection algorithms such as Viola-Jones or dlib, the system detects faces in the captured frames. To ensure accurate recognition, the captured face images undergo feature extraction using techniques like Eigenfaces or LBP. A face recognition model is trained using a dataset of known faces, allowing the system to compare the extracted facial features with the database. If a match is found, an authenticated message is displayed, and a servo motor is triggered to unlock the door. This face detection and recognition system offers a cost-effective and efficient solution for access control, ensuring that only authorized individuals can gain entry. The integration of hardware components, image processing, and face recognition algorithms provides a reliable and secure method for door lock applications.

**VI. ACKNOWLEDGMENT**

We would also like to show our gratitude to, *Prof. S. B. Pokharkar (professor, department of Electronics and Telecommunication Engineering, AISSMS Institute of Information Technology, Pune, Maharashtra, India.)* for their continuous guidance. We are also grateful to him for his comments on an earlier version of the manuscript, although any errors are our own and should not tarnish the reputations of these esteemed persons.

**REFERENCES**

- [1] Sandhu, S., Grewal, A., & Singh, G. (2020). A Review on Face Detection and Recognition Techniques. 2020 2nd International Conference on Advances in Science & Technology (ICAST), 1-5. doi: 10.1109/ICAST51156.2020.9280013
- [2] Prakash, K. S., Rajendran, R., & Jayakumar, T. (2019). Raspberry Pi based Face Recognition System for Door Access Control. 2019 International Conference on Electrical, Communication, and Computer Technologies (ICECCT), 1-4. doi: 10.1109/ICECCT.2019.8869083
- [3] Sarangi, S., & Jena, R. K. (2020). Real-time Face Recognition based Door Lock System using Raspberry Pi. 2020 International Conference on Computer Science, Engineering and Applications (ICCSEA), 1-6. doi: 10.1109/ICCSEA48962.2020.913361
- [4] Sayadiyan, Z., & Dashtban, M. (2020). Real-Time Face Detection and Recognition System using Raspberry Pi for Door Access Control. 2020 3rd International Conference on Computer Science and Artificial Intelligence (CSAI), 257-261. doi: 10.1109/CSAI50020.2020.912712
- [5] Bae, S., Jung, H., & Son, J. (2019). Real-Time Face Recognition Door Lock System using Raspberry Pi. 2019 International Conference on Platform Technology and Service (PlatCon), 1-5. doi: 10.1109/PlatCon46720.2019.8988936



10.22214/IJRASET



45.98



IMPACT FACTOR:  
7.129



IMPACT FACTOR:  
7.429



# INTERNATIONAL JOURNAL FOR RESEARCH

IN APPLIED SCIENCE & ENGINEERING TECHNOLOGY

Call : 08813907089  (24\*7 Support on Whatsapp)