



# IJRASET

International Journal For Research in  
Applied Science and Engineering Technology



---

# INTERNATIONAL JOURNAL FOR RESEARCH

IN APPLIED SCIENCE & ENGINEERING TECHNOLOGY

---

**Volume:** 14    **Issue:** VI    **Month of publication:** June 2026

**DOI:** <https://doi.org/10.22214/ijraset.2026.83406>

[www.ijraset.com](http://www.ijraset.com)

Call:  08813907089

E-mail ID: [ijraset@gmail.com](mailto:ijraset@gmail.com)

# Generative AI for Healthcare: Foundation Models, Clinical Applications, Ethical Considerations, and Regulatory Challenges

Parag Jain<sup>1</sup>, Roopesh Kumar Sharma<sup>2</sup>, Saniya Koser<sup>3</sup>, Shivali Shukla<sup>4</sup>

<sup>1,2,3,4</sup>Assistant Professor, Department of Computer Science & Engineering, Chameli Devi Group of Institutions, Indore

**Abstract:** *Generative Artificial Intelligence (GenAI) has emerged as a transformative technology with the potential to revolutionize healthcare by enabling intelligent content generation, predictive analytics, clinical decision support, and personalized patient care. Recent advancements in foundation models, including Large Language Models (LLMs), Generative Adversarial Networks (GANs), Diffusion Models, and Multimodal Foundation Models, have significantly expanded the capabilities of artificial intelligence in healthcare applications. These technologies support a wide range of functions, including medical imaging, disease diagnosis, healthcare documentation, synthetic data generation, personalized medicine, mental health interventions, and patient engagement. Despite these promising developments, the integration of GenAI into healthcare systems presents substantial challenges related to algorithmic bias, explainability, trustworthiness, data privacy, cybersecurity, and regulatory compliance. This study provides a comprehensive review of the current landscape of Generative AI in healthcare by examining the underlying foundation models, major clinical applications, ethical considerations, privacy concerns, and emerging regulatory frameworks. The review also identifies critical research gaps, including the lack of large-scale clinical validation, limited governance frameworks, and insufficient standardization of evaluation methodologies. Furthermore, future research directions are discussed, emphasizing trustworthy AI, multimodal intelligence, privacy-preserving technologies, and human-centered healthcare innovation. The findings suggest that while Generative AI has the potential to transform healthcare delivery and improve patient outcomes, its successful implementation depends on the development of robust governance mechanisms, ethical safeguards, and regulatory standards that ensure safe, transparent, and equitable healthcare practices.*

**Keywords:** *Generative Artificial Intelligence (GenAI); Healthcare; Foundation Models; Large Language Models (LLMs); Generative Adversarial Networks (GANs); Diffusion Models; Multimodal AI; Clinical Decision Support; Personalized Medicine; Medical Imaging; Explainable AI; Data Privacy; Healthcare Governance; Regulatory Compliance.*

## I. INTRODUCTION

The healthcare industry is undergoing a profound digital transformation driven by rapid advancements in artificial intelligence (AI), big data analytics, cloud computing, and intelligent automation. Among these technological innovations, Generative Artificial Intelligence (GenAI) has emerged as one of the most disruptive and influential developments in recent years. Unlike traditional AI systems that primarily focus on classification, prediction, and pattern recognition, Generative AI possesses the capability to create new content, generate human-like text, synthesize realistic images, produce synthetic datasets, and support complex decision-making processes. These capabilities have positioned GenAI as a powerful tool for addressing many of the challenges faced by modern healthcare systems, including increasing patient volumes, rising healthcare costs, data complexity, workforce shortages, and the demand for personalized care. The emergence of foundation models has accelerated the adoption of Generative AI across various healthcare domains. Foundation models are large-scale neural networks trained on extensive datasets that can be adapted to multiple downstream tasks through fine-tuning and transfer learning. Prominent examples include Large Language Models (LLMs), Generative Adversarial Networks (GANs), Diffusion Models, and Multimodal Foundation Models. These technologies enable healthcare organizations to process diverse forms of medical data, including clinical notes, medical images, laboratory reports, genomic information, and patient-generated data. As a result, Generative AI has demonstrated significant potential in clinical decision support, disease diagnosis, medical imaging analysis, healthcare communication, drug discovery, predictive analytics, and personalized medicine. One of the most significant contributions of Generative AI is its ability to enhance clinical decision-making by extracting meaningful insights from large and complex healthcare datasets. AI-powered systems can assist healthcare professionals by generating evidence-based recommendations, summarizing patient information, identifying disease patterns, and

supporting treatment planning. In medical imaging, advanced generative models can improve image quality, generate synthetic imaging data, and facilitate the detection of abnormalities with greater accuracy. Similarly, in personalized medicine, GenAI enables the integration of genomic, clinical, and lifestyle data to develop individualized treatment strategies tailored to specific patient needs.

Despite its transformative potential, the adoption of Generative AI in healthcare is accompanied by several challenges and concerns. The reliability of AI-generated outputs remains a critical issue, particularly in high-stakes clinical environments where inaccurate recommendations may adversely affect patient outcomes. Generative models are susceptible to hallucinations, misinformation, and algorithmic bias, which may compromise the quality and fairness of healthcare services. Additionally, healthcare organizations must address significant concerns related to explainability, accountability, transparency, patient privacy, cybersecurity, and compliance with evolving regulatory requirements. The sensitive nature of healthcare data further amplifies the need for robust governance mechanisms that ensure ethical and responsible AI deployment.

The growing interest in Generative AI has resulted in an expanding body of research investigating its applications, benefits, and limitations in healthcare. However, much of the existing literature focuses on specific technologies or individual use cases, leaving a need for a comprehensive review that synthesizes current knowledge across technological, clinical, ethical, and regulatory dimensions. Furthermore, the rapid evolution of foundation models necessitates continuous assessment of emerging opportunities and challenges associated with their implementation in healthcare environments.

Therefore, this study aims to provide a comprehensive review of Generative AI in healthcare by examining the underlying foundation models, major clinical applications, ethical considerations, privacy challenges, and regulatory frameworks that shape its adoption. The study also identifies key research gaps and proposes future directions for advancing trustworthy, secure, and patient-centered AI systems. By consolidating current knowledge and highlighting critical challenges, this review contributes to a deeper understanding of how Generative AI can support the development of intelligent healthcare ecosystems while ensuring ethical responsibility, regulatory compliance, and improved patient outcomes.

### A. Objectives of the Study

The primary objectives of this review are:

- 1) To examine the evolution and technological foundations of Generative AI in healthcare.
- 2) To analyze major foundation models, including LLMs, GANs, Diffusion Models, and Multimodal AI systems.
- 3) To investigate the clinical applications of Generative AI across healthcare domains.
- 4) To evaluate ethical, privacy, and security challenges associated with healthcare AI adoption.
- 5) To explore emerging regulatory frameworks and governance models for responsible AI deployment.
- 6) To identify existing research gaps and propose future research directions for advancing Generative AI in healthcare.

### B. Paper Organization

The remainder of this paper is organized as follows. Section 2 presents a systematic literature review of Generative AI in healthcare. Section 3 identifies key research gaps. Section 4 discusses foundation models and core Generative AI technologies. Section 5 examines major clinical applications. Section 6 explores ethical considerations and privacy challenges. Section 7 analyzes regulatory challenges and governance frameworks. Section 8 outlines future research directions, and Section 9 concludes the study by summarizing key findings and implications.

## II. LITERATURE REVIEW

### A. Foundations and Evolution of Generative AI in Healthcare

Generative Artificial Intelligence (GenAI) has emerged as a transformative branch of artificial intelligence capable of creating new content, including text, images, synthetic data, and predictive models. Recent advancements in foundation models, particularly large language models (LLMs), diffusion models, and generative adversarial networks (GANs), have expanded the scope of AI applications in healthcare. Zheng et al. (2026) describe GenAI as a paradigm shift that enables intelligent content generation, automated reasoning, and decision support across healthcare systems. Similarly, Nakamura et al. (2026) emphasize that foundation models have established the technological basis for integrating AI into clinical workflows, medical research, and healthcare management. Several studies highlight the evolution of GenAI from traditional machine learning approaches toward more sophisticated models capable of understanding complex medical data. Kanyal and Mehta (2026) note that the integration of AI and GenAI technologies within digital healthcare ecosystems has accelerated the development of personalized healthcare solutions and

predictive analytics. Kumar et al. (2026) further argue that generative models enhance healthcare innovation by facilitating knowledge extraction from large-scale clinical datasets and enabling human-like interactions through conversational AI systems. The growing availability of healthcare data has also fueled the development of generative models for disease forecasting and health risk prediction. Chakraborty et al. (2026) propose that GenAI offers a new direction for forecasting future disease risks through advanced predictive capabilities. Furthermore, the combination of robotics and generative AI is creating opportunities for intelligent healthcare automation and patient-centered service delivery (Kumar, Mishra, & Hemanth, 2026). These developments demonstrate that foundation models represent the cornerstone of next-generation healthcare systems, supporting both clinical and operational functions.

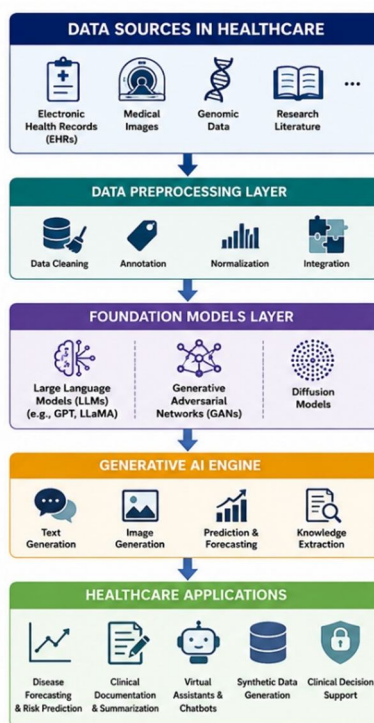


Figure 1. Architecture of Generative AI Foundation Models in Healthcare

Figure 1. Architecture of Generative AI Foundation Models in Healthcare. The figure illustrates the hierarchical workflow of Generative AI in healthcare, beginning with heterogeneous healthcare data sources and progressing through preprocessing, foundation models, and generative intelligence layers to support various healthcare applications.

The architecture demonstrates how healthcare data, including electronic health records (EHRs), medical images, genomic information, and scientific literature, are collected and processed through data cleaning, annotation, normalization, and integration procedures. The processed data are subsequently utilized by foundation models such as Large Language Models (LLMs), Generative Adversarial Networks (GANs), and diffusion models. These models power a generative AI engine capable of text generation, image synthesis, disease prediction, and knowledge extraction. The generated outputs are applied to healthcare tasks including disease forecasting, clinical documentation, virtual assistants, synthetic data generation, and clinical decision support systems.

### B. Clinical Applications and Healthcare Transformation

The application of GenAI across healthcare domains has significantly enhanced clinical decision-making, patient care, diagnostics, and operational efficiency. Fadul et al. (2025) identify clinical decision support systems, medical image analysis, disease diagnosis, and treatment planning as key areas where GenAI contributes to improved healthcare outcomes. Similarly, Rathore et al. (2026) highlight the role of natural language processing and generative models in medical documentation, patient communication, and healthcare information management. Predictive healthcare analytics has become one of the most promising applications of GenAI. David-Olawade et al. (2026) demonstrate how generative AI improves predictive modeling for cost-effectiveness analyses, enabling healthcare organizations to optimize resource allocation and strategic planning.

Likewise, Singh and Sharma (2026) report that GenAI enhances personalized medicine by generating patient-specific treatment recommendations and improving outcome prediction accuracy.

Generative AI has also shown substantial value in clinical communication and healthcare workforce support. Alsufi et al. (2026) found that AI-powered assistants can reduce administrative burdens, improve healthcare worker well-being, and enhance patient engagement through personalized communication. In oncology and clinical research, natural language processing technologies facilitate the extraction of valuable insights from clinical notes, thereby supporting patient care and medical research initiatives (Kayira et al., 2026).

Another important application involves synthetic data generation. Waseem et al. (2026) explain that synthetic healthcare datasets generated through AI models can address data scarcity issues while supporting medical research, model training, and privacy protection. Furthermore, studies have highlighted emerging applications in mental health services, where generative AI can provide personalized support, early intervention strategies, and improved accessibility to mental healthcare resources (Oo et al., 2026). Collectively, these applications demonstrate the transformative impact of GenAI across the healthcare ecosystem.

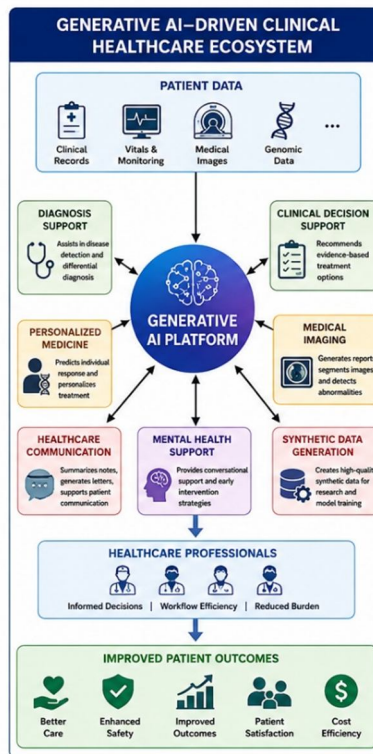


Figure 2. Generative AI-Driven Clinical Healthcare Ecosystem

Figure 2. Generative AI-Driven Clinical Healthcare Ecosystem. The figure presents an integrated healthcare ecosystem where Generative AI serves as the central intelligence platform supporting clinical decision-making, personalized medicine, diagnostics, and patient-centered care. This ecosystem illustrates the flow of patient data from multiple healthcare sources into a centralized Generative AI platform. The platform supports various healthcare functions, including diagnosis support, clinical decision support, personalized medicine, medical imaging analysis, healthcare communication, mental health assistance, and synthetic data generation. Healthcare professionals utilize AI-generated insights to improve workflow efficiency, reduce administrative burden, and support evidence-based decision-making. Ultimately, these capabilities contribute to enhanced patient outcomes, improved healthcare quality, increased patient satisfaction, and greater operational efficiency.

### C. Ethical, Privacy, and Regulatory Challenges of Generative AI in Healthcare

Despite its significant benefits, the adoption of GenAI in healthcare raises substantial ethical, privacy, and regulatory concerns. Tung et al. (2025) identify issues related to algorithmic bias, transparency, accountability, misinformation, and AI hallucinations as major barriers to safe implementation. These concerns are particularly critical in healthcare environments where inaccurate outputs can directly affect patient safety and clinical outcomes.

Privacy and data security remain central challenges due to the sensitive nature of healthcare information. Poojari (2026) argues that privacy-preserving approaches, such as federated learning, are essential for enabling secure AI deployment while maintaining patient confidentiality. Similarly, Albaroudi et al. (2024) emphasize that healthcare organizations must establish robust governance frameworks to balance innovation with ethical responsibility.

Regulatory uncertainty also poses challenges for widespread adoption. Zheng et al. (2026) and Nakamura et al. (2026) note that existing healthcare regulations often struggle to keep pace with rapidly evolving AI technologies. The lack of standardized guidelines for model validation, accountability, and clinical deployment creates risks for healthcare providers and policymakers. Furthermore, educational implications have emerged as a growing concern. Naqvi et al. (2025) highlight the need to strengthen critical thinking skills among healthcare professionals to ensure appropriate use and evaluation of AI-generated information. Alhur and Al-Kahtani (2026) similarly emphasize the importance of integrating AI literacy and health informatics education into professional training programs.



Figure 3. Ethical, Privacy, and Regulatory Governance Framework for Healthcare GenAI

Figure 3. Ethical, Privacy, and Regulatory Governance Framework for Healthcare Generative AI. The figure illustrates the major governance challenges associated with Generative AI implementation in healthcare and the mechanisms required to ensure responsible, secure, and compliant deployment.

The framework identifies three major categories of challenges: ethical risks, privacy risks, and regulatory risks. Ethical concerns include algorithmic bias, fairness, transparency, accountability, and AI hallucinations. Privacy-related challenges involve patient confidentiality, cybersecurity threats, data breaches, and unauthorized information disclosure. Regulatory challenges encompass compliance requirements, model validation standards, legal liability, and cross-border healthcare regulations. To address these concerns, the framework incorporates governance mechanisms such as Explainable AI (XAI), privacy-preserving technologies including federated learning, robust AI governance practices, and regulatory standards. Together, these mechanisms promote trustworthy, ethical, secure, and legally compliant healthcare AI systems.

Table 2. Systematic Literature Review of Generative AI in Healthcare

Ref.	Author(s) & Year	Study Focus	Methodology/Type	Key Contributions	Research Gap
R1	Zheng et al. (2026)	Foundations, applications, challenges, and future directions of GenAI in healthcare	Comprehensive Review	Provided a broad overview of GenAI technologies and healthcare applications	Limited discussion on implementation frameworks
R2	David-Olawade et al. (2026)	Predictive modeling and cost-effectiveness analysis	Research Study	Demonstrated GenAI's ability to improve healthcare economic predictions	Lack of real-world clinical validation
R3	Miracle & Adaobi (2025)	Impact of GenAI on healthcare	Book Chapter	Explored transformative impacts across healthcare sectors	Limited focus on ethical implications
R4	Fadul et al. (2025)	Models, clinical applications, and decision support	Analytical Review	Examined GenAI models and clinical decision-support systems	Limited regulatory discussion
R5	Kanyal & Mehta (2026)	AI and GenAI in digital healthcare	Book Chapter	Highlighted integration of GenAI into digital healthcare ecosystems	Limited technical implementation details
R6	Chakraborty et al. (2026)	Disease forecasting using GenAI	Short Communication	Proposed GenAI-based health risk prediction framework	Lack of experimental validation
R7	Kumar et al. (2026)	Hallucination-aware AI in healthcare	Book Chapter	Discussed trustworthy GenAI and healthcare applications	Limited practical deployment evidence
R8	Rathore et al. (2026)	Generative AI in medicine	Book Chapter	Reviewed NLP and GenAI applications in healthcare	Limited discussion on patient safety
R9	Nakamura et al. (2026)	Foundational technologies and future perspectives	Comprehensive Review	Detailed overview of foundation models and future opportunities	Insufficient governance recommendations
R10	Choudhury & Roy (2026)	AI and GenAI in digital healthcare ecosystems	Book Chapter	Discussed ecosystem-level transformation through AI	Lack of clinical evaluation metrics
R11	Kumar et al. (2026)	Robotics and GenAI integration	Edited Book	Explored AI-driven healthcare automation and robotics	Limited real-world case studies
R12	Waseem et al. (2026)	Synthetic healthcare data generation	Review Article	Evaluated GenAI methods for privacy-preserving synthetic data creation	Need for standard validation protocols
R13	Vashishth et al. (2026)	AI-enhanced healthcare services	Book Chapter	Identified service enhancement opportunities through AI	Limited empirical evidence
R14	Alhur & Al-Kahtani (2026)	GenAI in health informatics education	Bibliometric Analysis	Analyzed educational outcomes and research trends	Limited clinical applicability
R15	Tung et al. (2025)	Ethical and practical challenges	Survey Study	Identified bias, transparency, accountability, and safety concerns	Need for actionable governance frameworks

R16	Alsufi et al. (2026)	Clinical communication and healthcare worker wellbeing	Book Chapter	Demonstrated benefits of AI-assisted communication systems	Limited longitudinal studies
R17	Kumar et al. (2025)	Current practices and future development	Edited Book	Summarized healthcare GenAI applications and future directions	Limited quantitative assessment
R18	Poojari (2026)	Privacy-preserving GenAI using federated learning	Research Article	Proposed secure federated learning architecture for healthcare AI	Scalability challenges remain
R19	Kayira et al. (2026)	NLP of clinical notes in cancer care	Scoping Review	Evaluated NLP applications before widespread GenAI adoption	Limited integration with foundation models
R20	Albaroudi et al. (2024)	Challenges and patient care enhancement	Conference Paper	Discussed opportunities and barriers to GenAI adoption	Limited healthcare-specific regulations
R21	Oo et al. (2026)	GenAI in mental health	Delphi Study	Identified future opportunities for AI-assisted mental healthcare	Requires clinical effectiveness studies
R22	Singh & Sharma (2026)	Personalized medicine and outcome prediction	Book Chapter	Showed GenAI's potential for individualized treatment planning	Need for large-scale validation
R23	Pashang et al. (2026)	Clinical Decision Support Systems (CDSS)	Narrative Review	Examined integration of GenAI into CDSS frameworks	Limited deployment guidelines
R24	Naqvi et al. (2025)	Critical thinking in health sciences education	Research Article	Highlighted educational implications of GenAI adoption	Need for curriculum development frameworks

Table 2. Summary of Literature Categories

Research Theme	References	Frequency
Foundations and Architecture of GenAI	R1, R4, R5, R7, R8, R9, R17	7
Clinical Applications and Decision Support	R2, R4, R6, R10, R16, R19, R21, R22, R23	9
Synthetic Data and Predictive Analytics	R2, R6, R12, R22	4
Healthcare Service Transformation	R3, R10, R13, R16, R17	5
Ethics, Privacy, and Governance	R15, R18, R20	3
Education and Workforce Development	R14, R24	2
Robotics and Healthcare Automation	R11	1

Table 2. Systematic Literature Review of Generative AI in Healthcare. The table summarizes the major contributions, methodologies, research themes, and identified gaps across 24 recent studies on Generative AI in healthcare, covering foundation models, clinical applications, predictive analytics, ethical challenges, privacy-preserving techniques, healthcare education, and future research directions.

### III. RESEARCH GAP

Despite the rapid advancement of Generative Artificial Intelligence (GenAI) in healthcare, the existing literature reveals several significant research gaps that hinder its widespread and reliable adoption. Most studies primarily focus on the technological capabilities and potential applications of GenAI, such as clinical decision support, disease prediction, medical documentation, and personalized medicine. While these contributions demonstrate the transformative potential of foundation models, limited attention has been given to the development of standardized implementation frameworks that guide healthcare organizations in integrating

GenAI into routine clinical workflows. Consequently, there remains a lack of evidence regarding best practices for deployment, scalability, and interoperability within diverse healthcare environments.

Another important gap concerns the limited availability of real-world clinical validation studies. Although several researchers have reported promising outcomes in predictive analytics, synthetic data generation, and patient outcome prediction, much of the existing work remains conceptual, experimental, or simulation-based. Few studies have evaluated GenAI systems in actual healthcare settings involving physicians, healthcare professionals, and patients. As a result, the long-term effectiveness, reliability, safety, and clinical utility of these systems remain insufficiently understood. Furthermore, comparative studies assessing the performance of different foundation models, including Large Language Models (LLMs), Generative Adversarial Networks (GANs), and diffusion models, are scarce.

Ethical, privacy, and regulatory challenges also represent a major research gap. Existing studies acknowledge concerns such as algorithmic bias, AI hallucinations, transparency, accountability, patient privacy, and data security. However, there is limited research proposing comprehensive governance frameworks capable of addressing these challenges while maintaining innovation. In particular, the absence of universally accepted regulatory standards for validating, auditing, and monitoring GenAI systems in healthcare creates uncertainty for healthcare providers and policymakers. Future research should therefore focus on developing explainable, trustworthy, and privacy-preserving AI frameworks that align with evolving healthcare regulations and ethical principles.

Additionally, the integration of GenAI with emerging healthcare technologies remains underexplored. While some studies discuss applications involving robotics, federated learning, and digital health ecosystems, limited research investigates how these technologies can be combined to create intelligent and autonomous healthcare systems. Similarly, the role of GenAI in supporting interdisciplinary healthcare collaboration, remote patient monitoring, telemedicine, and population health management requires further investigation. Understanding these interactions is essential for maximizing the benefits of AI-driven healthcare transformation.

Finally, educational and workforce preparedness challenges have received relatively little attention in current literature. Healthcare professionals increasingly interact with AI-generated recommendations and automated decision-support systems; however, there is a lack of structured frameworks for AI literacy, critical evaluation skills, and responsible AI usage in medical education and clinical training. Future studies should examine strategies for equipping healthcare practitioners with the competencies required to effectively collaborate with AI technologies while maintaining human oversight and patient-centered care. Addressing these gaps will be critical for ensuring the safe, ethical, and sustainable adoption of Generative AI in healthcare.

#### IV. FOUNDATION MODELS AND GENERATIVE AI TECHNOLOGIES IN HEALTHCARE

Foundation models represent the technological backbone of modern Generative Artificial Intelligence (GenAI) systems in healthcare. These models are trained on large-scale datasets and possess the capability to perform a wide range of tasks, including text generation, image synthesis, predictive analytics, clinical decision support, and medical knowledge extraction. Unlike traditional machine learning approaches that require task-specific training, foundation models can be adapted to multiple healthcare applications through fine-tuning and transfer learning techniques. The emergence of these models has significantly enhanced the ability of healthcare systems to process complex medical information, automate routine tasks, and generate actionable insights from diverse data sources. Among the most influential foundation models in healthcare are Large Language Models (LLMs), Generative Adversarial Networks (GANs), Diffusion Models, and Multimodal Foundation Models, each offering unique capabilities that contribute to healthcare innovation.

##### A. Large Language Models (LLMs)

Large Language Models (LLMs) are advanced deep learning architectures trained on extensive textual datasets to understand, generate, and interpret human language. Models such as GPT, PaLM, Med-PaLM, and BioGPT have demonstrated remarkable capabilities in processing medical literature, clinical notes, patient records, and healthcare-related queries. In healthcare settings, LLMs facilitate clinical documentation, automated report generation, patient communication, medical education, and knowledge management. By leveraging natural language processing (NLP), these models can summarize patient histories, assist clinicians in drafting discharge summaries, and provide evidence-based recommendations based on medical guidelines and research findings.

The adoption of LLMs has also improved healthcare accessibility through conversational AI systems and virtual health assistants. These systems can answer patient inquiries, provide medication information, support appointment scheduling, and offer preliminary health guidance.

Furthermore, LLMs contribute to clinical decision support by extracting relevant information from unstructured healthcare data and presenting it in an interpretable format for healthcare professionals. Despite their advantages, challenges such as hallucination, bias, lack of explainability, and privacy concerns remain significant obstacles to their widespread clinical adoption. Consequently, ongoing research focuses on enhancing model reliability, transparency, and domain-specific accuracy for healthcare applications.

#### *B. Generative Adversarial Networks (GANs)*

Generative Adversarial Networks (GANs) are a class of generative models consisting of two competing neural networks: a generator and a discriminator. The generator creates synthetic data samples, while the discriminator evaluates their authenticity. Through this adversarial learning process, GANs can generate highly realistic data that closely resemble original datasets. In healthcare, GANs have become particularly valuable for addressing challenges related to limited data availability, patient privacy, and data imbalance.

One of the most important applications of GANs is synthetic medical data generation. Healthcare institutions often face restrictions on sharing patient information due to privacy regulations and ethical concerns. GANs enable the creation of realistic synthetic datasets that preserve statistical characteristics of original data without exposing sensitive patient information. These synthetic datasets can be used for model training, validation, and medical research. Additionally, GANs have demonstrated effectiveness in medical imaging applications, including image enhancement, image reconstruction, tumor detection, disease classification, and augmentation of rare disease datasets. By generating additional training samples, GANs improve the performance and robustness of diagnostic models, particularly in scenarios where labeled medical data are scarce.

#### *C. Diffusion Models*

Diffusion models represent a newer generation of generative AI technologies that have gained significant attention for their ability to generate high-quality and highly realistic images. These models operate by gradually adding noise to training data and subsequently learning to reverse the noise process to reconstruct original data. Compared with GANs, diffusion models often produce more stable training outcomes and superior image quality, making them particularly attractive for healthcare applications involving medical imaging and visualization.

In healthcare, diffusion models are increasingly utilized for generating synthetic medical images, enhancing image quality, and supporting diagnostic processes. They have shown promising results in producing realistic radiological images, magnetic resonance imaging (MRI) scans, computed tomography (CT) images, and histopathological images. These capabilities facilitate medical research, training, and diagnostic model development by expanding the availability of high-quality healthcare datasets. Furthermore, diffusion models can assist in image restoration, noise reduction, and missing-data reconstruction, thereby improving the quality of clinical imaging data. As research progresses, diffusion-based approaches are expected to play a critical role in precision diagnostics, digital pathology, and personalized healthcare solutions.

#### *D. Multimodal Foundation Models*

Multimodal Foundation Models represent the next evolution of generative AI by integrating multiple forms of data, including text, images, audio, video, genomic information, and structured clinical records. Unlike unimodal models that process only a single data type, multimodal models can analyze and synthesize information from diverse healthcare sources simultaneously. This capability enables a more comprehensive understanding of patient conditions and supports more informed clinical decision-making.

In healthcare environments, patient information is often distributed across multiple modalities, such as radiological images, laboratory reports, physician notes, genomic sequences, and wearable device data. Multimodal foundation models can combine these heterogeneous data sources to generate holistic patient assessments and personalized treatment recommendations. For example, a multimodal system may simultaneously analyze medical images and clinical notes to improve diagnostic accuracy or integrate genomic data with patient history to support precision medicine initiatives. These models also facilitate advanced clinical decision support systems, intelligent healthcare assistants, and personalized patient monitoring solutions. Although multimodal models offer substantial potential, challenges related to computational complexity, data integration, interoperability, explainability, and regulatory compliance must be addressed before widespread clinical deployment. Nevertheless, their ability to capture complex relationships across diverse healthcare data sources positions them as a promising technology for the future of intelligent healthcare systems.

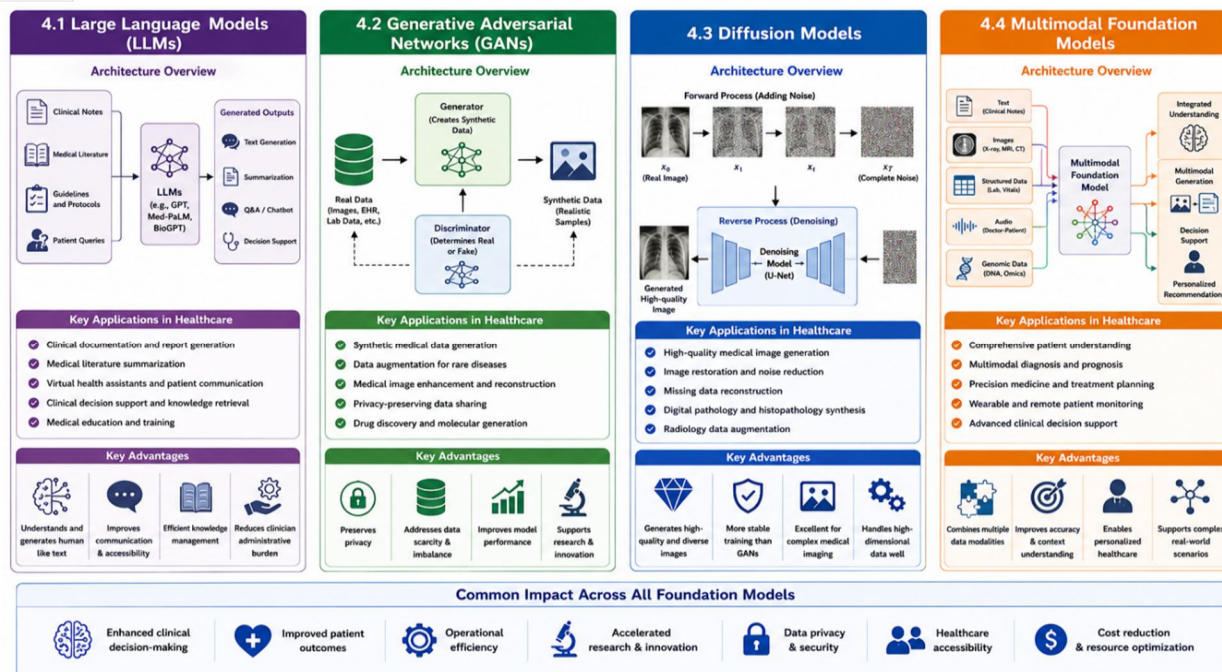


Figure 4. Foundation Models and Generative AI Technologies in Healthcare

Figure 4. Foundation Models and Generative AI Technologies in Healthcare. Overview of major generative AI foundation models, including Large Language Models (LLMs), Generative Adversarial Networks (GANs), Diffusion Models, and Multimodal Foundation Models, highlighting their architectures, healthcare applications, advantages, and contributions to healthcare transformation.

Figure 4 presents a comprehensive overview of the primary foundation models driving the adoption of Generative Artificial Intelligence (GenAI) in healthcare. The figure is organized into four sections representing Large Language Models (LLMs), Generative Adversarial Networks (GANs), Diffusion Models, and Multimodal Foundation Models. Each section illustrates the underlying architecture, key healthcare applications, and major advantages associated with the respective model type.

The LLM component demonstrates how clinical notes, medical literature, guidelines, and patient queries are processed to generate clinical documentation, knowledge retrieval, decision support, and patient communication. The GAN section depicts the adversarial learning process between generator and discriminator networks for creating synthetic healthcare data, medical image enhancement, privacy-preserving data sharing, and disease-specific data augmentation. The Diffusion Model section illustrates the forward and reverse denoising processes used to generate high-quality medical images, image restoration, radiology data augmentation, and digital pathology applications. The Multimodal Foundation Model section highlights the integration of diverse healthcare data sources, including clinical text, medical images, laboratory data, genomic information, and audio signals, to support comprehensive patient assessment, personalized medicine, multimodal diagnosis, and advanced clinical decision-making.

The bottom layer of the figure summarizes the common impact of these foundation models across healthcare systems, including enhanced clinical decision-making, improved patient outcomes, operational efficiency, accelerated medical research, strengthened data privacy and security, increased healthcare accessibility, and optimized healthcare resource utilization. Together, these technologies constitute the core infrastructure of next-generation intelligent healthcare systems and represent a significant advancement toward data-driven, personalized, and patient-centered healthcare delivery.

## V. CLINICAL APPLICATIONS OF GENERATIVE AI IN HEALTHCARE

Generative Artificial Intelligence (GenAI) is transforming healthcare by enhancing clinical decision-making, improving diagnostic accuracy, personalizing patient care, streamlining healthcare operations, and strengthening patient engagement. The ability of foundation models to generate, analyze, and interpret complex healthcare data has expanded their role across various medical domains. From assisting clinicians in diagnosis and treatment planning to supporting mental health services and healthcare documentation, GenAI has become a critical technology for advancing patient-centered and data-driven healthcare systems. The following subsections discuss the major clinical applications of Generative AI in healthcare.

### A. *Clinical Decision Support*

Clinical Decision Support Systems (CDSS) are among the most significant applications of Generative AI in healthcare. These systems assist healthcare professionals by analyzing large volumes of patient information, clinical guidelines, research literature, and historical medical records to provide evidence-based recommendations. Generative AI can identify patterns and relationships within complex datasets that may not be immediately apparent to clinicians, thereby supporting accurate diagnosis and treatment planning. By generating clinical insights, risk assessments, and treatment suggestions, AI-powered decision support systems help reduce diagnostic errors, improve patient safety, and facilitate informed decision-making. Furthermore, Generative AI enhances the efficiency of healthcare delivery by reducing the time required for information retrieval and clinical evaluation while ensuring that healthcare professionals remain informed about the latest medical evidence and best practices.

### B. *Medical Imaging*

Medical imaging has emerged as one of the most impactful areas for Generative AI adoption. Advanced generative models, including GANs and diffusion models, are capable of producing high-quality synthetic medical images and enhancing existing diagnostic images. These technologies assist radiologists and healthcare providers in detecting abnormalities, identifying disease patterns, and improving diagnostic accuracy. Generative AI supports image reconstruction, noise reduction, image segmentation, and enhancement of low-quality scans obtained from modalities such as Magnetic Resonance Imaging (MRI), Computed Tomography (CT), X-ray, and ultrasound. Additionally, synthetic image generation helps overcome limitations related to scarce medical imaging datasets by providing realistic training data for machine learning models. These capabilities contribute to earlier disease detection, improved diagnostic precision, and enhanced support for clinical decision-making.

### C. *Personalized Medicine*

Personalized medicine aims to provide tailored healthcare interventions based on an individual's genetic profile, medical history, lifestyle, and environmental factors. Generative AI plays a critical role in enabling precision healthcare by analyzing large-scale patient data and generating personalized treatment recommendations. Through the integration of genomic information, electronic health records, laboratory results, and clinical observations, AI models can predict disease susceptibility, treatment response, and potential health risks. Generative AI also supports drug discovery and optimization by identifying novel therapeutic compounds and predicting their effectiveness for specific patient populations. As a result, personalized medicine powered by GenAI facilitates more targeted therapies, reduces adverse drug reactions, and improves overall treatment outcomes while promoting a patient-centered approach to healthcare delivery.

### D. *Healthcare Communication and Documentation*

Healthcare professionals spend a considerable amount of time on administrative tasks, including clinical documentation, report generation, patient communication, and record management. Generative AI significantly reduces this burden by automating the creation and summarization of medical documents. Large Language Models (LLMs) can generate discharge summaries, clinical notes, referral letters, radiology reports, and patient education materials with high efficiency and consistency. Additionally, AI-powered virtual assistants and chatbots facilitate communication between healthcare providers and patients by answering routine inquiries, scheduling appointments, providing medication reminders, and delivering health-related information. Improved communication and documentation processes contribute to enhanced workflow efficiency, reduced clinician burnout, better information accessibility, and improved patient satisfaction.

### E. *Mental Health and Patient Engagement*

Mental healthcare has become an increasingly important area for Generative AI applications. AI-driven conversational agents, virtual therapists, and digital mental health platforms provide accessible and personalized psychological support to individuals experiencing mental health challenges. These systems can engage users through natural language interactions, monitor emotional states, detect early signs of mental distress, and recommend appropriate interventions. Generative AI also supports patient engagement by delivering personalized health information, treatment reminders, wellness coaching, and continuous health monitoring. Through interactive and patient-centered communication, AI technologies encourage greater adherence to treatment plans and promote active participation in healthcare management. Although human oversight remains essential, Generative AI offers significant potential for expanding mental healthcare accessibility, reducing service gaps, and improving overall patient engagement and well-being.

The clinical applications of Generative AI demonstrate its transformative potential across multiple healthcare domains. By supporting clinical decision-making, enhancing medical imaging, enabling personalized medicine, automating healthcare communication and documentation, and improving mental health services and patient engagement, GenAI contributes to more efficient, accurate, and patient-centered healthcare systems. These applications highlight the growing importance of foundation models in modern healthcare and their role in shaping the future of intelligent clinical practice.

## VI. ETHICAL CONSIDERATIONS AND PRIVACY CHALLENGES

The rapid integration of Generative Artificial Intelligence (GenAI) into healthcare has introduced numerous ethical, legal, and societal concerns that must be addressed to ensure responsible and trustworthy adoption. While GenAI offers substantial benefits in clinical decision support, medical imaging, personalized medicine, and patient engagement, its implementation also raises challenges related to bias, fairness, explainability, accountability, privacy, and security. Healthcare decisions directly affect patient safety and well-being, making it essential that AI systems operate transparently, fairly, and in compliance with ethical and regulatory standards. Addressing these challenges is critical for building trust among healthcare professionals, patients, policymakers, and other stakeholders. The following subsections examine the major ethical and privacy concerns associated with Generative AI in healthcare.

### A. Bias and Fairness

Bias and fairness represent some of the most significant ethical challenges in healthcare AI systems. Generative AI models are trained on large datasets that may contain historical, demographic, socioeconomic, or institutional biases. As a result, these models can unintentionally learn and reproduce discriminatory patterns, leading to unequal healthcare outcomes across different patient populations. For example, if training datasets underrepresent specific ethnic groups, age categories, or geographic regions, AI-generated recommendations may be less accurate for those populations. Such disparities can contribute to healthcare inequities and negatively affect vulnerable communities.

Ensuring fairness in Generative AI requires the development of representative and diverse training datasets, continuous bias monitoring, and rigorous model evaluation across multiple demographic groups. Researchers and healthcare organizations must implement fairness-aware algorithms and establish mechanisms for detecting and mitigating bias throughout the AI lifecycle. Furthermore, transparent reporting of model performance across diverse patient populations is necessary to ensure equitable healthcare delivery. By promoting fairness and inclusivity, healthcare providers can improve trust in AI systems and reduce the risk of discriminatory clinical outcomes.

### B. Explainability and Trustworthiness

The effectiveness of Generative AI in healthcare depends heavily on the ability of healthcare professionals and patients to understand and trust AI-generated recommendations. Many advanced foundation models, particularly large language models and deep neural networks, operate as "black-box" systems, where the reasoning behind generated outputs is often difficult to interpret. This lack of transparency creates challenges in clinical environments where decisions must be justified and supported by clear evidence. Healthcare professionals may be reluctant to rely on AI recommendations if they cannot understand how conclusions were reached or verify the underlying reasoning process. Explainable Artificial Intelligence (XAI) has emerged as an important approach for improving transparency and trustworthiness in healthcare AI systems. XAI techniques provide interpretable explanations of model predictions, helping clinicians understand the factors influencing AI-generated outcomes. In addition to explainability, trustworthiness requires reliability, robustness, accountability, and clinical validation. Generative AI systems must consistently produce accurate and evidence-based outputs while minimizing risks associated with hallucinations, misinformation, and erroneous recommendations. Establishing transparent governance frameworks, independent audits, and continuous performance monitoring can further strengthen trust in AI-assisted healthcare decision-making and support safe clinical adoption.

### C. Data Privacy and Security

Healthcare data are among the most sensitive forms of personal information, making privacy and security fundamental concerns in Generative AI applications. AI systems often require access to large volumes of patient records, medical images, genomic data, and clinical notes for training and deployment purposes. Unauthorized access, data breaches, and cyberattacks can compromise patient confidentiality and expose sensitive health information. Furthermore, generative models may inadvertently reveal identifiable patient information if appropriate safeguards are not implemented during model development and deployment.

To address these concerns, healthcare organizations must adopt robust privacy-preserving techniques and security mechanisms. Approaches such as federated learning, differential privacy, data anonymization, and secure multi-party computation enable AI systems to learn from distributed datasets while minimizing the exposure of sensitive information. Compliance with healthcare regulations and data protection frameworks, including HIPAA, GDPR, and other national healthcare privacy laws, is essential for ensuring responsible AI deployment. Additionally, strong cybersecurity measures, encryption protocols, access controls, and regular security audits are necessary to protect healthcare infrastructures from emerging threats. By prioritizing privacy and security, healthcare institutions can enhance patient trust while enabling the safe and ethical utilization of Generative AI technologies. Ethical considerations and privacy challenges play a crucial role in determining the success and sustainability of Generative AI in healthcare. Bias and fairness issues can lead to unequal healthcare outcomes, explainability and trustworthiness are essential for clinical acceptance, and robust privacy and security measures are necessary to protect sensitive patient information. Addressing these challenges through transparent governance, ethical AI practices, privacy-preserving technologies, and regulatory compliance will be fundamental to ensuring that Generative AI contributes to equitable, trustworthy, and patient-centered healthcare systems.

## VII. REGULATORY CHALLENGES AND GOVERNANCE FRAMEWORKS

The increasing adoption of Generative Artificial Intelligence (GenAI) in healthcare has created a pressing need for robust regulatory frameworks and governance mechanisms to ensure safe, ethical, and reliable deployment. While GenAI offers transformative opportunities in clinical decision support, diagnostics, personalized medicine, and healthcare management, its integration into healthcare systems raises concerns regarding accountability, transparency, patient safety, data protection, and legal responsibility. Existing healthcare regulations were primarily designed for conventional medical technologies and often struggle to accommodate the dynamic and adaptive nature of AI systems. Consequently, policymakers, healthcare organizations, technology developers, and regulatory agencies are actively working to establish governance structures that balance innovation with patient protection. Effective regulation and governance are essential to ensure that AI systems operate responsibly while maintaining public trust and compliance with healthcare standards.

### A. Regulatory Landscape

The regulatory landscape for Generative AI in healthcare is rapidly evolving as governments and international organizations seek to address the challenges posed by AI-driven technologies. Regulatory authorities such as the U.S. Food and Drug Administration (FDA), the European Medicines Agency (EMA), the European Union Artificial Intelligence Act (EU AI Act), and the World Health Organization (WHO) have begun developing guidelines for AI-based healthcare applications. These frameworks focus on ensuring patient safety, transparency, clinical effectiveness, and accountability while supporting technological innovation.

One of the primary regulatory challenges is the adaptive nature of Generative AI systems, which continuously evolve through training and updates. Traditional regulatory approaches are often based on static medical devices and may not adequately address AI models that change over time. Furthermore, issues such as AI-generated misinformation, algorithmic bias, data ownership, intellectual property rights, and cross-border data sharing create additional complexities for regulatory authorities. Variations in national healthcare laws and data protection regulations further complicate the development of globally harmonized AI standards. As a result, healthcare organizations must navigate an increasingly complex regulatory environment while ensuring compliance with evolving legal requirements and ethical principles.

### B. AI Governance Models

AI governance refers to the policies, processes, standards, and oversight mechanisms that guide the responsible development, deployment, and monitoring of artificial intelligence systems. In healthcare, governance frameworks are essential for ensuring that Generative AI technologies align with clinical, ethical, legal, and organizational objectives. Effective governance models establish clear accountability structures, define stakeholder responsibilities, and provide mechanisms for monitoring AI performance throughout its lifecycle. A comprehensive healthcare AI governance model typically includes several key components, including transparency, explainability, fairness, accountability, risk assessment, human oversight, and continuous monitoring. Governance frameworks also emphasize the importance of multidisciplinary collaboration among healthcare professionals, AI developers, ethicists, legal experts, and policymakers. Human-in-the-loop approaches are particularly important in healthcare, ensuring that clinicians retain ultimate responsibility for patient care decisions while utilizing AI-generated recommendations as supportive tools. Additionally, governance models promote ethical AI practices through regular auditing, bias assessment, model validation, and performance evaluation. These measures help maintain trust, enhance reliability, and ensure that AI systems operate within established healthcare standards and societal expectations.

### C. Compliance and Risk Management

Compliance and risk management are critical components of responsible Generative AI deployment in healthcare environments. Healthcare organizations must ensure that AI systems comply with applicable regulations, industry standards, and organizational policies throughout their development and operational lifecycle. Compliance requirements often include patient privacy protection, cybersecurity safeguards, informed consent procedures, clinical validation protocols, and documentation of AI system performance. Adherence to regulations such as the Health Insurance Portability and Accountability Act (HIPAA), General Data Protection Regulation (GDPR), and other healthcare-specific legal frameworks is essential for maintaining legal and ethical accountability. Risk management focuses on identifying, assessing, mitigating, and continuously monitoring potential threats associated with AI deployment. Common risks include algorithmic bias, inaccurate predictions, AI hallucinations, cybersecurity vulnerabilities, data breaches, system failures, and unintended clinical consequences. To address these risks, healthcare organizations should implement structured risk assessment frameworks that evaluate both technical and clinical risks before deployment. Continuous monitoring, model retraining, incident reporting mechanisms, and periodic audits are essential for detecting emerging issues and maintaining system reliability. Furthermore, organizations should establish contingency plans and human oversight procedures to ensure that critical healthcare decisions remain subject to professional judgment. By integrating compliance and risk management strategies into AI governance frameworks, healthcare institutions can promote safe, transparent, and sustainable adoption of Generative AI technologies.

Regulatory challenges and governance frameworks play a fundamental role in shaping the future of Generative AI in healthcare. The evolving regulatory landscape seeks to balance innovation with patient safety and ethical responsibility, while AI governance models provide structured oversight mechanisms to ensure accountability, fairness, and transparency. Compliance and risk management practices further support responsible AI adoption by addressing legal obligations, operational risks, and patient protection requirements. Together, these elements form the foundation for trustworthy, secure, and sustainable implementation of Generative AI within modern healthcare systems.

## VIII. FUTURE RESEARCH DIRECTIONS

The rapid evolution of Generative Artificial Intelligence (GenAI) presents significant opportunities for transforming healthcare; however, several research challenges remain unresolved. Future research should focus on developing more accurate, reliable, and clinically validated foundation models specifically designed for healthcare applications. Current models are often trained on general-purpose datasets and may lack sufficient domain-specific knowledge to address complex medical scenarios. Therefore, the creation of healthcare-specific large language models and multimodal foundation models trained on diverse and representative medical datasets will be essential for improving diagnostic accuracy, clinical reasoning, and patient care outcomes. Additionally, future studies should investigate methods for reducing hallucinations, enhancing factual consistency, and improving the robustness of AI-generated outputs in high-stakes clinical environments.

Another important research direction involves the advancement of explainable and trustworthy AI systems. As healthcare professionals increasingly rely on AI-generated recommendations, there is a growing need for models that provide transparent and interpretable explanations for their decisions. Future research should focus on integrating Explainable Artificial Intelligence (XAI) techniques into generative models to enhance clinician trust and facilitate regulatory approval. Furthermore, researchers should develop standardized evaluation frameworks for assessing explainability, fairness, reliability, and clinical effectiveness across different healthcare settings. Such frameworks would support objective comparisons among competing AI technologies and contribute to the establishment of industry-wide best practices.

Privacy-preserving AI technologies also represent a critical area for future investigation. The increasing reliance on large-scale healthcare datasets raises concerns regarding patient confidentiality, data security, and regulatory compliance. Future studies should explore advanced privacy-preserving approaches such as federated learning, differential privacy, homomorphic encryption, and secure multi-party computation to enable collaborative healthcare AI development without compromising sensitive patient information. Research should also focus on developing secure data-sharing mechanisms that facilitate cross-institutional collaboration while maintaining compliance with healthcare regulations and ethical standards.

The integration of Generative AI with emerging healthcare technologies offers another promising avenue for future research. Combining GenAI with Internet of Medical Things (IoMT) devices, wearable sensors, robotics, digital twins, blockchain, and telemedicine platforms could create highly intelligent and interconnected healthcare ecosystems. Such integration may enable real-time patient monitoring, predictive healthcare interventions, remote diagnostics, and personalized treatment planning.

Additionally, multimodal AI systems capable of simultaneously processing clinical notes, medical images, genomic data, laboratory reports, and wearable device information could significantly enhance comprehensive patient assessment and precision medicine initiatives.

Future research should also emphasize the development of comprehensive governance frameworks and regulatory standards for healthcare AI. As regulatory agencies worldwide continue to formulate AI-specific policies, researchers must contribute evidence-based recommendations for model validation, auditing, accountability, and risk management. Studies investigating legal liability, ethical responsibility, and regulatory harmonization across jurisdictions will be particularly important for facilitating global adoption of healthcare AI technologies. Moreover, longitudinal studies examining the long-term societal, economic, and clinical impacts of Generative AI are needed to support sustainable healthcare transformation.

Finally, greater attention should be given to education, workforce development, and human-AI collaboration. Healthcare professionals must be equipped with the knowledge and skills necessary to effectively utilize AI technologies while maintaining clinical judgment and patient-centered care. Future studies should investigate AI literacy programs, curriculum development strategies, and training frameworks that prepare healthcare practitioners for AI-assisted clinical environments. By addressing these research directions, the healthcare community can maximize the benefits of Generative AI while minimizing associated risks and ensuring responsible innovation.

## IX. CONCLUSION

Generative Artificial Intelligence (GenAI) has emerged as a transformative technology with the potential to revolutionize healthcare delivery, clinical decision-making, medical research, and patient engagement. The advancement of foundation models, including Large Language Models (LLMs), Generative Adversarial Networks (GANs), Diffusion Models, and Multimodal Foundation Models, has enabled healthcare systems to leverage vast amounts of medical data for diagnosis, prediction, communication, and personalized treatment planning. These technologies have demonstrated significant capabilities in supporting clinical decision support systems, medical imaging, synthetic data generation, healthcare documentation, mental health services, and precision medicine.

The literature reviewed in this study highlights the substantial benefits of Generative AI in improving healthcare efficiency, enhancing diagnostic accuracy, reducing administrative burdens, and promoting patient-centered care. At the same time, the findings reveal critical challenges related to algorithmic bias, explainability, trustworthiness, privacy protection, cybersecurity, and regulatory compliance. Addressing these challenges is essential to ensure the safe, ethical, and responsible deployment of AI technologies in healthcare environments where patient safety and data integrity are paramount.

The study also identified several research gaps, including limited real-world clinical validation, insufficient governance frameworks, inadequate standardization of evaluation methods, and the need for stronger privacy-preserving mechanisms. Furthermore, the evolving regulatory landscape necessitates continuous collaboration among researchers, healthcare providers, policymakers, and technology developers to establish comprehensive governance structures and compliance standards. Effective AI governance, risk management, and ethical oversight will be critical for maintaining trust and accountability in healthcare AI systems.

Looking forward, the future of Generative AI in healthcare will depend on advancements in trustworthy AI, multimodal intelligence, privacy-preserving technologies, and interdisciplinary collaboration. Continued investment in research, education, and policy development will enable healthcare organizations to harness the full potential of Generative AI while safeguarding patient rights and ensuring equitable healthcare outcomes. Ultimately, Generative AI represents not only a technological innovation but also a catalyst for the development of intelligent, efficient, and patient-centered healthcare systems capable of addressing the evolving challenges of modern medicine.

## REFERENCES

- [1] Zheng, J., Li, B., Li, H., & Lu, Y. (2026). Generative AI in healthcare: foundations, applications, challenges and future directions. *Journal of Management Analytics*, 1-29.
- [2] David-Olawade, A. C., Osunmakinde, A., Ayoola, F. I., Egbon, E., & Olawade, D. B. (2026). The role of generative AI in enhancing predictive modeling for cost-effectiveness analysis in healthcare. *Digital Engineering*, 100090.
- [3] Miracle, A. A., & Adaobi, C. C. (2025). The impact of generative AI on healthcare. In *Generative Artificial Intelligence (AI) Approaches for Industrial Applications* (pp. 169-188). Cham: Springer Nature Switzerland.
- [4] Fadul, N., Alaskar, M. F., Jillahi, K. B., & El-Khaled, D. B. (2025). Generative AI in Healthcare: An Analytical Review of Models, Clinical Applications, and Decision-Support Implications. *Journal of Future Artificial Intelligence and Technologies*, 2(4), 587-615.
- [5] Kanyal, Y., & Mehta, A. (2026). The role of Artificial Intelligence (AI) and Generative Artificial Intelligence (Gen AI) in digital healthcare. In *Revolutionizing Digital Healthcare Through Artificial Intelligence and Automation* (pp. 25-46). Academic Press.

- [6] Chakraborty, C., Bhattacharya, M., & Islam, M. A. (2026). Generative AI (GenAI) model for health forecasting: a new direction to predict the future risk of human disease. *International Journal of Surgery*, 112(2), 5363-5364.
- [7] Kumar, S., Talukder, M. B., & Kabir, F. (2026). Generative Artificial Intelligence in Healthcare. In *Hallucination-Aware AI for Truthful and Aligned Systems* (pp. 249-274). IGI Global Scientific Publishing.
- [8] Rathore, A. P. S., Malhotra, K., & Sharma, S. (2026). Generative artificial intelligence in medicine. In *Natural Language Processing for Healthcare* (pp. 79-108). Academic Press.
- [9] NAKAMURA, T., UCHIDA, W., YAMAMOTO, A., & AOKI, S. (2026). Generative AI in Medicine and Healthcare: A Comprehensive Review of Foundational Technologies, Clinical Applications, and Future Perspectives. *Juntendo Medical Journal*, 72(2), 176-188.
- [10] Choudhury, R. R., & Roy, P. (2026). Applications of artificial intelligence and generative artificial intelligence in digital healthcare ecosystem. In *Revolutionizing Digital Healthcare Through Artificial Intelligence and Automation* (pp. 65-82). Academic Press.
- [11] Kumar, D., Mishra, G., & Hemanth, J. D. (Eds.). (2026). *Robotics and Generative AI in Healthcare: A New Era of Innovation*. CRC Press.
- [12] Waseem, H. M., Islam, S. U., Matragkas, N., Epiphaniou, G., Arvanitis, T. N., & Maple, C. (2026). Review of generative AI for synthetic data generation: a healthcare perspective. *Artificial Intelligence Review*, 59(2), 55.
- [13] Vashishth, T. K., Sharma, V., Sharma, M. K., Sharma, K. K., & Chaudhary, S. (2026). Enhancing healthcare services with artificial intelligence and generative artificial intelligence technologies. In *Revolutionizing Digital Healthcare Through Artificial Intelligence and Automation* (pp. 101-122). Academic Press.
- [14] Alhur, A. A., & Al-Kahtani, N. K. (2026). Generative Artificial Intelligence In Health Informatics Education: A Comprehensive Bibliometric Assessment Of Cognitive Outcome Research (2019–2025). *International Journal of Advances in Signal and Image Sciences*, 895-915.
- [15] Tung, T., Hasnaeen, S. M. N., & Zhao, X. (2025). Ethical and practical challenges of generative AI in healthcare and proposed solutions: a survey. *Frontiers in Digital Health*, 7, 1692517.
- [16] Alsufi, M. I., Alsayed, S., Alsufi, M., & Qtaishat, F. A. (2026). Generative AI for Clinical Communication, Healthcare Worker Wellbeing, and Patient Care. In *Breakthroughs in Smart Nursing With Generative AI* (pp. 49-70). IGI Global Scientific Publishing.
- [17] Kumar, R., Ramamoorthy, S., Jain, V., Köse, U., & Tek, O. E. (Eds.). (2025). *Generative Artificial Intelligence in Healthcare: Current Practices and Future Development*. CRC Press.
- [18] Poojari, R. (2026). Privacy-Preserving Generative AI in Healthcare Systems Using Federated Learning Approaches. *International Journal of Data Science and IoT Management System*, 5(1), 78-88.
- [19] Kayira, A. B., Elyazori, H. R., Lybarger, K., Walter, F. M., Chelala, C., & Funston, G. (2026). Natural Language Processing of Clinical Notes for Cancer Research and Patient Care Prior to Widespread Adoption of Generative AI: Scoping Review. *JMIR AI*, 5(1), e73481.
- [20] Albaroudi, E., Mansouri, T., & Alameer, A. (2024, March). The intersection of generative AI and healthcare: Addressing challenges to enhance patient care. In *2024 Seventh International Women in Data Science Conference at Prince Sultan University (WiDS PSU)* (pp. 134-140). IEEE.
- [21] Oo, C. T. L., Wider, W., Pang, N. T. P., Koh, E. B. Y., Vasanthi, R. K., Thet, K. Z. Z., ... & Mahboob, K. (2026). The benefits and future potential of generative artificial intelligence (GAI) on mental health: a Delphi study. *International Journal of Qualitative Studies on Health and Well-being*, 21(1), 2621802.
- [22] Singh, R. K., & Sharma, R. K. (2026). Generative AI in Personalized Medicine: Advancing Patient Outcome Prediction. In *Generative AI in Modern Healthcare* (pp. 135-154). Bentham Science Publishers.
- [23] Pashang, B., Pashang, M., Majidi, V., & Khosravi, M. (2026). Clinical Decision Support Systems in the Era of Big Data and Generative AI: A Narrative Review. *International journal of Modern Achievement in Science, Engineering and Technology*, 3(1), 190-200.
- [24] Naqvi, W. M., Ganjoo, R., Rowe, M., Pashine, A. A., & Mishra, G. V. (2025). Critical thinking in the age of generative AI: implications for health sciences education. *Frontiers in Artificial Intelligence*, 8, 1571527.



10.22214/IJRASET



45.98



IMPACT FACTOR:  
7.129



IMPACT FACTOR:  
7.429



# INTERNATIONAL JOURNAL FOR RESEARCH

IN APPLIED SCIENCE & ENGINEERING TECHNOLOGY

Call : 08813907089  (24\*7 Support on Whatsapp)