



iJRASET

International Journal For Research in
Applied Science and Engineering Technology



INTERNATIONAL JOURNAL FOR RESEARCH

IN APPLIED SCIENCE & ENGINEERING TECHNOLOGY

Volume: 11 **Issue:** IX **Month of publication:** September 2023

DOI: <https://doi.org/10.22214/ijraset.2023.55651>

www.ijraset.com

Call: ☎ 08813907089

E-mail ID: ijraset@gmail.com

Hydrochemistry and Groundwater Quality Assessment for Drinking and Irrigation Purposes in Kakarveni River Basin, Vikarabad District, Telangana, India

Ramulu. M¹, I. Panduranga Reddy²

Department of Geology, University College of Science, Osmania University, Hyderabad

Abstract: This study aims to assess the hydrochemistry and groundwater quality in the Kakarveni river basin in Vikarabad district, Telangana, India. Groundwater is a vital natural resource for human, agricultural, and ecological needs. Understanding hydrochemistry and groundwater quality is essential for identifying potential contaminants for selecting water treatment and agricultural management practices. The study will analyse hydro-chemical parameters such as pH, electrical conductivity, total dissolved solids, and major ions, and collect water samples from different locations to assess permeability index, Kelly's index, magnesium hazard, sodium percentage, residual sodium carbonate, or Eaton's index. The research methodology involves field sampling and laboratory analysis to ensure accurate and reliable results. The study area is about 192 sq. km and includes agricultural fields, forests, and human settlements. The geology and hydrology of the area are crucial for sustainable development and effective water resource management. The study found significant variations in measured parameters between pre-monsoon and post-monsoon seasons, with slightly acidic pH levels and higher electrical conductivity and total dissolved solids during the post-monsoon season. The study analyses water samples during the pre-monsoon and post-monsoon periods and compares them with the WHO's drinking water quality standards. The study computes the findings and arrives at the suitability of groundwater for irrigation.

Keys words: Hydrochemistry, Kakarveni, Ground water, Water quality, Irrigation suitability, SAR, MH, KI

I. INTRODUCTION

Groundwater refers to the water that is found beneath the Earth's surface in the pores and crevices of soil, rock, and other geological formations. It is one of the Earth's most important natural resources, serving as a vital source of fresh water for various human, agricultural, and ecological needs. Its quality is crucial for community health and agricultural productivity. This study aims to assess the hydrochemistry and groundwater quality in the Kakarveni river basin of Vikarabad district, Telangana, India. The availability of safe drinking water and sustainable irrigation practices are vital for local communities and the region's agricultural productivity. Understanding hydrochemistry and groundwater quality is essential for identifying potential contaminants and formulating appropriate strategies for water treatment and agricultural management. This comprehensive study will provide valuable insights to make informed decisions regarding water resource management in the region. The study will analyse hydro-chemical parameters such as pH, electrical conductivity, total dissolved solids, and major ions and collect water samples from different locations to assess the permeability index, Kelly's index, magnesium hazard, sodium percentage, residual sodium carbonate or Eaton's index. The research methodology will involve field sampling and laboratory analysis to ensure accurate and reliable results.

A. Study Area

The present study area is about 192 sq. km, and belongs to the Kakarveni river basin of R. Kanga, a tributary of R. Bhima, which is a tributary of R. Tungabhadra. lies between latitude 17°12'30" N to 17°20'30"N and longitude 77°44'00"E to 77°50'00"E. A variety of rock types belonging to the Peninsular Gneissic Complex (Archaean) Schistose rocks of Dharwar Supergroup (Archaean-Proterozoic age), granitoids and younger acidic and basaltic intrusive (Lower Proterozoic), Deccan Traps (Upper Cretaceous lower Eocene) and laterite (Pleistocene) are exposed in the district. The Peninsular Gneissic Complex occurring as enclaves and rest within the younger granitoids is seen in the southern part of the district mainly Bomraspet and Parigi.

The Karkarveni River basin is an important hydrological system in the region, providing water for irrigation and domestic use. The study area also includes agricultural fields, forests, and human settlements, making it a diverse and dynamic landscape. Understanding the geology and hydrology of this area is crucial for sustainable development and effective water resource management. The granites are predominantly of pink and grey varieties which are coarse pegmatite and epidote. In the study area, the dolerite dykes are very common. Groundwater occurs along the weathered and fractured zones of basaltic nature, granites, and gneisses. The depth of the weathered zone ranges from 18 feet to 60 feet. The topography extensively influences the groundwater regime.

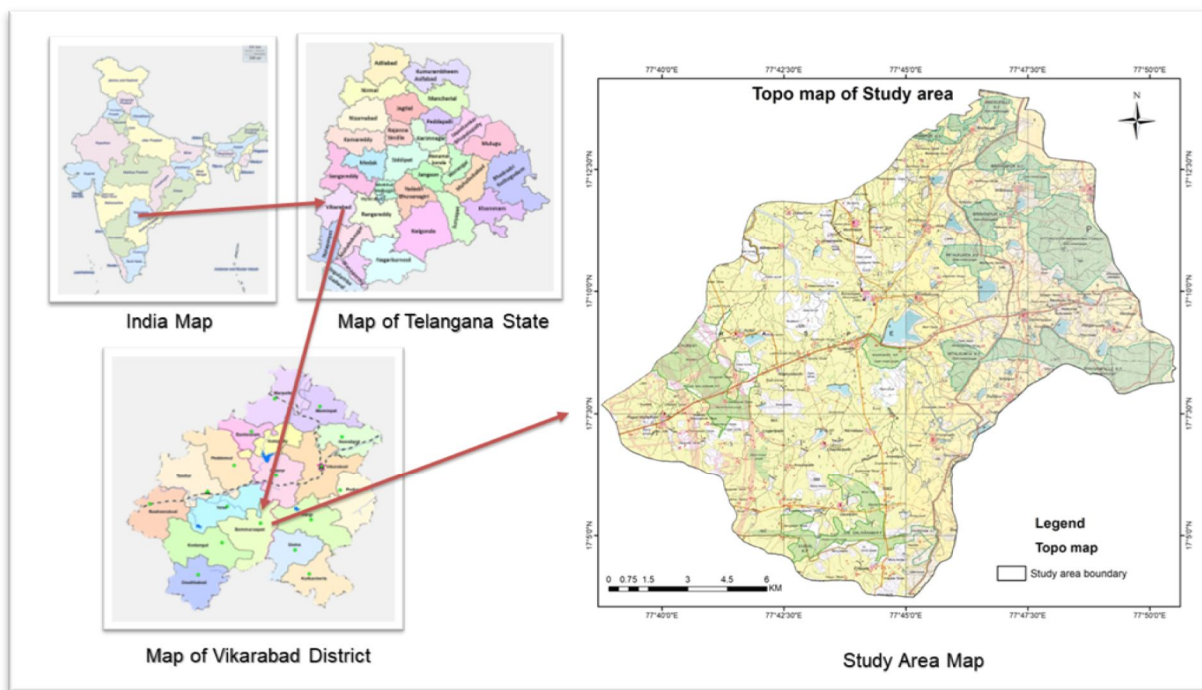


Figure. 1 showing Location map of the study area

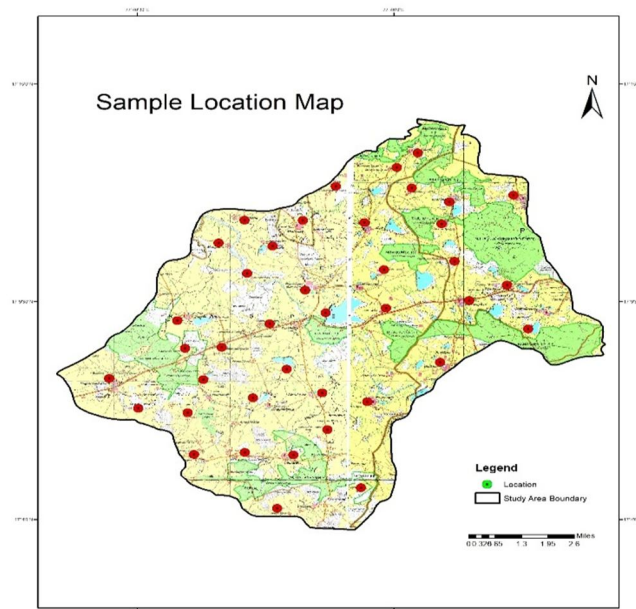


Figure 2: Location map of samples

II. METHODOLOGY

A total of forty samples were collected from borewells, dug wells, and surface water tanks in the Kakarveni River basin during pre-monsoon and post-monsoon seasons. The samples were analysed for parameters like pH, electrical conductivity, total dissolved solids, total hardness, calcium, magnesium, sodium, potassium, chlorides, carbonates, bi-carbonates, sulphates, nitrates, and fluoride using standard methods.

The data was graphically represented and interpreted using Aquachem and Microsoft Excel software. The SAR, Na%, PI, KI, RSC, and MH were computed.

The analysis of water samples from various sources in the Kakarveni River basin revealed significant variations in the measured parameters between the pre and post-monsoon seasons.

The pH levels were found to be slightly acidic in both seasons, while electrical conductivity and total dissolved solids were higher during the post-monsoon season.

Calcium and magnesium levels were observed to be higher during the pre-monsoon season, whereas sodium and potassium levels were higher during the post-monsoon season. The presence of chlorides, carbonates, bi-carbonates, sulphates, nitrates, and fluoride was also detected in varying concentrations. These results were further analyzed using Aqua-chem and Microsoft Excel software to compute the SAR, Na%, PI, KI, RSC, and MH.

III. RESULTS AND DISCUSSION

The analytical data of various water samples for different parameters during the pre-monsoon and post-monsoon with their average is presented in the table and compared with the drinking water quality standards of WHO (2011).

A. Suitability for Drinking Water

- 1) *pH and EC*: The pH of the groundwater samples varies from 7.38 to 8.28 in the pre-monsoon and 6.20 to 7.95 in the post-monsoon. The pH values of all samples in the study area are within the permissible range. In the present study area, Ec ranges from 293 to 2474 uS/cm in pre-monsoon and 504 to 2752 uS/cm in post-monsoon. 43% of samples in the pre-monsoon and 87% in the post-monsoon were found to deviate from the standards. Based on the comparison with WHO's drinking water quality standards, it was found that the pH levels of the water samples were within the acceptable range for drinking water. However, the electrical conductivity (Ec) levels exceeded the recommended limits in some samples, indicating a higher mineral content. This could potentially affect the taste and overall suitability of the water for drinking purposes. Further analysis and treatment may be necessary to ensure the water meets the desired drinking water quality standards.
- 2) *Total dissolved solids*: of pre-monsoon varies from 183 mg/L to 1583 mg/L and in post-monsoon from 288 mg/L to 823 mg/L. The obtained results of TDS denoted 22.5% of the samples in pre-monsoon and 57.5% were deviating from the BIS standards.
- 3) *Calcium*: According to BIS standards, the Ca concentration level for the drinking water is 75 mg/L. The Concentration of calcium ions in the study area vary from 24 to 240 mg/L and 24 to 262 mg/L in the pre-monsoon and post-monsoon respectively. The obtained results indicate that 30% of the samples in pre-monsoon and 60% in post-monsoon were deviating from the standards.
- 4) *Magnesium*: The Mg concentration varies from 9.72 mg/L to 77.79 mg/L in pre-monsoon and 11 mg/L to 100 mg/L in post-monsoon. No sample deviates from the standards.
- 5) *Sodium*: The Na ion concentration in the area of interest varies from 25 mg/L to 285 mg/L in pre-monsoon and 20 mg/L to 220 mg/L in post-monsoon. Only one sample i.e. GP Borehole of Tunkkimetla village, Bomraspete mandal is deviating from standards in pre and post-monsoon.
- 6) *Bi-carbonates*: The concentration of bi-carbonates ranges from 70 mg/L to 500 mg/L pre-monsoon and 85 mg/L to 476 mg/L. Only one sample location, Manthapuram village of Bomraspet mandal is deviating from standard in pre-monsoon and none of the samples are deviating in post-monsoon.
- 7) *Chloride*: The concentration of Cl in the samples ranges from 20 mg/L to 410 mg/L in pre-monsoon and 0 mg/L to 402 mg/L in post-monsoon. 5% of the samples were deviating from standards in pre and post-monsoon. Tunkkimetla and Regadi-mailram samples were found to deviate.

Table 1(A) Analysis of the water samples of Pre-monsoon and their comparison with WHO (2019) standards, along with the Kelly's Index,

Magnesium Hardness, Permeability Index, Residual Sodium Carbonate, Percent Sodium and Sodium Absorption Ratio																					
Sl. No	Sample name	pH	EC uS/cm	TDS mg/L	CO3 mg/L	HCO3 mg/L	Cl mg/L	F mg/L	NO3 mg/L	SO4 mg/L	Na mg/L	K mg/L	Ca mg/L	Mg mg/L	T.H mg/L	KI meq/L	MH meq/L	PI meq/L	RSC meq/L	%Na meq/L	SAR meq/L
1	S1	7.76	1290	826	0	280	160	0.75	46	134	91	53	88	49	420	0.665	35.59	57.27	-3.86	51.30	1.72
2	S2	7.79	429	275	0	110	70	0.79	6	29	40	3	24	24	160	0.828	50.32	58.49	-1.42	46.98	0.51
3	S3	8.26	696	445	0	280	40	1.27	0.1	7	87	1	40	15	160	1.594	26.72	73.40	1.37	61.64	0.65
4	S4	7.70	1090	698	0	220	200	0.99	13	43	74	2	72	53	400	0.590	42.62	45.20	-4.45	37.86	1.90
5	S5	8.11	1024	655	0	200	150	1.75	47	66	84	3	72	39	340	0.760	35.07	51.22	-3.56	44.09	1.63
6	S6	7.92	1296	829	0	250	170	1.73	53	91	102	1	80	53	420	0.761	40.07	50.21	-4.36	43.52	1.84
7	S7	7.91	447	286	0	130	50	0.78	6	16	38	2.6	32	15	140	0.818	31.31	59.71	-0.68	46.65	0.69
8	S8	7.75	2474	1583	0	460	380	0.68	52	194	285	140	64	73	460	2.081	53.26	79.44	-1.74	75.62	0.85
9	S9	7.84	989	633	0	290	90	1.07	3	46	80	1	72	29	300	0.793	28.83	53.79	-1.28	44.43	1.62
10	S10	7.94	591	378	0	180	50	0.90	9	36	54	2	32	24	180	0.959	43.17	61.90	-0.68	49.99	0.64
11	S11	7.60	1361	871	0	300	190	1.07	35	117	105	1	104	58	500	0.649	35.94	46.12	-5.14	39.68	2.62
12	S12	7.85	293	188	0	70	30	1.42	21	21	25	1	24	10	100	0.741	28.83	57.71	-0.86	43.76	0.55
13	S13	8.11	984	630	0	180	120	1.14	65	82	58	5	80	39	360	0.488	32.71	41.92	-4.29	34.53	2.32
14	S14	7.71	851	545	0	250	80	0.74	8	61	62	0.3	48	44	300	0.676	47.69	50.69	-1.95	40.42	1.19
15	S15	8.10	990	634	0	180	120	0.52	42	116	58	1	80	44	380	0.469	35.36	39.62	-4.70	32.28	2.48
16	S16	7.72	1255	803	0	300	140	0.72	39	105	104	4	72	58	420	0.799	44.76	52.54	-3.54	45.27	1.59
17	S17	7.62	1357	868	0	190	180	0.67	120	125	79	2	120	49	500	0.469	28.83	38.05	-6.94	32.53	3.69
18	S18	7.43	2223	1423	0	200	410	0.72	225	169	164	5	240	44	780	0.578	15.42	40.41	-12.37	37.29	6.44
19	S19	7.86	1086	695	0	320	90	1.17	11	79	102	1	64	39	320	0.991	37.80	58.70	-1.20	50.01	1.28
20	S20	8.11	802	513	0	160	80	0.88	29	124	67	1	56	34	280	0.749	37.80	51.31	-3.01	43.35	1.29
21	S21	8.05	597	382	0	200	30	2.50	17	65	50	6	32	34	220	0.757	51.54	57.39	-1.16	45.78	0.70
22	S22	7.74	398	255	0	100	40	0.77	18	20	43	3	24	10	100	1.275	28.83	70.37	-0.37	57.88	0.41
23	S23	8.28	1368	876	0	500	110	1.31	37	43	119	6	64	78	480	0.839	54.86	55.22	-1.49	46.83	1.37
24	S24	7.72	1259	806	0	270	140	1.08	45	128	101	2	56	68	420	0.817	54.86	52.64	-4.05	45.41	1.23
25	S25	7.95	883	565	0	280	60	1.05	7	67	87	1	48	34	260	1.065	41.49	61.60	-0.65	51.77	0.93
26	S26	7.88	528	338	0	180	40	0.35	2	31	34	1	40	24	200	0.525	37.80	48.79	-1.08	35.29	1.13
27	S27	7.60	1586	1015	0	240	220	1.23	124	168	156	2	80	73	500	1.020	47.69	55.81	-6.14	50.83	1.57
28	S28	8.01	1187	760	0	280	150	0.62	14	98	88	5	104	39	420	0.616	27.22	46.43	-3.85	39.33	2.64
29	S29	8.15	1320	845	0	280	160	0.66	78	140	94	27	80	68	480	0.635	45.97	51.13	-5.08	44.91	1.78
30	S30	8.00	793	508	0	300	30	1.72	17	37	75	2	32	39	240	1.054	54.86	63.77	0.08	52.06	0.61
31	S31	7.77	983	629	0	230	110	1.51	58	69	78	1	48	53	340	0.769	52.70	52.19	-3.09	43.79	1.10
32	S32	7.93	758	485	0	270	40	2.22	6	45	77	1	32	34	220	1.161	51.54	65.51	-0.01	54.09	0.59
33	S33	7.66	742	475	0	270	40	0.87	5	57	33	2	48	49	320	0.342	50.32	38.96	-2.03	26.45	1.81
34	S34	7.38	2238	1432	0	290	230	0.47	182	311	136	14	208	63	780	0.502	23.31	39.73	-10.91	35.69	5.83
35	S35	7.76	1098	703	0	240	110	1.51	74	97	72	4	96	39	400	0.536	28.83	43.36	-4.11	36.01	2.67
36	S36	7.80	872	558	0	250	100	1.06	2	53	80	1	40	44	280	0.955	52.24	58.72	-1.55	49.12	0.81
37	S37	8.11	792	507	0	260	60	1.18	31	42	65	1	32	49	280	0.807	60.31	56.04	-1.39	45.06	0.71
38	S38	8.02	798	511	0	240	60	1.38	15	46	50	1	64	29	280	0.537	31.31	46.01	-1.70	35.24	1.82
39	S39	7.83	899	575	0	310	40	1.28	31	55	55	0.3	40	58	340	0.559	59.33	47.45	-1.78	35.99	1.11
40	S40	7.64	553	354	0	170	20	0.96	3	71	63	2	24	19	140	1.450	44.76	71.90	-0.03	59.85	0.40
41	Min	7.38	293.00	187.52	0.00	70.00	20.00	0.35	0.12	7.00	25.00	0.26	24.00	9.72	99.98	0.342	15.42	38.05	-12.37	26.45	0.40
42	MaX	8.28	2474.00	1583.36	0.00	500.00	410.00	2.50	224.90	311.00	285.00	139.70	240.00	77.79	779.93	2.081	60.31	79.44	1.37	75.62	6.44
43	WHO	6.5-8.5	1500	500	-	500	250	1.5	45	250	200	12	75	50	-						

Table 1 Showing the Analysis of the pre monsoon water samples in the study area

Table 1(A) Analysis of the water samples of Post-monsoon and their comparison with WHO (2019) standards, along with the Kelly's Index, Magnesium Hardness, Permeability Index, Residual Sodium Carbonate, Percent Sodium and Sodium Absorption Ratio

Sl. No	Sample name	pH	EC uS/cm	TDS mg/L	CO3 mg/L	HCO3 mg/L	Cl mg/L	F mg/L	NO3 mg/L	SO4 mg/L	Na mg/L	K mg/L	Ca mg/L	Mg mg/L	T.H mg/L	KI meq/L	MH meq/L	PI meq/L	RSC meq/L	%Na meq/L	SAR meq/L
1	S1	6.90	1820	986	0	265	171	0.65	75	180	121	58	102	65	501	0.72	38.92	56.4	-6.17	51.73	1.87
2	S2	7.20	950	506	0	145	82	0.70	12	81	66	5	38	20	250	1.14	34.48	64.2	-1.19	54.86	1.73
3	S3	7.50	1200	726	0	255	56	1.10	10	12	102	3	56	32	245	1.16	36.36	62.7	-1.29	54.40	2.17
4	S4	6.91	2220	1086	0	180	198	1.00	45	28	74	1	89	58	555	0.50	39.46	39.8	-6.33	33.78	1.22
5	S5	7.80	2340	826	0	228	165	1.55	76	20	125	4	72	62	250	0.93	46.27	54.7	-5.03	48.95	2.16
6	S6	7.10	2650	801	0	330	201	1.55	68	150	152	2.1	105	82	640	0.81	43.85	50.5	-6.67	45.18	2.22
7	S7	6.20	830	568	0	156	78	0.70	15	65	65	5	65	21	280	0.76	24.42	52.9	-2.44	44.87	1.40
8	S8	6.65	2025	1823	0	450	402	0.62	108	252	220	151	88	92	320	1.22	51.11	71.2	-4.69	67.33	3.28
9	S9	7.20	1920	984	0	320	108	1.00	21	84	115	2.3	107	51	454	0.73	32.28	49.1	-4.35	42.61	1.83
10	S10	7.10	1240	672	0	198	78	1.00	15	78	50	4.1	82	24	210	0.47	22.64	42.6	-2.85	33.79	0.97
11	S11	6.90	2015	1056	0	324	210	0.98	48	152	134	2.6	98	81	625	0.75	45.25	49.0	-6.34	43.28	2.00
12	S12	6.85	504	426	0	85	0	1.10	75	34	52	2.0	45	28	225	0.71	38.36	49.8	-3.19	42.52	1.22
13	S13	7.80	1545	854	0	165	102	1.13	104	94	87	7.2	114	54	421	0.52	32.14	40.8	-7.50	35.93	1.34
14	S14	7.32	1460	689	0	283	92	0.66	45	86	95	1.0	78	55	280	0.71	41.35	49.3	-3.84	41.92	1.65
15	S15	7.76	1650	886	0	162	132	0.80	79	134	82	1.0	98	62	450	0.51	38.75	39.4	-7.41	34.16	1.30
16	S16	6.73	2165	1025	0	295	165	1.10	64	128	120	6.2	83	72	480	0.77	46.45	51.0	-5.31	44.88	1.12
17	S17	7.80	2461	954	0	204	198	0.55	116	156	68	4.3	138	84	620	0.31	37.84	29.4	-10.56	24.57	0.91
18	S18	6.86	2752	1624	0	224	390	0.69	208	202	188	8.0	262	76	910	0.56	22.49	39.5	-15.76	36.70	2.04
19	S19	7.23	1860	1027	0	356	96	1.50	33	115	151	2.5	78	64	502	1.06	45.07	58.3	-3.40	51.95	2.53
20	S20	7.90	1145	725	0	200	93	0.72	45	165	82	1.5	81	51	440	0.62	38.64	45.3	-5.02	38.75	1.43
21	S21	7.56	1158	545	0	175	42	2.22	34	84	71	8.1	65	48	410	0.63	42.48	48.1	-4.38	41.18	1.34
22	S22	6.75	820	486	0	120	15	0.67	28	55	62	6.4	24	16	150	1.55	40.00	73.2	-0.57	63.10	2.13
23	S23	7.89	2296	1027	0	476	112	1.26	47	40	142	8.2	90	80	602	0.84	47.06	53.7	-3.36	46.91	2.18
24	S24	6.52	1965	726	0	302	165	0.98	58	152	101	3.5	87	74	580	0.63	45.96	45.9	-5.57	39.36	1.59
25	S25	6.90	1587	845	0	324	73	0.89	12	82	129	2.0	92	48	350	0.92	34.29	55.0	-3.29	48.34	2.18
26	S26	7.10	1050	657	0	168	48	0.28	16	48	55	2.4	76	50	342	0.44	39.68	38.4	-5.21	31.30	0.98
27	S27	7.80	1352	1145	0	264	238	1.40	120	152	192	8.0	116	100	720	0.89	46.30	52.0	-9.81	48.08	2.61
28	S28	7.89	1879	876	0	308	165	0.58	10	128	134	7.2	106	72	610	0.75	40.45	49.7	-6.25	44.24	2.01
29	S29	7.65	2258	987	0	326	175	0.60	105	188	140	21.5	98	92	628	0.74	48.42	51.1	-7.22	45.95	2.03
30	S30	7.75	1764	725	0	276	10	1.62	45	65	124	4.1	48	75	425	1.01	60.98	57.6	-4.13	51.02	2.23
31	S31	6.90	1860	873	0	225	128	1.46	67	92	115	3.2	38	88	515	0.91	69.84	54.5	-5.54	48.40	2.05
32	S32	6.80	1547	654	0	298	66	2.01	13	75	104	2.1	52	45	201	1.07	46.39	60.7	-1.46	52.24	2.11
33	S33	7.80	1420	426	0	302	68	0.69	24	88	20	1.8	66	71	448	0.15	51.82	24.7	-4.27	13.73	0.34
34	S34	7.10	2547	1226	0	327	248	0.38	165	263	120	10.0	228	52	910	0.43	18.57	36.1	-10.37	31.71	1.43
35	S35	7.23	908	876	0	286	135	1.47	125	112	105	7.2	118	51	650	0.62	30.18	45.9	-5.46	39.90	1.61
36	S36	6.65	1824	765	0	271	115	1.00	32	92	126	1.0	34	62	365	1.31	64.58	64.3	-2.42	56.95	2.57
37	S37	7.89	1278	501	0	304	81	1.02	56	28	108	3.8	44	42	401	1.26	48.84	65.3	-0.72	56.52	1.25
38	S38	7.50	1498	679	0	224	73	1.20	34	86	83	2.5	82	21	385	0.81	20.39	53.3	-2.18	45.36	1.63
39	S39	7.20	1176	687	0	286	48	1.16	60	95	86	1.0	65	62	465	0.68	48.82	48.6	-3.73	40.65	1.52
40	S40	7.95	1048	288	0	187	0	0.82	25	65	102	3.6	45	11	280	1.82	19.64	73.8	-0.10	65.35	2.72
41	Min	6.20	504.00	288.00	0.00	85.00	0.00	0.28	10.00	12.00	20.00	1.00	24.00	11.00	150.00	0.15	18.57	24.7	-15.76	13.73	0.34
42	Max	7.95	2752.00	1823.00	0.00	476.00	402.00	2.22	208.00	263.00	220.00	151.00	262.00	100.00	910.00	1.82	69.84	73.8	-0.10	67.33	3.28
43	WHO	6.5-8.5	1500	500	-	500	250	1.5	45	250	200	12	75	50	-						

Table 2 Showing the Analysis of the post monsoon water samples in the study area

- 8) **Fluoride** : F ions concentration ranges from 0 to 2.5 mg/L in the pre-monsoon 0.28 mg/L to 2.22 mg/L in the post-monsoon. 12% samples in the pre-monsoon for deviating from the standards. One sample i. e., Madaipalli Thanda bore hole is deviating from the standards in the post-monsoon.
- 9) **Nitrates**: The concentration of nitrates ranges from 10 mg/L to 208 mg/L in the post-monsoon. 0.12 mg/L to 220 mg/L in the pre-monsoon. 30% samples in the pre-monsoon for deviating from the standards. 47.5% of the samples were deviating from the standards in the post-monsoon.
- 10) **Sulphates**: The concentration of sulphates ranges between 7 mg/L to 311 mg/L in the pre-monsoon and 12 mg/L to 260 mg/L in the post-monsoon. One sample of the Handpump borehole at mattakodur village Parigi mandal in pre monsoon is deviating from the standards, and 5% of the samples of post monsoon were deviating from the standards.
- 11) **Potassium**: The K concentration ranges from 0.26 to 139.70 mg/L in the pre monsoon 1.00 mg/L to 151 mg/L in the post-monsoon. The WHO limit is 12mg/L in drinking water. 10% of the samples were deviating from the standards in the pre-monsoon and 7.5% in the post-monsoon.

B. Hydrogeochemical Classification and Hydrogeochemical Facies

The Piper (1944) diagrams are very useful to determine the relationship of different dissolved constituents and to classify the water based on its chemical characteristics. According to Wasim et.al (2014) and Kumar Leal (2015), the geochemical evolution of groundwater can be understood by the Piper diagram: The diagram consists of three separate fields i.e. two lower triangular fields and a central diamond shape field. In the lower left side triangle the major cations Ca, Mg, Na, and K in epm % values are plotted, whereas, the major anions like HCO_3 , Cl and SO_4 in epm % are plotted on the lower right side triangle. Then the positions of the plots in two triangular fields are projected onto a quadrilateral or central diamond-shaped field. Based on the positions of the plots in sub-areas of the diamond-shaped field different types of groundwater can be identified.

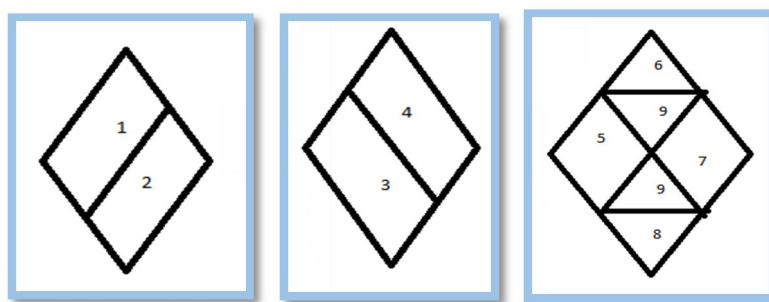


Fig 3 showing the Divisions & Fields of Piper's trilinear diagram

Pipers Classification Table	
No.	Description
1	Alkaline earths (Ca+Mg) Exceeds alkalis (Na+K)
2	Alkalis exceeds alkaline earths
3	Weak acids (CO_3+HCO_3) exceed Strong acids (SO_4+Cl).
4	Strong acids exceeds weak acids
5	Magnesium Bicarbonate type (carbonate hardness or secondary alkalinity exceeds 50 % i.e., chemical properties of the water is dominated by alkaline earths and weak acids.
6	Calcium-Chloride Type (Non-carbonate hardness or secondary salinity exceeds 50 %)
7	Sodium-Chloride Type (Non-carbonate alkali or primary salinity exceeds 50 % i.e., chemical properties are dominated by alkalis and strong acids – ocean water
8	Sodium-Bicarbonate Type (Carbonate alkalis or primary alkalinity exceeds 50 %)
9	Mixed type (No one cation-anion pair exceeds 50%)

Figure 4 and figure 5 gives the Piper classification of groundwater for pre and post-monsoon seasons respectively. During the pre-monsoon season alkaline earth exceeds alkalies in the groundwater is 95%, 5% of groundwater shows alkalies exceed alkaline earth, 47.5 % is weak acids exceeds strong acids, 52.5% is strong acids exceed weak acids, 42.5% of magnesium-bicarbonate type, 2.5% sodium-chloride type zero % sodium-bicarbonate and 55% no one cation-anion pair exceeds 50% type and given in Table 3. During the post-monsoon season alkaline earth exceeds alkalies in the groundwater is 92.5 % , 7.5% of groundwater shows alkalies exceed alkaline earth, 37.5% is weak acids exceeds strong acids, 62.5% is strong acids exceeds weak acids, 32.5% magnesium-bicarbonate type, 5% calcium-chloride type, 2.5% sodium-chloride type and zero% sodium bicarbonate type and 60% no one cation-anion pair exceeds 50% type and given in the Table 3.

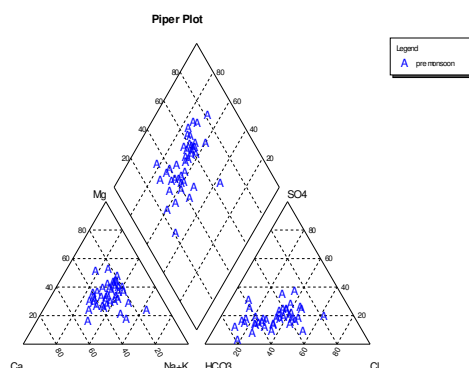


Fig. 3- showing Piper Plot of pre-monsoon

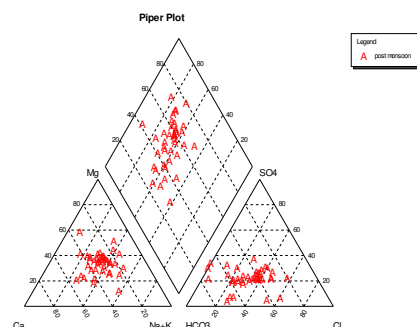


Fig. 4- showing Piper Plot of post-monsoon

Area	Characteristics Corresponding Sub-divisions of Diamond-shaped Field	Samples category			
		Pre-monsoon		Post-monsoon	
		No. of Samples	%	No. of Samples	%
1	Alkaline earths (Ca+Mg) exceed alkalises (Na+K)	38	95	37	92.5
2	Alkalies exceed alkaline earths	02	05	03	7.5
3	Weak acids (CO ₃ + HCO ₃) excessed Strong acids (SO ₄ + Cl)	19	47.5	15	37.5
4	Strong acids exceed weak acids	21	52.5	25	62.5
5	Magnesium Bicarbonate type (carbonate hardness of secondary alkalinity exceeds 50% i.e., chemical properties of the water is dominated by alkaline earths and weak acids.	17	42.5	13	32.5
6	Calcium- Chloride Type (non-carbonate hardness or secondary salinity exceeds 50%)	-	-	02	5
7	Sodium-Chloride Type (non-carbonate alkali or primary salinity exceeds 50% i.e., chemical properties are dominated by alkalies and strong acids -ocean water	01	2.5	01	2.5
8	Sodium- Bicarbonate Type (Carbonate alkalies or primary alkalinity exceeds 50%)	-	-	-	-
9	Mixed type (No cation-anion pair exceeds 50%)	22	55	24	60

Table 3 Showing the Classification of the Groundwater Samples by Piper Diagram.

- 1) *Suitability for Irrigation*: As per Ayers and Westcot (1985), electrical conductivity (EC), permeability index (PI), Kelley index (KI), Magnesium hazard (MH), percentage sodium (%Na) and sodium adsorption ratio (SAR) are useful in assessing the suitability of water for irrigation uses. Kelley's ratio, magnesium ratio, permeability index and residual sodium carbonate, per cent sodium, and sodium adsorption ratio are calculated for all the samples during both seasons and we presented them in table 1 and table 2.

Kelley's Index (KI): It is the level of sodium measured against calcium and magnesium. The KI can be determined by the flowing formula

$$KI = Na / (Ca^{2+} + Mg^{2+})$$

and was used for finding out the suitability of water for agriculture Kelley (1946) and Paliwal (1967, 1972). As per Kelly's index, groundwater and surface water from the dry area are categorized into suitable if KR is <1, marginal if KR is 1-2 and unsuitable if KR is >2.

In the study, KI values vary from 0.34 to 2.08 with an average of 0.817meq/L in pre-monsoon and 0.15 to 1.82 with an average of 0.81meq/L in post-monsoon. In the present area, 80% of the samples from pre-monsoon and 75% from post-monsoon are falling in suitable, 17.5% from pre-monsoon and 25% from post-monsoon seasons are marginal and 0.25% from pre-monsoon are unsuitable categories for irrigation purposes.

- 2) *Magnesium Hazard (MH) or Magnesium Absorption Ratio (MAR)*: Generally, alkaline earths are in an equilibrium state in groundwater. If soils have more alkaline earths, they reduce crop yield. This hazard is expressed in terms of Magnesium Hazard (MH), which is computed by the equation

$$MH = Mg / (Ca + Mg) \times 100$$

In natural waters, Mg in equilibrium state will adversely affect crop yields (Nagaraju et al., 2006). The magnesium hazard (MAR) of irrigation water is proposed by Szabolcs and Darab (1964) and redefined by Raghunath (1987). The MAR values exceeding 50 is considered harmful and unsuitable for irrigation use. The Magnesium hazard values in the study area vary from 15.42% to 60.31% with an average of 40.79% in the pre-monsoon and 18.57% to 69.84% with an average of 40.52% in post-monsoon. In the present study, 30 % of samples of the pre-monsoon and 12.5% of the post-monsoon samples were found with MH values >50% which makes them unsuitable for irrigation.

- 3) *Permeability Index*: Permeability Index (PI) values are also useful to find out the suitability of groundwater for irrigation purposes since long-term use of irrigation water can affect soil permeability. It is influenced by the Na, Ca and HCO_3^- contents of the soil. The PI can be expressed by equation.

$$PI = 100 \times (Na + \sqrt{HCO_3^-}) / (Ca^{2+} + Mg^{2+} + Na)$$

Doneen (1964) has assessed the suitability of water for irrigation, based on the permeability index. According to this classification, Class I and II possess maximum permeability >75% are classified good for irrigation while third category (Class III) having 25% maximum permeability are unsuitable for irrigation purpose (Nagaraju et al., 2006). The Permeability Index values vary from 38.05% to 79.44% with an average of 53.76% in pre-monsoon and 24.67% to 73.81% with an average of 51.19% in post-monsoon periods. According to PI values, only one sample fit in class I, 97.5% of samples fit in class II and Nil samples in class III in pre-monsoon season and Nil in class I and 97.5% fit into class II and 2.5% of samples fit into the class III of post-monsoon indicating 97% of the samples during pre-monsoon and 97% in post-monsoon seasons are marginally suitable for irrigation.

- 4) *Residual Sodium Carbonate or Eaton's Index (RSC)*: Eaton (1950) has calculated residual sodium carbonate (RSC) using the following formula

$$RSC = (CO_3 + HCO_3) - (Ca + Mg).$$

If the residual sodium carbonate is less than 1.25 meq/l in water is probably safe, 1.25 to 2.5 meq/l is marginal and unsuitable for irrigation with more than 2.5 meq/l (USDA, 1954).

Based on this 97.5% of the groundwater samples fall in safe, 2.5% in marginal and 0% or nil in unsuitable in a pre-monsoon season whereas 100%, samples of post-monsoon fall in safe, none of the samples fall under the marginal and unsuitable category for irrigation in the present area.

5) **Percent Sodium (Na %):** The concentration of sodium is important in classifying the groundwater for irrigation because it reacts with soil to reduce its permeability. Sodium-saturated soils namely alkaline soils formed on account as predominant anion or saline soils formed due to excess presence of sodium with either chloride or sulphate as predominant anion. Wilcox (1955) used percent sodium and specific conductance in evaluating irrigation waters using the Wilcox diagram as shown in the figure. The percent sodium is obtained from the below equation.

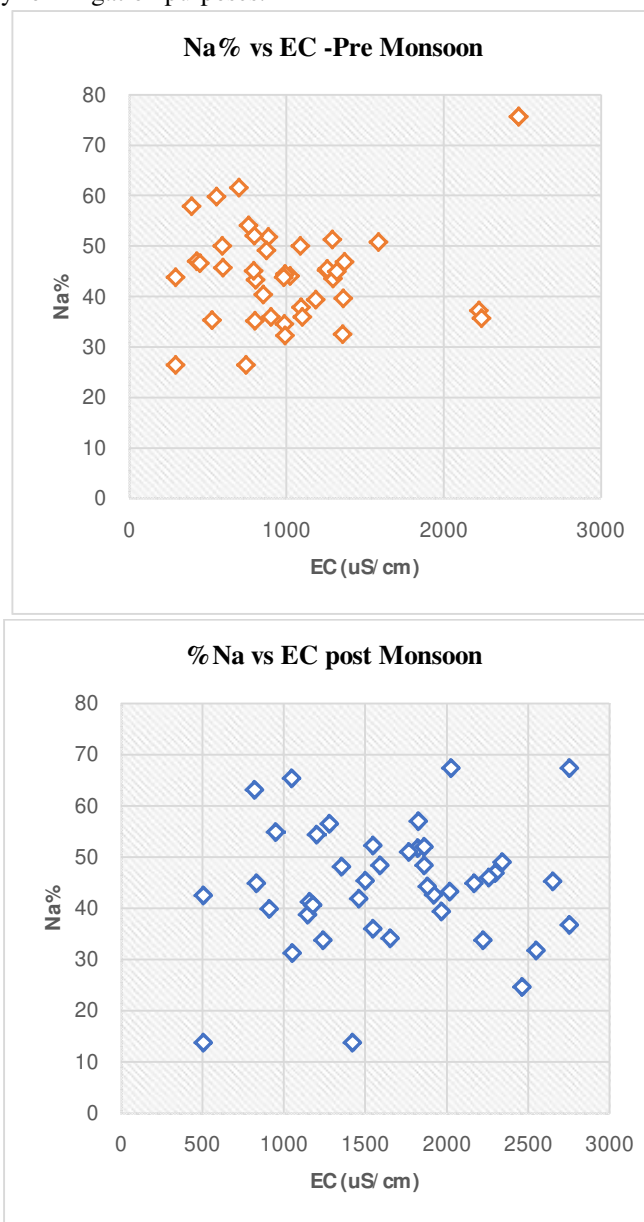
$$\%Na = \frac{Na+K}{Ca + Mg + Na + K} \times 100$$

where all the values are expressed in meq/L,

The sodium percentage values vary from 26.25 to 75.62 meq/L with an average of 44.81 meq/L in pre-monsoon and 13.73 to 67.33 meq/L with an average of 44.56 meq/L in the post-monsoon season.

The classification of water is based on %Na as excellent (< 20%), good (20–40%), permissible (40–60%), doubtful (60–80%) and unsuitable (> 80%) (Khodapanah et al. 2009).

Based on this classification, around 30% of the samples were good 65% of the samples fell in the permissible category and 5% of the samples were a doubtful category in pre-monsoon season. In post-monsoon season, 2.5% of the groundwater samples are excellent category, 27.5% of the samples fall in the category good and 62.5% of samples fall under the permissible category, 7.5% of the samples are doubtful category for irrigation purposes.



- 6) **Sodium Adsorption Ratio (SAR):** SAR is one of the important parameters used to determine the suitability of groundwater for irrigation. SAR value is calculated by the following formula, where all ion concentrations are in meq/L (Richards 1954, Wilcox 1955).

$$SAR = \frac{Na}{\sqrt{[(Ca+Mg)/2]}}$$

The sodium or alkali hazard is expressed in terms of SAR. In the present area of investigation, sodium adsorption in the pre-monsoon season ranges from 0.66 to 4.86 me/L with an average of 1.60 me/L. Based on the SAR, all the pre-monsoon and post-monsoon samples falling in the excellent class are good to permissible categories with little or low sodium hazard.

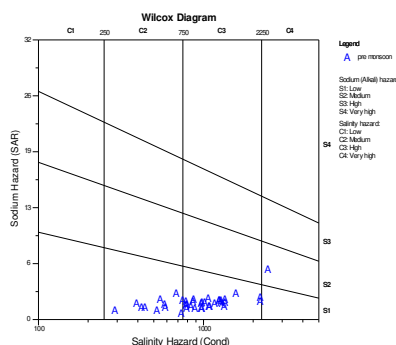


Fig. 6 showing USSL diagram pre-monsoon

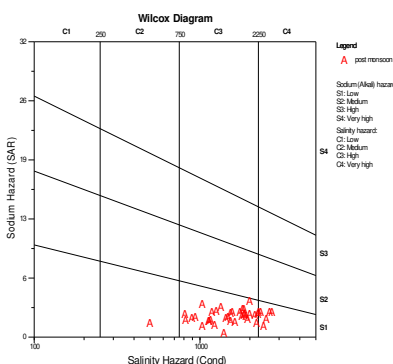


Fig. 7 showing USSL diagram post-monsoon

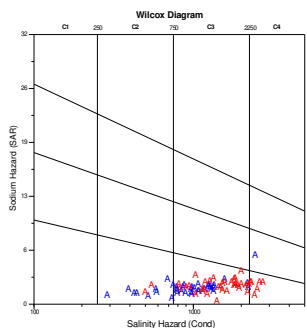


Fig. 8 showing suitability of ground water for irrigation in Wilcox diagram (Wilcox, 1955)

The US Salinity Laboratory (USSL 1954) proposed a diagram (Fig.6 and 7) for studying the suitability of groundwater for irrigation purposes based on electrical conductivity and sodium adsorption ratio. Water used for irrigation can be classified into four types- C1, C2, C3 and C4 based on salinity hazard and S1, S2, S3 and S4 based on sodium hazard. Figure 8 shows the plot of groundwater samples grouped on the above basis. In this diagram, irrigation water is classified as low (EC 250 μ S/cm), medium (EC-250-750 μ S/cm), high (EC-750- 2250 μ S/cm) and very high (EC-2250-5000 μ S/cm) salinity classes.

It is observed that the majority (70%) fall under the high salinity-low sodium waters C3S1 class, 0% fall under C4S1 class indicating very high salinity and low sodium waters, 27.5% indicate medium salinity and low sodium water C2S1 class and zero% of the sample fall under C3S2 class indicating high salinity-medium sodium waters in pre-monsoon season. During the post-monsoon season, the groundwater samples fall in the 80% C3S1 category indicating high salinity-low sodium waters, 15% in C4S1 with very high salinity and low sodium, 2.5% in C2S1 with medium salinity and low sodium water, zero% in C4S2 very high salinity and medium sodium and 2.5% C3S2 high salinity-medium sodium waters (Table: 4). Electrical conductivity affects the total salt concentration and soil salinity and thereby affecting the yield of the crop and its tolerance accordingly. Since most of the waters in the study area fall in the low sodium group, these waters require adequate drainage and special management for salinity control, and plants having good salt tolerance need to be selected for cultivation

Wilcox plots for classification					
Pre-Monsoon			Post-Monsoon		
C3S1	28/40	70%	C3S1	32/40	80%
C2S1	11/40	27.5%	C2S1	1/40	2.5%
C3S2	-	-	C3S2	1/40	2.5%
C4S2	1/40	2.5%	C4S1	6/40	15%

Table:4 showing Wilcox plots for classification of water samples during pre-monsoon and post monsoon.

IV. CONCLUSIONS

Hydrogeochemical studies are carried out in the Kakarveni river Basin to find out the suitability of water for drinking and agriculture. Water samples are collected from open wells, bore wells and also in the stream The pH levels of the water samples were within the acceptable range, but some samples exceeded the recommended limits, indicating higher mineral content. Further analysis and treatment may be necessary to ensure the water meets the desired drinking water quality standards. Total dissolved solids (TDS) showed 22.5% of samples deviating from the BIS standards, while calcium concentrations were higher than the recommended 75 mg/L. Magnesium concentrations were also higher than the standards, with no deviations.

The study also found bi-carbonates, chloride, fluoride, nitrates, sulphates, and potassium concentrations to be deviating from the standards. Only one sample, Manthapuram village, deviated from the standards in the pre-monsoon period. Fluoride concentrations ranged from 0 to 2.5 mg/L in the pre-monsoon period to 0.28 mg/L to 2.22 mg/L in the post-monsoon period. Sulphates concentrations ranged from 7 mg/L to 260 mg/L in the pre-monsoon period to 260 mg/L in the post-monsoon period. Potassium concentrations ranged from 0.26 to 139.70 mg/L in the pre-monsoon period to 1.00 mg/L to 151 mg/L in the post-monsoon period.

The Piper diagrams are useful for determining the relationship of different dissolved constituents and classifying water based on its chemical characteristics. During the pre-monsoon season, alkaline earth exceeds alkalies in the groundwater by 95%, while during the post-monsoon season, alkaline earth exceeds alkalies by 92.5%. Suitability for irrigation is assessed using various factors such as electrical conductivity, permeability index, Kelley index, Magnesium hazard, percentage sodium, and sodium adsorption ratio. Kelley's index measures the level of sodium measured against calcium and magnesium, while Magnesium hazard measures the amount of alkaline earths in groundwater. In the present study, 80% of pre-monsoon and 75% of post-monsoon samples fall in suitable categories, while 17.5% and 25% are marginal and 0.25% are unsuitable categories for irrigation purposes.

Residual Sodium Carbonate (RSC) is calculated using Eaton's Index, which indicates that 97.5% of groundwater samples fall in safe category, 2.5% in marginal, and 0% or NIL in unsuitable category. Sodium Adsorption Ratio (SAR) is another important parameter used to determine the suitability of groundwater for irrigation. In the present area, 30% of samples were good, 65% in permissible, and 5% in doubtful categories. Studying the suitability of groundwater for irrigation purposes based on electrical conductivity and sodium adsorption ratio. Most of the samples fall in the high salinity-low sodium waters C3S1 class, indicating adequate drainage and special management for salinity control. Plants with good salt tolerance need to be selected for cultivation in these low sodium waters.

V. ACKNOWLEDGEMENTS

I am Very grateful to the Department of geology, University College of Science, Osmania University for all the facilities it provided me for completion of this work, I am grateful to my colleagues for helping me out at various stages of my research.

REFERENCES

- [1] Abdulhussein, Firas. (2018). Hydrochemical Assessment of Groundwater of Dibdibba Aquifer in Al-Zubair Area, Basra, South of Iraq and its Suitability for Irrigation Purposes. *Iraqi Journal of Science*. 59. 135-143.
- [2] APHA (1995) Standard Methods for the Examination of Water and Wastewater. 19th Edition, American Public Health Association Inc., New York.
- [3] BIS, 1983. Standards for water for drinking and other purposes. Bureau of Indian standards publication. New Delhi.
- [4] Doneen, L.D., 1962. The Influence of Crop and Soil on Percolating Water. *Proc. 1961. Biennial Conference on Ground Water Recharge*, 156-163.
- [5] Kelley, W.P., 1940: Permissible composition and concentration of irrigation water. *Proc. Amer. Soc. Civ. Engin.* 66: 607-613.
- [6] Kumar, SK., Logeshkumaran, A., Magesh, N.S. et al. Hydro-geochemistry and application of water quality index (WQI) for groundwater quality assessment, Anna Nagar, part of Chennai City, Tamil Nadu, India. *Appl Water Sci* 5, 335–343 (2015). <https://doi.org/10.1007/s13201-014-0196-4>
- [7] Nagaraju, A., Suresh, S., Killham, K. and Hudson-Edwards, K., 2006. Hydrogeochemistry of Waters of Mangampeta Barite Mining Area, Cuddapah Basin, Andhra Pradesh, India. *Turkish Journal of Engineering and Environment Sciences*, 30: 203-219.
- [8] Naseem, S., Hamz, S. and Bashir, E. 2010. Groundwater Geochemistry of Winder Agricultural Farms, Balochistan, Pakistan and Assessment for Irrigation Water Quality, *European Water*, 31: 21-32
- [9] Piper, A.M., 1953. A Graphic Procedure in the Geochemical Interpretation of Water Analysis. Washington D.C., USGS.
- [10] Ramesh, K. & Lakshmanan, Elango. (2006). Groundwater quality assessment in Tondiar Basin. 26. 497-504.
- [11] Ramkumar, T., Venkatramanan, S., Mary, I.A., Tamilselvi M. and Ramesh, G., 2010. Hydrogeochemical Quality of Groundwater in Vedaraniyam Town, TamilNadu, India. *Research Journal of Environmental and Earth Sciences* 2 (1): 44-48.
- [12] Richards LA. Sous la direction U.S.S.L.S. (United State Salinity Laboratory Staff) ; Diagnosis and improvement of saline and alkali soils. US Department of Agriculture, Handbook 60, US. Gov. Print. Office, Washington DC (USA); 1954, p. 160.
- [13] USSL, 1954. Diagnosis and improvement of saline and alkali soils. US DA Hand Book, 60: 147.
- [14] World Health Organization. (2011). Guidelines for drinking-water quality, 4th ed. World Health Organization. <https://apps.who.int/iris/handle/10665/44584>
- [15] Wilcox, L.V. (1955) Classification and Use of Irrigation Water. US Department of Agriculture, Circular 969, Washington DC.



10.22214/IJRASET



45.98



IMPACT FACTOR:
7.129



IMPACT FACTOR:
7.429



INTERNATIONAL JOURNAL FOR RESEARCH

IN APPLIED SCIENCE & ENGINEERING TECHNOLOGY

Call : 08813907089  (24*7 Support on Whatsapp)