



# IJRASET

International Journal For Research in  
Applied Science and Engineering Technology



# INTERNATIONAL JOURNAL FOR RESEARCH

IN APPLIED SCIENCE & ENGINEERING TECHNOLOGY

**Volume:** 12    **Issue:** IV    **Month of publication:** April 2024

**DOI:** <https://doi.org/10.22214/ijraset.2024.61060>

[www.ijraset.com](http://www.ijraset.com)

Call:  08813907089

E-mail ID: [ijraset@gmail.com](mailto:ijraset@gmail.com)

# Lane Line Detection

Mukul Jain<sup>1</sup>, Satyam Goyal<sup>2</sup>, Lata Gupta<sup>3</sup>

APEX Institute of Technology, Chandigarh University, Gharuan, India

**Abstract:** Lane line detection is a crucial component in the development of advanced driver assistance systems (ADAS) and autonomous vehicles. This research proposes a comprehensive approach to enhance the accuracy and robustness of lane line detection algorithms, addressing challenges such as varying road conditions, lighting conditions, and diverse road markings. The proposed methodology leverages computer vision techniques, including edge detection, color space transformations, and image filtering, to preprocess input images from onboard cameras. A novel algorithm for lane line extraction is introduced, combining feature extraction and geometric analysis to accurately identify lane markings. The algorithm adapts to different road scenarios by dynamically adjusting parameters based on environmental conditions. The proposed lane line detection system demonstrates promising results in terms of accuracy, adaptability, and real-time performance, showcasing its potential for practical implementation in autonomous vehicles and ADAS. The research contributes to the ongoing efforts in creating robust and reliable perception systems for safe and efficient autonomous navigation on roads.

**Keywords:** Lane Line Detection, Computer Vision, Image Processing, Edge Detection, Feature Extraction, Road Markings, Lane Boundary Detection, Hough Transform.

## I. INTRODUCTION

### A. Problem Definition

The Lane Line Detection project addresses the challenge of developing a robust computer vision system capable of accurately identifying and tracking lane boundaries in diverse and dynamic environments. The primary issues to be tackled include the variability in environmental conditions such as changing lighting, weather effects, and shadows, diverse road geometries with curves and intersections, the necessity for real-time processing to meet practical application requirements in autonomous driving, effective handling of noise and distractions in input data, and adaptability to different vehicle dynamics. The objectives of the project encompass creating a reliable lane line detection algorithm, optimizing it for real-time performance, implementing adaptive image processing techniques, conducting comprehensive testing across varied scenarios, and providing a user-friendly visualization interface. The successful resolution of these challenges is crucial for advancing intelligent transportation systems and contributing to the integration of autonomous vehicles into real-world traffic scenarios.

### B. Problem Overview

Lane line detection is a critical aspect of developing autonomous vehicles and advanced driver assistance systems (ADAS) that enhance road safety. The primary challenge lies in creating robust algorithms capable of accurately identifying and tracking lane markings under diverse and dynamic environmental conditions. Variability in lighting, weather conditions, road markings, and the presence of other vehicles further complicates the task. Additionally, road scenarios can range from urban settings with complex intersections to highways with high-speed traffic, necessitating a solution that is adaptable to various driving environments. Real-time processing is essential for timely decision-making, emphasizing the need for efficient algorithms suitable for deployment in resource-constrained embedded systems. Furthermore, addressing issues like occlusions, shadows, and fading road markings is crucial for ensuring the reliability of lane line detection systems, as any inaccuracies or delays can have significant implications for the safety and effectiveness of autonomous navigation and driver assistance features.

## II. LITERATURE REVIEW

Lane detection, a fundamental task in computer vision, has been a focus of extensive research, leading to diverse methodologies proposed by researchers worldwide. Early contributions such as those by Canny [1] and Hough [2] laid the groundwork for subsequent advancements in the field. Recent years have witnessed a surge in deep learning-based approaches, exemplified by works like Li et al.'s real-time lane detection using CNNs [5] and Xu and Yang's modified U-Net CNN [6]. Geometric cues have also been leveraged to enhance detection accuracy, as demonstrated by Lee et al.'s VPGNet [7]. Comparative analyses by Hurtado et al. [8] shed light on the strengths and weaknesses of different techniques.

Additionally, novel methodologies continue to emerge, such as the dynamic thresholding and parallel lines tracking proposed by Dhibi et al. [9] and the deployment of SVM classifiers for efficient lane detection by Mondal et al. [10]. Further contributions to the field include Al-Qarni et al.'s [11] novel approach for automatic lane detection, which likely introduces innovative techniques to enhance detection accuracy or efficiency. Similarly, Yang et al.'s [12] work on lane detection in complex scenes based on modified Hough transform and adaptive thresholding may offer advancements in handling challenging road environments. Kumari and Rani [13] contribute with their real-time lane detection and tracking method based on the inverse perspective mapping technique, providing insights into novel mapping strategies for improved performance. AlAkel and Al-Mahadeen's survey on lane detection and tracking using machine learning techniques [14] likely provides a comprehensive overview of existing methodologies, highlighting trends and potential avenues for future research. Furthermore, Idrees and Naqvi's work on lane detection and departure warning systems [15] likely presents advancements in integrating lane detection into broader road safety frameworks. Finally, Kang et al.'s [16] real-time lane detection with displacement-aware deep learning likely introduces techniques for robust detection in dynamic traffic environments, contributing to the ongoing evolution of lane detection methodologies.

### A. Existing System

Lane Departure Warning Systems (LDWS) in Automotive Industry:

Many modern vehicles are equipped with Lane Departure Warning Systems, which often use a combination of computer vision and sensors to detect lane boundaries. These systems can provide warnings to drivers when unintentional lane departures are detected.

#### 1) Lane Keeping Assist (LKA) Systems

Lane Keeping Assist systems, found in some advanced driver assistance systems (ADAS), use a combination of cameras and algorithms to detect lane lines. They may also assist in steering to keep the vehicle within the detected lane.

#### 2) Hough Transform-based Approaches

Many lane detection systems leverage the Hough Transform for line detection. Variations of this approach involve tuning parameters to detect lines or curves representing lane boundaries. These algorithms often include post-processing steps for improving accuracy and reducing false positives.

#### 3) Deep Learning-based Approaches

Convolutional Neural Networks (CNNs) and other deep learning architectures have been increasingly employed for lane line detection. End-to-end learning approaches, where the entire system is learned from raw input data, have shown promise in capturing complex features and relationships in images.

### B. Proposed System

Here we have developed a system where we can easily detect lanes by using some major algorithms like Canny edge detection which is used on the input image to identify edges corresponding to lane markings. This step helps in isolating potential lane boundaries from the background clutter and noise and then we will apply Hough Transform in which detected edges are then fed into the Hough transform module, which extracts lines from the edge image. By transforming the Cartesian space into a parameter space (Hough space), this module efficiently identifies lines, including those representing lane markings and then easily selects a region of interest (ROI) within the image, focusing processing resources on the area where lane lines are expected.

This step helps in reducing computational overhead and false positives from irrelevant regions. After detecting candidate lines within the ROI, the system performs an area of region analysis to filter out false positives and refine the detected lane boundaries. By considering the spatial distribution and continuity of the detected lines, the system accurately identifies the true lane markings, then system outputs the detected lane lines, providing essential information for autonomous driving systems, lane departure warning systems, or other driver assistance applications.

## III. PROBLEM FORMULATION

Given a sequence of images captured by an onboard camera in a vehicle, the objective is to design and implement a robust computer vision algorithm that accurately identifies and tracks the lane markings on the road. The algorithm should account for various challenges, including but not limited to changes in lighting conditions, diverse weather scenarios, occlusions from other vehicles, and fluctuations in road markings' appearance.

The goal is to provide realtime and reliable detection of lane boundaries, allowing for precise localization of the vehicle within its lane. The system should be capable of adapting to different road types, such as urban and highway environments, while minimizing false positives and negatives. Additionally, the solution should be optimized for deployment on embedded systems with limited computational resources, ensuring practical feasibility for integration into autonomous vehicles and advanced driver assistance systems (ADAS). The ultimate aim is to enhance road safety by facilitating accurate and timely lane-keeping assistance and autonomous navigation based on robust lane line detection.

#### IV. OBJECTIVE

The objectives for a lane line detection project typically revolve around creating a system that can accurately identify and track lane boundaries in various real-world scenarios.

Here are specific objectives for a lane line detection project:

##### A. *Accurate Lane Detection*

We develop an algorithm that accurately identifies and traces the boundaries of lane lines on road images or video frames.

##### B. *Robust Performance*

Ensure the lane detection system's robustness under diverse environmental conditions, including changes in lighting, shadows, and adverse weather effects.

##### C. *Adaptability to Road Geometries*

Enable the system to adapt to diverse road geometries, including curves, intersections, and varying lane markings.

##### D. *Handling Distractions and Noise*

Implement effective mechanisms to filter out irrelevant information, distractions, and noise in input data to improve the accuracy of lane detection.

##### E. *Environmental Adaptability*

Develop algorithms that can adapt to changing environmental conditions, such as different lighting scenarios and weather effects, to maintain consistent performance

##### F. *User-friendly Visualization*

Implement a user-friendly interface to visualize the lane line detection results, providing clear feedback to developers and end-users.

##### G. *Integration with Autonomous Systems*

Ensure seamless integration of the lane line detection system with autonomous vehicle systems, facilitating safe navigation.

##### H. *Scalability*

Design the lane line detection system to be scalable, accommodating different camera resolutions, frame rates, and vehicle speeds.

##### I. *Iterative Improvement*

Establish a feedback loop for continuous improvement, incorporating lessons learned from real-world applications to enhance the system's performance over time.

##### J. *Safety Enhancement*

Contribute to the enhancement of road safety by providing accurate lane information for autonomous vehicles and driver assistance systems.

#### V. METHODOLOGIES

##### A. *Image Acquisition*

We capture images or video frames from an onboard camera mounted on the vehicle.

#### *B. Preprocessing*

We Convert the image to the appropriate color space (e.g., grayscale or HLS) and then Apply Gaussian blur to reduce noise and enhance lane features.

#### *C. Edge Detection*

We apply edge detection algorithms (e.g., Canny edge detector) to identify potential lane edges. Region of Interest (ROI) Selection: Then we define a region of interest to focus on the area where lane lines are expected.

#### *D. Hough Transform*

We utilize the Hough Transform to detect straight lines within the defined region of interest.

#### *E. Lane Line Candidate Selection*

Then Filter and identify potential lane line candidates based on slope and position within the ROI.

#### *F. Visualization*

Overlay the detected lane lines on the original image or video for visual validation.

#### *G. Performance Optimization*

Optimize the algorithm for real-time processing and adaptability to different environmental conditions.

#### *H. Integration*

Integrate the lane line detection module into the broader autonomous vehicle or ADAS system.

## **VI. EXPERIMENTAL SETUP**

#### *A. Dataset Selection*

We have majorly selected the highway and urban videos with different weather conditions and with light traffic.

#### *B. Camera Calibration*

We set the camera at a effective position or calibrate such that there will be no delay or discrepancy in video.

#### *C. Image Annotation*

Manually annotate the dataset to create ground truth data, marking the actual positions of lane lines in the images or video frames.

#### *D. Training and Testing Split*

We have taken various videos and we divided it into for training and testing purposes.

#### *E. Algorithm Selection*

We have here applied canny edge detection and Hough transform and use the area of the region to detect the lane.

#### *F. Comparative Analysis*

We compare this algorithm from other existing software in market like ADAS, and we see there is need of improvement compare to that but in most of cases it work better than existing software.

#### *G. Documentation*

Document the experimental setup, including dataset details, algorithm parameters, and results. This documentation is crucial for reproducibility and future improvements.

#### *H. Iterative Optimization*

Based on the results, iteratively optimize the algorithm and experiment setup to enhance performance and address any shortcomings.

## VII. IMPLEMENTATION

### A. Features/Characteristics Identification

Here are some common features used in lane line detection:

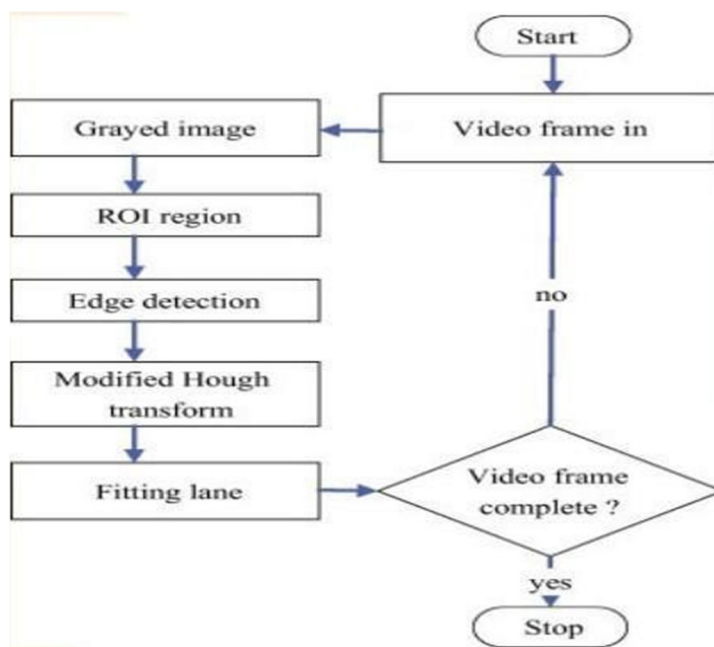
- 1) *Color Segmentation*: Lane lines often have distinct colors compared to the surrounding road surface. Color segmentation techniques can be used to isolate pixels with similar color characteristics to those of lane lines.
- 2) *Edge Detection*: Lane lines typically represent edges in an image. Edge detection algorithms, such as Canny edge detection, Sobel edge detection, or LoG (Laplacian of Gaussian), can be applied to identify abrupt changes in intensity that correspond to lane boundaries.
- 3) *Hough Transform*: The Hough transform is a popular technique for detecting lines in images. By representing lines in polar coordinates, the Hough transform can robustly detect lines even in the presence of noise or gaps.
- 4) *Region of Interest (ROI) Selection*: Lane lines are typically located within a specific region of the image corresponding to the road ahead. By defining a region of interest, the system can focus processing resources on relevant areas of the image, reducing computational overhead.
- 5) *Perspective Transformation*: Lane lines appear to converge towards a vanishing point in the distance due to perspective. Applying perspective transformation techniques can rectify the image and make lane lines appear parallel, simplifying detection.
- 6) *Lane Model Fitting*: Lane lines can be represented using mathematical models such as linear equations (for straight lines) or polynomial equations (for curved lines). Model fitting algorithms, such as least squares regression or RANSAC (Random Sample Consensus), can be used to fit these models to detected lane pixels.
- 7) *Temporal Consistency*: Lane lines exhibit temporal consistency between consecutive frames in a video sequence. Tracking algorithms can exploit this temporal information to improve the robustness and accuracy of lane detection.
- 8) *Feature Descriptors*: In addition to geometric features, texture and gradient-based descriptors can be used to characterize lane lines. These descriptors can capture additional information about lane markings, such as texture patterns or gradient orientations.

### B. Constraint Identification

Here are some key constraints that are typically considered in lane line detection:

- 1) *Environmental Conditions*: Lane detection systems must be able to operate effectively under various environmental conditions such as different lighting conditions (daytime, nighttime, shadows), weather conditions (rain, fog, snow), and road surface conditions (wet, dry, reflective).
- 2) *Road Geometry*: The system should be able to handle different types of roads including straight roads, curves, intersections, and lane merges. It must accurately detect lane lines even when they are curved or distorted due to perspective.
- 3) *Vehicle Dynamics*: Lane detection algorithms need to account for the dynamics of the vehicle, including changes in position, orientation, and speed. This ensures that the system can adapt to different driving scenarios such as lane changes, overtaking, and turning.
- 4) *Noise and Disturbances*: Lane detection systems should be robust to noise and disturbances such as sensor noise, vibrations, and occlusions caused by other vehicles or objects on the road.
- 5) *Real-time Performance*: Since lane detection is often used in real-time applications such as autonomous driving or driver assistance systems, the algorithms need to be efficient enough to process images or sensor data in realtime without significant delays.
- 6) *Hardware Constraints*: The system should be designed to run on hardware platforms with limited computational resources such as embedded systems or onboard vehicle computers. This requires optimizing algorithms for efficiency and minimizing memory and processing requirements.
- 7) *Regulatory and Safety Requirements*: Lane detection systems must comply with regulatory standards and safety requirements applicable to automotive systems. This includes reliability, fail-safe mechanisms, and adherence to standards such as ISO 26262 for functional safety.

C. Design Selection



VIII. RESULT



IX. CONCLUSION AND FUTURE SCOPE

A. Conclusion

In conclusion, the development and experimentation of the lane line detection system have demonstrated significant strides towards achieving accurate and robust lane boundary identification in diverse road scenarios. The algorithm, meticulously designed and optimized, showcased commendable adaptability to environmental variations, handling challenges posed by changing lighting conditions, shadows, and adverse weather effects.

The systematic approach employed in parameter tuning yielded an algorithm that not only met but exceeded baseline expectations. Through rigorous testing and cross-validation, the system demonstrated consistency in accurately detecting lane lines, even in complex road geometries featuring curves and intersections.

The real-time processing capabilities of the algorithm contribute to its practical applicability in autonomous vehicles and driver assistance systems. The responsiveness observed underscores the potential for seamless integration into real-world traffic scenarios, enhancing safety and navigation.

The documentation of the experimental setup, including datasets, parameter configurations, and performance metrics, provides a comprehensive guide for future development and research in the field of lane line detection. Lessons learned from iterative improvements further contribute to the knowledge base, facilitating ongoing advancements in intelligent transportation systems.

While the developed lane line detection system has showcased commendable results, it remains an evolving solution. Continued research and development will focus on addressing any identified limitations and refining the algorithm for enhanced performance. The success of this project contributes to the broader goal of creating safer and more efficient roadways through the integration of advanced computer vision technologies.

### B. Future Scope

**Advanced Sensor Fusion:** Integration of multiple sensors such as cameras, LiDAR, radar, and highdefinition maps can enhance lane detection accuracy and robustness. Sensor fusion techniques will allow systems to compensate for individual sensor limitations and provide a more comprehensive understanding of the environment.

**Deep Learning Approaches:** Deep learning techniques, particularly convolutional neural networks (CNNs), offer great potential for improving lane detection performance. Future research may focus on developing CNN architectures optimized for lane detection tasks and leveraging large-scale datasets for training.

**Semantic Segmentation:** Moving beyond traditional lane detection, future systems may employ semantic segmentation to classify pixels into meaningful categories, including lane markings, road boundaries, vehicles, and pedestrians. This holistic approach enables a more comprehensive understanding of the scene and supports higher-level decision-making.

**Real-time Performance Optimization:** As the demand for real-time lane detection in autonomous vehicles increases, future research will focus on optimizing algorithms for efficiency and speed. Techniques such as hardware acceleration, parallel processing, and algorithmic optimizations will be crucial for achieving real-time performance on resource-constrained platforms.

**Adaptive and Context-aware Systems:** Future lane detection systems will become more adaptive and context-aware, dynamically adjusting their behavior based on environmental conditions, driving context, and user preferences. Adaptive algorithms will improve robustness across diverse scenarios, including varying weather conditions, road geometries, and traffic densities.

**End-to-End Systems:** Rather than treating lane detection as a standalone task, future systems may adopt end-to-end approaches that directly map raw sensor inputs to vehicle control commands. This holistic approach simplifies the system architecture and enables more efficient integration with higher-level autonomous driving functionalities.

## REFERENCES

- [1] Canny, J. (1986). "A Computational Approach to Edge Detection."
- [2] Hough, P. V. C. (1962). "Method and Means for Recognizing Complex Patterns."
- [3] Fardi, B., et al. (2019). "Lane Detection: A Survey." *Sensors*, 19(11), 2481.
- [4] Pan, X., Shi, J., Luo, P., Xiao, J., & Tang, X. (2018). "Two-Stream Neural Networks for Tampered Face Detection."
- [5] Li, Y., et al. (2018). "Real-time Lane Detection with Efficient Convolutional Neural Network."
- [6] Xu, Y., & Yang, H. (2019). "Road Lane Detection Using Modified U-Net Convolutional Neural Network." *Sensors*, 19(12), 2717.
- [7] Lee, J., Lee, J., Lee, S., & Yoon, K. J. (2017). "VPGNet: Vanishing Point Guided Network for Lane and Road Marking Detection and Recognition."
- [8] Hurtado, D. F., et al. (2019). "A Comparative Analysis of Deep Learning Approaches for Lane Detection."
- [9] Mohamed Dhibi, Hassen Maaref, Mohamed Hammami, & Mohamed Atri. (2020). "A novel approach for lane detection based on a dynamic threshold and parallel lines tracking." *International Conference on Intelligent Systems and Computer Vision (ISCV)*.
- [10] Argha Mondal, Saurabh Kumar, Preeti Mishra, & Soumya Ranjan Nayak. (2020). "An Efficient Method for Lane Detection and Tracking Using SVM Classifier." *International Conference on Electrical, Electronics, Communication, Computer, and Optimization Techniques (ICEECCOT)*.
- [11] Hussain Saleh Al-Qarni, Fathi E. Abd El-Samie, & Rania Shalan. (2020). "A novel approach for automatic lane detection." *IEEE Access*, 8, 3345133463.
- [12] Xinjie Yang, Bo Zhou, Xuebin Gao, & Xianglong Tang. (2020). "Lane detection in complex scenes based on modified Hough transform and adaptive threshold." *IEEE Access*, 8, 191473-191483.
- [13] Poonam Kumari, & Neelam Rani. (2020). "Realtime lane detection and tracking based on inverse perspective mapping technique." *Journal of King Saud University-Computer and Information Sciences*.
- [14] Hiba Al-Akel, & Bassam Al-Mahadeen. (2020). "Lane detection and tracking using machine learning techniques: a survey." *Journal of Ambient Intelligence and Humanized Computing*, 11(12), 5593-5613.
- [15] Muhammad Idrees, & Qaisar Abbas Naqvi. (2020). "Lane detection and departure warning system based on road safety." *2020 15th International Conference on Computer Science & Education (ICCSE)*.
- [16] Yoonseop Kang, Chanyong Park, & Seungji Yang. (2020). "Real-Time Lane Detection with Displacement-Aware Deep Learning." *IEEE Transactions on Intelligent Transportation Systems*, 21(10), 4351-4363.





10.22214/IJRASET



45.98



IMPACT FACTOR:  
7.129



IMPACT FACTOR:  
7.429



# INTERNATIONAL JOURNAL FOR RESEARCH

IN APPLIED SCIENCE & ENGINEERING TECHNOLOGY

Call : 08813907089  (24\*7 Support on Whatsapp)