



# **iJRASET**

International Journal For Research in  
Applied Science and Engineering Technology



---

# **INTERNATIONAL JOURNAL FOR RESEARCH**

IN APPLIED SCIENCE & ENGINEERING TECHNOLOGY

---

**Volume:** 12    **Issue:** XII    **Month of publication:** December 2024

**DOI:** <https://doi.org/10.22214/ijraset.2024.66075>

**[www.ijraset.com](http://www.ijraset.com)**

**Call:** ☎ 08813907089

**E-mail ID:** [ijraset@gmail.com](mailto:ijraset@gmail.com)

# Low-Power Retentive True Single Phase Clocked(TSPC) D-Flip-Flop with Redundant Precharge Free Operation

S. Bhanu Venkata Prasad<sup>1</sup>, Dr.G.Sujatha<sup>2</sup>

Department of ECE, Sri Venkateswara College of Engineering, Tirupati

**Abstract:** *In this paper, optimizing power consumption of flip-flops (FFs) can significantly reduce the power of digital systems. In this article, an energy-efficient retentive true single- phase-clocked (TSPC) FF is proposed. With the employment of input-aware precharge scheme, the proposed TSPC FF precharges only when necessary. In addition, floating node analysis and transistor level optimization are employed to further ensure the high energy efficiency of the FF without significantly increasing the area.*

*As The proposed Low power Retentive TSPC FF consumes less power which can be used in application like PLL (phased Lock loop) The main objective of a PLL is to generate a signal in which the phase is the same as the phase of a reference signal. The main Block For this is To design Phase frequency Circuit, Which is designed by using Low power Retentive TSPC FF To Give the better Results compare to conventional Circuit with a power Supply of 1.2 V by using Tanner EDA Tool.*

**Keywords:** *Flip-flop (FF), low voltage operation, low-power, redundant-precharge-free, true-single-phase-clocked (TSPC).*

## I. INTRODUCTION

Flip-flops are the basic building block of the data path structure. They allow for the storage of data, processed by combinational circuit and synchronization of operation at a given clock frequency. They are the fundamental building block of the digital electronics systems used in computers and many other types of systems. Flip flop can be either simple or clocked; simple devices are known as latches. A latch is level sensitive, and mainly used as storage element. And clocked devices are known as flipflop. Flip-flop is edge sensitive means their output only changes on a single type of clock edge (positive or negative going edge). Flip-Flop is an electronic circuit that stores the logical state of one or more data input signal in response to a clocking pulse. They are often used in computational circuits to operate in selected sequences during recurring clock intervals to receive and maintain data for a limited time period sufficient for other circuits within a system to further process data [1]. Data is stored in flip-flop at each rising and falling edge of clock signal so that it can be applied as inputs to other combinational or sequential circuits, such flip-flops that store data on rising or falling edge of clock are referred as single edge triggered flip flops and the flip-flops that store data on both the rising and falling edge of a clock pulse are referred as double edge triggered flip-flops.

In CMOS circuit there are 3 sources of power dissipation, first static (leakage) power dissipation which is related to the logical states of the circuits and independent of switching activity. Second is short circuit power dissipation when both NMOS and PMOS transistor in the circuit is turned on simultaneously for short duration of time during switching. And as a result, direct current path between powers supply and ground is formed. And third is Dynamic (switching) power dissipation which is caused by power dissipation during switching activity [4]. Another important timing value for a flip-flop is the clock-to-output delay ( $t_p$ ) i.e. the time taken by a flip-flop to change its output after the clock edge.

In digital electronics, the power-delay product which is also known as switching energy, is FOM (figure of merit) correlated with the energy efficiency of a logic gate. Power delay product is used to evaluate the performance of CMOS process. When the technology scales down, total power dissipation decreases and at the same time delay varies depends upon supply voltage, threshold voltage, aspect ratio, oxide thickness, and load capacitance [5].

## II. RELATED WORK

### 1) Low power flip-flop designs featuring efficient embedded logic

A DML mode logic is introduced here which improves the speed performance of the design, also achieving significant energy consumption reduction.

The large capacitance in precharge node is eliminated by the DDFF and DDFF-ELM designs by following a split dynamic node structure. The DDFF offers power reduction. The DDFF-ELM reduces pipeline overhead. 4-b Johnson up-down counter is used to magnify the performance improvement of the designs, to which the DML logic is introduced. An area, power, and speed efficient method are presented here that incorporates complex logic functions into the flip-flop. The DML logic used in DDFF-ELM helps to achieve low power and high-speed requirements.

## 2) Designing and Evaluating Redundancy-Based Soft-Error Masking on a Continuum of Energy versus Robustness

Near-threshold computing is an effective strategy to reduce the power dissipation of deeply-scaled CMOS logic circuits. However, near-threshold strategies exacerbate the impact of delay variations on device performance and increase the susceptibility to soft errors due to narrow voltage margins. The objective of this work is to develop and assess design approaches that leverage tradeoffs between performance and the resilience of fault masking coverage for various soft-error mitigation techniques. The primary insight from this work is identification of redundancy-based hardening techniques that can deliver increased benefits in terms of the fault coverage energy ratio (FCER) for the leveraged tradeoffs within iso-energy constraints at near-threshold voltage (NTV). Simulation results demonstrate that temporal redundancy approaches offer favorable tradeoffs in terms of FCER. They exhibit reduced impact on performance variations and achieve extensive soft fault masking, therefore improving the system robustness within acceptable delay constraints. Meanwhile, it is shown that a hybrid redundancy approach can be used to protect a low-power system to maintain throughput while tolerating soft errors. We demonstrate how the FCER metric can be used as an optimization parameter to guide circuit synthesis to meet performance and robustness goals. Finally, the impact of design diversity on spatial and hybrid redundancy at NTV is assessed in terms of FCER and delay variation to form overall recommendations regarding soft-error mitigation at NTV.

## III. EXISTING SYSTEM

In existing system, several state-of-the-art low-power FFs are reviewed and the limitations are analyzed. All the listed FFs are single-phase-clocked FFs, which optimize the number of transistors related to the clock signal compared to TGFF.

In [13], a cross-charge control FF (XCFF) is proposed to reduce charged gate capacitance so as to reduce power consumption. As shown in Figures there is strong current contention at the output node of XCFF, so XCFF is not suitable for low voltage operation. Furthermore, XCFF needs to precharge some internal nodes no matter what the input data is, and extra power is wasted during the precharge and discharge operation.

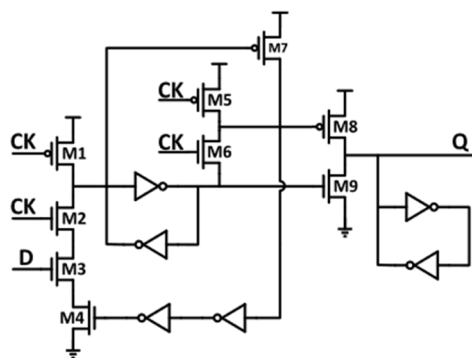


Figure – 1: XCFF

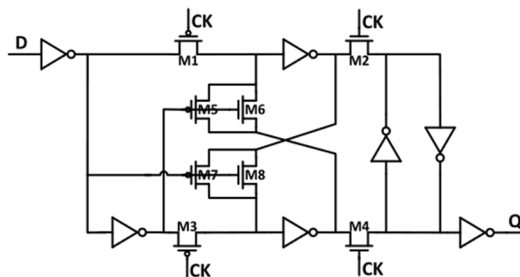


Figure – 2: ACFF

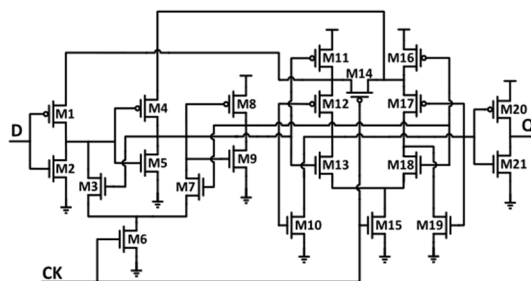


Figure – 3: TCF

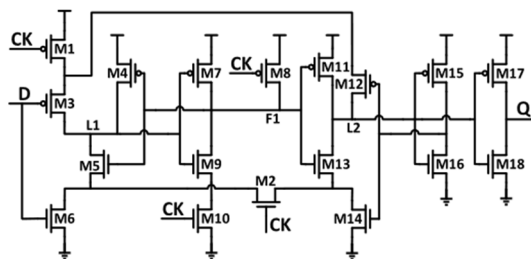


Figure – 4: SPC-18T

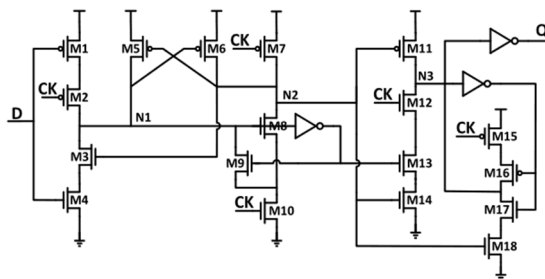

Figure – 5: S<sup>2</sup>CFF

Table – 1: Existing System Limitations

| Flip-flop          | Limitation   |
|--------------------|--|
| TGFF               | Large clock network, high power consumption                                  |
| XCFF               | Not suitable for low voltage operation, power is wasted during the precharge |
| ACFF               | It fails at the low supply voltages  |
| TCFF               | Not suitable for the low power operation                                     |
| SPC-18TFF          | There is a chance of voltage leakage   |
| S <sup>2</sup> CFF | Not suitable for the low power operation                                     |
| RTFF               | It fails at the low supply voltages  |

#### IV. PROPOSED SYSTEM

In the proposed system, the structure of the proposed FF is described in detail. In order to minimize the power consumption of FF, any unnecessary transitions of internal nodes should be removed. We start with S<sup>2</sup>CFF which is retentive TSPC and suitable for low voltage operations. To eliminate the redundant precharge and discharge operations, the FF is optimized by following steps. Firstly, unnecessary precharge operation of the internal node N2 is totally removed by the input-aware precharge scheme. Secondly, the floating node is under consideration to avoid short current which would greatly increase power consumption. Finally, unnecessary transistors are merged or removed to decrease the area.

Since the voltage of floating nodes may change after transition due to the leakage current, it is necessary to carefully analyze floating nodes to avoid the generation of short-circuit paths. With the insertion of the input-aware transistor, the voltage of the node N2 is no longer precharged to VDD at the negative half cycle of CK when the input is 0.



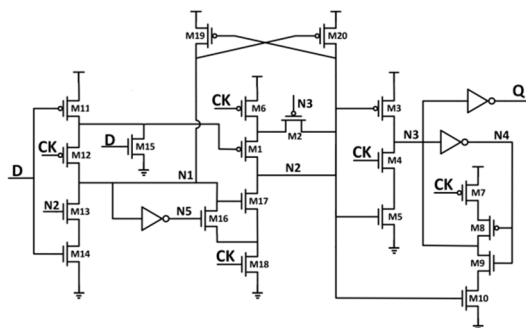


Figure-6: Schematic of the proposed System

When the output  $Q = 1$ , which means  $N3 = 0$ , the state of  $N3$  is maintained by  $M9$  and  $M10$ . To keep the transistor  $M3$  OFF and the transistor  $M10$  ON at that time, the voltage of  $N2$  needs to keep high. In order to avoid  $N2$  becoming floating while the next input data is 0, a transistor  $M2$  is inserted to keep the voltage of  $N2$ .  $M2$  is controlled by  $N3$  and provides a precharge path for  $N2$  when  $q = 1$ .

When the output  $Q = 0$ ,  $N3 = 1$ , the state of  $N3$  is maintained by  $M7$  and  $M8$ . If the precharge path of  $N2$  is cutoff at that time, which means the input data is 0 and the voltage of  $N2$  does not charge to high when  $CK$  is low, the only effect is that  $M3$  is ON, which will not lead to a short circuit path. When  $N3 = 1$ ,  $CK = 0$ , and  $D = 0$ , the node  $N3$  is isolated from its pull-down path ( $M4$  and  $M5$ ) through  $M4$  ( $CK = 0$ ), so the voltage of  $N2$  has no effect on the node  $N3$ . Similarly,  $N1$  is isolated from its pull-down path ( $M13$  and  $M14$ ) through  $M14$  ( $D = 0$ ), and the voltage of  $N2$  has no effect on the node  $N1$ . Therefore, the floating of the node  $N2$  is negligible in this case.

The function of the FF is correct and the redundant precharge operation is removed after adopting the input-aware precharge scheme and floating node analysis, but the FF can be further improved. The PMOS  $M11\_1$  which is used to generate the inversion of the input data can be merged into  $M11$ . But the NMOS  $M15$  cannot be merged into  $M14$  at the same time. Once both PMOS and NMOS are merged, which means the drain of  $M11$  and  $M14$  is directly connected, which can lead to functional failures of the FF. Thus, the NMOS  $M15$  is reserved. The transistor  $M13$  in  $S^2CFF$  is removed because it no longer plays a significant role in the proposed structure.

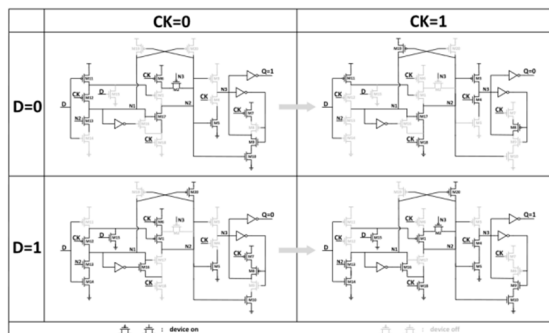


Figure-7: Operation diagram of the proposed FF at different D and CK

- 1) *High-to-Low Transition:* When  $CK$  is low, the node  $N1$  is charged to  $VDD$  through  $M11$  and  $M12$ , the node  $N2$  is charged to  $VDD$  through  $M6$  and  $M2$ , the node  $N3$  keeps low through  $M9$  and  $M10$ , and the output  $Q$  keeps high. At the rising edge of  $CK$ ,  $N2$  is discharged to  $GND$  through  $M17$  and  $M18$ , and then  $M13$  is turned off to isolate the FF from changes in the input data. At the same time, the node  $N3$  is charged to  $VDD$  through  $M3$ , and then the output  $Q$  changes to 0. The voltage of  $N1$  keeps high through  $M19$ , while the voltage of  $N2$  keeps low through  $M17$  and  $M18$  during the positive half cycle of  $CK$ .
- 2) *Low-to-High Transition:* When  $CK$  is low,  $N2$  is charged to  $VDD$  through  $M6$  and  $M1$ ,  $N1$  is discharged to  $GND$  through  $M13$  and  $M14$ , the node  $N3$  keeps high through  $M7$  and  $M8$ , and the output keeps low. At the rising edge of  $CK$ , the input data is isolated through  $M12$ , and the node  $N3$  is discharged to  $GND$  through  $M4$  and  $M5$ , then the output  $Q$  changes to 1. The voltage of  $N1$  keeps low through  $M16$  and  $M18$ , while the voltage of  $N2$  keeps high through  $M20$  during the positive half cycle of  $CK$ .

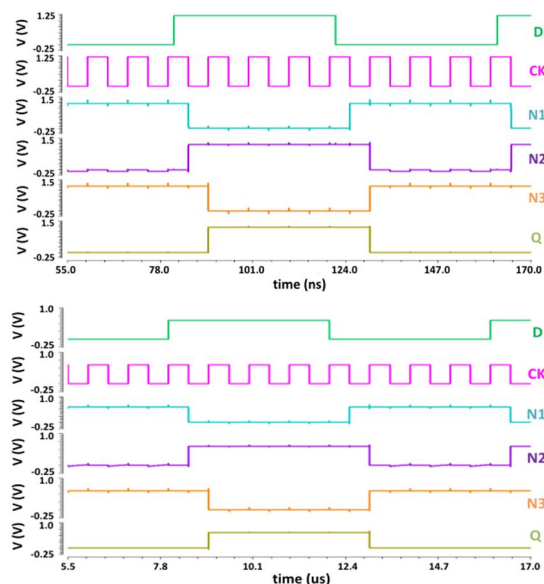


Figure-8: Transient waveform of the proposed FF

#### Algorithm

- Create the project in the S-edit
- Import all the library files.
- Construct the circuit by using the library files.
- And then for that circuit generate the Tspice file. 5. Then the code will be generated.
- Then we have to give the input and the operating 7. Signals by inserting the code.
- Print the output responses by giving the appropriate commands.
- Execute the code If there is any error check and rectify it and the execute the code.
- The responses will be displayed in the W-edit.

## V. RESULTS

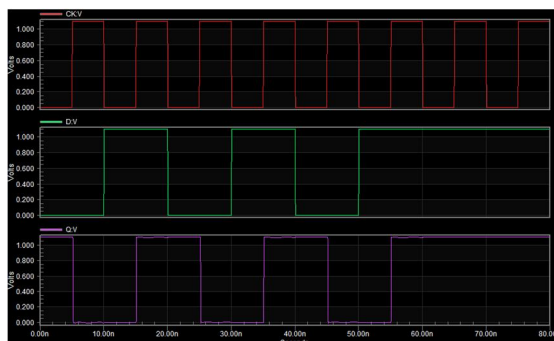


Figure-9: Proposed System outputs

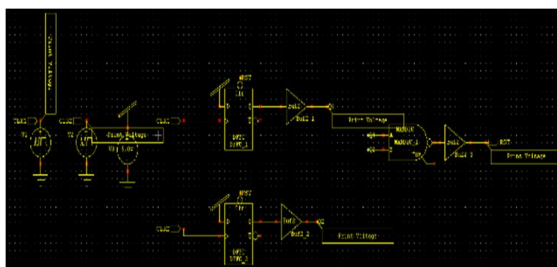


Figure-10: phase detector

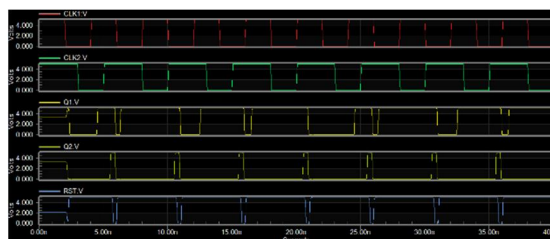


Figure-11: Waveforms

## VI. CONCLUSION

By removing the redundant precharge and discharge operations, the power of the proposed flip-flop is greatly reduced and it will avoid the generation of the short-circuit paths.

## REFERENCES

- [1] L. Atzori, A. Iera, and G. Morabito, "The Internet of Things: A survey," *Comput. Netw.*, vol. 54, no. 15, pp. 2787–2805, Oct. 2010.
- [2] T. Tekeste, H. Saleh, B. Mohammad, A. Khandoker, and M. Ismail, "A nano-watt ECG feature extraction engine in 65-nm technology," *IEEE Trans. Circuits Syst. II, Exp. Briefs*, vol. 65, no. 8, pp. 1099–1103, Aug. 2018.
- [3] T. Tekeste, H. Saleh, B. Mohammad, and M. Ismail, "Ultra-low power QRS detection and ECG compression architecture for IoT healthcare devices," *IEEE Trans. Circuits Syst. I, Reg. Papers*, vol. 66, no. 2, pp. 669–679, Feb. 2019.
- [4] A. Pullini, D. Rossi, I. Loi, G. Tagliavini, and L. Benini, "Mr. Wolf: An energy-precision scalable parallel ultra low power SoC for IoT edge processing," *IEEE J. Solid-State Circuits*, vol. 54, no. 7, pp. 1970–1981, Jul. 2019.
- [5] J. P. Cerqueira, T. J. Repetti, Y. Pu, S. Priyadarshi, M. A. Kim, and M. Seok, "Catena: A near-threshold, sub-0.4-mW, 16-core programmable spatial array accelerator for the ultralow-power mobile and embedded Internet of Things," *IEEE J. Solid-State Circuits*, vol. 55, no. 8, pp. 2270–2284, Aug. 2020.
- [6] J. L. Shin et al., "The next generation 64b SPARC core in a T4 SoC processor," *IEEE J. Solid-State Circuits*, vol. 48, no. 1, pp. 82–90, Jan. 2013.
- [7] L. Moreau, R. Dekimpe, and D. Bol, "A 0.4 V 0.5fJ/cycle TSPC flipflop in 65 nm LP CMOS with retention mode controlled by clockgating cells," in *Proc. IEEE Int. Symp. Circuits Syst. (ISCAS)*, May 2019, pp. 1–4.
- [8] A. Andrei, P. Eles, O. Jovanovic, M. Schmitz, J. Ogniewski, and Z. Peng, "Quasi-static voltage scaling for energy minimization with time constraints," *IEEE Trans. Very Large Scale Integr. (VLSI) Syst.*, vol. 19, no. 1, pp. 10–23, Jan. 2011.
- [9] X. Zhang et al., "32bit×32bit multiprecision razor-based dynamic voltage scaling multiplier with operands scheduler," *IEEE Trans. Very Large Scale Integr. (VLSI) Syst.*, vol. 22, no. 4, pp. 759–770, Apr. 2014.
- [10] W.-J. Tsou et al., "Digital low-dropout regulator with anti PVT-variation technique for dynamic voltage scaling and adaptive voltage scaling multicore processor," in *IEEE Int. Solid-State Circuits Conf. (ISSCC) Dig. Tech. Papers*, Feb. 2017, pp. 338–339.
- [11] S. Jain, L. Lin, and M. Alioto, "Dynamically adaptable pipeline for energy-efficient microarchitectures under wide voltage scaling," *IEEE J. Solid-State Circuits*, vol. 53, no. 2, pp. 632–641, Feb. 2018.
- [12] J. Lee et al., "A self-tuning IoT processor using leakage-ratio measurement for energy-optimal operation," *IEEE J. Solid-State Circuits*, vol. 55, no. 1, pp. 87–97, Jan. 2020.
- [13] A. Hirata, K. Nakanishi, M. Nozoe, and A. Miyoshi, "The cross chargecontrol flip-flop: A low-power and high-speed flip-flop suitable for mobile application SoCs," in *Dig. Tech. Papers. Symp. VLSI Circuits*, Jun. 2005, pp. 306–307.
- [14] C. K. Teh, T. Fujita, H. Hara, and M. Hamada, "A 77% energy-saving 22-transistor single-phase-clocking D-flip-flop with adaptive-coupling configuration in 40 nm CMOS," in *IEEE Int. Solid-State Circuits Conf. (ISSCC) Dig. Tech. Papers*, Feb. 2011, pp. 338–339.
- [15] N. Kawai et al., "A fully static topologically-compressed 21-transistor flip-flop with 75% power saving," *IEEE J. Solid-State Circuits*, vol. 49, no. 11, pp. 2526–2533, Nov. 2014.
- [16] Y. Cai, A. Savanth, P. Prabhat, J. Myers, A. S. Weddell, and T. J. Kazmierski, "Ultra-low power 18-transistor fully static contentionfree single-phase clocked flip-flop in 65-nm CMOS," *IEEE J. Solid-State Circuits*, vol. 54, no. 2, pp. 550–559, Feb. 2019.
- [17] Y. Kim et al., "A static contention-free single-phase-clocking 24T flip flop in 45 nm for low-power applications," in *IEEE Int. Solid-State Circuits Conf. (ISSCC) Dig. Tech. Papers*, Feb. 2014, pp. 466–467.
- [18] F. Stas and D. Bol, "A 0.4-V 0.66-fJ/cycle retentive true-single-phaseclock 18T flip-flop in 28-nm fully-depleted SOI CMOS," *IEEE Trans. Circuits Syst. I, Reg. Papers*, vol. 65, no. 3, pp. 935–945, Mar. 2018.
- [19] F. S. Alghareb, R. A. Ashraf, and R. F. DeMara, "Designing and evaluating redundancy-based soft-error masking on a continuum of energy versus robustness," *IEEE Trans. Sustain. Comput.*, vol. 3, no. 3, pp. 139–152, Jul. 2018.
- [20] P. E. Dodd, M. R. Shaneyfelt, J. R. Schwank, and J. A. Felix, "Current and future challenges in radiation effects on CMOS electronics," *IEEE Trans. Nucl. Sci.*, vol. 57, no. 4, pp. 1747–1763, Aug. 2010.
- [21] M. Fazeli, A. Patooghy, S. G. Miremadi, and A. Ejllali, "Feedback redundancy: A power efficient SEU-tolerant latch design for deep sub-micron technologies," in *Proc. 37th Annu. IEEE/IFIP Int. Conf. Dependable Syst. Netw. (DSN)*, Jun. 2007, pp. 276–285.
- [22] Z. Huang, "A high performance SEU-tolerant latch for nanoscale CMOS technology," in *Proc. Design, Automat. Test Eur. Conf. Exhib. (DATE)*, 2014, pp. 1–5.





10.22214/IJRASET



45.98



IMPACT FACTOR:  
7.129



IMPACT FACTOR:  
7.429



# INTERNATIONAL JOURNAL FOR RESEARCH

IN APPLIED SCIENCE & ENGINEERING TECHNOLOGY

Call : 08813907089  (24\*7 Support on Whatsapp)