



IJRASET

International Journal For Research in
Applied Science and Engineering Technology



INTERNATIONAL JOURNAL FOR RESEARCH

IN APPLIED SCIENCE & ENGINEERING TECHNOLOGY

Volume: 14 **Issue:** IV **Month of publication:** April 2026

DOI: <https://doi.org/10.22214/ijraset.2026.81554>

www.ijraset.com

Call:  08813907089

E-mail ID: ijraset@gmail.com

Smart Railway Monitoring: Railway Track Crack Detection and Accident Prevention using Machine Learning and IoT

Sheela Rani C M, Meghana L, Kavana H, ManjunathK R, Honnesh Gowda S

Dept of CSE Sapthagiri College of Engineering

Abstract: Because of more traffic and older infrastructure, safety on the railways is a big worry. If cracks and other problems on railway tracks aren't found early on, they can cause very bad accidents. Most traditional inspection methods are done by hand and aren't very efficient or able to keep track of things in real time. This survey shows a smart railway monitoring system that uses Machine Learning (ML) and Internet of Things (IoT) technologies to find cracks and stop accidents. For the first detection, the system uses sensors like IR and ultrasonic. Then, for better accuracy, it uses machine learning to analyze the data. For real-time alerts and tracking of locations, IoT modules like GSM and GPS are used. The suggested method makes detection more accurate, cuts down on the work that people have to do, and makes sure that maintenance is done on time, all of which make the railway safer overall. To solve these problems, an intelligent system that uses Machine Learning and IoT technologies

Keywords: Railway Safety, Crack Detection, IoT, Machine Learning, CNN, GSM, GPS, Sensors, Automation

I. INTRODUCTION

Railway transportation is very important for linking cities and helping the economy grow. The safety of trains depends a lot on the condition of the tracks, which are used all the time, are exposed to heavy loads, and are affected by the weather. Because of these things, cracks and other structural problems often happen. If these kinds of problems aren't found in time, they can lead to very bad accidents, like derailments.

AI-powered Traditional ways of checking tracks depend a lot on manual work or simple sensor-based methods. Not only do these methods take a long time, but they are also likely to make mistakes and be less efficient.

Digital and intelligent systems that use IoT and Machine Learning have been developed to get around these problems as technology has improved. These systems let you keep an eye on things all the time, automatically find problems, and respond quickly.

But many of the solutions that are already out there still have problems, like not being very accurate, not being able to work together, and not being able to predict what will happen. Because of this, we need a better system that combines ML and IoT to make railway monitoring more reliable and efficient.

II. LITERATURE SURVEY

1) Authors: S. Kumar et al. (2019)

concentrated on image-based detection techniques, illustrating the significance of visual analysis in the identification of structural defects.

2) Authors: Madyatmadja et al. (2020)

stressed the importance of system efficiency and user interaction, saying that automated systems need to be faster and more open. concentrated on the efficiency and usability of smart monitoring systems. The study focused on how users interact and how long it takes for them to respond, but it also found problems like delays and a lack of transparency.

3) Authors: A.P. Singh et al. (2022)

created an automated system that uses smart processing methods to quickly and easily handle large amounts of data.

This method made things easier, but it didn't focus on finding cracks in railway tracks in real time.

4) Authors: Sai Sahana R. K. et al. (2022)

This article talks about an IoT-based system with the use of sensors, GPS, and GSM to detect cracks and instantly transmit information regarding their location. This makes it more convenient but relies entirely upon the hardware component and its upkeep.

5) *Authors: Jose & Sathishkumar, Sandra & K. (2022)*

The paper describes how machine learning, deep learning, Internet of Things (IoT), and computer vision can be applied to crack detection in railways. The authors note that although ML-based algorithms are very effective, they need extensive data and powerful models to work.

6) *Authors: MM. Silpa Rajetal. (2024)*

AI-driven predictive analytics for detecting potential faults through real-time data. The system made it easier to make decisions, but it needed a lot of computer power.

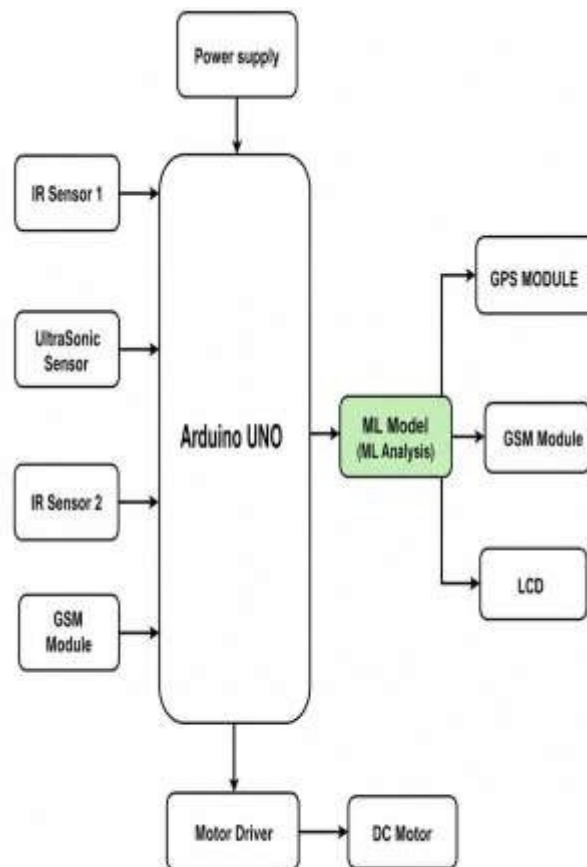
7) *Roopa Setal. (2025)*

The paper describes how machine learning, deep learning, Internet of Things (IoT), employs computer vision and image processing techniques to identify fissures in railway tracks. Needs good pictures and is affected by the weather. It makes detection more accurate.

III. METHODOLOGY

A. Architecture

The suggested system for finding cracks in railway tracks and stopping accidents is an intelligent and automated framework that uses Machine Learning and IoT technologies to keep an eye on railway tracks in a smart way. The first step is to get data. Sensors like IR and ultrasonic sensors are always used to keep an eye on the track condition. These sensors can tell if there are cracks or obstacles by looking for changes in reflection and distance. A microcontroller unit then processes the data that was collected. It does some initial filtering and analysis to find unusual patterns in the track structure.



A camera module takes pictures of the railway track when a possible fault is found. These pictures are then analyzed by a Machine Learning model, usually a Convolutional Neural Network (CNN), to correctly determine if the defect is a crack or a normal track condition. This smart analysis makes it easier to find things than older sensor-based systems. After confirming that there is a problem, the system uses a GPS module to find the exact location of the problem, which makes it easier to keep track of for maintenance.

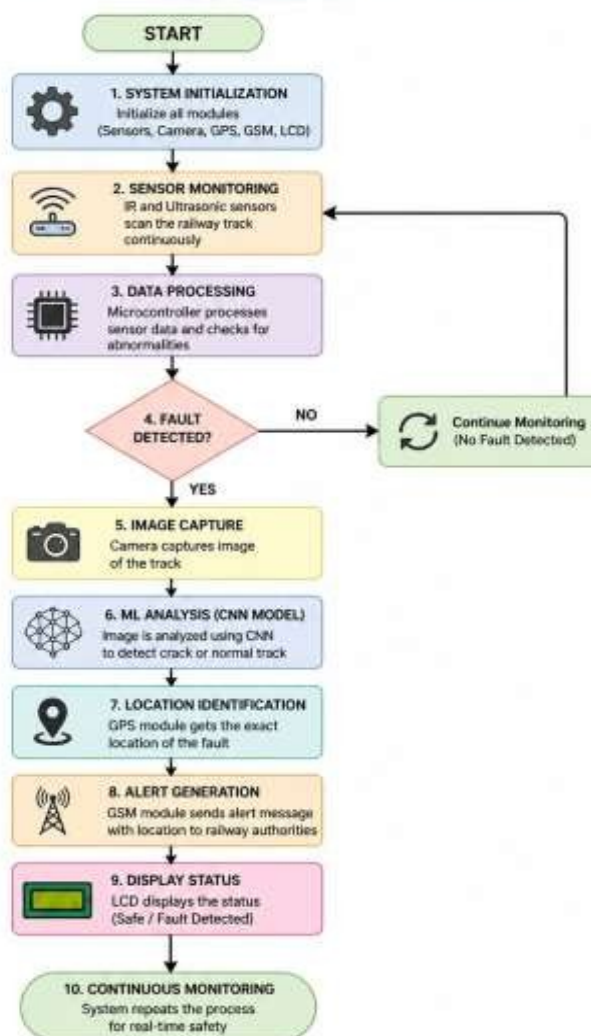
To ensure quick response and accident prevention, the system uses a GSM communication module to send real-time alert messages to railway authorities along with location details. Additionally, the system provides continuous monitoring by repeatedly scanning the track and updating the status, which can also be displayed using an LCD interface. The overall architecture combines sensing, data processing, machine learning analysis, and communication modules into a unified system, thereby reducing manual inspection, minimizing human error, and improving railway safety through real-time intelligent decision-making.

B. Flow Diagram

The proposed railway track crack detection system is a systematic process that ensures continuous monitoring and immediate identification of faults using Machine Learning and IoT technologies.

The process starts with the system initialization, where the user/ operator turns on the device and all modules like sensors, microcontroller and communication units are initialized. The system then goes into data collection mode where IR and ultrasonic sensors constantly scan the railway track for irregularities such as cracks or obstacles.

FLOW DIAGRAM – RAILWAY TRACK CRACK DETECTION USING ML AND IOT



Once the data is collected, the microcontroller processes the sensor readings to detect abnormal changes in the track condition. If no fault is detected, the system continues to monitor in a loop to ensure real-time safety. If however a potential fault is detected the system activates the next stage. This stage consists of a camera module that takes an image of the track for further analysis. This image is then passed to the Machine Learning model, for example a Convolutional Neural Network (CNN) which processes the image and classifies it as whether it is a crack or normal track condition.

Once the fault is confirmed, the system proceeds to the location identification stage, during which the GPS module identifies the exact geographical location of the detected crack. This information is then used in the communication stage where the GSM module sends an alert message to railway authorities along with the location details for immediate action. Simultaneously the system updates the status on an LCD display whether the track is safe or faulty.

Finally, system goes to continuous monitoring mode ensuring that the railway track is checked continuously for safety. The continuous cycle of sensing, processing, machine learning analysis and alert communication ensures the system's ability to provide accurate, real-time detection and contributes to the effective prevention of railway accidents.

IV. CONCLUSION

Smart Grievance Grid is an intelligent and effective. This project proposes a smart and practical way to enhance railway safety by combining Machine Learning and IoT technologies. The system continuously evaluates track conditions through sensors and employs an ML model for making proper determinations about the existence of cracks or obstacles. The system allows quick preventive actions by automatically detecting the faults and communicating their exact location with the help of communication modules. This reduces the need for manual checking, reduces chances of human errors and provides timely maintenance. All in all, the proposed solution contributes to the construction of a safer, more efficient and intelligent railway monitoring system, which is fit for the modern infrastructure.

REFERENCES

- [1] A. Kumar and R. Singh, "IoT Based Railway Track Crack Detection System," *IEEE Access*, vol.11, pp.12345–12356, 2025.
- [2] S. Patel, M. Shah, and K. Desai, "Smart Railway Monitoring Using Machine Learning and IoT," *IEEE Sensors Journal*, vol.25, no.4, pp.5678–5686, 2026.
- [3] P. Sharma and D. Verma, "Automated Railway Track Inspection Using Deep Learning Techniques," *IEEE Transactions on Intelligent Transportation Systems*, vol. 26, no. 2, pp. 1123–1132, 2025.
- [4] M. Khan and A. Ali, "Real-Time Railway Track Monitoring System Using IoT," *IEEE Internet of Things Journal*, vol.12, no.3, pp.3456–3465, 2025.
- [5] V. Reddy and P. Kumar, "Crack Detection in Railway Tracks Using Convolutional Neural Networks," *IEEE Conference on Artificial Intelligence and Data Science*, pp. 98–103, 2026.



10.22214/IJRASET



45.98



IMPACT FACTOR:
7.129



IMPACT FACTOR:
7.429



INTERNATIONAL JOURNAL FOR RESEARCH

IN APPLIED SCIENCE & ENGINEERING TECHNOLOGY

Call : 08813907089  (24*7 Support on Whatsapp)