



iJRASET

International Journal For Research in
Applied Science and Engineering Technology



INTERNATIONAL JOURNAL FOR RESEARCH

IN APPLIED SCIENCE & ENGINEERING TECHNOLOGY

Volume: 5 Issue: X Month of publication: October 2017

DOI: <http://doi.org/10.22214/ijraset.2017.10177>

www.ijraset.com

Call: ☎ 08813907089

E-mail ID: ijraset@gmail.com

PSCAD Simulation Model of 12 Pulse DSTATCOM for Voltage Sag Improvement

Paras Gaur¹, Pankaj Chaudhary², Harsh Patel³

^{1, 2, 3} School of Electrical Engineering (Select), Vellore Institute of Technology (Chennai), Tamil Nadu 600127

Abstract: This paper describes the modeling, simulation and analysis of 12-pulse distribution static compensator (D-Statcom) for voltage sag. Simulation of D-STATCOM was done using Power System Computer Aided Design (PSCAD) software. The power distribution system or facilities in the plants are due to the voltage. Simulation results prove that D-STATCOM is capable of reducing voltage sag and improving the power quality of the distribution system.

Keywords : Voltage sag, Distribution line, 12 pulse D-STATCOM, Power Quality, PSCAD

I. INTRODUCTION

Power distribution system is a part of the electrical system between power sources and end users. Wholesale energy sources are located very far from the load center and provide the service to the consumer through the distribution system. Due to the heavy burden in the demand of the consumer side in the modern era, the demand for reliable power has been kept in mind with high quality, reliable ideas. Distribution systems in the modern industries include the use of non-linear and electronically switched devices. Today, the whole world facing the problem of power quality is an imbalance of voltage sag, voltage swell, flicker, harmonics, voltage imbalance, active and reactive power and low power factor. This may have an impact on power supply, which could affect the manufacturing industry and inhibit economic development in any country. [1][2] Voltage sags are from 10% to 90% nominal voltage of magnitude. 12 pulse DSTATCOM is applied to reduce voltage sags in the distribution line, thus improving the power transfer capacity. DSTATCOM generates and absorbs reactive power at a fast speed because there is no moving part involved and it goes well with energy storage facilities, which opens the opportunities for other applications like energy market and security. There are several such papers that have been published to improve the quality of the power, the effectiveness of D-statcom, especially voltage sags.

II. RELATED KNOWLEDGE

A. Review on Power Quality Issues

Power quality is a set of power boundaries, which allows a piece of equipment to work in its desired way without significant performance or without any significant loss of life expectancy. All electrical equipment failure occurs when one or more electrical quality problems are exposed. Electrical equipment can be an electric motor, transformer, generator, computer, printer, communication device or home appliance. Based on the severity of all these devices and other problems, adverse reactions to the quality of power [3]

Without proper power, an electrical device can get spoiled, may fail before prematurely or does not work at all. There are many ways in which electrical power can be of poor quality and there may be many other reasons for such poor quality powers. Some of the most common power supply problems are voltage spikes, voltage dips, harmonic deformation, voltage imbalances, flicker, transients. The increase in voltage sag load, such as short circuits or defects, the start of motors or electric heaters are on, or they are due to the sudden increase in the source impedance, usually due to the loose connection.

To improve the quality of electricity in both volts, at least for those customers who work with the processes of susceptible to voltage sags and small blockages, currently based on traditional technology improvements in the market or the electricity semiconductor offers a wide range of products on the use of conversion techniques. [4]

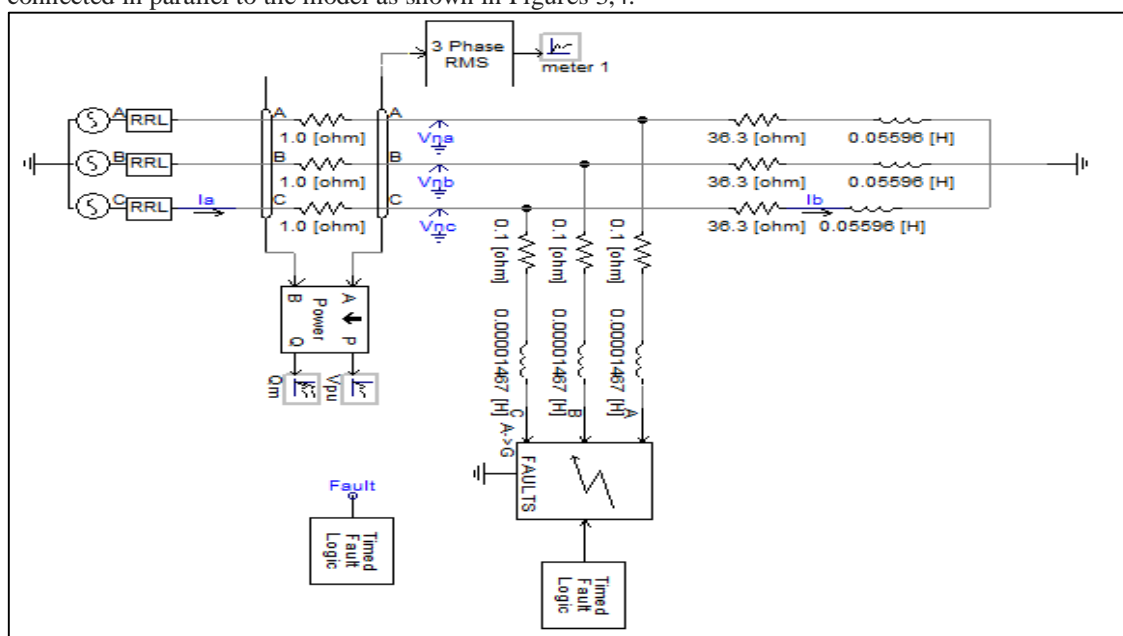
To overcome Sags problem, shunt and series devices are generally applicable to the system. Therefore, this letter implements 12 pulse DSTATCOM using 6 Pulse D STATCOM technology and using PSCAD. Then, during the sag it is done for analysis during the before and after application.

B. Basic Configuration and Operation of D-STATCOM

D-STATCOM is a three-phase and shunt connected power electronics-based device. It is connected to the load on delivery systems. The objective is to inject an accurate sinusoidal current near the point of connection. The voltage source inverter converts an input

III. METHODOLOGY

Therefore, using the values given earlier, the value for load resistance is 36.3, while the value for the load installation is 0.05596 HK. For this research, two 6 pulse DSTATCOM connected to parallel is used. Power switches are due to the ability to turn off and turn on positive point signal due to the turn-off thyristor (GTO). To maintain the load voltage is kept 1PUU, then PI controller is used to control GTO. In addition, the PWM switching method is also applied to generate three phase 50Hz sinusoidal voltage. Figure 2 shows the test system with the fault model in PSCD before the application of 12-pulse DSTATCOM. Depending on the data, fault generator blocks are created in PSCAD. After this, the fault of the land fault and the three-step fault is included in the system and the injection is done. After this, 12 pulse DSTATAPM is applied and the model of the picture system is connected in parallel to the model as shown in Figures 3,4.



1227

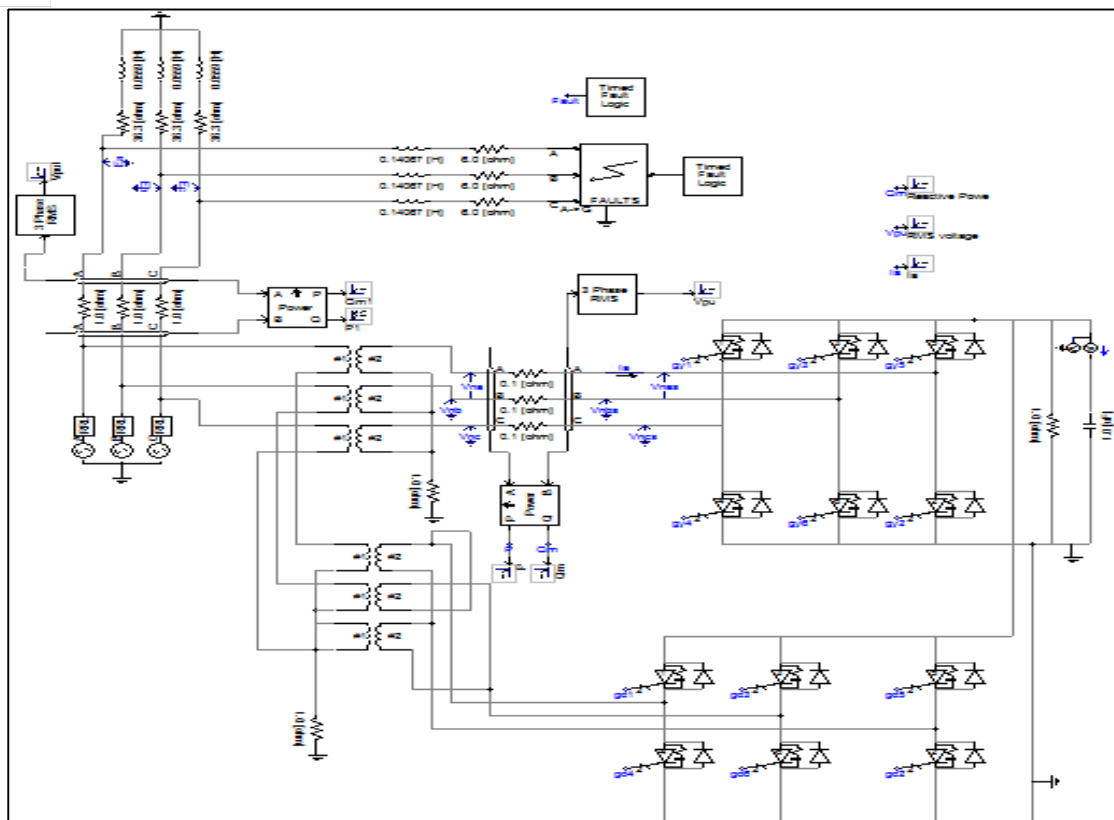


Figure3. Simulation System with Fault with 12 pulse DSTATCOM

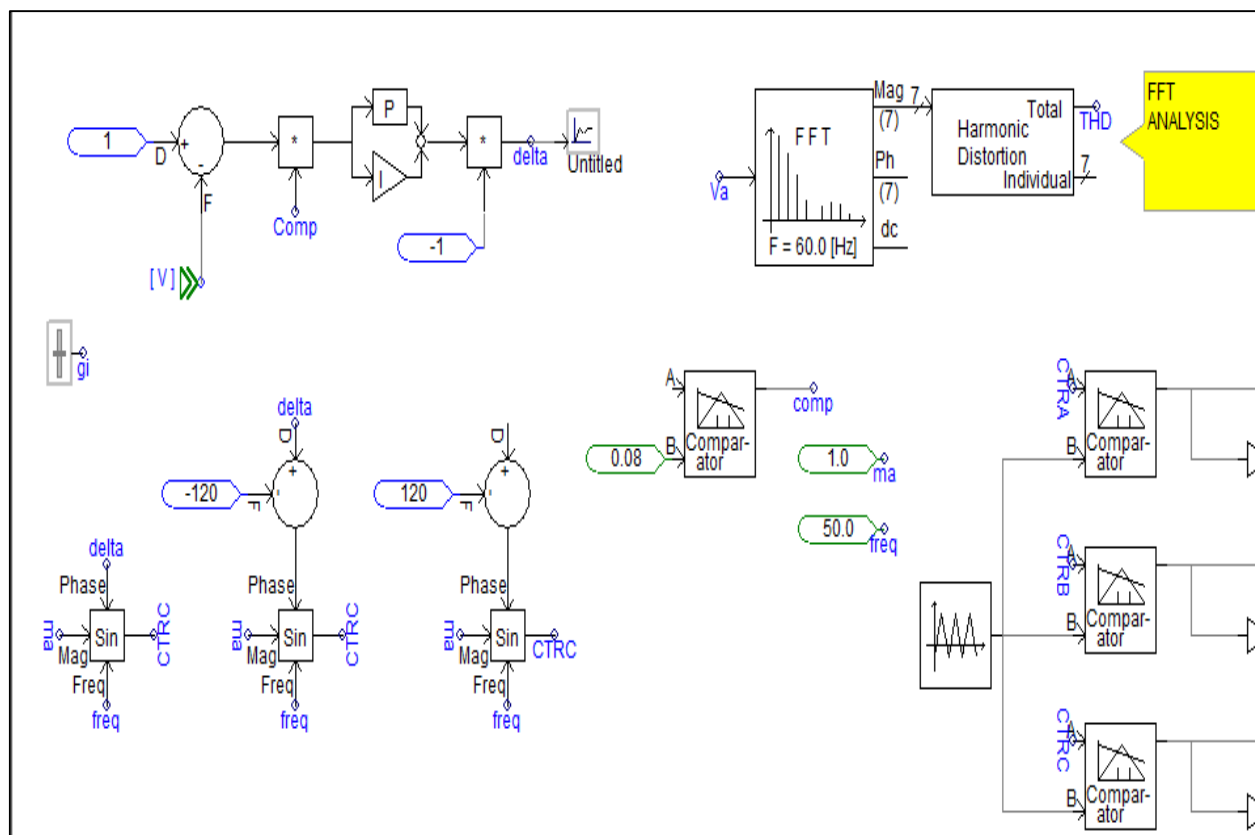


Fig. 4 Control circuit of D-STATCOM

IV.SIMULATION RESULTS AND DISCUSSION

A.Simulation with Fault without DSTATCOM

The distribution system, which included three-phase balanced defect, was simulated for two seconds. The voltage was loosely at 0.66 seconds for 1.06 seconds. Actual and reactive power meters are used to measure actual and reactive power in the distribution line system. Reactive during a single phase fault in land, it is classified as a line on the ground. The three-phase system is one of the most common disadvantages in the same row. On the basis of test systems, a single fault line is assumed that the phase which touched the ground, since the system could not be loaded prior to the loss. The voltage is the percentage of the sig position and the delivery phase system has three phase balanced fault. Illustrated diagrams as figures show that VRMS voltage decreases from 0.959 to 0672 per unit. This means that the total loss in the input voltage is one phase for the ground, 30% of the total deficit in the input voltage is one step on the ground. Changing the fault impedance can change the depth of procrastination. Next, three phase errors have been created. The result in Figure 5 shows that the voltage is looser and the system bothers. This time, the VRMS voltage decreased from 0.959 to 0.052 per unit. This means that the total loss in the input voltage is the basis of the ABC phase, because 94.6% of the total loss in the input voltage is ABC phase on the ground.

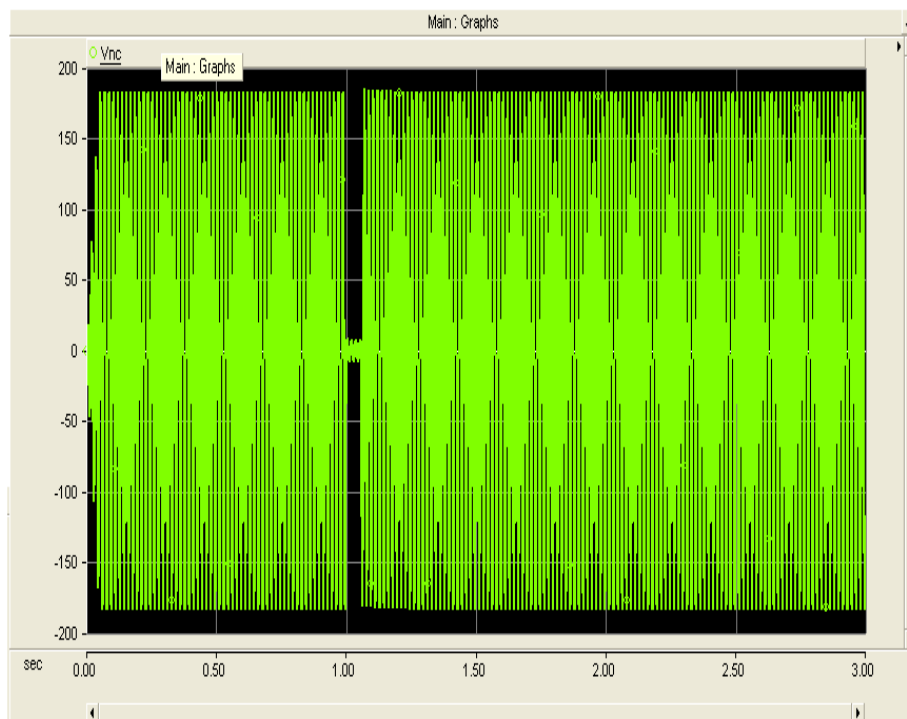


Fig.5(a) RMS Vnc's Overlay Graph, Voltage sag at 1.06 sec.

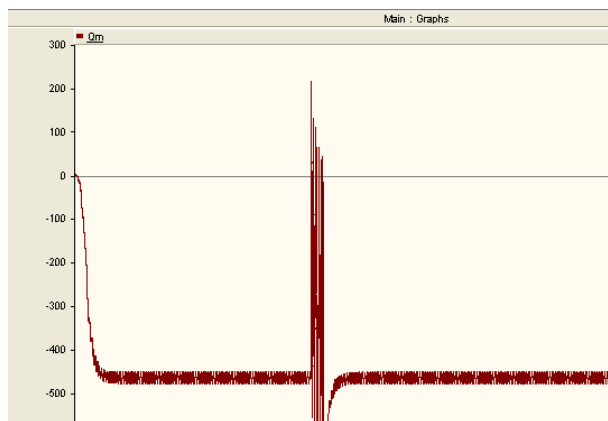


Fig.5(b).Reactive power's graph

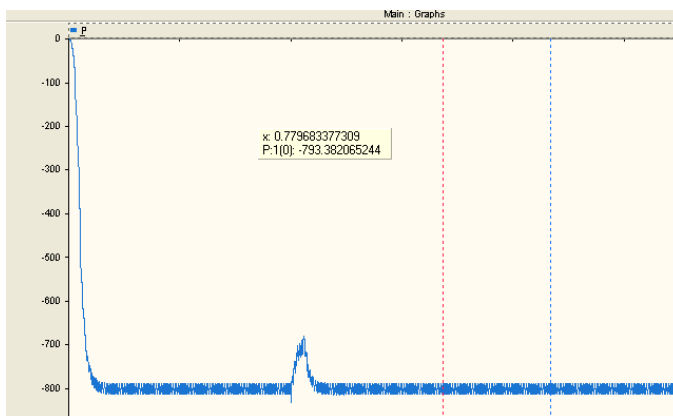


Fig.5(c) P's output overlay graph

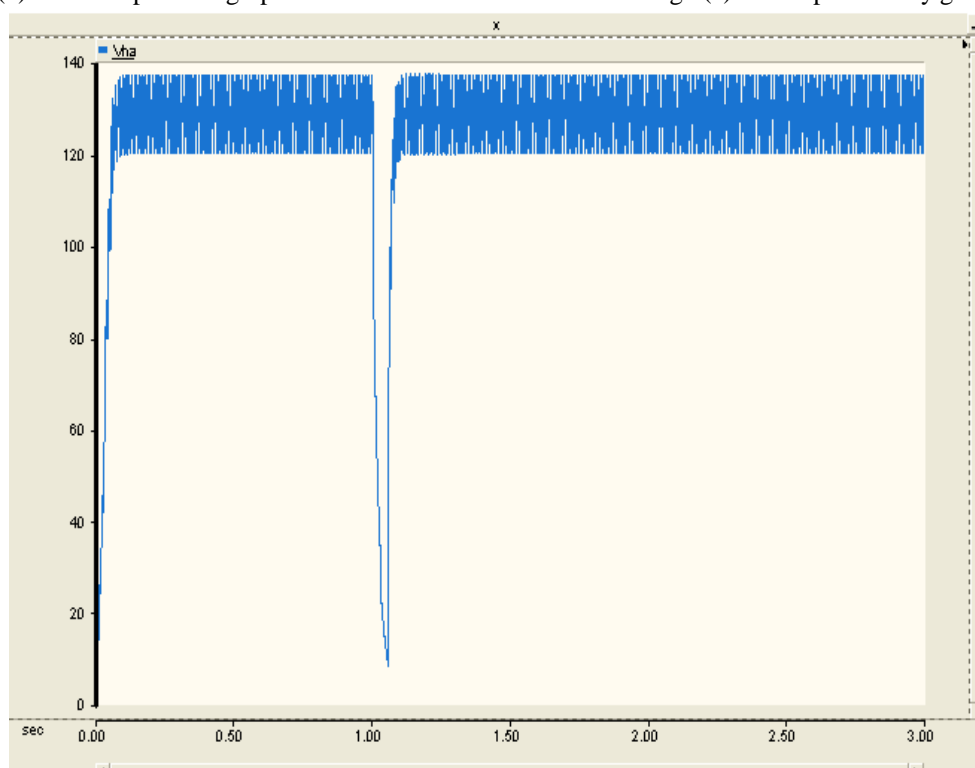


Fig.5(d) Vna's Overlay graph

Fig.5 Voltage, Real Power and Reactive Power under Voltage Sag condition

B.Simulation with Fault with STATCOM

12 pulse DSTATCOM is applied by connecting two 6 pulse DSTATCOM parallel to the network. When the test model is simulated with one stage on the ground, the result of the system output voltage is 6 figure. It can be seen that the voltage bag has been reduced in per unit value and output voltage generated in 1.0 PU has been shown. If the graph shows a spike at the beginning and at the end of the receptacle the capacitor is due to charging and discharging. Along with the connection of 12 pulse DSTATCOM, there is almost one outcome when there is a three-step fault. It has been completely reduced before and the VRMS output voltage 1 P has been maintained if the graph shows a spike at the beginning and the capacitor is due to charging and discharge at the end of the transmission.

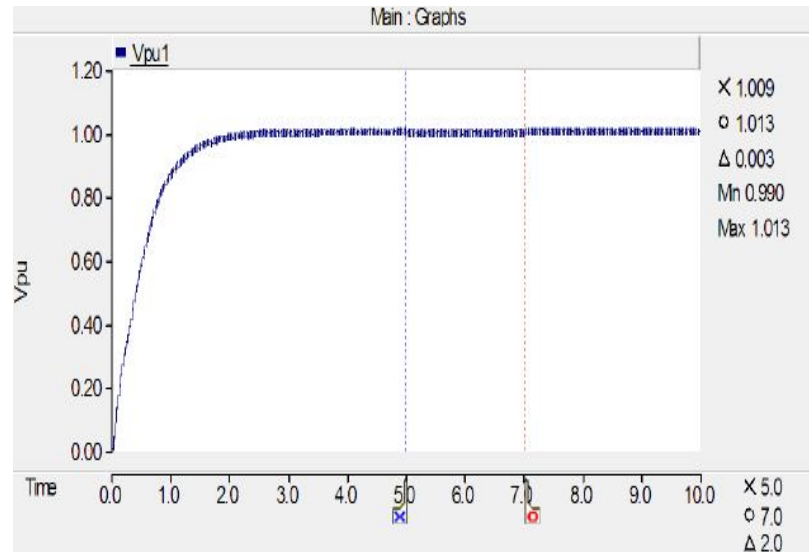


Fig.6 Simulation with Fault with 12-Pulse STATCOM

V. CONCLUSIONS

Voltage sag problems have been resolved using D-STATCOM. Simulation model of 12-pulse D-STATCOM has been prepared using PSCAD / EMTDC software. From the result obtained, the 12-pulse D-STATCOM reduces and compensates for a single line voltage sags for ground fault and three-phase fault without any difficulty.

The performance of the power system with the installed STATCOM is better than the performance of the power system, without the installed equipment in it. The problem of power quality can not be completely eliminated, but it can be reduced so that the result of this problem is as minimal as possible.

REFERENCES

- [1] Belkacem Mahdad, Tarek Bouktir, Kamel Srairi, "Strategy of Location and Control of FACTS Devices for Enhancing Power Quality", IEEE MELECON, pp 1068-1072, 2006.
- [2] IEEE Transaction ON Power Delivery, VOL. 17, NO. 1, January 2002, —Modelling and Analysis of Custom Power Systems by PSCAD/EMTDC by Olimpo Anaya-Lara and E. Acha.
- [3] A. Hernandez, K. E. Chong, G. Gallegos, and E. Acha "The implementation of a solid state voltage source in PSCAD/EMTDC," IEEE Power Eng. Rev., pp. 61-62, Dec 1998.
- [4] Youjie Ma, Ahui Huang, Xuesong Zhou, "A Review of STATCOM on the Electric Power System", IEEE Proceedings International Conference on Mechatronics and Automation, pp. 162-167, 2015.
- [5] D.K. TANTI1, BRIJESH SINGH2, DR. M.K. VERMA3, DR. O. N. MEHROTRA "An ANN Based Approach for optimal placement of D-STATCOM for Voltage Sag mitigation" International Journal of Engineering Science and Technology (IJEST)



10.22214/IJRASET



45.98



IMPACT FACTOR:
7.129



IMPACT FACTOR:
7.429



INTERNATIONAL JOURNAL FOR RESEARCH

IN APPLIED SCIENCE & ENGINEERING TECHNOLOGY

Call : 08813907089  (24*7 Support on Whatsapp)