



# **iJRASET**

International Journal For Research in  
Applied Science and Engineering Technology



---

# **INTERNATIONAL JOURNAL FOR RESEARCH**

IN APPLIED SCIENCE & ENGINEERING TECHNOLOGY

---

**Volume: 6      Issue: III      Month of publication: March 2018**

**DOI: <http://doi.org/10.22214/ijraset.2018.3379>**

**[www.ijraset.com](http://www.ijraset.com)**

**Call: ☎ 08813907089**

**E-mail ID: [ijraset@gmail.com](mailto:ijraset@gmail.com)**

# Android Based Application for Chhattisgarh Excursion

Mr. Sunil Kumar Dewangan<sup>1</sup>, Dr. J P Patra<sup>2</sup>, Kajal<sup>3</sup>, Pearl Joseph<sup>4</sup>

<sup>1</sup>Assistant Professor, Dept. of CSE, SSIPMT, Raipur (Chhattisgarh), INDIA

<sup>2</sup>Professor, Dept. of CSE, SSIPMT, Raipur (Chhattisgarh), INDIA

<sup>3, 4</sup>. B.E. IT Scholar, SSIPMT, Raipur (Chhattisgarh), INDIA

**Abstract:** Chhattisgarh Excursion is an Android application which gives the details about the tourist places present in the state. Chhattisgarh is situated in the heart of the country, India and is the 10<sup>th</sup> largest state in the Country. The state has attractive natural diversities, rich cultural heritage. In addition to that, it also possesses many ancient monuments, beautifully carved temples, rare wildlife, palaces, waterfall etc. Most of these sites offer a unique experience to tourists and are unexplored. And thus, this application helps the tourists to explore these beautiful sites in the state.

**Index Terms:** Chhattisgarh, Tourism, Tourists, Place, Rating, Application, Android, Parks and Gardens, Listview, Government, Information

## I. INTRODUCTION

Tourism is the world's most significant industry and one of the targets of tourism development is economical development. Tourism requires being accountable in conditions of sustainability at both local and global scales and is regarded as a resource-intensive industry. Tourism industry is one of the most rewarding companies in country and add substantially to overseas exchange earned [1-2].

Chhattisgarh is the newly born state of India. Under the State Reorganization Act, through the reorganization of Madhya Pradesh on November 1, 2000, Chhattisgarh became a new state [3]. Chhattisgarh state is situated in the central India and Raipur is the capital of the state. It is ranked as the 16<sup>th</sup> most populated state of the nation and is the 10<sup>th</sup> largest state of India, with an area of 135,190 km<sup>2</sup> [4]. It is bounded by Madhya Pradesh in the northwest, Maharashtra in the west, Andhra Pradesh in the south, Orissa in the east, Jharkhand in the northeast and Uttar Pradesh in the north [5]. Because of its proximity to the Tropic Of Cancer and its dependence on the monsoons for rains, the climate of Chhattisgarh is tropical, hot and humid. Summer season in Chhattisgarh is from April to June and temperatures can reach up to 40° Celsius [6]. The monsoon season is from late June to October. Winters are pleasant with low temperatures and less humidity. The demographic profile suggests that about 80% of the total population lives in rural areas [7]. Chhattisgarh is known to be tribal-dominated state [8].

Chhattisgarh is best place to visit for both international and domestic tourists. There are 27 districts within it. A significant impact has been made by the governmental bodies in the tourism by requiring that every state of India have a corporation to administer support issues related to tourism [9].

In the Chhattisgarh Excursion application, tourist places along with the nearby hotels are proposed. Moreover, how to reach to the destination places via Airport, Railway Station as well as bus stands is also demonstrated.

## II. PREVIOUS WORK

The Chhattisgarh Tourism Board has developed their tourism website for the tourists of the state, <http://cg tourism.choice.gov.in> [10]. Also, the board committee has their application available on Play Store named Chhattisgarh Tourism [11] which displays the information about a particular place in the state.

Furthermore, there are many national level applications available which guides the tourists for every state of India. Some of those applications are:

### A. Chhattisgarh Tourism

Chhattisgarh Tourism is an official travel guide application with 4.4 ratings on Google Play Store. This mobile application comes in handy as it is offline. Some main features of this application are: Main Attractions, All Destinations and Book Accommodation. The application user can directly call the official Chhattisgarh Tourism Call Center from the call button present on the home screen [11].

### B. India Tourist Places

Tourist Places in India is a free app with 5.0 ratings on Google Play Store in Hindi language that offers the detailed history and relevant information about the most popular Indian places and tourism idea about spending vacations and holiday. The app contains a number of photos about Indian tourism such as local customs, geographic wonders, diverse cultures and arts, etc. as well as brilliant articles. It shows detailed information like Direction, near places, Location, Map, information [12].

### C. Tour to Chhattisgarh

Tour to Chhattisgarh is an online mobile application with 5.0 ratings on the Google Play Store which gives information about the tourist spots in Chhattisgarh. This information is taken from the government website of Chhattisgarh Tourism and redirects the user to it. The app has map, government website and a search button in every module that redirects the user to Google to directly search more about a place [13].

## III. PROBLEM IDENTIFICATION

In the existing Chhattisgarh Tourism mobile application, the features like 'Maps', 'Directions', 'Visiting hours', 'Rating' and 'How to Reach' are not present. This makes this application quite inefficient for the tourists.

One more android application 'India Tourist Places' is available in the Google play store. In this application only two tourist places of the Chhattisgarh state are shown. This leads to insufficient information delivered to the tourists about the state that the state does not have fine numbers of tourist places. This will take the tourist business to a steep downfall and the revenue generated by the tourism will be decreased.

In the 'Tour to Chhattisgarh' mobile application, there are a variety of tourist places given. But it is not categorized evenly or presented in a specific order. This makes it inefficient for the user to look for a particular place.

In the application, Chhattisgarh Excursion we have included all the above mentioned & necessary features which are not present in the Chhattisgarh Tourism application. As well as in the Chhattisgarh Excursion we have included most of the famous tourist places and within a specified category.

## IV. METHODOLOGY

In the application Chhattisgarh Excursion, the main theme is to direct the tourist in Chhattisgarh state to their destination in very convenient manner with all the details on their fingertips. For displaying the list of the following modules, we have used the listview container in the Android studio IDE.

### A. First of all, the list of Categories of all the Sightseeing Places is Displayed. The list Includes the Following Modules

- 1) *Parks & Gardens*: It contains the list of all main Parks, Gardens and Zoos in the state. Parks and Gardens are the most common places where people want to visit very often. Anyone can go to the parks when they want to intake fresh air with some excursion purpose.
- 2) *Religious Places*: It contains the list of the famous religious places like Temples, Mosques and Churches present in the state. These places are most visited by those people who have immense faith upon the almighty.
- 3) *Shopping Malls*: It contains the list of the major Shopping Malls present in Chhattisgarh. Shopping Malls have attractive ambiances & are the eye-catcher places in every city. People prefer to go to the shopping malls as they find each and every things of their interest in one common place. People also go to malls these days to see the new movie releases.
- 4) *Waterfalls*: It contains the list of the beautiful waterfalls of the Chhattisgarh state. Waterfalls are the most beautiful natural view point. And the environment around the waterfall is very charming and soothing. It gives us the fresh and cool breeze which makes people feel peace.
- 5) *Other Attractions*: It contains the list of the miscellaneous places like Caves, Water Parks, and Stadiums etc. There are unique places which are present in every city and are different from other classifications and these places are not surely found in every city of the state.

In the sub-module, on clicking any of the trip places from the above mentioned list of any category, the details of that particular place will be displayed. The details comprises of:

- a) **Gallery:** The gallery includes the original snapshots of the tourist place which helps the user to decide whether he wants to visit the place or not on the basis of seeing the picture. The gallery plays an important role in the application as it directly depicts the ambience of the place.
- b) **Introduction:** It contains the general introduction of the place like when it was built, where it is situated, why the place was built, which the tourist must know. The contact details and visiting hours are given so that the tourists can plan their trip on time.
- c) **Rating:** This feature shows the ratings of the tourist places. It allows the user to have an oversight of the place. If the place holds 1 or 2 stars then it means that it is disliked by the previous tourists. If the place holds 3 stars then it means the place can be considered as neutral. If the place holds 4 or 5 stars then it can be concluded that it is liked by most tourists.
- d) **Location on Google Maps :** This facilitates the user to locate the place on the Google Maps. When a person is new to a city, this feature will help him/her plan his/her trip on time as it shows the distance between the place where the person resides and the destination. It also displays the time required to reach the destination.
- e) **Hotels Nearby:** It also contains the list of hotels near tourist places so that user can stay there before or after the excursion. The people who are new in the city and do not have a place to reside, can check in the hotels near these places they want to visit.
- f) **Hotel Booking:** with the hotels nearby, there is also an option for booking of those hotels through the application. This feature lets the tourist book the hotel of their interest on their fingertip.
- g) **How to Reach :** This tells the user how to reach their destination via Bus, Train and Flights from the capital city of the state Chhattisgarh i.e. from Raipur.

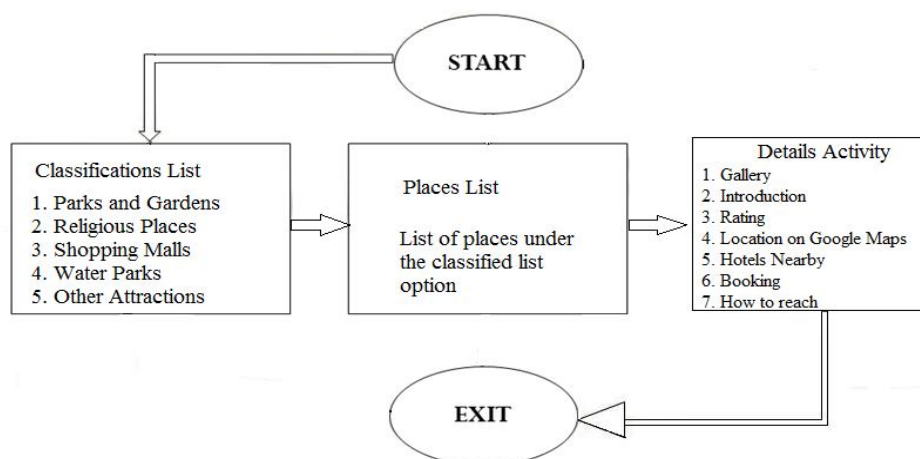


Figure: 1. Architectural Design

## V. RESULT & ANALYSIS

Chhattisgarh Excursion is an Android Application which can be used for the excursion purpose of a particular tourist place offline. The application offers the user to visit a place in the Chhattisgarh state of his/her choice. The categorized list on the home screen helps the user to do so. They can select a particular category say, Parks & Gardens, Religious Places, Waterfalls, Shopping Malls or Other Attractions.

The application displays the gallery and also the general introduction about the tourist place. It also shows the Visiting hours of the place. In addition to that, it helps the users by giving the location of the desired place on the Google Maps.

Also, it tells the users about the hotels nearby those tourist places with their booking facilities. Moreover, it also facilitates the 'How to reach' option which shows the ways to reach to the destination place via road and airways. And lastly, the user can rate the place after their excursion.

The requirements of the user are achieved in the project. The application Chhattisgarh Excursion successfully gives the details the tourist places in the Chhattisgarh state.

### A. SNAPSHOTS

- 1) **Home Page:** The following is the Home Page of the Chhattisgarh Android application. This displays the list of the classification of tourist places. The list includes: Parks & Gardens, Religious Places, Shopping Malls, Waterfalls and Other Attractions.





Figure: 2. Home Page

- 2) *Parks & Gardens*: This is the snapshot of the activity having the list of the Parks and Gardens. It contains five parks and gardens of the Chhattisgarh state. The list contains: Energy Park, Nandanvan, Kanan Pendari Zoo, Pirkhauti Mukhtangan and Kanger Valley National Park.



Figure: 3. Parks & Gardens

- 3) *Waterfalls*: This is the snapshot of the activity having the list of the Waterfalls present in Chhattisgarh. The list contains: Chitrakote Waterfalls, Ghatarani Waterfalls, Thamada Ghumar Waterfalls, Rajpuri Waterfalls and Amrit Dhara Waterfalls.

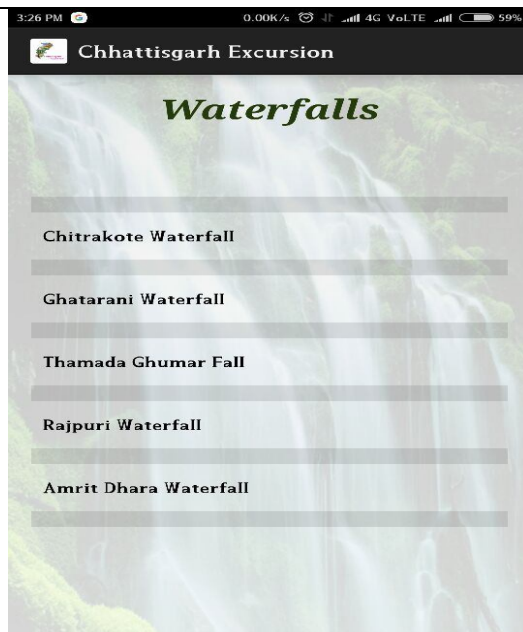


Figure: 4. Waterfalls

- 4) *Energy Park*: The following is a screenshot in which the tourist place “Energy Park” under the Parks & Gardens categories is shown. The upper part of the snapshot, displays the gallery which shows two pictures of Energy Park. The middle part displays the Introduction about the park and the lower right part is the Google Maps icon which on clicking locates the park on the map. The lower left part is the Rating section & at the end of the snap, there is a button “Click for Other Details” which on clicking opens a new page which contains the ‘Hotels Nearby’ & ‘How to Reach’ details as well.



Figure: 5. Energy Park

## VI. DISCUSSION AND CONCLUSION

The Chhattisgarh Excursion application displays all the information required by the tourists to visit the tourist places present in the Chhattisgarh state. The additional part of the application is that, it also displays the rating of the tourist places and also tells How to reach to the destination via Flight, Trains & Buses.

The objective of the project was to provide the user with an app that gives the details of the tourist places located in a state.

The project is therefore concluded to be the following:

- A. Easy to Access.
- B. Easy to Handle.
- C. Easy Communication.
- D. User friendly.

## VII. FUTURE SCOPE

At present the application represents a particular state i.e. Chhattisgarh. But, in future this application can be broadened for each and every state of the country. Or this application can be built by merging of the states of our country and will provide online bookings also.

## REFERENCES

- [1] Gupta and Mirjha, "Development of Tourism Industry and Marketing in Chhattisgarh", J Tourism Hospit 2016, 5:3, Volume 5 • Issue 3 • 1000219, ISSN: 2167-0269.
- [2] Jiaying Lu and Sanjay K. Nepal, "Sustainable tourism research: an analysis of papers published in the Journal of Sustainable Tourism", Journal of Sustainable Tourism, Vol. 17, No. 1, January 2009, 5–16.
- [3] <http://old.dprcg.gov.in/content/chhattisgarh-key-facts>
- [4] <https://cgstate.gov.in/about-chhattisgarh>
- [5] <https://www.ibef.org/states/chhattisgarh.aspx>
- [6]
- [7] <https://www.groupouting.com/place/kanker/>
- [8] <http://www.rediscoverindia.co.in/chhattisgarh.htm>
- [9] <https://tourismcongress.wordpress.com/2011/06/14/abstracts-colombo-conference>
- [10] [10] <http://cgtourism.choice.gov.in/>
- [11] <https://play.google.com/store/apps/details?id=com.ctb.chhattisgarhtourism&hl=e>
- [12] [12] <https://play.google.com/store/apps/details?id=com.zddapps.tourism>
- [13] <https://play.google.com/store/apps/details?id=com.vasithwam.apps.tour-tochhattisgarh>





10.22214/IJRASET



45.98



IMPACT FACTOR:  
7.129



IMPACT FACTOR:  
7.429



# INTERNATIONAL JOURNAL FOR RESEARCH

IN APPLIED SCIENCE & ENGINEERING TECHNOLOGY

Call : 08813907089  (24\*7 Support on Whatsapp)