



iJRASET

International Journal For Research in
Applied Science and Engineering Technology



INTERNATIONAL JOURNAL FOR RESEARCH

IN APPLIED SCIENCE & ENGINEERING TECHNOLOGY

Volume: 7 Issue: VIII Month of publication: August 2019

DOI: <http://doi.org/10.22214/ijraset.2019.8113>

www.ijraset.com

Call:  08813907089

E-mail ID: ijraset@gmail.com

Effect of Colchicine on Metabolic Activities of Plants

Dr. Sadia Fatima

Asst. Professor, Department of Botany, Anwarul Uloom College , New Mallepally, Hyderabad.

Abstract: Colchicine is an alkaloid extracted from *Colchicum autumnale* a plant, belonging to *Liliaceae*. Colchicine has antagonistic effect on cell division and this chemical directly acts on Tubulin proteins, present in Microtubules, thereby de-activating spindle formation and inhibits cell division. There is no segregation of chromosomes and they get highly condensed and the bulk volume of nucleus and cell size increases with the induction of polyploidy. Colchyploidy is tolerated in plant cells and it is fatal to animal cells. The present research work had been undertaken to study and estimate the cells showing induction of colchyploidy. The purpose of research is to estimate whether the extent of colchyploidy is more in underground stems. Colchicine treatments were given to the roots and stems at various concentrations of 0.01, 0.03 and 0.05 % for about 4 hours.

Keywords: Alkaloid , antagonistic effect, Tubulin ,condensed, Colchyploidy.

I. INTRODUCTION

The ability of this chemical to induce polyploids in crop species depend on the chemical concentration and duration of exposure . Colchicine binds to tubulin and prevents the polymerisation and formation of microtubules. As microtubules play major roles in basic functions of cell including protein assembly, mitosis, endocytosis, exocytosis, cell shape and motility, colchicine is toxic to all cell lines of the body.

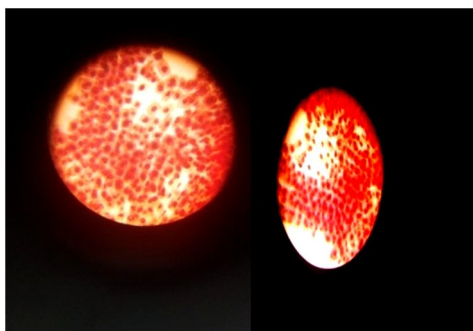
II. METHODOLOGY

The present research work had been undertaken to study and estimate the cells showing induction of colchyploidy. The underground stems were grown in the Botanical garden of our department at Anwarul Uloom College. Colchicine treatments were given to the roots and stems at various concentrations of 0.01, 0.03 and 0.05 % for about 4 hours. The Squash preparations of under ground stem material was done using Aceto orcein. And 1NHCLmethod. Smears were also studied. The Colchyploid cells were observed in the field of Microscope and tissue changes which appeared in these stem and root meristems were all similar in character. Since *Allium* root meristems offered material with large nuclei which were of advantage for cytological study this form was used most extensively for the detailed cytological studies . As chromosome segregation is induced by microtubules, colchicine is applied to inhibit mitosis to induce polyploidy and also mutations in plant cells. Mitotic polyploidization consists of doubling the somatic chromosome number using chemicals with antimitotic activity such as colchicine. *Colchicum autumnale*, blocks the cell at metaphase of mitosis. It binds to the tubulin and prevents its polymerization and causes disappearance of the mitotic spindle. Other chemicals with antimitotic activity similar to colchicine are colcemid, and recently oryzalin, is used.

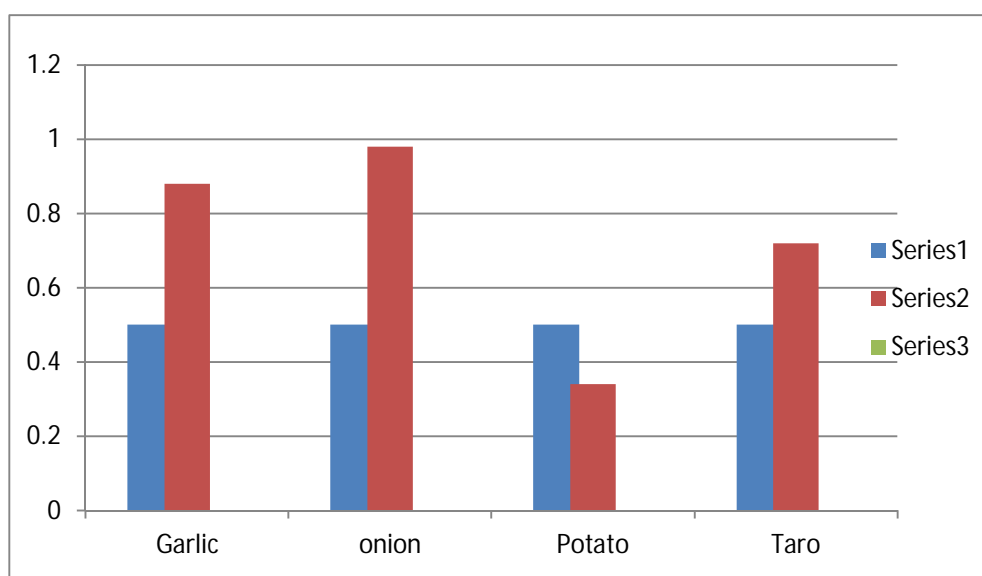
Effect of Colchyploidy induction in Plants

Garlic	S.No	Conc. Of Aqueous Solution	No. of Cells	% Of Colchyploidy	Colchyploid cells
	1	0.5	50	88%	44
	2	0.3	60	33%	20
	3	0.1	40	30%	12
Onion					
	1	0.5	235	98%	230
	2	0.3	80	31%	25
	3	0.1	65	23%	15
Potato					
	1	0.5	64	34%	22

	2	0.3	60	17%	10
	3	0.1	65	5%	3
Taro					
	1	0.5	73	72%	52
	2	0.3	52	57%	30
	3	0.1	50	44%	22



Induction of Colchiploidy in Plants



Induction of Colchiploidy

III. RESULTS & CONCLUSION

The intensity of colchicine complex should be proportional to the polyploids inducing capacity of this mutagen. Besides, the dose required for high mutation efficiency of a chemical mutagen is dependent on the properties of the agent, the solvent medium and the biological system. After studying the extent of colchiploidy, in roots of underground stems, it has been observed, onion and garlic show high % of induction of Colchicine at different concentrations of 0.5, 0.3 and 0.1 and treatment is given for 4-5 hours.

REFERENCES

- [1] Rauf S, Munir H, Abdullojon E, Basra SM (2006). Role of colchicine and plant growth regulators to overcome interspecific incompatibility. Gen. Appl. Plant Physiol. 32: 223-232.
- [2] Swaminathan MS, Sulba K (1959) Multivalent frequency and seed fertility in raw and evolved tetraploids of *Brassica campestris* var. 'toria'. Z Vererbungsl 90:385-392.
- [3] Sybenga J (1984) Preferential pairing in *Dactylis glomerata*? Can J Genet Cytol 26:640.
- [4] Udensi, OU. and Ontui, V. (2013). Determination by Flow Cytometry Polyploidy Inducing-capacity of Colchicine in *Cajanus cajan* (L.) Mill sp. Pakistan Journal of Biological Sciences.16:630-635.
- [5] Zadoo SN (1986) Chromosomal stability in induced tetraploids of *Atylosia scarabaeoides* Benth. Curr Sci 55:45-47.



10.22214/IJRASET



45.98



IMPACT FACTOR:
7.129



IMPACT FACTOR:
7.429



INTERNATIONAL JOURNAL FOR RESEARCH

IN APPLIED SCIENCE & ENGINEERING TECHNOLOGY

Call : 08813907089  (24*7 Support on Whatsapp)