



iJRASET

International Journal For Research in
Applied Science and Engineering Technology



INTERNATIONAL JOURNAL FOR RESEARCH

IN APPLIED SCIENCE & ENGINEERING TECHNOLOGY

Volume: 3

Issue: VI

Month of publication: June 2015

DOI:

www.ijraset.com

Call: ☎ 08813907089

E-mail ID: ijraset@gmail.com

Automatic Irrigation System using Embedded System and GSM Technology

A.Ramakrishna¹, Ch. Kanchana², B.sashanksrikar³, D.Barathreddy⁴, D.Sravankumar⁵

Dept. of ECE, VITS College of Engineering, Visakhapatnam, Andhra Pradesh, India

Abstract- *The increase in human population resulted in the increase of the demand for food production. Farmers are unable to meet the requirements due to irregular water supply. To meet the demand, a new type of system is needed to regulate the irrigation. Automatic irrigation is a form of irrigation system that incorporates the theory of digital control and feedback system with irrigation. In this system of irrigation, critical information (soil moisture content, humidity, sunlight) is sent to a microcontroller which is provided by sensors which is used by the microcontroller to schedule irrigation by turning on or off a water pump that supplies water to the farmland.*

Keywords- *Microcontroller, sensors, moisture, irrigation, sprinkler.*

I. INTRODUCTION

Agriculture is constantly losing land because of various reasons. India has arable land area of 159.7 million hectares out of which 82.6 million hectares is good for farming. But only 8% of the Indian population is working hard to cultivate these lands. Farming is of utmost importance to the survival of the inhabitants of an area. Considering the rate of population growth, there arises the needs to intensify the rate of food crop production so as to compensate for the increasing food demand. A method to reduce the problems associated with farming and as well increase food crop production is the implementation of a controlled technique to meet the soil moisture requirement for different food crops grown in respective locations. Automatic irrigation is a form of irrigation system designed to control the irrigation in accordance with the crop requirements. In this system information of various parameters such as soil moisture content, humidity, etc., are sent to a microcontroller by sensors. The microcontroller uses this information to regulate irrigation by turning on or off a water supply.

II. IRRIGATION SYSTEM

This irrigation system consists of four different sensors which are used to measure various parameters related to the crop production. They are Light Dependent Resistor (LDR), Humidity Sensor, Soil moisture Sensor and temperature Sensor. In general we are using the only a single set of sensors to carry out the operation of this irrigation system. But in the case of crops, the whole crop area is divided into sections and each section can be provided with its own set of sensors. The Light dependent resistor is a type of resistor whose resistor ranges about a few kilo Ohms during the presence of light and about a Mega Ohm during the absence of light. The LDR is used to determine the intensity of light or the time of the day. This helps the system to regulate the irrigation from time to time. The Soil moisture sensor is used to determine the moisture content present in the soil. This information is given to the microcontroller in terms of resistance. The best of determining the soil moisture is by using the electrodes. The resistance and the soil moisture are inversely proportional to each other. So with the increase in soil moisture there is a decrease in the resistance between the electrodes and vice versa. The Humidity sensor is used to determine the amount of humidity present at the crop level. The humidity sensor used in the design is a module which is the combination of a humidity sensor and temperature sensor. The humidity sensor measures the percentage of relative humidity in the air. During summer season the crops lose moisture content from the leaf which is converted into water vapor that goes up in the air resulting in the drying of leaves and withering. In order to resolve this problem a humidity sensor is placed at crop level. When the moisture in the leaves is converted into vapor, the humidity sensor is triggered because of the increase in the humidity level and the microcontroller sends out a signal to activate the sprinkler system. The temperature sensor is used to determine the occurrence of the fires in the crop area. When the fire occurs the temperature sensor is activated. Then the microcontroller drives the sprinkler system via relay. For the sake of safety a message is sent via GSM Modem to the farmer to carry out the safety precautions.

International Journal for Research in Applied Science & Engineering Technology (IJRASET)

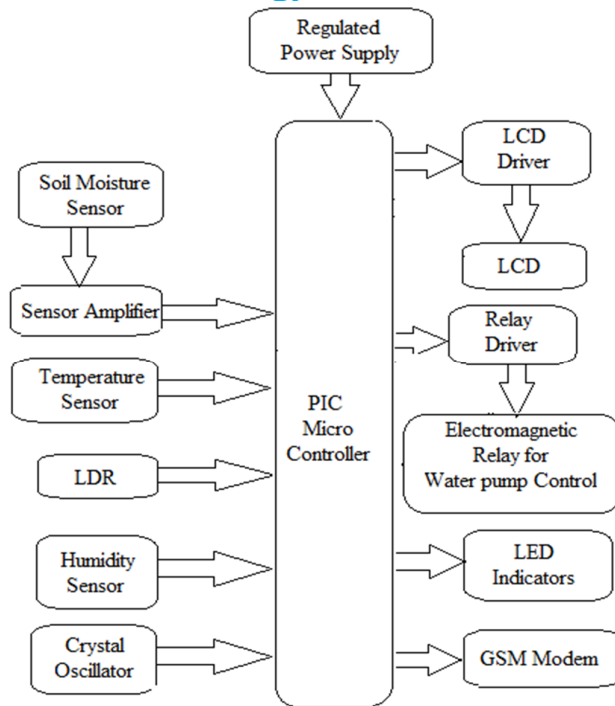


Figure 1: Layout of Automatic irrigation system

A. Hardware Description

Automatic Irrigation System using PIC Microcontroller can be used for various types of crops. The current irrigation unit is designed for only a single crop. When the system is powered ON, four different parameters are displayed on the LCD display. They are light, temperature, humidity and soil moisture. The parameters are displayed continuously with the variations occurring from time to time.

- 1) *Microcontroller:* The design uses PIC16F877A microcontroller. PIC16F877A is a family of modified Harvard Architecture microcontroller made by Microchip Technology. This is powerful microcontroller with nanosecond instruction execution and easily programmable with only 35 single word instructions. The entire automation of the system is done by this microcontroller. It has an inbuilt Analog to Digital converter. Because of this we do not require any ADC to be connected externally.

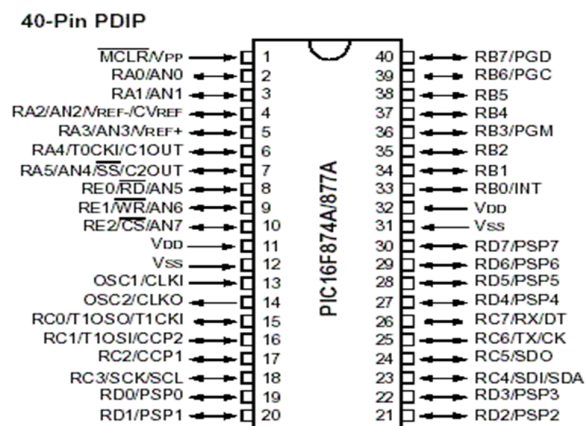


Figure 2: 40 Pin PIC16F877A Microcontrollers

2) Power Supply

- a) *Step down transformer:* The design uses a centre tap transformer that converts 230V from AC mains into 15V AC and gives -

International Journal for Research in Applied Science & Engineering Technology (IJRASET)

15V, 0V, 15V and 0.5 ampere. Transformer selection is based on the fact that regulator ICs require around 14v as input considering dropout voltage (around 2v), in order to obtain 12v power supply. The transformer steps down ac voltage from 230v ac to 15v AC. It is then given to bridge rectifier. Bridge rectifier converts the AC voltage into pulsating DC. It is then given to regulator IC which gives a constant dc voltage. These voltages are given to other ICs as VCC or reference.

b) *Bridge Rectifier*: Rectifier converts ac voltage into dc voltage. In the rectifier four diodes are connected in the form bridge along with a capacitive filter to generate the DC signal. Its input is from transformer and output is given to the voltage regulator IC.

c) *Voltage regulator*: The Voltage regulator IC gives constant DC voltage at output in spite of fluctuations in input. The design uses IC 7805 as the voltage regulator. It gives an output of 5V DC.

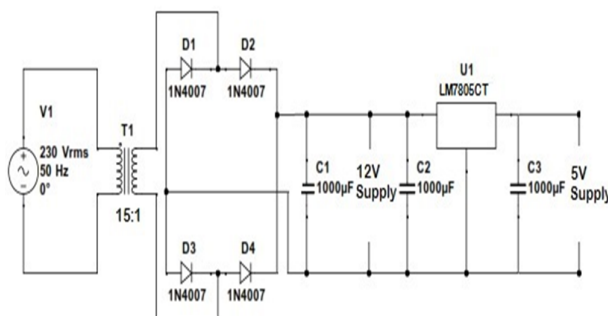


Figure 3: Power Supply

3) Soil Moisture Sensor

The commonly used soil moisture sensors are the electrodes or steel probes. In the design we are using the normal wires as electrodes. The soil moisture sensor follows the basic principle of a megger. The principle is that the moisture content in the soil is inversely proportional to the earth resistance. So the decrease in soil moisture results in the increase in earth resistance. This information is used by the microcontroller to drive the relay connected to the irrigation motor.

4) Light Dependent Resistor (LDR)

The design uses NSL19-M51 Light dependent resistor. In the night the resistance is very high and up to $1M\Omega$ but in the day time the resistance drops to a few ohms depending on the light intensity. So depending on the output resistance, the light intensity or the time of the day is determined. This helps us in generating the conditions

5) Temperature Sensor

The design uses LM35 temperature sensor. It is a precision integrated-circuit with an output voltage linearly-proportional to the Centigrade temperature. It can determine the temperatures over a range of -55°C to 150°C . It does not require any external calibration or trimming to provide typical accuracies. Here the temperature sensor is used to determine the fire accidents in crops. If there is a fire accident, the microcontroller drives the relay connected to the sprinkler system to put off the fire. For the sake of safety a message is sent to the farmer with the help of GSM Modem. The output voltage of temperature sensor rises at a rate of $10\text{mV}/^{\circ}\text{C}$. The output voltage ranges between 6V and -1V.

6) Humidity Sensor

The design uses HMTCA12 Humidity sensor module. It comprises of HSS1101 Humidity sensor and LM35 Temperature sensor. It has the characteristics of stable, high accuracy, quick response and good crossing-over. In the design humidity sensor is used to check the humidity in the air around the crops. The increase in humidity is because of evaporation of water from the leaves which results in withering of the leaves. So the increase in humidity is checked and the sprinklers are activated to attain the moisture on the crops. The reason for the usage of temperature sensor separately is because this model cannot determine the temperatures beyond 50°C .

7) Light Emitting Diode (LED)

It indicates the need of sprinkler and water supply. When LED is on, that means sprinkler or water supply should be on. If it is off there is no need of water.

International Journal for Research in Applied Science & Engineering Technology (IJRASET)

8) Pump and Relay Unit

The relay unit is designed in such a way that when a control signal is obtained from the microcontroller, it acts as a switch that turns ON/OFF the pump connected in the output. The relay unit consists of a BC547 transistor, 5 pin 12V relay and 1N4007 p-n junction diode. The transistor is connected in Common emitter configuration where the collector is connected to the 12V supply and the emitter is grounded. When the supply is given to the base of the transistor, it turns ON the relay and when the supply is cut off, the relay is cut off. The diode is added in the circuit to provide the protection of the circuit from back EMFs.

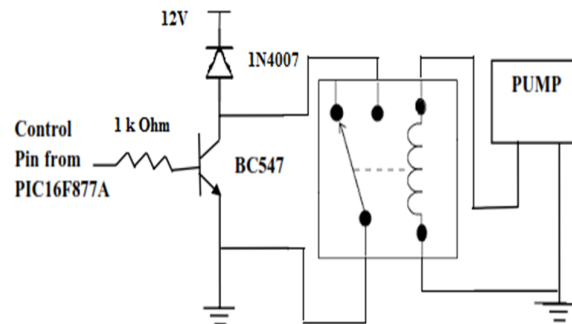


Figure 4: Interfacing pump with relay unit

9) Liquid Crystal Display (LCD)

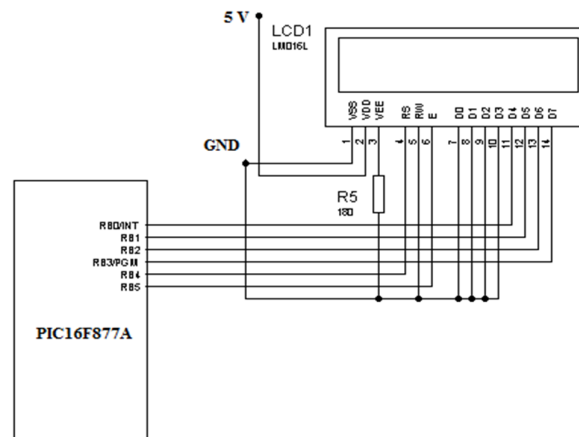


Figure 5: Interfacing LCD with PIC microcontroller

The LCD will display the alphabets, numbers, characters and symbols. The LCD used here is eight bit parallel type and the display size is 16x2. Liquid Crystal Display is used for displaying the sunlight, humidity, temperature and soil moisture values. LCD consists of three control pins and eight data pins. Based on the commands given to the control pins, data i.e the parameter values are written simultaneously to the LCD. The four data pins D4 to D7 of the LCD are connected to the PORTB pins RB0 to RB3 while the remaining data pins are grounded. Two control pins RS and E are connected to PORTB pins while the RW is grounded. RB4 and RB5 are used for register select (RS) and enable (E) respectively. Initially the display shows four parameters names along with their values. The parameter values to be displayed are sent to the LCD simultaneously. LCD accepts only the ASCII values as input. Hence the hexadecimal values are converted into ASCII values and it is fed to the LCD to display the temperature. VCC and V_{SS} are provided with 5V and ground respectively. VEE used for controlling LCD contrast was grounded so as to have a standard contrast.

10) Sensor Interfacing: The PIC microcontroller consists of inbuilt analog to digital converter. The PORTA is configured as the analog input channels. The outputs of the sensors are fed to the RA0 to RA3 pins of the PIC microcontroller. The inbuilt ADC of the PIC microcontroller converts the analog signal from the sensors in digital signals. The digital outputs thus converted are made available for the further process. The LDR is connected to the RA0 pin, the Temperature sensor for the RA1 pin, the Humidity sensor to the RA2 pin and finally the Soil moisture sensor probes are connected to the RA3 pin.

- 1) This irrigation system uses less water than conventional watering methods, such as sprinklers.
- 2) Smaller amounts of water applied over a longer amount of time provide ideal growing conditions.
- 3) The system extends watering times for plants, and prevents soil erosion and nutrient runoff.

International Journal for Research in Applied Science & Engineering Technology (IJRASET)

- 4) The continuous flow of water from time to time makes the water penetrate deeply into the soil to get into the root zone.
- 5) Water is delivered only to the section of the field where it's needed but not to the whole field.
- 6) This system is adaptable and can be modified easily to adjust to the changing needs of the water supply to the crop.

IV. CONCLUSION

The system provides with several benefits and can operate with less manpower. The system supplies water only when the moisture in the soil goes below the reference. Due to the direct transfer of water to the roots water conservation takes place and also helps to maintain the moisture to soil ratio at the root zone constant to some extent. Thus the system is efficient and compatible to the changing environment. Also the system saves the water and improves the growth of plants. The other advantage is that the very irrigation levels are regulated with the help of various sensors. The Light Dependent Resistor is used to check the presence of sunlight to change the irrigation levels from time to time. The Temperature sensor is used to check the occurrence of the fire accidents and control them with the help of sprinkler system. An added advantage is that the humidity in the air at the crop level is checked and any increment of the value above the reference level will immediately activate the sprinkler system. It is because the increase in humidity is due to the evaporation of water from the leaves. So when we can retain the soil moisture just by activating the sprinkler system and moisturising the crops.

V. FUTURE SCOPE

Water resources can be utilized efficiently based on various parameters in order to make the agricultural sector more productive to reach the requirements of the demand. In automatic irrigation system the optimum level of the parameters varies in different seasons and at different times. Water is allowed to the field of crops depending upon the particular season. So the irrigation occurs more in summer season, less in rainy season and moderate in winter season. Other parameters such as plant growth at different stages and weather condition can also be taken into consideration to determine the water requirement for the crop. This will improve agriculture leading to economical development of our nation. The irrigation system can also be interfaced with solar energy production module. This can eradicate the problem of lack of electricity in remote areas. In this way the irrigation system can be upgraded to a new level to eradicate the problems of food productivity and to meet the demand.

VI. BIBLIOGRAPHY

<https://en.wikipedia.org/>

<http://www.slideshare.net/>

<http://www.mikroe.com/mikroc/pic/>

<http://www.academia.edu>

<http://www.ijoart.org>

REFERENCES

- [1] Advanced Micro processors and Peripherals by A K Ray and K M Bhurchandi, Tata McGraw Hill Private Limited.
- [2] Micro controllers, Theory and Applications by Ajay V Deshmukh, Tata McGraw Hill Private Limited.
- [3] Soil Moisture and Temperature sensor based intelligent irrigation water pump controlling system using Microcontroller by Swati Devabhaktuni- International Journal of Emerging Trends in Engineering and Development (IJLTET).
- [4] Automatic Drip Irrigation System using PIC Microcontroller by Lincy Luciana- International Journal of Emerging Trends in Engineering and Development (IJLTET).
- [5] Microcontroller based Automatic Plant Irrigation System by G. V. N. Rohit- International Journal of Advancements in Research and Technology (IJOART).
- [6] Automatic irrigation system based on wireless network by Genghuang Yang- IEEE.



10.22214/IJRASET



45.98



IMPACT FACTOR:
7.129



IMPACT FACTOR:
7.429



INTERNATIONAL JOURNAL FOR RESEARCH

IN APPLIED SCIENCE & ENGINEERING TECHNOLOGY

Call : 08813907089  (24*7 Support on Whatsapp)