



# **iJRASET**

International Journal For Research in  
Applied Science and Engineering Technology



---

# **INTERNATIONAL JOURNAL FOR RESEARCH**

IN APPLIED SCIENCE & ENGINEERING TECHNOLOGY

---

**Volume: 8**

**Issue: IV**

**Month of publication: April 2020**

**DOI:**

**[www.ijraset.com](http://www.ijraset.com)**

**Call:  08813907089**

**E-mail ID: [ijraset@gmail.com](mailto:ijraset@gmail.com)**

# White Blood Cell Classification and Counting using Convolutional Neural Network

Dr. Pushpa Ravikumar<sup>1</sup>, Nandini N S<sup>2</sup>

<sup>1</sup>Professor and Head of Department, <sup>2</sup>4<sup>th</sup> Sem M.Tech (Master of Technology), Department of Computer Science and Engineering, Adhichunchanagiri Institute of Technology, Chikkamagaluru, Karnataka - 577102

**Abstract:** Establishing an accurate count and classification of leukocytes commonly known as WBC (white blood cells) is crucial in the assessment and detection of illness of an individual, which involves complications on the immune system that leads to various types of diseases including infections, anemia, leukemia, cancer, AIDS (Acquired Immune Deficiency Syndrome) etc. The two widely used methods to count WBC is with the use of hematology analyzer and manual counting. Currently, in the age of modernization there has been numerous research in the field of image processing incorporated with various segmentation and classification techniques to be able to generate alternatives for WBC classification and counting. However, the accuracy of these existing methods could still be improved. Thus, in this paper we proposed a new method that could segment various types of WBCs: monocytes, lymphocytes, eosinophils, basophils, and neutrophils from a microscopic blood image using HSV (Hue, Saturation, Value) saturation component with blob analysis for segmentation and incorporate CNN (Convolutional Neural Network) for counting which in turn generates more accurate results.

**Keywords:** White blood cells, leukocytes, HSV image processing, blob analysis, convolutional neural network

## I. INTRODUCTION

The immune system is a complex network which consists of cells, tissues and organs that operates simultaneously to protect our body from millions of disease causing bacteria, parasites, and viruses [1]. Leukocytes commonly known as WBC (white blood cells) is the most critical component of our immune system and is categorized into five major subtypes:

- A. Neutrophils(50-70%);
- B. Lymphocytes(25-30%);
- C. Monocytes(3-9%);
- D. Eosinophils(0-5%);
- E. Basophils(0-1%);

Percentage ranges inside the brackets are the common percentage value parallel to the WBC subtype in the blood of a healthy person [2]. Being able to recognize a variation on the type and number of WBCs of a healthy person normally serves as an indicator for various diseases [3]. Excessive monocyte and eosinophil count could be a bacterial infection. An increase in lymphocyte count could be an indication of AIDS (Acquired Immune Deficiency Syndrome). While, an inflated count of neutrophil could suggest cancer [4]. Thus, generating a method which could accurately classify and count the number of WBC as per subclass is becoming a more important issue. Traditionally, WBC classification and counting is being done manually by hematology experts with the use of a microscope. However, due to the complexity of the procedure, the process could be time consuming and is prone to error[5].

Currently, in the advancement of image processing, numerous research and alternative methodologies have been proposed for WBC classification and counting. Although some of these research was able to generate accurate results in WBC counting by utilizing various WBC segmentation techniques such as fuzzy c means and snake [6], color space conversion incorporated with Otsu's algorithm [7], machine vision system [8], and k-means clustering [9] the focus of their research was mainly for determining the number of WBCs. While other research on the other hand focused on devising a methodology that could execute both counting and classifying WBCs as per its subtype [10][11][12] these aforementioned methods can still be improved further to generate a more accurate result. Thus, this research intends to introduce an innovative approach that could simultaneously segment, classify, and count WBCs based on microscopic blood images by utilizing the authors' previous study which could accurately and efficiently segment white blood cells using saturation component of HSV color model and blob analysis. Then, incorporate CNN for classification and counting.

## II. REVIEW OF RELATED LITERATURE

In this chapter we will demonstrate the various methods which involves different image processing techniques being currently implemented for the segmentation, classification and counting of white blood cells. Moreover, we will also be discussing some of the most recent CNN types, specifically the ones that we utilized on our proposed method.

Rosya et al. conducted a search that is able to classify WBC from blood cell images taken from blood smear samples using digital microscope. The researchers utilized Otsu threshold method for segmentation and K-Means clustering method for classification. Based on their research it was concluded that upon execution of k-means clustering to classify and count WBC, the most significant geometry feature is its circularity generating an accuracy of 67% [1].

Alternatively, Gautam et al. proposed a method which utilizes Naïve Bayes classifier and morphological features to classify WBC. The features which the researchers used to train their system were; area, eccentricity, perimeter and circularity. The proposed method was able to generate 80.88% accuracy [11].

In the pursuit to further improve the accuracy of previous papers, Yu et al. proposed a method which uses CNN to automatically classify WBCs. The researchers utilized the network architectures; ResNet50, Inception V3, VGG 16, VGG 19, and Xception. The proposed method was able to generate an accuracy of 88.5% [10].

Recently, the study on the field of CNN showed to be increasingly significant in the advancement of image classification. There have been various types of CNN that was used by previous researchers. However, recent models proved to be more efficient on the improvement of image classification accuracy specifically on tasks such as object detection and segmentation.

Thus, the proposed method in this paper utilized the models AlexNet, ResNet101, and GoogleNet for WBC classification. AlexNet was a winning model in the ILSVRC 2012 (ImageNet Large Scale Visual Recognition Challenge), GoogleNet is the winner of ILSVRC 2014 [13], and ResNet with 152 layers won ILSVRC 2015 [14].

## III. METHODOLOGY

This section describes the procedure undertaken in classifying the white blood cells in a blood smear image. We have collected samples with different qualities from [15] and ALL-IDB database [16][17][18][19] to test the versatility of our method in extracting the white blood cells. The images used were captured under different magnifications ranging from 100-500 and with different resolutions starting from 350x236 up to 2592x1944. The MATLAB Image Processing Toolbox was used to analyze the images. A desktop with Intel i7 processor and 16 GB RAM was used to execute the procedure. An overview for the process of classification is shown in Fig.1.

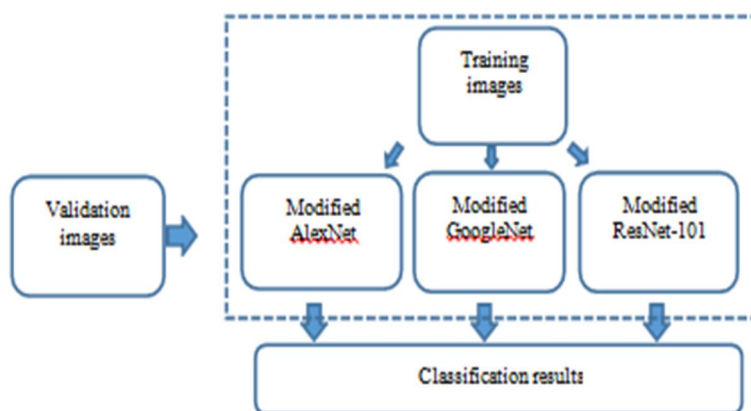


Figure 1. Proposed method for WBC classification

To identify different types of WBC, a technique called transfer learning was used in the study. It is a method wherein a pretrained CNN is modified to classify other types of objects. Utilizing this technique is practical not only in a sense that you can save a lot of time instead of starting from scratch but also because the pretrained CNN such as AlexNet, GoogLe Net and ResNet-101 are proven to be robust and provides high accuracy results. The aforementioned CNN are trained on more than a million images and can classify images into 1000 types. The three CNN were used through transfer learning and retrained with 260 different types of WBC. A sample architecture of CNN is shown in figure 2.

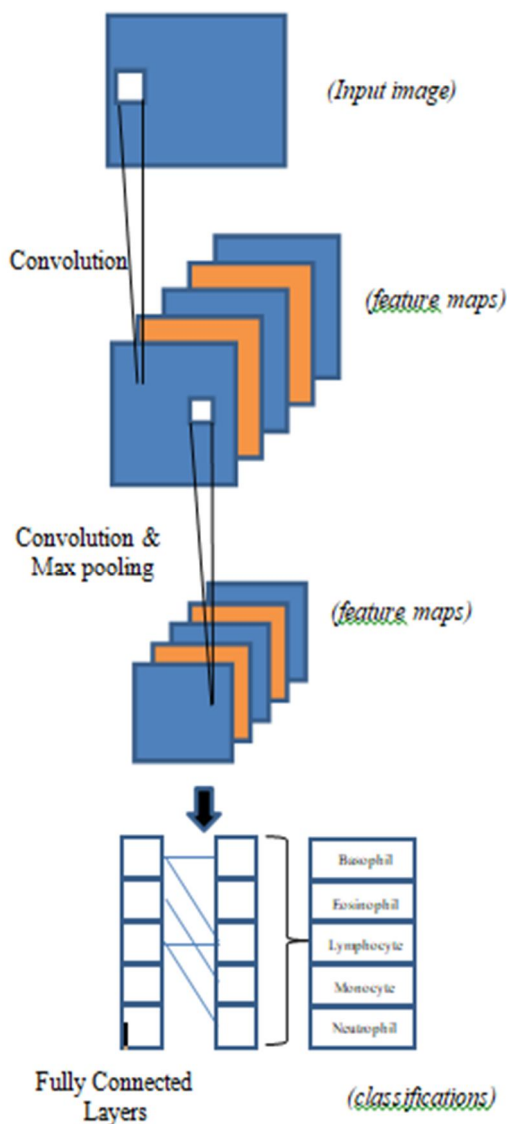


Figure 2. A sample architecture of CNN.

In using CNN, the initial and the most important step before feeding a validation image is making sure that the dimension of the image is same with the requirement of the CNN. AlexNet requires an input size of 227x227 while GoogleNet and ResNet-101 require an input size of 224x224.

#### A. Convolution

A filter image (e.g. line detector) examines every location of the input image to search for a line. If it detects a line, the filter will be activated. It will move one Specificity or True Negative Rate (TNR) represents the percentage of the samples which actually don't belong to the class and identified as such. The formula is shown in (2).

Unit to the right until it reaches the end of the input image. Every location is recorded in an array called the feature map. Locations that have a line will have a high value and those that are not will have a value of zero.

#### B. Max pooling

A type of pooling layer which reduces the size or resolution of the incoming input layer. By doing so, the computation cost is reduced significantly and over fitting is avoided.



### C. Fully Connected Layers

This layer is located at the end of the network. It connects all the activated location in every layer preceding it. Its output is an N dimension vector where N is the number of class that the network is trained to classify—in our study we have 5 classes. Each element in the vector contains the probability that the object belongs to the class. The element with the highest probability is the classification result.

## IV. RESULTS AND DISCUSSION

To assess the performance of the methodology, 178 WBC from 21 blood smear images were used as sample images to determine the accuracy of the proposed method.

The identified and segmented WBC from the sample images were used as validation images and were classified using 3 retrained pretrained CNN namely AlexNet, GoogLeNet and ResNet-101. Fig. 3 shows the sample results from the classification. Their corresponding confusion matrices are shown in table 1, table 3 and table 5 respectively. Furthermore, statistical measures such as sensitivity, specificity and accuracy were taken to evaluate the performance of the classification models. The data from the confusion matrix were categorized into 4 types—True Positive (TP), False Negative, True Negative (TN) and False Positive (FP)—in order to compute for the statistical measures. TP is defined as the number of correctly identified samples as belonging to the class. FN is the number of samples belonging to the class but identified as not. TN indicates the number of correctly identified samples as not belonging to the class. And FP is the number of samples not belonging to the class but identified as belonging.

Sensitivity or True Positive Rate (TPR) represents the percentage of the samples which actually belong to the class and identified as such. The formula is shown in (1).

$$TPR = \frac{TP}{TP + FN} \quad (1)$$

Specificity or True Negative Rate (TNR) represents the percentage of the samples which actually don't belong to the class and identified as such. The formula is shown in (2).

$$TNR = \frac{TN}{TN + FP} \quad (2)$$

Accuracy (ACC) was computed as the ratio of all samples belonging to the class and the total number of samples. The formula is shown in (3).

$$ACC = \frac{TP + TN}{TP + TN + FP + FN} \quad (3)$$

The corresponding statistical measures for AlexNet, GoogLeNet and ResNet-101 are shown in table 2, table 4 and table 6 respectively.

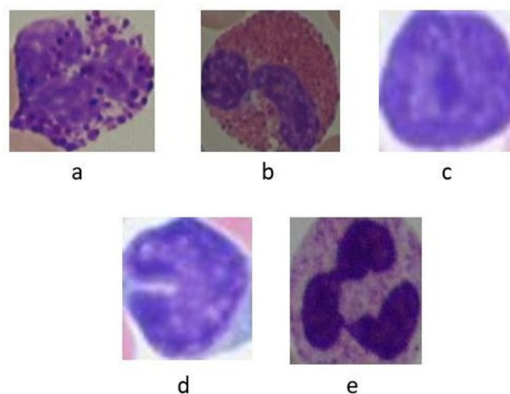


Figure 3. Sample results from the classification of the validation images (a) Basophil [16]-[19] (b) Eosinophil [16]-[19] (c) Lymphocyte [16]-[19] (d) Monocyte [20] (e) Neutrophil [20]

Table I. Confusion matrix alexnet

		PREDICTED				
		Basophil	Eosinophil	Lymphocyte	Monocyte	Neutrophil
ACTUAL	Basophil	2	0	0	0	0
	Eosinophil	0	2	0	0	0
	Lymphocyte	0	0	134	7	0
	Monocyte	0	0	1	3	0
	Neutrophil	0	0	0	7	22

Table II. Statistical Measures For Alexnet

Classification	Sensitivity (%)	Specificity (%)	Accuracy (%)
Basophil	100	100	100
Eosinophil	100	100	100
Lymphocyte	95.04	97.30	95.51
Monocyte	75	91.93	91.57
Neutrophil	75.86	100	96.07

Table III. Confusion Matrix Googlenet

		PREDICTED				
		Basophil	Eosinophil	Lymphocyte	Monocyte	Neutrophil
ACTUAL	Basophil	2	0	0	0	0
	Eosinophil	0	1	0	0	1
	Lymphocyte	0	0	135	2	4
	Monocyte	0	0	2	0	2
	Neutrophil	0	0	0	0	29

Table IV. Statistical Measures of Googlenet

Classification	Sensitivity (%)	Specificity (%)	Accuracy (%)
Basophil	100	100	100
Eosinophil	50	100	99.44
Lymphocyte	95.74	94.59	95.51
Monocyte	0	98.85	96.63
Neutrophil	100	95.30	96.07

Table V. Confusion Matrix Resnet-101

		PREDICTED				
		Basophil	Eosinophil	Lymphocyte	Monocyte	Neutrophil
ACTUAL	Basophil	2	0	0	0	0
	Eosinophil	1	0	0	0	1
	Lymphocyte	0	0	141	0	0
	Monocyte	0	0	2	2	0
	Neutrophil	0	0	6	1	22

Table 6. Statistical Measures for Resnet-101

Classification	Sensitivity (%)	Specificity (%)	Accuracy (%)
Basophil	100	99.43	99.44
Eosinophil	0	100	98.88
Lymphocyte	100	78.38	95.51
Monocyte	50	99.43	98.31
Neutrophil	75.86	99.33	95.51

## V. CONCLUSION

This research was able to classify and count WBCs based on microscopic blood images by utilizing CNN. Moreover, upon comparison of the three CNN models (Alexnet, GoogleNet, and ResNet-101) it was observed that AlexNet performed best on the task of classification and counting based on 21 microscopic blood sample images as compared to GoogleNet and ResNet-101, generating an overall sensitivity of 89.18%, specificity of 97.85%, and accuracy of 96.63%.

## VI. ACKNOWLEDGMENT

This paper was supported by DOST (Department of Science and Technology) under ERDT (Engineering Research and Development for Technology) scholarship program.

## REFERENCES

- [1] T. Rosyadi, A. Arif, Nopriadi, B. Achmad and Faridah, "Classification of Leukocyte Images Using K-Means Clustering Based on Geometry Features," in 6th International Annual Engineering Seminar (InAES), Yogyakarta, Indonesia, 2016.
- [2] N. M. Salem, "Segmentation of White Blood Cells from Microscopic Images using K-means clustering," in 2014 31st National Radio Science Conference (NRSC), 2014.
- [3] A. Gautam and H. Bhaduria, "White Blood Nucleus Extraction Using K-Mean Clustering and Mathematical Morphing," in 5th International Conference-Confluence the Next Generation Information Technology Summit (Confluence), 2014.
- [4] O. Ryabchikov, A. Ramoji, T. Bocklitz, M. Foerster, S. Hagel, C. Kroegel, M. Bauer, U. Neugebauer and J. Popp, "Leukocyte subtypes classification by means of image processing," Proceedings of the Federal Conference on Computer Science and Information Systems, vol. 8, no. 2300-5963, pp. 309-316, 2016.
- [5] N. Sinha and A. G. Ramakrishnan, "Automation of differential blood count," TENCON 2003. Conference on Convergent Technologies for Asia-Pacific Region, vol. 2, pp. 547-551, 2003.
- [6] D.-C. Huang and K.-D. Hung, "Leukocyte Nucleus Segmentation and Recognition in Color Blood-Smear Images," in IEEE International Instrumentation and Measurement Technology, 2012.
- [7] Puttamadegowda and Prasannakumar, "White Blood cell segmentation using Fuzzy C means and snake," in 2016 International Conference on Computation System and Information Technology for Sustainable Solutions (CSITSS), 2016.
- [8] R. Ahasan, A. U. Ratul and A. S. M. Bakibillah, "White Blood Cells Nucleus Segmentation from Microscopic Images of strained peripheral blood film during Leukemia and Normal Condition," in 5th International Conference on Informatics, Electronics and Vision (ICIEV), 2016.
- [9] Z. K. K. Alreza and A. Karimian, "Design a new algorithm to count white blood cells for classification Leukemic Blood Image using machine vision system," in International Conference on Computer and Knowledge Engineering (ICCKE 2016), 2016.
- [10] W. Yu, C. Yang, L. Zhang, H. Shen, Y. Xia and J. Sha, "Automatic Classification of Leukocytes Using Deep Neural Network," in IEEE 12th International Conference on ASIC (ASICON), 2017.
- [11] A. Gautam, P. Singh, B. Raman and H. Bhaduria, "Automatic Classification of Leukocytes using Morphological Features and Naive Bayes Classifier," in IEEE Region 10 Conference (TENCON), 2016.
- [12] Understanding the Immune System, NIH Publication No. 03-5423, 2003
- [13] L. Xiao, Q. Yan and S. Deng, "Scene Classification with Improved AlexNet Model," in 12th International Conference on Intelligent Systems and Knowledge Engineering (ISKE), 2017.
- [14] A. Filonenko, L. Kurniaggoro and K.-H. Jo, "Comparative Study of Modern Convolutional Neural Networks for Smoke Detection on Image Data," in 10th International Conference on Human Systems Interaction, 2017.
- [15] Z. Pan, "enjoypath," University of Colorado, 27 July 2015. [Online]. Available: [www.enjoypath.com](http://www.enjoypath.com). [Accessed 10 January 2018].
- [16] R. Donida Labati, V. Piuri, F. Scotti, "ALL-IDB: the acute lymphoblastic leukemia image database for image processing", in Proc. of the 2011 IEEE Int. Conf. on Image Processing (ICIP 2011), Brussels, Belgium, pp. 2045-2048, September 11-14, 2011. ISBN: 978-1-4577-1302-6. [DOI:10.1109/ICIP.2011.6115881]
- [17] F. Scotti, "Robust Segmentation and Measurements Techniques of White Cells in Blood Microscope Images", in Proc. of the 2006 IEEE Instrumentation and Measurement Technology Conf. (IMTC2006), Sorrento, Italy, pp. 43-48, April 24-27, 2006. ISSN: 1091-5281. [DOI: 10.1109/IMTC.2006.328170]
- [18] F. Scotti, "Automatic morphological analysis for acute leukemia identification in peripheral blood microscope images", in Proc. of the 2005 IEEE Int. Conf. on Computational Intelligence for Measurement Systems and Applications (CIMSAS 2005), Giardini Naxos - Taormina, Italy, pp. 96-101, July 20-22, 2005 [DOI: 10.1109/CIMSAS.2005.1522835]
- [19] V. Piuri, F. Scotti, "Morphological classification of blood leucocytes by microscope images", in Proc. of the 2004 IEEE Int. Conf. on Computational Intelligence for Measurement Systems and Applications (CIMSAS 2004), Boston, MA, USA, pp. 103-108, July 12-14, 2004. ISBN: 0-7803-8341-9. [DOI: 10.1109/CIMSAS.2004.1397242]
- [20] Department of Pathology, Creighton University Medical Center, Omaha, NE and Z. Pan, "Enjoy Pathology," 27 July 2015. [Online]. Available: <http://www.enjoypath.com/H/hp-018/hp-018.htm>. [Accessed 10 January 2018]





10.22214/IJRASET



45.98



IMPACT FACTOR:  
7.129



IMPACT FACTOR:  
7.429



# INTERNATIONAL JOURNAL FOR RESEARCH

IN APPLIED SCIENCE & ENGINEERING TECHNOLOGY

Call : 08813907089  (24\*7 Support on Whatsapp)