



iJRASET

International Journal For Research in
Applied Science and Engineering Technology



INTERNATIONAL JOURNAL FOR RESEARCH

IN APPLIED SCIENCE & ENGINEERING TECHNOLOGY

Volume: 8 Issue: VIII Month of publication: August 2020

DOI: <https://doi.org/10.22214/ijraset.2020.30910>

www.ijraset.com

Call:  08813907089

E-mail ID: ijraset@gmail.com

One Platform Many Services

Ms. Pooja Singhal¹, Abhishek Vashishth², Anand Ranjan³, Ankit Pandey⁴, Ashish Kumar⁵

¹Asstt. Professor, ^{2, 3, 4, 5}Students, Dept. Of Computer Science, Inderprastha Engineering College, Dr. A.P.J. Abdul Kalam Technical University, India.

Abstract: Everyone is having a busy schedule in their life and taking some time off from their schedule to do other task such as household works or anything apart from spending time with their family or self. This is a very common problem that is faced by most of the people around, so they search over internet to find someone to help them in these kinds of jobs. MAPSERVICE is an online platform where people will find the details of professional service providers related to their work available on one website. IT helps people to hire trusted professionals for all kind of their service requirements. IT provides housekeeping services which consist of Electricians, Plumbers, Carpenters, Cleaning, Pest Control & many more. It also provides personal care services which include saloon, beauty & spa, mobile and other appliance repairs, servicing of electrical appliances such as ACs, washing machines, printers and many more. It also provides services in many different sectors some of them are yoga training, wedding photography, interior designing and many more. Mapservice is a platform which creates employment for unemployed skilled professionals, creates an opportunities to kick start some small scale business and resolves the issue of unemployment in the country.

I. INTRODUCTION

Now days everyone is busy in their life and no one is having time to do their small work or household work. Due to the lack of time people tend to look over the internet to find someone who can be helpful to them. For this purpose only there are many different service providers available but how would they come to know that which service provider is good for them or how would they get the contact number of the service provider. For resolving these problems, MAPSERVICE, an online platform is designed. The MAPSERVICE is an online platform where people will find all the details of professional service providers related to their work is available on one website, even if any professional is willing to provide services through MAPSERVICE than also it is possible which can be done by only following simple steps of signup.

MAPSERVICE also provide employment to unemployed skilled professionals and resolve the issue of unemployment which will decrease the unemployment rate and increase GDP of the country.

It resolves the dilemma of searching over websites for professionals as MAPSERVICE provide one platform where all the details are available to everyone. The remaining of this paper is organized as follows, Section 2 presents the background and related works, Section 3 presents the proposed system and the implementation of each block of the system and requirements with modules and their functionalities, the simulation of results are shown in section 4 and in the section 5 conclusions are presented and in the last section references is present.

II. BACKGROUND AND RELATED WORK

From the administrator's perspective, there are significant transparency, accuracy and efficiency gains to be had. They will now be able to view and monitor the state of the website and database near real-time, as well as have instant access to a complete and permanent transactional history for each user and service provider. This chapter aims to introduce the theoretical background that has been accumulated around the web development technologies used and to review the works that have been performed prior the current master paper in regard to the study object. The MAPSERVICE is an online platform where people will find all the details of professional service providers related to their work is available on one website, even if any professional is willing to provide services through MAPSERVICE than also it is possible which can be done by only following simple steps of signup.

One such system which is working is UrbanClap or now known as Urban Company. UrbanClap / Urban Company is recognized as the fastest-growing startup in India. UrbanClap / Urban Company is a mobile marketplace for local services. They help their customers to hire trusted professionals for all their service requirements. They provide housekeeping services which includes Cleaning services, Plumbers, Carpenters, Electricians for electrical work, and Pest & Animal Control. They also provide services such as beauty, spa & sauna, phone and other appliance repairs etc. They provide services in various different fields like a plumbing job to improving your fitness through yoga to learning to play the guitar to decorating your house to getting candid photo shots of your wedding clicked.

III. PROPOSED SYSTEM

As we already mentioned about MAPSERVICE . It is an online platform for basic as well as essential needs of customer that is possible and can be done by only following simple steps of signup.

These are the following modules proposed apart from the existing model.

- 1) QR Code Generation
- 2) Chat Box Implementation
- 3) Secure & Fast Login using QR code
- 4) Location Based Services

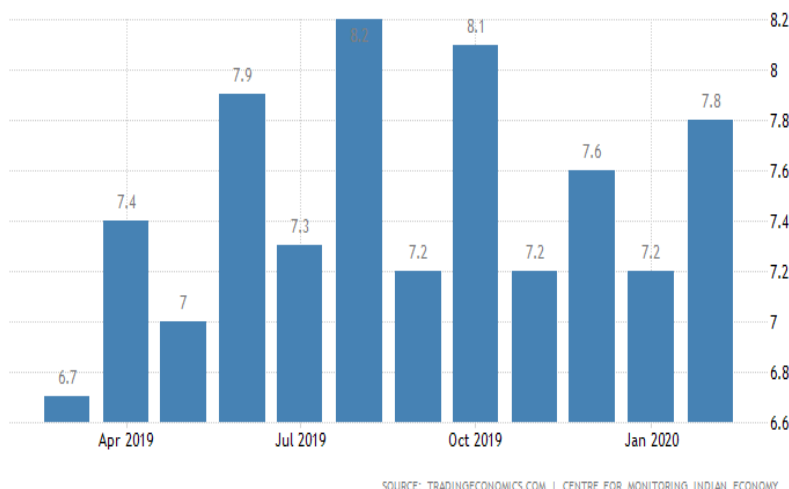


Fig.1. India Unemployment Rate Graph

These are the following benefits proposed using Mapservice :

- a) Growth in employment.
- b) Fast and secure login using QR code.
- c) Communication between user and service professional via chat box.
- d) Create Freelancing for many professionals.
- e) Reviews and user experiences
- f) User satisfaction.
- g) Grievances resolving through feedback methods.

A. Modules and their Functionalities

- 1) *Login / Signup Page:* It will allow the users (customers) and service providers both to login or signup using their credentials and allow them to access the resources accordingly.
- 2) *Administrator Page:* It will allow the administrator to have the control over the signing up and placing order details and easily can monitor over most of the transaction on the platform and database.
- 3) *Profile:* Users can see their profile and can edit them.
- 4) *Order History:* Users and service providers can check their past order history and upcoming orders as well as ongoing orders.
- 5) *Chat Box:* It is implemented for the communication between user and service providers.
- 6) *Data Encryption:* Everything from password to chat messages will get encrypted and only user and service providers are liable
- 7) *E-Bill Generation:* Bill/invoices generated will be sent via emails to customers which will eventually reduce the paperwork.
- 8) *Secure Online Payment:* Payment Gateway will be implemented for online transactions.
- 9) *QR Code Implementation:* Login using QR codes creates a fast and more secure way.

IV. ACTIVITY FLOW DIAGRAM

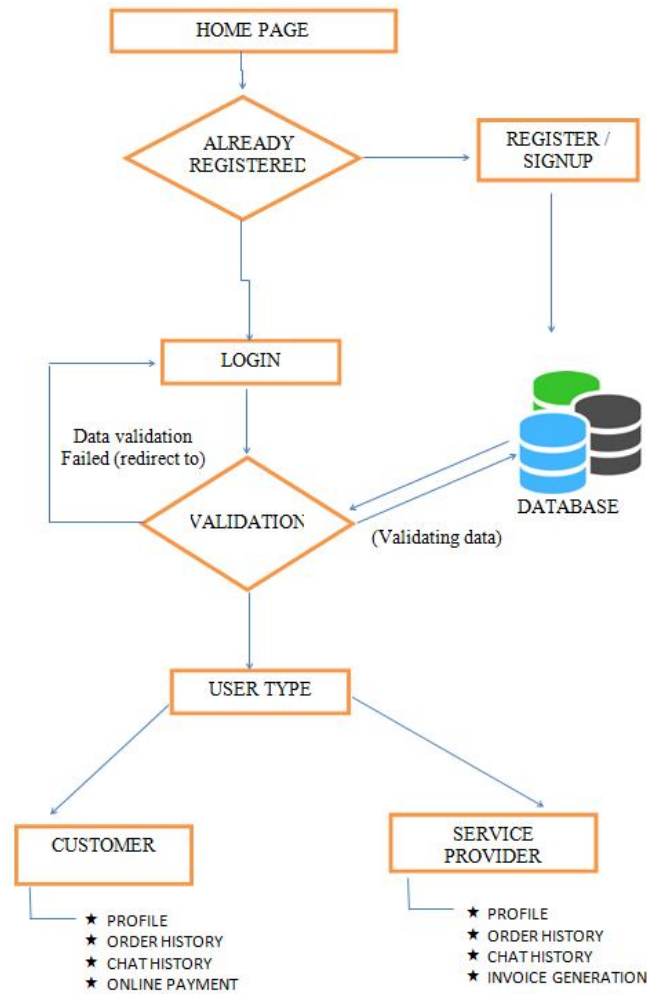


Fig. 2 Flowchart of the system

V. SEQUENCE DIAGRAM

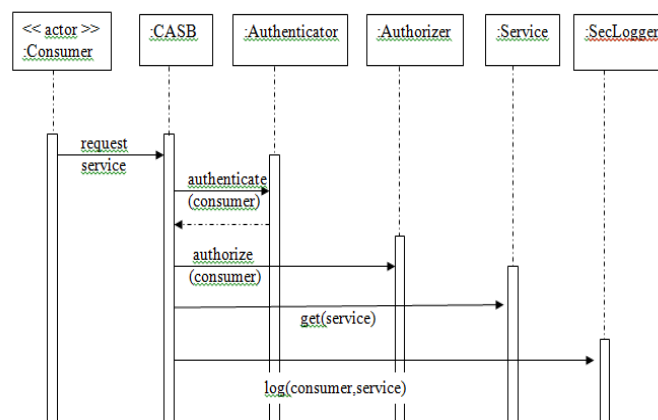


Fig.3 Sequence Diagram of the system

VI. NONFUNCTIONAL REQUIREMENTS

A. Performance Requirements

It defines how well the system performs certain functions under specific conditions. It performs well under high load and has error handling methods to provide smooth functioning without any hassle.

B. Reliability

The data presented on the website is genuine and true, and 100% verified by the verification department of the organization.

C. Availability

The website is available on each operation system and devices with web browsers as the website is present over internet. User from different location can access the website from anywhere and anytime through web browsers.

D. Security

The website is secure using encryption methods and all the transactions made over the website is encrypted, the security is upgraded using QR code.

E. Maintainability

This website is simple to maintain with the admin panel which controls most of the information which are recorded in the database.

VII.DFD DIAGRAM

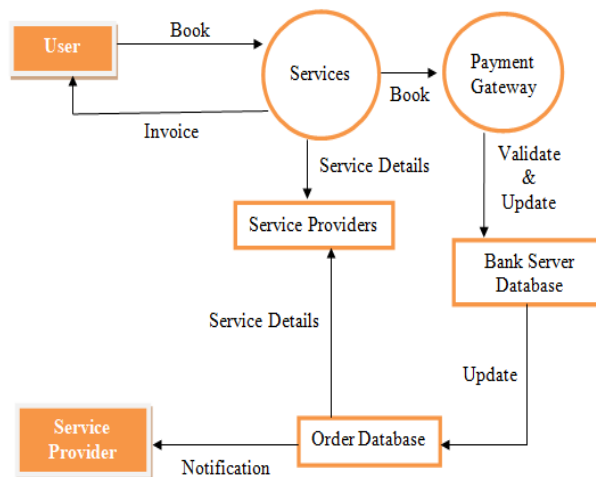
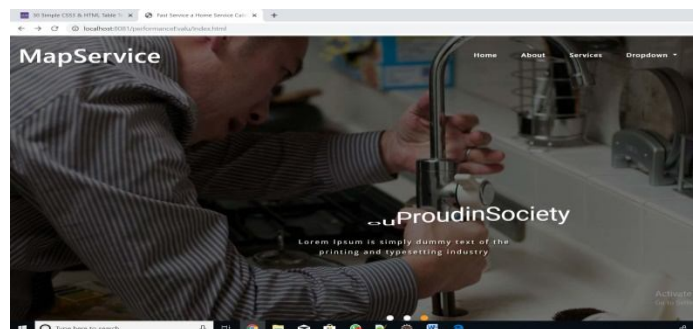


Fig.4 DFD Diagram of the system

VIII. RESULTS

All user interfaces and output screens



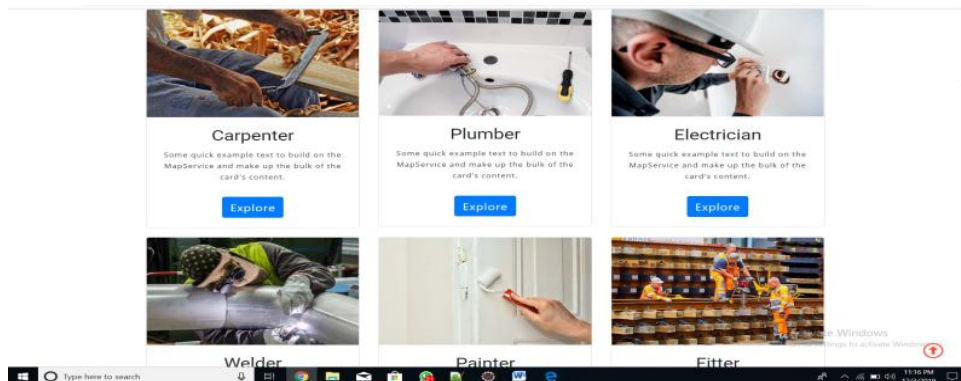


Fig. 5.1 This is the home page of the website.

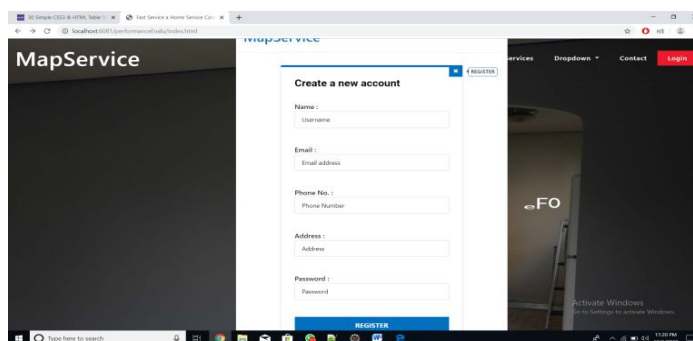


Fig.5.2 This is the signup page or form of the website.

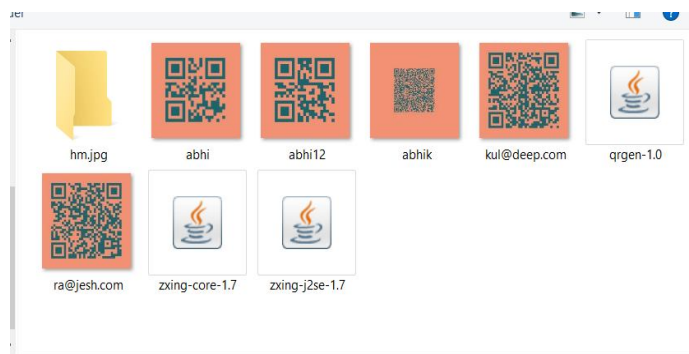


Fig. 5.3 This is the QR code generated after signing up on the website.

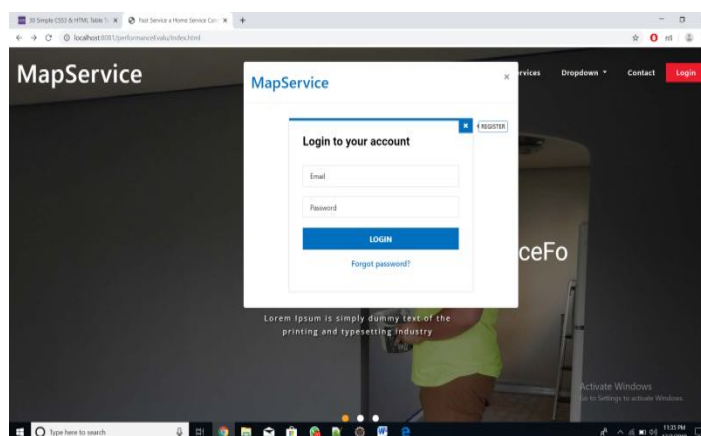


Fig. 5.4 This is the login page or form of the website.

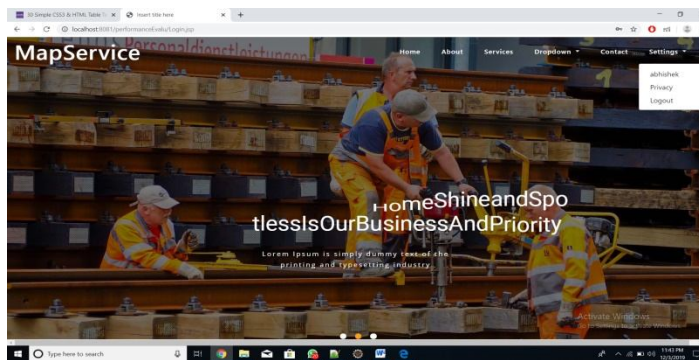


Fig. 5.5 This is the home page after user login.

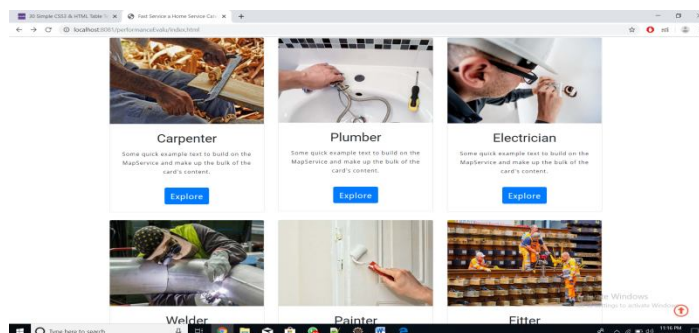


Fig. 5.6 These are the services provided.

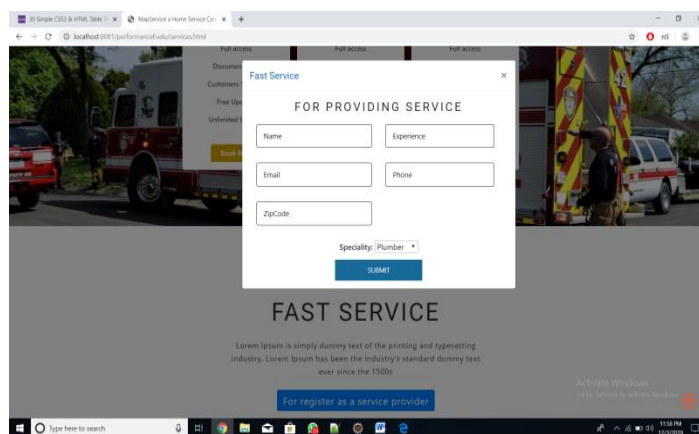


Fig. 5.7 This is for service provider registration.

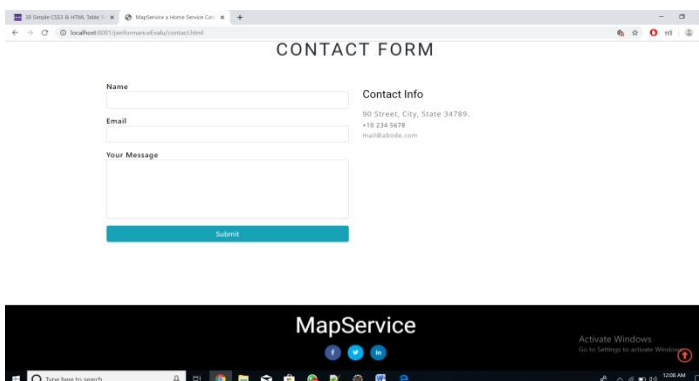


Fig. 5.8 Website's contact page.

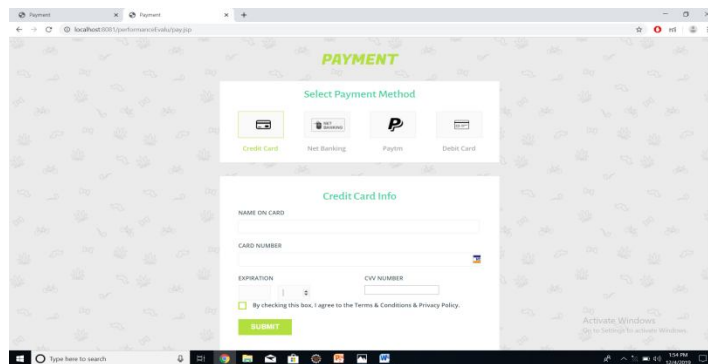


Fig. 5.9 This is payment gateway page of website.

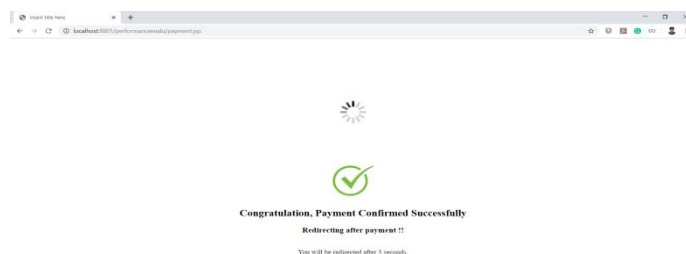


Fig. 5.10 This is the successful payment page.

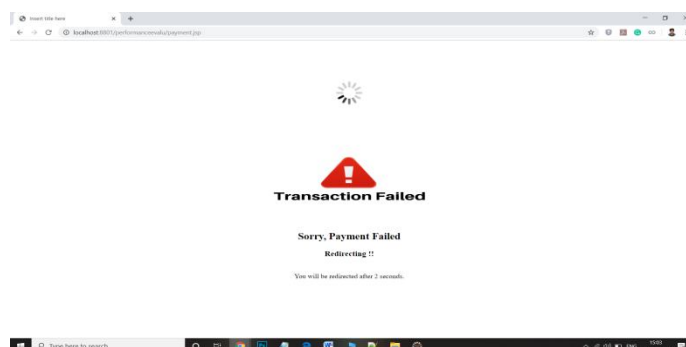


Fig. 5.11 This is the failed payment page.

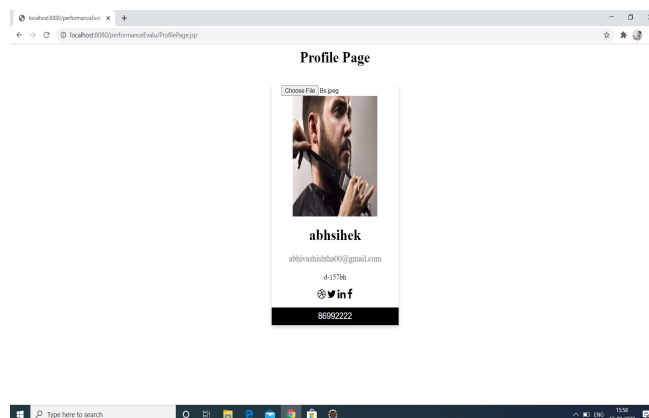


Fig. 5.12 This is the profile page of the website.

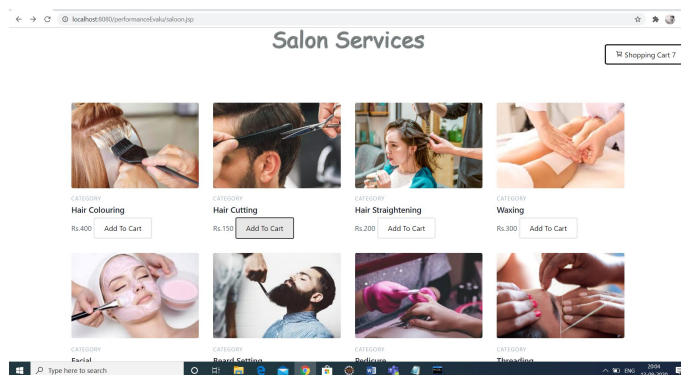


Fig. 5.13 This is the salon service page under saloon category.

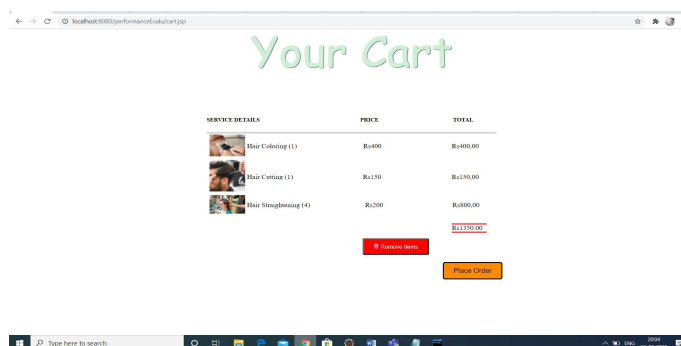


Fig. 5.14 This is the cart page of the website.

IX. CONCLUSIONS

The MAPSERVICE is an online platform, a place where people will find solutions to the entire problems related to households, office and online work. All the necessary details of professionals service providers related to their work is available on one website, even if any professional is willing to provide their services to users through MAPSERVICE platform, than also it is possible which can be done by only following simple steps of signup as a service provider.

It provides employment to unemployed skilled professionals and resolves the issue of unemployment in the country. It creates freelancing for skilled professionals. It helps to use resources at a reasonable cost. It creates opportunities for the professionals to earn extra apart from their regular commitments. It helps to resolve the dilemma for searching on too many websites for professionals and thus will save time and efforts. It creates a cycle of earnings for small scaled professionals. It provides hassle free, secure and fast login using QR code. It provides a direct interaction between both the service provider and user through chat box. It provides users to share their experience and reviews about the professional representative which helps the other users for finding a better match for their work.

REFERENCES

- [1] Java - General Java mother site @ <https://www.oracle.com/technetwork/java/index.html>.
- [2] Java Documentation- <https://docs.oracle.com/e/java/index.html>.
- [3] HTML & CSS - Online Tutorials and Resources W3School HTML/CSS Tutorials, References and Examples @ <https://www.w3schools.com/tags/default.asp>. (W3School is not related to W3C).
- [4] JavaScript and jQuery - Online Tutorials and Resources W3School JavaScript Tutorials, References and Examples @ https://www.w3schools.com/js/js_where.asp.
- [5] jQuery Tutorial - @ <https://www.tutorialspoint.com/jquery/jquery-plugins.htm>.
- [6] MySQL -MySQL Mother Site @ www.mysql.com.MySQL 5.7 "Reference Manual" @ <http://dev.mysql.com/doc/>.
- [7] Unemployment Rate - <https://tradingeconomics.com/india/unemployment-rate>



10.22214/IJRASET



45.98



IMPACT FACTOR:
7.129



IMPACT FACTOR:
7.429



INTERNATIONAL JOURNAL FOR RESEARCH

IN APPLIED SCIENCE & ENGINEERING TECHNOLOGY

Call : 08813907089  (24*7 Support on Whatsapp)