



# **iJRASET**

International Journal For Research in  
Applied Science and Engineering Technology



---

# **INTERNATIONAL JOURNAL FOR RESEARCH**

IN APPLIED SCIENCE & ENGINEERING TECHNOLOGY

---

**Volume: 8      Issue: IX      Month of publication: September 2020**

**DOI: <https://doi.org/10.22214/ijraset.2020.31599>**

**[www.ijraset.com](http://www.ijraset.com)**

**Call:  08813907089**

**E-mail ID: [ijraset@gmail.com](mailto:ijraset@gmail.com)**

# Design and Analysis of Exhaust Valve of an IC Engine by using Finite Element Analysis

D. Ravichandran<sup>1</sup>, M. Dharun Sankar<sup>2</sup>, M. Gokul Rokith<sup>3</sup>, R. Hariharan<sup>4</sup>, S. Kamesh<sup>5</sup>

<sup>1</sup>Assistant Professor, Department of Mechanical Engineering, Erode, Tamilnadu, India

<sup>2, 3, 4, 5</sup>UG Scholar, Department of Mechanical Engineering, Erode, Tamilnadu, India

**Abstract:** Engine is the heart of automobiles and valve mechanism is the heart of engine. There are two types of the valves are used in internal combustion engines which are intake valve and exhaust valve. Intake and exhaust valves are used to control the flow of intake fresh charge and Exhaust flue gases alternatively in Engine. They are used to seal the working space inside cylinder against the manifold and they open and close by means of what is known as the Valve gear mechanism. Exhaust valve work well in engines because the pressure inside the combustion chamber pushes valve against the seat, sealing the chamber and preventing leaks during this cycle exhaust valves are exposed to high temperature and pressure which will affect the life and performance of the engine. The aim of the project is to design an exhaust valve with a suitable material along with the three different fillet radii for a four-stroke diesel engine by using Finite Element Analysis. In exhaust valve we have considered Aluminium 7068 alloy, Silicon carbide reinforced Zirconium di-boride and Carbon fiber composite material. In this we observe the results of existing exhaust valve's stress, strain and total deformation values are compared to the modified exhaust valve design are shows tremendous change in stress, strain and total deformation of the composite material.

**Keywords:** Exhaust Valve design, Composite Materials, Fatigue.

## I. INTRODUCTION

An exhaust valve is termed as an essential component of an Internal Combustion engine as it provides a path to expel out the exhaust gases generated after the combustion of the fuel in the combustion chamber. Exhaust valve used to seal the working space inside the cylinder against the manifolds and is opened and closed employing what is known as the valve train mechanism. Usually, the exhaust valve is made of steel valve material (steel alloy) to make it less weight and thermal conductivity. But the steel alloy valves have less strength and a high coefficient of thermal expansion, thus making it not suitable for the high-temperature experience. Aluminium 7068 alloy, Silicon carbide reinforced Zirconium diboride and Carbon fiber composite materials are used as an alternative for steel alloy valves to overcome the problems faced. Composite materials, when compared to conventional steel alloys, have good strength, thermal conductivity, and less weight density. Catia v5 software is decided to use for 3d drafting and Ansys 15.0 is decided to use for analysis.

## II. ENGINE CONSIDERATION

Engine consideration -- TVS VICTOR 4 stroke petrol engine

Bore x Stroke (D X L) = 53.5 x 48.8 (mm)

Engine displacement (CC) = 109.7 cc

Valve seat angle = 45°

Gas Velocity, vg = 2100m/min

Overall Length of valve = 68.55 cm,

Engine speed, Ns = 7500 rpm,

Max. Gas Pressure, P max = 6.0 N/mm<sup>2</sup>

Mean Piston Speed, N = 275 m/min,

Exhaust valve Temp, T = 750°C

Allowable stress  $\sigma$  = 57.5 Mpa

K1 = 0.42

Exhaust Valve diameter d<sub>1</sub> = 18.2 mm

### III. FORCE CALCULATIONS

Force due to gas pressure ( $F_G$ ) When valve opens

$$F_G = \frac{\pi}{4} d_c^2 p_c$$

$$= \frac{\pi}{4} (25)^2 \times 0.45$$

$$F_G = 220.89 \text{ N}$$

Inertia force when valve moves up ( $F_A$ )

$$F_A = m \cdot a^2$$

Sub, valve acceleration

$$a^2 = \pi^2 \cdot \omega^2 \cdot h / 2\theta L^2$$

Angle of lift

$$\text{Sub, } \theta_L = \frac{1}{2} \theta_{Cam}$$

$$F_A = 2 \cdot m \cdot \omega^2 \cdot h / \theta_{Cam}$$

$$F_A = 2 \times 0.213 \times \pi^2 \times 60.21^2 \times (6.93 \times 10^{-3}) / 2.53$$

$$F_A = 15.31 \text{ N}$$

Where,  $\theta_L$  = Crankshaft speed

Cam shaft speed,  $\omega = 60.21 \text{ rad/sec}$  (for four stroke)

Cam angle during valve lifting  $\theta_{Cam} = 145^\circ$  or 2.53 rad.

The initial spring force ( $F_I$ ) to hold the valve in its seat against the suction or negative pressure inside the cylinder

$$F_I = \frac{\pi}{4} \cdot d_s^2 \cdot P_s$$

Where, Maximum suction pressure  $P_s = 0.025 \text{ mpa}$

$$F_I = \frac{\pi}{4} \cdot 25^2 \cdot 0.025$$

$$F_I = 12.217 \text{ N}$$

Total force acting on valve face ( $F_T$ ) is calculated as

$$F_T = F_G + F_A + F_I$$

$$= 220.59 \text{ N} + 15.31 + 12.27$$

$$F_T = 248.17 \text{ N}$$

Tensile force generated due to inertia

$$F_A = 15.31 \text{ N}$$

Compressive force due to gas pressure and Initial spring force ( $F_G + F_I$ )

$$= 220.89 + 12.22$$

$$= 233.11 \text{ N}$$

### IV. DIMENSIONS AND DESIGN OF EXHAUST VALVE

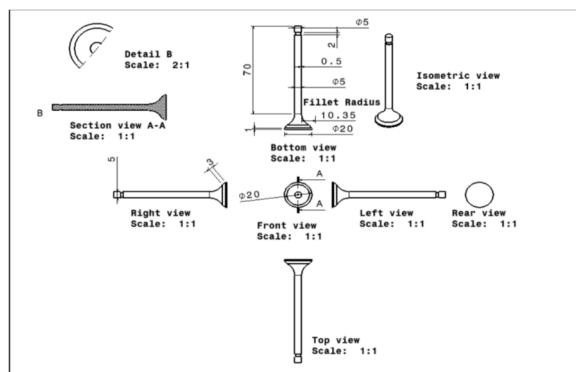


Fig.1. Existing exhaust valve design of 10.35 mm fillet radius

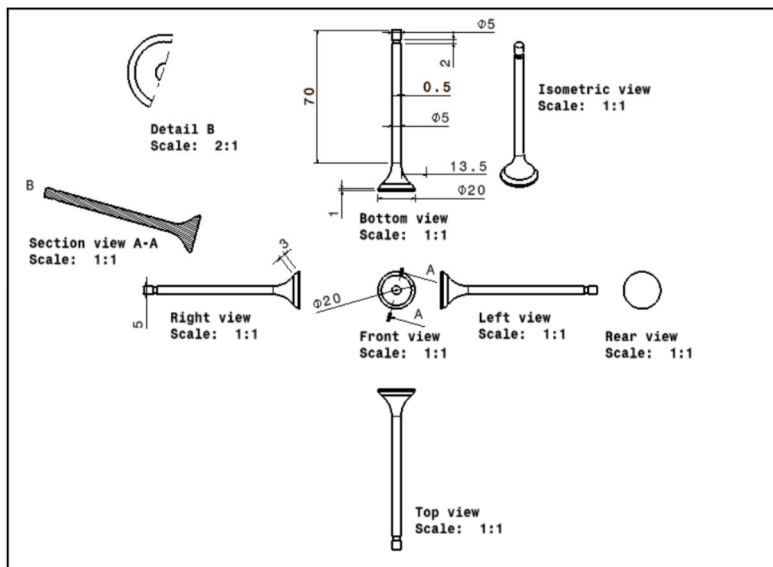


Fig.2. Optimized exhaust valve design of 13.5 mm fillet radius

### V. MATERIAL SELECTION

For structural design it is important to consider all materials appropriate to the application. For the design of this multipurpose machine, the material should be cost effective and capable of providing the required properties of each application.

For the frame, the material selection was completed using stress analysis, strain analysis and displacement analysis based on the required stresses that will be applied by lift and drag forces.

Table.1. Material properties

Material	Density (kg/m)	Youngs Modulus (gpa)	Poisson ratio	Tensile strength (mpa)
21-4N	7750	193	0.25	700
Aluminium 7068 Alloy	2850	73.1	0.23	710
SiC ZrB <sub>2</sub>	2060	486	0.33	1070
Carbon Reinforced Carbon fibre	2000	228	0.33	36006

### VI. STRESS RESULTS FOR EXHAUST VALVE DESIGN OF FILLET RADIUS 10.35 mm

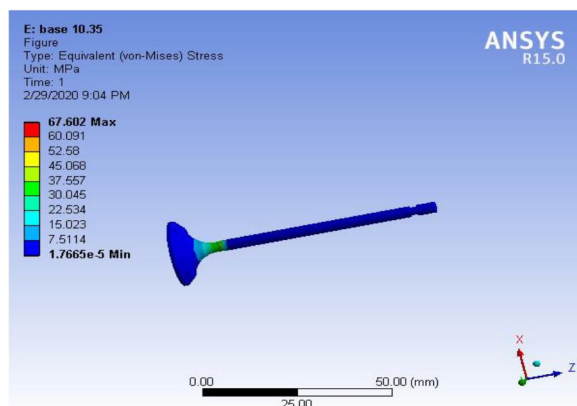


Fig.3. Von-mises stress

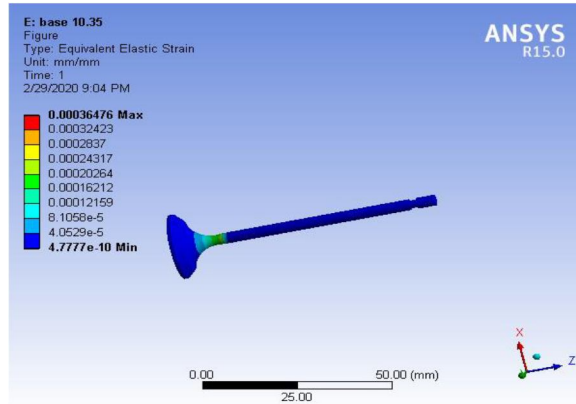


Fig.4. Elastic strain

From the obtained solution of basic 10.35 mm fillet radius valve the maximum stress is concentrated at valve face and stem junction. The maximum stress is 67.602 Mpa at the fillet section which could be optimized by selecting various fillet radii, the fillet radius below the existing radii shows huge stress and hence the fillet radius above the existing radius is selected. Then maximum fillet radius is constrained to 14.5 mm, because due to valve seat and size restriction. More over the stresses above the 14.5 mm fillet radius are large and are neglected. So, the fillet radius between 10.35 mm and 14.5 mm are selected.

Table.2. Results based on various fillet radii.

Fillet radius (mm)	Max stress (Mpa)	Max strain	Max deformation (mm)
10.35 (Current)	67.02	0.00036476	0.1135
12.5 (Optimized)	58.356	0.00032028	0.1104
13.5 (Optimized)	50.003	0.00028086	0.11092

From the above data we could observe that the stress value is least for the fillet radius 13.5 mm. Hereby we conclude that the fillet radius 13.5 mm is suitable for exhaust valve design, for longer life of the valve. The fillet radius 13.5 mm is chosen to carry out further design and analysis of the exhaust valve using different composite materials to choose the best composite material.

## VII. STRESS RESULTS

### A. For Aluminium 7068 Alloy with 13.5 mm Fillet Radius

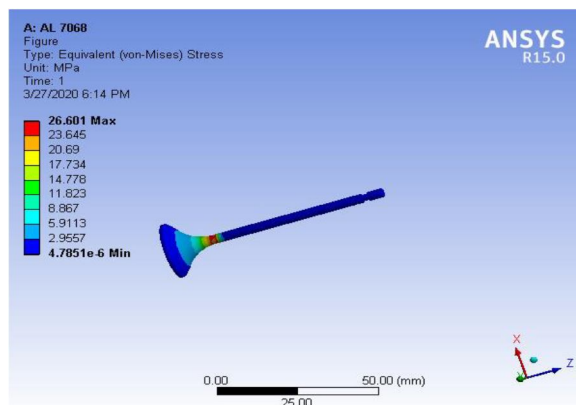


Fig.5. Von-mises stress

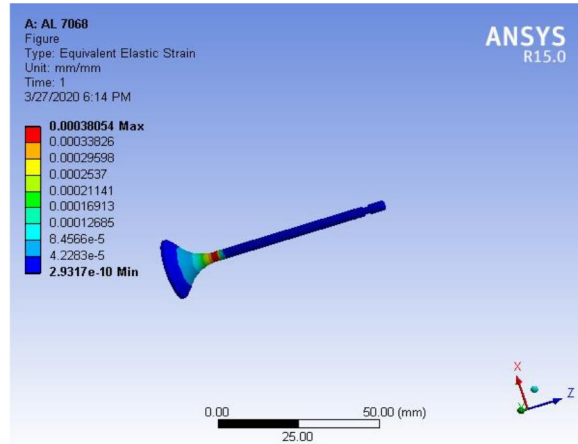


Fig.6. Elastic strain

*B. For Silicon Carbide Reinforced Zirconium di-boride with 13.5 mm fillet Radius*

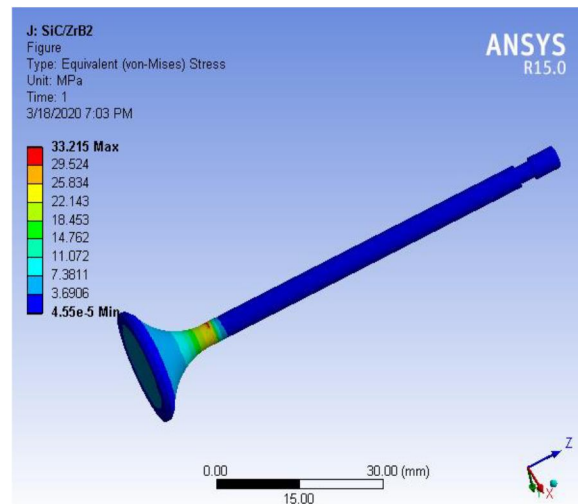


Fig.7. Von-mises stress

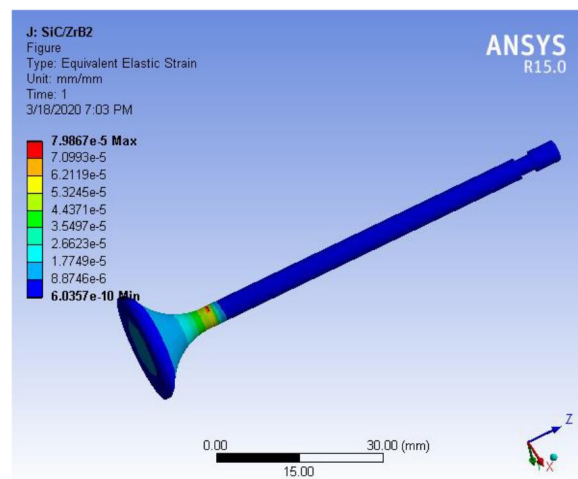


Fig.8. Elastic strain

C. For Carbon Reinforced Carbon fibre with 13.5 mm Fillet Radius

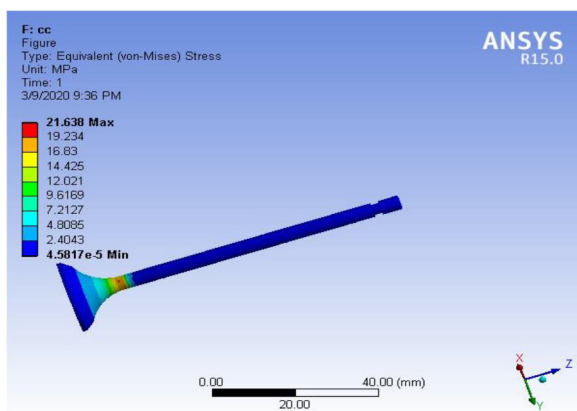


Fig.9. Von-mises stress

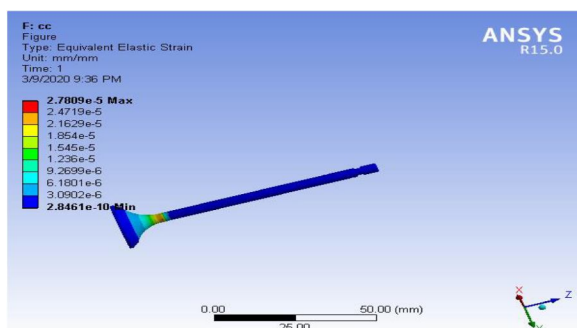


Fig.10. Elastic strain

**VIII. COMPARISON OF STRESS**

Table.3. Stress results

Material	Max stress (mpa)	Max strain	Max deformation (mm)
21-4N	50.003	0.00028086	0.11092
Aluminium 7068 Alloy	26.601	0.00038054	0.11266
SiC ZrB <sub>2</sub>	33.215	0.00007986	0.10108
Carbon Reinforced Carbon fibre	21.837	0.00003293	0.11071

**IX. RESULT & DISCUSSION**

Table.4. Percentage of reduction in stress

MATERIAL	PERCENTAGE OF REDUCTION IN STRESS (%)
Aluminium 7068 alloy	46.8
SiC ZrB <sub>2</sub>	33.5
Carbon Reinforced Carbon fibre	56.3

From the above table values we can observe that the least stress value is in Carbon reinforced carbon fiber, so conclude that carbon reinforced will be the best composite material for exhaust valve.

## X. CONCLUSION

The Automobile industries are requiring less weight and high tensile materials in these days, so we have gone with alternative materials for automobile parts. We had chosen an exhaust valve of an internal combustion engine for further alteration which is light in weight and improve performance of the engine. We had considered the exhaust valve design with 12.5-mm & 13.5-mm fillet radius along with three composite materials. Exhaust valve which is having 13.5 mm fillet radius gives a good result when applying the load. By analyzing the 13.5 mm fillet radius design with different composite materials (Aluminium 7068 alloy, Silicon carbide reinforced Zirconium diboride & Carbon fiber composite), Carbon reinforced carbon gives the result as well. The stress developed in the carbon fiber exhaust valve is least when compared with 21-4N exhaust valve material. The overall reduction in stress is 56.328 % for Carbon-Carbon fiber. Hereby we conclude that Carbon fiber composite will be the best alternative for exhaust valve of an internal combustion engine.

## XI. FUTURE SCOPE

- A. Valve shape optimization with new shapes of valve than existing can be studied.
- B. To increase the work life of the exhaust valve further modification can be done.
- C. Performing tensile test on Universal Testing Machine and results interpreting can be done.
- D. Instead of dynamic analysis can be done.
- E. Modal analysis can be added to study natural frequencies and their behavior of various frequencies.
- F. Performance test of the optimized valves and composite material valve can be done.
- G. Research on composite materials to enhance their mechanical, chemical and thermal properties.

## XI. ACKNOWLEDGEMENTS

The authors are grateful to the Nandha Engineering College for providing necessary facilities to develop this 3 - Dimensional Model. The authors are also thankful to the department lab for modeling our design.

### A. Conflict of Interest

There is no conflict of interest to be described.

## REFERENCES

- [1] Amitkumar B. Solanki Kishan, C. Gohil Paras, G. Parmar Dhaval, S. Chauhan (2017) "Design, Modeling and Strength Analysis of Exhaust Valve for 4 Stroke Single Cylinder 10 Hp (7.35 Kw) Diesel Engine". International Journal of Advanced Technology in Engineering and Science, Volume 5, Issue 2.
- [2] Dinesh Kumar. V, Dinesh. T (2018) "Experimental Analysis of Exhaust Valve by using Composite Materials". International Journal for Scientific Research & Development| Volume 6, Issue 01.
- [3] Fred Starr (2014) "Design and Development of Exhaust Valves for Internal Combustion Engines from the Perspective of Modern Thinking". The Newcomen Society for the Study of the History of Engineering & Technology, Volume 84, Issue 1.
- [4] Fuqiang Lai, Shengguan Qu, Yong Duan, Roger Lewis, Tom Slatter, Lianmin Yin, Xiaoqiang Li, Huahuan Luo, Ge Sun (2018) "The Wear and fatigue behavior of hollow head and sodium filled engine valve". Tribology International.
- [5] Fuqiang Lai, Shengguan Qu, Lianmin Yin, Guanghong Wang, Zhangxuan Yang and Xiaoqiang Li (2017) "Design and Operation of a New Multifunctional Wear Apparatus for Engine Valve Train Components". Journal of Engineering Tribology (ELSEVIER).
- [6] Kakrapalli.Divya Teja (2015) "Composite Poppet Valves Design and Testing". International Journal & Magazine of Engineering, Technology, Management and Research. Volume 2, Issue 12.
- [7] Karan Soni, S. M. Bhatt, Ravi Dayatar, Kashyap Vyas (2015) "Optimizing IC Engine Exhaust Valve Design Using Finite Element Analysis". International Journal of Modern Engineering Research, Volume 5, Issue 5.
- [8] Kul deep Shakya, P.S. Dhakar (2018) "Steady State Thermal Analysis of I.C. Engine Poppet Valve Using ANSYS". International Journal of Technical Innovation in Modern Engineering & Science, Volume 4, Issue 6.
- [9] LucjanWitek (2016) "Failure and thermo-mechanical stress analysis of the exhaust valve of diesel engine". Engineering Failure Analysis Volume 66.
- [10] Mahfoudh ceredoun, Carlo caracsci Adel ghenaiet (2016) "An approach for thermal analysis of internal combustion Engine Exhaust Valve". Tribology International.
- [11] Mamta .R. Zade (2016) "Optimization of Inlet Valve of IC Engine Using FEA. International Research Journal of Engineering and Technology. Volume 03, Issue 10.
- [12] Mani Kumar. Ch, P. Rajendra Babu (2017) "Design & Thermal Analysis of I.C. Engine Poppet Valves using Solid works and FEA". International Research Journal of Engineering and Technology, Volume 04, Issue 03.
- [13] Mark. P Gorton (1994) "Carbon-Carbon Piston Development". NASA Contract Report, Year: 1994.
- [14] Muhammad Imran Khana, Muhammad Arsalan Khanb, Abdul Shakoorb (2018) "A Failure Analysis of the Exhaust Valve from a Heavy-Duty Natural Gas Engine". Engineering Failure Analysis, Volume 85.
- [15] Potru Girish, Dr.M. Janardhan, Mr.G. Rameshbabu (2016) "The Exhaust Valve Engine Transient Thermal Analysis". International Journal of Innovative Technology and Research, Volume 4, Issue 5.





- [16] Rajkumar. N (2016) "Modelling and Analysis of Exhaust Valves for Effective Material Selection in Diesel Engine using Ansys". International Journal of Advanced Science and Engineering Research, Volume 1, Issue 1.
- [17] Seshagiri Rao. B and Gopi Chandu. D (2014) "Petrol Engine Exhaust Valve Design, Analysis and Manufacturing Processes". International Journal of Mechanical Engineering and Robotics Research, Volume 3, Issue 4.
- [18] Shojaefard. M. H, A. R. Noorpoor, D. A. Bozchaloe & M. Ghaffarpour (2007) "Transient Thermal Analysis of Engine Exhaust Valve". An International Journal of Computation and Methodology.
- [19] Snehal S. Gawale, Dr.S.N. Shelke (2016) "Diesel Engine Exhaust Valve Design and Optimization". Journal of Mechanical and Civil Engineering Volume 13, Issue 4.
- [20] Snehal S. Gawale, Dr.S.N. Shelke, Prof.M.A. Ahire (2016) "Design of Stationary IC Engine's Exhaust Valve and Optimization Based on Finite Element Analysis". International Journal of Modern Trends in Engineering, Volume 3, Issue 4.
- [21] Sowjanya. G, P. Venu Babu (2017) "Design and Transient Thermal Analysis of a Diesel Engine outlet Bimetal Valve for Open and Closed conditions". International Journal & Magazine of Engineering, Technology, Management and Research, Volume 4, Issue 5.
- [22] Tangram Laxman, B. Balaji (2017) "The analysis of thermal loads on the exhaust valve during combustion with various blended fuels". International Journal of current research in advance materials, heat and energy engineering, Volume 1, Issue 1.
- [23] Uma Rani. R, Bommareddi Venkateswara Reddi, Kadali Vamshi Krishna, Challa Chandra Shekhar Sharma (2018) "Design and Structural Analysis of Exhaust Engine Valve with High Entropy Alloys". International Research Journal of Engineering and Technology, Volume 05, Issue 11.
- [24] Yu. Z. W, X.L. Xu (2004) "Failure analysis and metallurgical investigation of diesel engine exhaust valves". Engineering Failure Analysis, Volume 13 (ELSEVIER).
- [25] Yuane Wu, Gong Chen, Maosheng Zhan, Jiping Yang (2019) "High heat resistant carbon fiber/polyimide composites with neutron shielding performance". Progress in Organic Coatings, Volume 132.



10.22214/IJRASET



45.98



IMPACT FACTOR:  
7.129



IMPACT FACTOR:  
7.429



# INTERNATIONAL JOURNAL FOR RESEARCH

IN APPLIED SCIENCE & ENGINEERING TECHNOLOGY

Call : 08813907089  (24\*7 Support on Whatsapp)