



# **iJRASET**

International Journal For Research in  
Applied Science and Engineering Technology



---

# **INTERNATIONAL JOURNAL FOR RESEARCH**

IN APPLIED SCIENCE & ENGINEERING TECHNOLOGY

---

**Volume: 3**

**Issue: XI**

**Month of publication: November 2015**

**DOI:**

**[www.ijraset.com](http://www.ijraset.com)**

**Call: ☎ 08813907089**

**E-mail ID: [ijraset@gmail.com](mailto:ijraset@gmail.com)**

# **Control of Single Phase Micro-sources in a Utility Connected Grid by using FUZZY LOGIC**

Gouse Basha Shaik<sup>1</sup>, Shaik Hameed<sup>2</sup> M.Tech

*QUBA College of Engineering & Technology, Electrical & Electronics Engineering,  
Venkatachalam, Nellore-524320*

**Abstract:** *Today everyone is aiming at a reduction in greenhouse gas emissions, the requirements for adding new generation capacity can no longer be met by traditional power generation methods of burning the primary fossil fuels such as coal, oil, natural gas, etc. This is why distributed generators (DG) have significant opportunity in the evolving power system network. This paper concentrates on power quality improvement in the utility grid connected system using Fuzzy Logic controller, the unbalance in the system is compensated using compensating device such as D-statcom, The problem in the single phase system cause due to Non-Linear loads and unbalanced loads and due to source like PV (Photo voltaic cells) and FC (Fuel Cells). In this the D-statcom only supplies reactive power and no real power. In the another Scheme a large 3phase converter controlled DG is placed that only supplies reactive power, and fuzzy logic controller is used for controlling of dc Voltage The effectiveness of controllers has be tested using Matlab/Simulink software.*

**Key words:** *Micro Grid, Fuzzy, D-statcom, Power quality, Harmonics.*

## **I. INTRODUCTION**

Nowadays, the utilization of renewable energy sources (RES) for matching the increasing electric energy demand is determined by environmental concerns, economic and social. Nowadays the RES can efficiently improve the micro potential utilization whereas in the past decades the hydroelectric power plants larger than 10 MW were of interest. Their development will lead to an increase in the green energy percentage and to control pollution. Meanwhile, the actual structure of the energy distribution networks begins to suffer modifications related to the interconnection of distributed generation units (DG) based on RES [1]. System stability decline in its terminal zones, the wearing out of the actual control and measurement equipments, the predominant unidirectional energy flow are the drawbacks of the classical energy production and distribution systems. Thus, the DG unit's development dictates the need for modernizing of the distribution networks. On the other hand, the integration of those units within the existing networks must be accomplished by ensuring the power quality of the energy which is produced, the capacity of fast response to the demands and a minimum perturbing influence on the utility grid. For doing this, the DG units must contain modern measurement, communication and control equipments, protection, making the transition towards Smart Grids [2]. Another possible operating situation in islanded mode is the one in which the micro-grid contains only induction generator [5,8]. A voltage regulator is necessary besides, the frequency regulator in this case and also a reactive power source that must provide the excitation needs, possible control solutions being detailed in [6,8].

This paper presents the fuzzy logic based control of single phase micro sources (DG) in a utility connected grid. while the DGs, supply their maximum generated power, rest of the power demand of each phase is supplied by utility and three DG connected at the PCC, if any. To overcome this problem, we have proposed two different schemes. In the first scheme, a distribution static compensator (DSTATCOM) is connected at the point of common coupling (PCC) to compensate current harmonics and reactive power. In the PCC, in place of the DSTATCOM to share both real and reactive power with the utility. The DG also compensates the system and makes the PCC voltage balanced.

## **II. SYSTEM STRUCTURE**

Fig.1 shows the structure of the system studied in this paper.  $R_s$  and  $L_s$  represent the source impedance. The three single phase DGs and a three phase compensator is connected to the source side. The three phases DG or DSTATCOM is also connected through secondary feeders to the PCC. Here power quality can be improved with both of the compensators. It is assumed that all the DG are inertia less and VSC-interfaced.  $L_{d1}$  to  $L_{d6}$  indicated the loads. The secondary feeder impedances are denoted by  $Z$ . The DG

## International Journal for Research in Applied Science & Engineering Technology (IJRASET)

output voltages are denoted by  $E_i$   $E_i$   $i, i=1 \dots 3$ . Each single phase DG is connected to the grid through external inductors as shown in fig. 1. In order to see the power quality an Induction motor

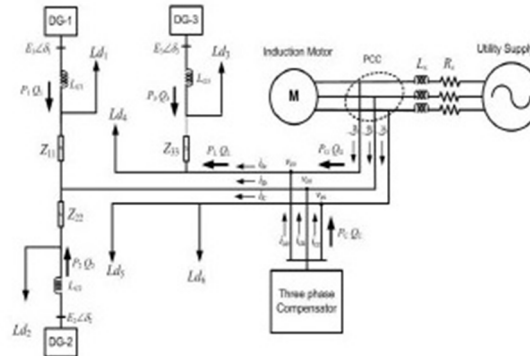


Fig.1 Structure of the grid system under consideration.

TABLE-1: Grid System Parameters

System Quantities	Values
Systems frequency	50 Hz
Feeder impedance	$Z_{12} = Z_{23} = Z_{34} = Z_{45} = Z_{56} = Z_{67} = Z_{78} = Z_{89}$
Load ratings	$L_{d1}$ 4.2 kW and 3.2 kVAr $L_{d2}$ 4.2 kW and 3.2 kVAr $L_{d3}$ 8.4 kW and 6.4 kVAr $L_{d4}$ 4.2 kW and 3.2 kVAr $L_{d5}$ 8.4 kW and 6.4 kVAr $L_{d6}$ 8.4 kW and 6.4 kVAr $L_{d7}$ 4.2 kW and 3.2 kVAr
DG ratings (nominal)	DG-1 5.2 kW DG-2 7.5 kW DG-3 3.0 kW
Output inductances	$L_{d1} = L_{d2} = L_{d3} = L_{d4}$ 75 mH
DGs and VSCs	
DC voltages ( $V_{d1}$ to $V_{d4}$ )	0.9 kV
Transformer rating	0.350 kV/0.350 kV, 0.25 MVA, 2.5% $L_f$
VSC losses ( $R_f$ )	1.5 $\Omega$
Filter capacitance ( $C_f$ )	50 $\mu$ F
Hysteresis constant ( $h$ )	$10^{-3}$

### III. CONVERTER STRUCTURE AND CONTROL

In fig2 indicates the single phase converter circuit.  $V_{dc}$  is the dc voltage produced by the ideal DC source to the VSC. The converter is connected the cascaded form. The cascaded output is connected the primary winding of the transformer. The resistance and capacitor filter and inductor is placed in order to eliminate the switching harmonics. The line inductance  $L_g$  is physically connected to represent the output inductance of the converter-DG source combination. For all the single phase DG sources the same converter structure is used. The three phase compensator contains three such H- bridges. However, it is connected to the PCC without any output inductance. The schematic diagram is shown in fig. 3. It is to be noted that for a DSTATCOM, the dc bus contains a dc capacitor, whereas for a DG-compensator, the dc bus is supplied by an deal voltage source.

## International Journal for Research in Applied Science & Engineering Technology (IJRASET)

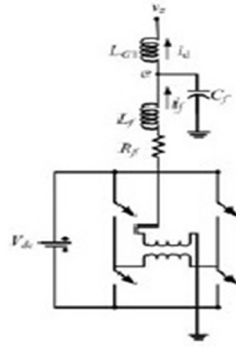


Fig.2 Single phase converter structure.

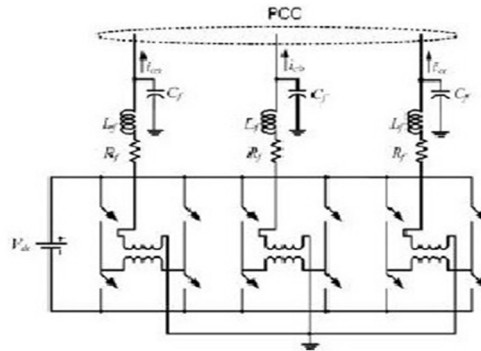


Fig.3 Three phase converter structure for the compensator.

### A. Control of Single-phase VSCs

The single –phase VSCs are controlled under closed-loop feedback. Figure 4 shows the equivalent circuit of the converter. In this,  $u$   $V_{dc}$  represents the converter output voltage, where  $u$  is the switching function that can take on values  $\pm 1$  the converter is operated in such a way the compensated voltage is developed. From the circuit of fig.4, the state space analysis is given as:

$$\dot{x} = Ax + B_1 u_c + B_2 v_{PCC} \quad 1$$

Where  $U_c$  is the continuous time control input, based on which the switching function  $u$  is determined. The discrete-time equivalent of (1) is

$$x(k+1) = Fx(k) + G_1 u_c(k) + G_2 v_{PCC}(k) \quad 2$$

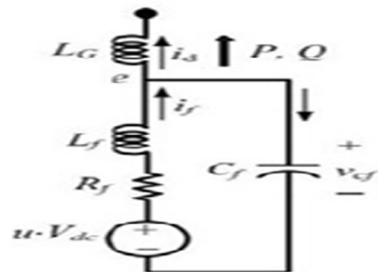


Fig.4.Equivalent circuit of the converter

## International Journal for Research in Applied Science & Engineering Technology (IJRASET)

$V_{PCC}$  represents the voltage across the PCC and is neglected or eliminated assuming it to be a disturbance input, the input – output relationship the system in (2) can be written in the following two forms

$$\frac{v_{cf}(z)}{u_c(z)} = \frac{M_1(z^{-1})}{N(z^{-1})}$$

$$\frac{i_s(z)}{u_c(z)} = \frac{M_2(z^{-1})}{N(z^{-1})} \quad 3\&4$$

The feedback control laws of the converters are generated as discussed below. The single phase DGs are controlled in a sinusoidal current limiting mode in which the output current is required to produce the maximum power. Let the reference current for maximum available power be denoted as  $i^*_1$ . This is then tracked using a four placement method to compute  $\mu_c(k)$  from (4) [5].

### B. Feedback control of the Compensator

In the three phase compensator structure shown in Fig. 3 each of the cascaded-bridges are controlled in state feedback. For this, a state vector can be defined as  $x^T = [V_{cf} \ i_{cf} \ i_1]$ . The state feedback control law is

$$u_c(k) = K[x^*(k) - x(k)] \quad 5$$

Where  $K$  indicated the feedback gain matrix and  $x^*$  is the reference state vector. In this paper, this gain matrix is obtained using LQR method.

### B. Switching Control

Once the reference signal  $\mu_c(k)$  is generated feedback loop the signal is sent in the switching circuit Hysteresis loops on 1 pulse is produced when it is off 0 pulse is produced.

$$\text{If } u_c > h \text{ then } u = +1$$

$$\text{Else if } u_c < -h \text{ then } u = -1 \quad 6$$

Where  $h$  is a small number.

## IV. REFERENCE GENERATION

In the session stated earlier we come across the modes of operation, they are Current feedback mode and state feedback mode. The reference signal generation of the two modes is discussed in this session.

### A. Current Feedback

As discussed earlier when the power output of the DG suddenly reduces or the loads demands more than the rated output power from the DG, It is switched to a sinusoidal current limiting mode. The magnitude and angle of the reference current is calculated from the voltage magnitude ( $V_z$ ) of the adjacent bus voltage as

$$I_1 = \sqrt{P_{rated}^2 + Q_{rated}^2} / V_z$$

$$\beta = \delta_z - \tan^{-1}(Q_{rated} / P_{rated}) \quad 7$$

Where  $\delta_z$  is the angle of the bus voltage ( $V_z$ ). The instantaneous quantities are then generated from these phasor quantities.

### B. Three phase DG-Compensator Reference Generation

Current harmonics and the reactive power is compensated using the Compensator using D-statcom. If proper compensation is achieved, the current  $i_g$  and  $I_2$  will be balanced and so will be the voltage  $v_p$  provided that  $V_s$  is balanced. In addition, the DG-compensator can also supply a part of the real and reactive power required, whereas the DSTATCOM only supplies reactive power. Let us assume the three phases as a, b, and c. Consider the circuit of Fig. 1. In which the current entering the distribution system from PCC is denoted by  $i_g$  and the current supplied to the distribution system is denoted by  $i_l$ . The compensator current is denoted by  $i_c$  such that the Kirchhoff's current law (KCL) at the compensator coupling point is given by

## International Journal for Research in Applied Science & Engineering Technology (IJRASET)

$$i_{ck} + i_{gk} = i_{lk}, \quad k = a, b, c \quad 8$$

Since, it is desired that the supplied currents are balanced, we have

$$i_{ga} + i_{gb} + i_{gc} = 0 \quad 9$$

Therefore combining (8) & (9) by adding the currents of the all three phases together, we get

$$i_{ca} + i_{cb} + i_{cc} = i_{la} + i_{lb} + i_{lc} \quad 10$$

since  $i_g$  is balanced due to the action of the compensator, the voltage  $v_p$  will also become balance provided that the supply voltage is balanced. Hence, the instantaneous real power  $P_G$  will be equal to its average components. Therefore it can be written as

$$v_{pa}i_{ga} + v_{pb}i_{gb} + v_{pc}i_{gc} = P_G \quad 11$$

From the KCL of (8), (11) can be written as

$$v_{pa}(i_{la} - i_{ca}) + v_{pb}(i_{lb} - i_{cb}) + v_{pc}(i_{lc} - i_{cc}) = P_G \quad 12$$

Similarly the reactive power  $Q_G$  and  $Q_c$  will be equal to their instantaneous components. Therefore we can write

$$(v_{pb} - v_{pc})i_{ga} + (v_{pc} - v_{pa})i_{gb} + (v_{pa} - v_{pb})i_{gc} = \sqrt{3} \times Q_G \quad 13$$

Using the KCL of (8), (13) can be written as

$$(v_{pb} - v_{pc})(i_{la} - i_{ca}) + (v_{pc} - v_{pa})(i_{lb} - i_{cb}) + (v_{pa} - v_{pb})(i_{lc} - i_{cc}) = \sqrt{3}Q_c$$

Equations (10), (12) and (14) form the basis of the algorithm. From these three, the following can be written

$$A \begin{bmatrix} i_{ga} \\ i_{gb} \\ i_{gc} \end{bmatrix} = A \begin{bmatrix} i_{la} \\ i_{lb} \\ i_{lc} \end{bmatrix} - \begin{bmatrix} 0 \\ -P_G \\ -\sqrt{3}Q_G \end{bmatrix}$$

Where

$$A = \begin{bmatrix} 1 & 1 & 1 \\ v_{pa} & v_{pb} & v_{pc} \\ v_{pb} - v_{pc} & v_{pc} - v_{pa} & v_{pa} - v_{pb} \end{bmatrix} \quad 15$$

The determinant of the matrix A is given by

$$|A| = v_{pa}(v_{pc} + v_{pb} - 2v_{pa}) + v_{pb}(v_{pa} + v_{pc} - 2v_{pb}) + v_{pc}(v_{pb} + v_{pa} - 2v_{pc}) \quad 16$$

If  $V_p$  is balanced then the following is true

$$v_{pa} + v_{pb} + v_{pc} = 0 \quad 17$$

## International Journal for Research in Applied Science & Engineering Technology (IJRASET)

Substituting (17) & (16), the determinant of a is given as

$$|A| = -3(v_{pa}^2 + v_{pb}^2 + v_{pc}^2) \quad 18$$

Computing the inverse of the matrix A, the solution of (15) is given as

$$\begin{bmatrix} i_{ca} \\ i_{cb} \\ i_{cc} \end{bmatrix} = \begin{bmatrix} i_{sa} \\ i_{sb} \\ i_{sc} \end{bmatrix} + \frac{1}{|A|} \begin{bmatrix} 3P_C v_{pa} + \sqrt{3}Q_C (v_{pb} - v_{pc}) \\ 3P_C v_{pb} + \sqrt{3}Q_C (v_{pc} - v_{pa}) \\ 3P_C v_{pc} + \sqrt{3}Q_C (v_{pa} - v_{pb}) \end{bmatrix} \quad 19$$

Now let us stipulate that the utility supplies  $P_G$  that times the average power  $P_{Lav}$  supplied to the distribution system and  $Q_G$  which is  $\lambda_q$  times the average reactive power  $Q_{Lav}$  supplied to the distribution system. This is given by the following two relations

$$\begin{aligned} P_G &= \lambda_p \times P_{Lav} \\ Q_G &= \lambda_q \times Q_{Lav} \end{aligned} \quad 20$$

### V. FUZZY LOGIC CONTROLLER

The Fuzzy logic controller (FLC) is used as controller in the proposed model. The Fuzzy Logic tool was introduced I 1965, also by Lotfi Zadeh, and is a mathematical tool for dealing with uncertainty. T offers to a soft computing partnership the important concept of computing with words". It provides a technique to deal with imprecision and information granularity. The fuzzy theory provides a mechanism for representing linguistic constructs such as 'many', 'low' 'medium' 'often' 'few'. In general the fuzzy logic provides as inference structure that enables appropriate human reasoning capabilities. In fuzz logic basic control is determined by a set of linguistic rules which are determined by the system. Since numerical variables are converted into linguistic variables, mathematical modeling of system is not required. The fuzzy logic control is being proposed for controlling the inverter action. FLC is a new addition to control theory and it incorporates a simple, rule based IF X AND Y THEN Z approach to a solving control problem rather than attempting to a model a system mathematically.

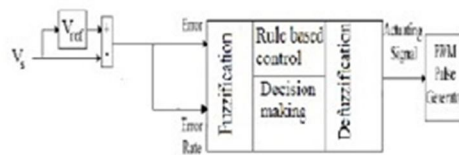


Fig.5 Block diagram of proposed control system

#### A. Error calculation

The error is calculated from the difference between supply voltage data and the reference voltage data. The error rate is the rate of change of error.

#### B. Fuzzification

Fuzzification is an important concept in the fuzzy logic theory. Fuzzification is a process where the crisp quantities are converted to fuzzy. Thus fuzzification process may involve assigning membership values for the given crisp quantities. This unit transforms the non-fuzzy(numeric) input variable measurements into the fuzzy set ( linguistic) variable that is clearly defined boundary, without a crisp (answer). In this simulation study, the error and error rate are defined by linguistic variables such as negative big (NB), negative medium (NM), negative small (NS), zero (Z), positive small (PS), positive medium (PM) and positive big (PB) characterized by membership function given in figure 7.

## International Journal for Research in Applied Science & Engineering Technology (IJRASET)

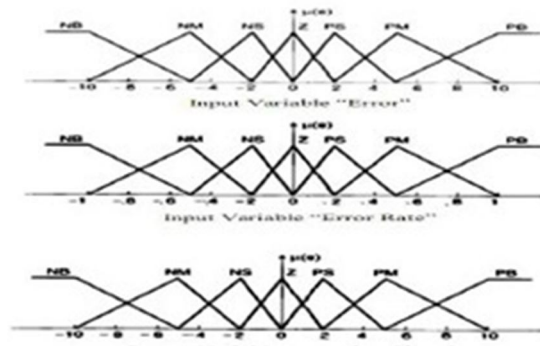


Fig 6 Membership function for inputs and outputs

### C. Decision Making

Fuzzy process is realized by mamdani method. Mamdani inference method has been used because it can easily obtain the relationship between its inputs and output [11]. The set of rules for fuzzy controller are represented in Table ii. There are 49 rules for fuzzy controller the output membership function for each rule is given by the Min (minimum) operator. The max operator is used to get the combined fuzzy output from the set of outputs of Min operator. The output is produced by the fuzzy sets and fuzzy logic operations by evaluating all the rules. A simple, if – then rule is defined as follows: if error is Z and error rate is J then output is Z

Table-II

Ce\e	NB	NM	NS	Z	PS	PM	PB
NB	NB	NB	NB	NM	NM	NS	Z
NM	NB	NB	NM	NM	NS	Z	PS
NS	NB	NM	NM	NS	Z	PS	PM
Z	NM	NM	NS	Z	PS	PM	PM
PS	NM	NS	Z	PS	PM	PM	PB
PM	NS	Z	PS	PM	PM	PB	PB
PB	Z	PS	PM	PM	PB	PB	PB

### D. Defuzzification

It is the process of converting the controller outputs in linguistic labels represented by fuzzy set to real control (analog) signals. Defuzzification means fuzzy to crisp conversion. The fuzzy results generated cannot be used as such to the applications, hence it is necessary to convert the fuzzy quantities into crisp quantities for further processing. This can be achieved by using defuzzification process. Centroid method is used for defuzzification in the present studies.

### E. Signal Processing

The outputs of FLC process are the control signals that are used in generation of switching signals of the PWM inverter by comparing with a carrier signal.

## VI. SIMULATION STUDIES

### A. Case-1: without Compensator

Table i indicates the total load demand is more than the total maximum generation. Thus the rest of the power requirement has to be supplied from the utility. Let us assume that a system is operating in without any deviation in which DG-2 is supplying 3 KW and load Ld1 is not connected. Suddenly at 0.45 sec, the power output of DG-2 rises to 7 KW. Furthermore, at 0.77 sec the Ld1 gets connected drawing real and reactive power of 4.2 KW and 3.2 KVar respectively. It can be seen that the maximum power supply by DG-2 increase, while the load change has not impact on the maximum power supplied by any f the DGs. The oscillations in the power level is due to the unbalance in the three phases. At 0.45 sec the utility power decreases as the power generation in DG-2 is increased while at 0.77 sec the utility supply is increased to load change in phase b. figure 7 represents the active and reactive power ad figure 8 represents the utility power. Figure 9 and figure represents the utility power and currents and induction motor torque.

# International Journal for Research in Applied Science & Engineering Technology (IJRASET)

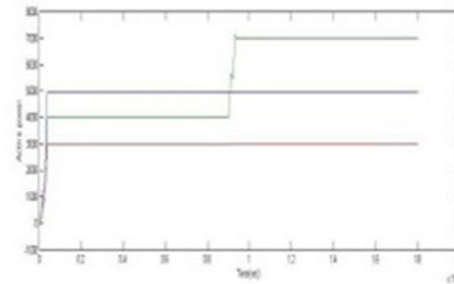


Fig 7 Active and Reactive power

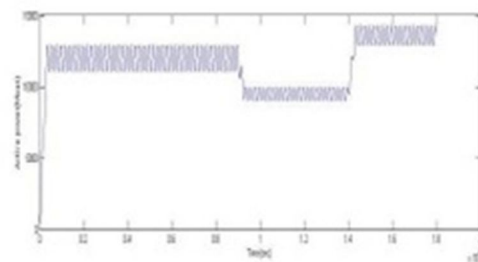


Fig 8 Utility Power

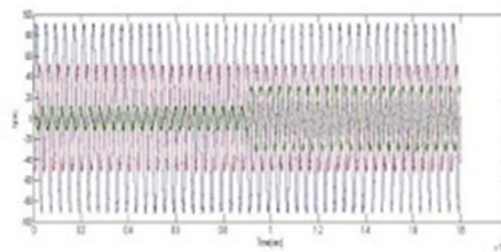


Fig 9 Unbalance Utility Power and Currents

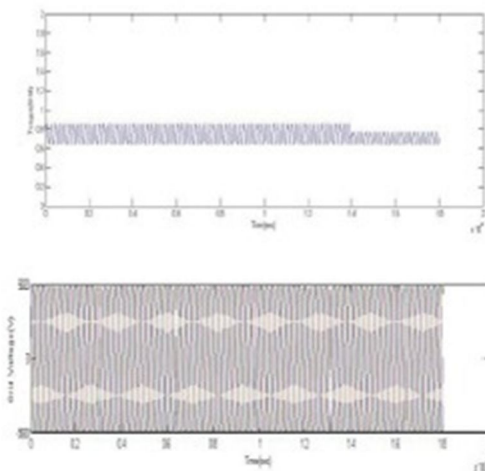


Fig 10 Induction motor torque and voltage at PCC

## International Journal for Research in Applied Science & Engineering Technology (IJRASET)

### B. Case-2: DSTATCOM Connected to PCC

In order to compensate the unbalance in the system DSTATCOM is connected as a three phase compensator. DSTATCOM can share the reactive power requirement with utility in a pre-specified ratio. The DSTATCOM is connected to the system at 0.2s and it is desired that DSTATCOM supply is 70% of reactive power while balancing the utility currents. It can be seen that utility currents gets balanced after the DSTATCOM connection. However the DSTATCOM supplies unbalanced currents to compensate for the downstream unbalance. Figure 11a represents the PCC currents and voltages and we can observe that 0.2s DSTATCOM is connected and the PCC is compensated and the DSTATCOM currents can be seen in the figure 11 (c,d) indicates the reactive power of utility and the induction motor torque which is used as load.

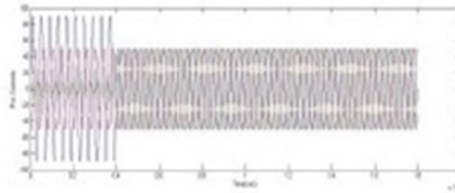


Fig 11a PCC Currents

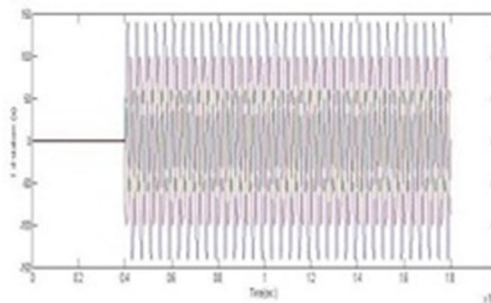


Fig 11b Compensator current

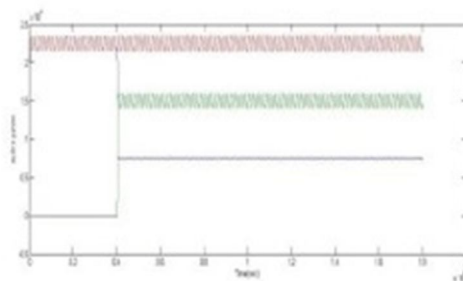


Fig 11c Active power from utility grid

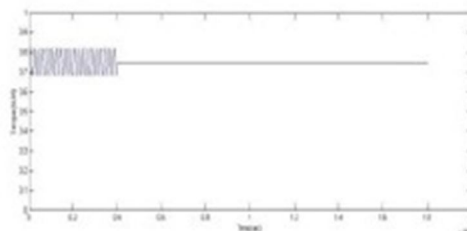


Fig 11d Induction motor torque

### C. Case3

DG-Compensator connected at PCC while the DSTATCOM can only provide the required reactive power, a compensator connected with DG can also share the real power burden of the utility. Let us assume that the DG-compensator supplies 30% of the real and reactive power demand (PL, QL), when it gets connected to the system at 0.45s. the system responses are shown in figure 12. Figure

## International Journal for Research in Applied Science & Engineering Technology (IJRASET)

12a, 12b shows the three phases current from utility and DG-compensator. The real and reactive power sharing are shown in figure 12c, 12d. while utility provides balanced real and reactive power, the DG supplies the oscillating component alone in the desired ratio. The induction motor torque shown in figure 12d.

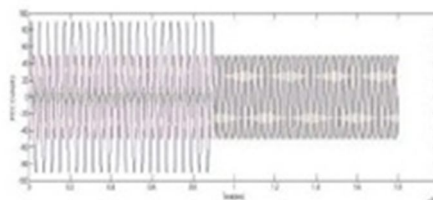


Fig 12a PCC Current

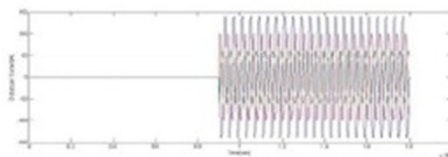


Fig 12b compensator current

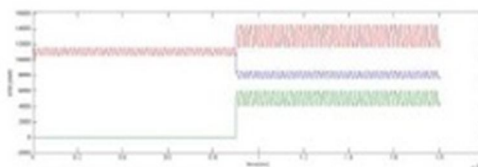


Fig 12c Active power from Grid

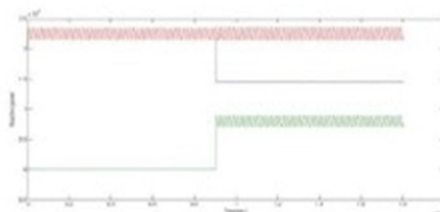


Fig 12d Reactive power from Grid

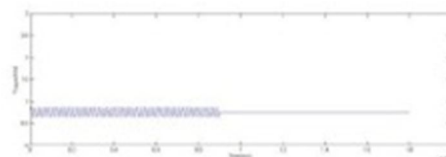


Fig 12d Torque

### D. Case-4: Non Linear Loads

In order to know whether DG is efficiently or not further a non linear loads are added to the linear loads Ld1, Ld4 and Ld5. It is assumed that the power consumed by these non linear loads is 20% of their linear counter parts. The results are shown in figure 13. Where DG-compensator is connected at 0.45s. it can be seen from figure 13a that the utility currents get balanced as soon as the DG-compensator is connected. The induction motor torque pulsation also eases due to the DG-compensator connection as seen from figure 13b. the total harmonic distortion (THD) has been computed for this case. The THD of the grid voltage is about 10% and the negative and zero sequence components are around 5% of the positive sequence component before DG-compensation connection

## International Journal for Research in Applied Science & Engineering Technology (IJRASET)

this are then reduced such that the THD becomes less than 0.5%, whereas, negative and zero sequence components of the voltages remain below 0.02% once the DG-compensator is connected.

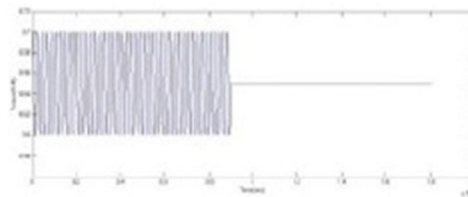


Fig 13a torque

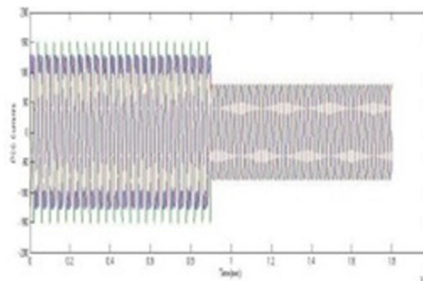


Fig 13b PCC voltage

### VII. CONCLUSIONS

In this paper ,Fuzzy logic based control of single phase DG sources are considered in a three phase utility connected grid. The single phase sources are operated to deliver available maximum power generated while the rest of the power demands in each of the phases are supplied by utility (and if available, three phase DG sources). The imbalance in three phase power is compensated two ways either through a DSTATCOM or through a DG-Compensator. A DSTATCOM can compensate for unbalances and non linearities, while providing reactive power support. The size of the DG capacitor determines how much reactive power support the DSTATCOM can provide without any drop in voltage. The choice of this capacitor is thus a trade-off between the reactive support and system response[6]. Alternatively a three phase DG-Compensator can be connected at the PCC to share the real and reactive power with utility and to compensate for the unbalance and non linearities in the system. The efficiency of compensation is validated through extensive simulations with fuzzy logic controller it is possible to operate single phase DG sources in a utility connected grid and this might become a useful tool as their penetration in distribution system increases.

### REFERENCES

- [1] B.K. Bose, "Energy, environment and advances in power electronics" IEEE Trans. On power electronics, Vol. 15, pp.688-701, July 2000.
- [2] X. Yoasuo, C.Liuchen, B.K. Soren, B.Josep and S.Toshihisa, "Topologies of single-phase inverters for small distributed power generators: an overview", IEEE Trans. On power Electronics, vol. 19, pp.1305-1314, Sep 2004
- [3] T.E.McDermott, R.C. Dugan, "Distributed generation impact on reliability and power quality indices" Rural Electric Power conference, 2002, pp D3-D3\_7
- [4] Y.W. Li, D.M. Vilathgamuwa and P.C. Loh "A grid-interfacing power quality compensator for three-phase three-wire micro grid applications," IEEE Trans on Power Electronics, vol. 21, Issue 4, pp.1021-1031, July 2006
- [5] A.Ghosh, A.K. Jindal and A.Joshi, "Inverter control using output feedback for power compensating devices," proc. IEEE Asia-Pacific Region-10 Conference TENCON, Bangalore, p. 49-52, October 2003.
- [6] A.Ghosh and G.Ledwich, "Load compensating DSTATCOM in weak ac systems." IEEE Trans, Power Delivery, Vol. 18, No.4, pp. 1302-1309, 2003.
- [7] W.Freitas, A.Morelato, X.Wilsun and F.Sato, "Impacts of ac generators and DSTATCOM devices o the dynamic performance of distribution systems," IEEE Trans, On Power Delivery, vol. 20, No.2, pp. 1493-1501, 2005.

# International Journal for Research in Applied Science & Engineering Technology (IJRASET)

## AUTHORS

SK. HAMEED, Professor & HOD EEE Department, QUBA College of Engineering & Technology, Nellore.

SK.HAMEED did his M. Tech in Electrical & Electronics Engineering. He had Seven years of teaching experience in Electrical & Electronics Engineering department. His research interests are in the GRID.

GOUSE BASHA SHAIK did his B. Tech in Electrical & Electronics Engineering in GOKULAKRISHNA Engineering College, Sullurpet, India at 2008 and M. Tech in Power Systems from QUBA College of Institute of Engineering and technology, Nellore, JNTU Anantapur University, India in 2015.



10.22214/IJRASET



45.98



IMPACT FACTOR:  
7.129



IMPACT FACTOR:  
7.429



# INTERNATIONAL JOURNAL FOR RESEARCH

IN APPLIED SCIENCE & ENGINEERING TECHNOLOGY

Call : 08813907089  (24\*7 Support on Whatsapp)