



# **iJRASET**

International Journal For Research in  
Applied Science and Engineering Technology



---

# **INTERNATIONAL JOURNAL FOR RESEARCH**

IN APPLIED SCIENCE & ENGINEERING TECHNOLOGY

---

**Volume: 9      Issue: VI      Month of publication: June 2021**

**DOI: <https://doi.org/10.22214/ijraset.2021.35941>**

**[www.ijraset.com](http://www.ijraset.com)**

**Call:  08813907089**

**E-mail ID: [ijraset@gmail.com](mailto:ijraset@gmail.com)**

# Chest Diseases Detection based on Deep Learning

Puneet Gupta<sup>1</sup>, Omkar Singh Rajpurohit<sup>2</sup>, Hemant Mittal<sup>3</sup>

<sup>1,2</sup>B-Tech Scholar, <sup>3</sup>Assistant Professor, Department Of CSE/IT/Global Institute of Technology/India

**Abstract:** “The paper is on our project that is all about detecting 14 different types of chest diseases using x-ray images of chest. It also neglects the apparels and jewelry’s present on human body while performing the x-ray test thus giving us maximum accuracy of diseases detection. The key goal of project is to know the percentage of diseases detection of all the 14 different tests performed on human chest with maximum accuracy. Chest x-ray imaging is a vital screening and medicine tool for many life threatening diseases, however because of shortage of radiologists, the screening tool cannot be wont to treat all patients. Deep learning based mostly medical image classifiers are one potential answer. This project runs, uploads, method and generates reports at any given purpose of your time with accuracy.

**Keywords:** Chest diseases detection, Lung diseases detection, Deep Learning, Tenser flow, Flask, Python

## I. INTRODUCTION

The style and implementation of XPRO Chest Diseases Detection, a metric capacity unit based mostly application is that systems have received abundant attention recently for his or her ability to realize expert-level performance on clinical tasks, notably in bioscience. Chest X-ray Classification is predicated on laptop vision algorithms.it will observe fourteen diseases. Diseases that it will predict area unit puffiness, Hernia, Mass, Pneumonia, Infiltration, Fibrosis, and lots of a lot of. Here, we tend to examine the extent to that progressive deep learning classifiers trained to yield medical specialty. Chest x-ray imaging is a crucial screening and medical specialty tool for many life threatening diseases, however because of shortage of radiologists, the screening tool can't be accustomed treat all patients. Deep learning based mostly medical image classifiers area unit one potential resolution. All knowledge is totally reviewed and valid on the server before any quite actual record alteration happens. All knowledge is hold on on servers managed by the administrator that's victimization the applying and ensures highest potential level of security. It options an internet page wherever user uploads associate degree x-ray image more testing is performed and relevant results area unit provided. This method provides a straightforward and straightforward wanting interface for simple access and quality. Labels from X-ray pictures area unit biased with relevance protected attributes. we tend to train convolution neural networks to predict fourteen diagnostic labels with the assistance of NIH's clinical center. A complete of approx. 2200 pictures of x-ray pictures as knowledge sets area unit taken from completely different reliable data sources to perform testing. Conjointly victimization these software package humans will self-analyze the info on their own.

We will be using chestX-ray8 dataset which contains 108,948 frontal-view x-ray images of 32,717 unique patients.

- Every image in the data-set contains multiple text-mined labels, identifying 14 different pathological conditions.
- This can be used by physicians to diagnose 8 different types of diseases.
- We will use this data to develop a single model that will provide binary classification predictions for each of the 14 different labelled pathologies.
- In other words it will predict 'positive' or 'negative' for each of the pathologies.

But we use sample of this dataset. The dataset includes a CSV file that provides the labels for each X-ray.

## II. METHODOLOGY

This project works on Deep Learning. It Performs, Analyse and runs Tests on Chest pictures to produce Results on totally different illness detection supported chest x-ray. The project is name as “XPRO”. Chest X-ray Classification is predicated on PC vision algorithms. It analyses the x-rays uploaded by the user and classifies them into acceptable illness. Diseases that it will predict are Dropsy, Hernia, Mass, Pneumonia, Infiltration, pathology and plenty of additional.

### A. Approaches in chest X-Ray Analysis

- 1) Data preparation
  - a) Visualizing data
  - b) Preventing data leakage

## 2) Model Development

- a) Addressing class Imbalance
- b) Leveraging pre-trained models using transfer learning

## 3) Evaluation

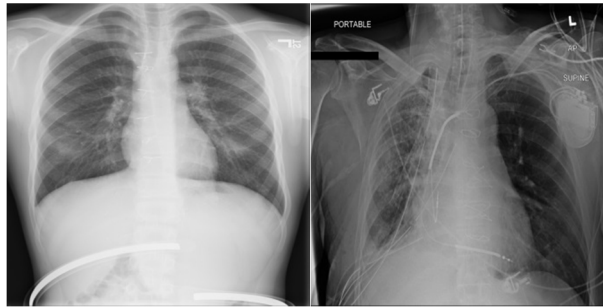
- a) AUC and ROC curves

## 4) Deployment by Flask

## 1) Data Preparation:

- We will be using the ChestX-ray8[16] dataset which contains 108,948 frontal-view X-ray images of 32,717 unique patients.
- Each image in the data set contains multiple text-mined labels identifying 14 different pathological conditions.
- These in turn can be used by physicians to diagnose 8 different diseases.
- We will use this data to develop a single model that will provide binary classification predictions for each of the 14 labelled pathologies.
- In other words it will predict 'positive' or 'negative' for each of the pathologies.
- But for this particular project we used a sample dataset from Chest X-ray8.

## a) Visualizing Data:



- b) *Preventing Data Leakage:* It is price noting that our dataset contains multiple pictures for every patient. This might be the case, for instance, once a patient has taken multiple X-ray pictures at completely different times throughout their hospital visits. In our knowledge ripping, we've ensured that the split is finished on the patient level so there's no knowledge "leakage" between the train, validation, and check datasets.

## 2) Model Development:

- a) *Addressing Class Imbalance:* One of the challenges while working on the project we saw the large class imbalance present in such datasets. Let's plot the frequency of each of the labels in our datasets:

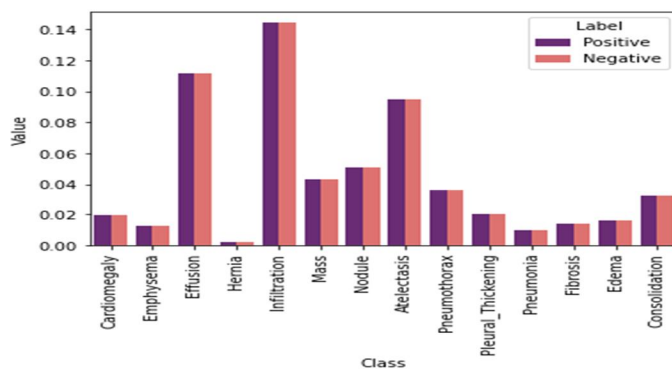


Fig 1

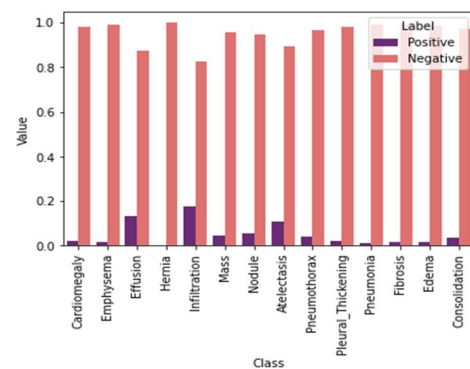


Fig 2



As we see in the above plot, the contributions of positive cases are significantly lower than that of the negative ones. However, we want the contributions to be equal. One way of doing this is by multiplying each example from each class by a class-specific weight factor,  $w_{pos}$  and  $w_{neg}$ , so that the overall contribution of each class is the same.

*b) Leveraging Pre-Trained Model using Transfer Learning:* We will use a pre-trained DenseNet121 model which we can load directly from Tensor-flow. Adding two layers on top of it:

- A global average pooling 2D layer to get the average of the last convolution layers from DenseNet121.
- A dense layer with sigmoid activation to get the prediction logits for each of our classes.

Accuracy and loss after 100 epochs is **loss: 0.0210, binary accuracy: 0.9932**.

3) *Evaluation:* Now that we have a model, let's evaluate it using our test set and plot ROC and AUC curve.

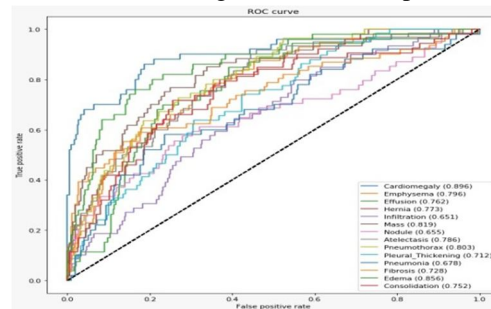
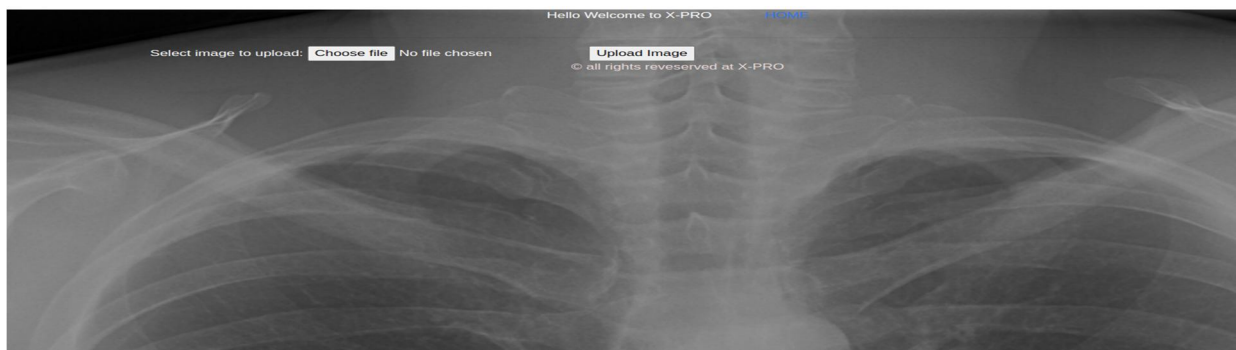


Fig 3 : AUC ROC curve

*a) Deployment by Flask :*

Here we create an application based on *web development* which is a framework of *flask* where user upload's a Chest x-ray Image and results appeared are diagnosis of different diseases based on various tests performed.



### III. EXPERIMENTATION AND RESULTS

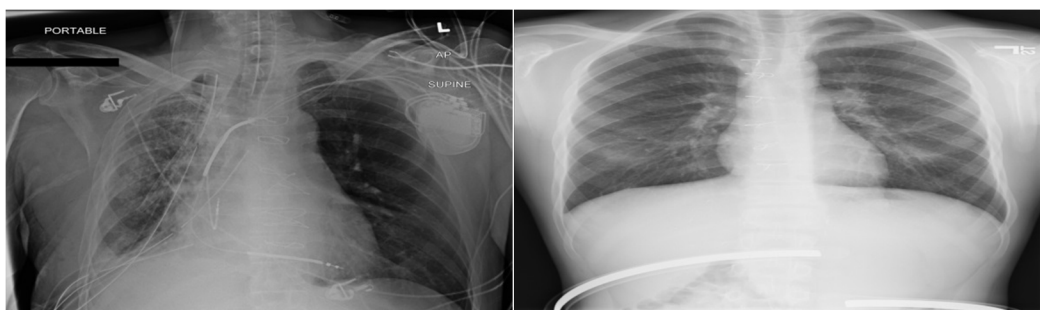


Fig.1: Infected lungs type – 1

Fig.3: Infected Lungs type - 2

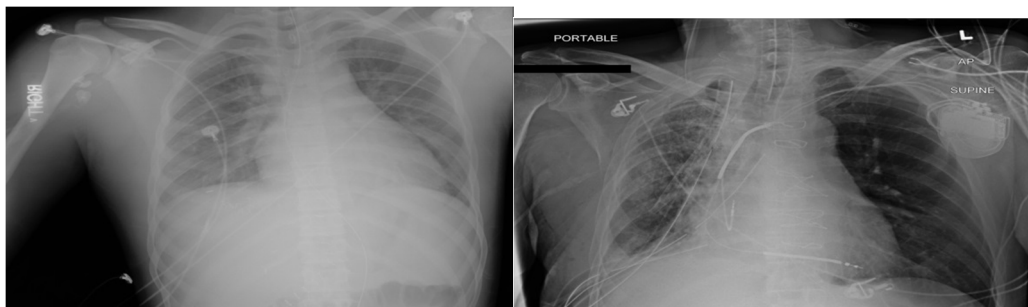


Fig.2: Infected Lungs type – 3

Fig.4: Infected Lungs type

#### IV. CONCLUSION

We created lung diseases classification based on transfer learning that was applied to large datasets of lung images. We evaluated its performance in classification of non-segmented and segmented chest X-Ray images. It is always judicious to opt for a custom student application that is designed using modern system architecture to cope up with changing requirements. The overview of application explains the ease of information delivery at the tip of your fingers with precise data and maximum accuracy of 99% according to all the tests performed.

#### ACKNOWLEDGMENT

The preferred orthography of the word “acknowledgment” in English language is while not AN “e” once the “g.” Use the singular heading even though you've got several acknowledgments. Avoid expressions like “One folks (S.B.A.) would really like to convey.” Instead, write “F. A. Author thank.” Sponsor and financial backing acknowledgments square measure placed within the incalculable footnote on the primary page.

#### REFERENCES

- [1] <https://github.com/arnoweng/CheXNet>
- [2] <https://paperswithcode.com/sota/multi-label-classification-on-chestx-ray14>
- [3] <https://www.nih.gov/news-events/news-releases/nih-clinical-center-provides-one-largest-publicly-available-chest-x-ray-datasets-scientific-community>
- [4] <https://towardsdatascience.com/towards-explainable-ai-for-healthcare-predicting-and-visualizing-age-in-chest-radiographs-2e461c31c037>
- [5] [https://en.wikipedia.org/wiki/Loss\\_functions\\_for\\_classification](https://en.wikipedia.org/wiki/Loss_functions_for_classification)
- [6] <https://www.google.com/search?q=google&oq=goog&aqs=chrome.3.69i57j69i59j35i39j0i67i131i433l7.2194j0j15&sourceid=chrome&ie=UTF-8>
- [7] <https://www.tensorflow.org/>
- [8] <https://keras.io/>
- [9] <https://opencv.org/>
- [10] <https://medium.com/@nabil.madali/deep-learning-for-automatic-pneumonia-detection-341a3891291c>
- [11] [https://openaccess.thecvf.com/content\\_cvpr\\_2017/papers/Wang\\_ChestX-ray8\\_Hospital-Scale\\_Chest\\_CVPR\\_2017\\_paper.pdf](https://openaccess.thecvf.com/content_cvpr_2017/papers/Wang_ChestX-ray8_Hospital-Scale_Chest_CVPR_2017_paper.pdf)
- [12] <https://paperswithcode.com/paper/chestx-ray8-hospital-scale-chest-x-ray>
- [13] <https://www.nature.com/articles/s41598-019-42294-8>
- [14] <https://academicorrents.com/details/557481faacd824c83fbf57dcf7b6da9383b3235a>
- [15] <https://towardsdatascience.com/creating-densenet-121-with-tensorflow-edbc08a956d8>
- [16] <https://arxiv.org/abs/1705.02315>



10.22214/IJRASET



45.98



IMPACT FACTOR:  
7.129



IMPACT FACTOR:  
7.429



# INTERNATIONAL JOURNAL FOR RESEARCH

IN APPLIED SCIENCE & ENGINEERING TECHNOLOGY

Call : 08813907089  (24\*7 Support on Whatsapp)